

5/14/19

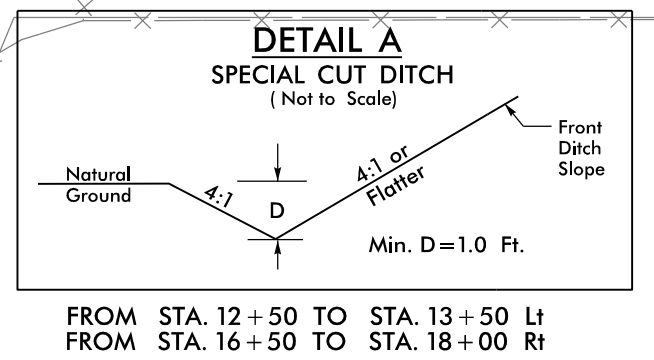
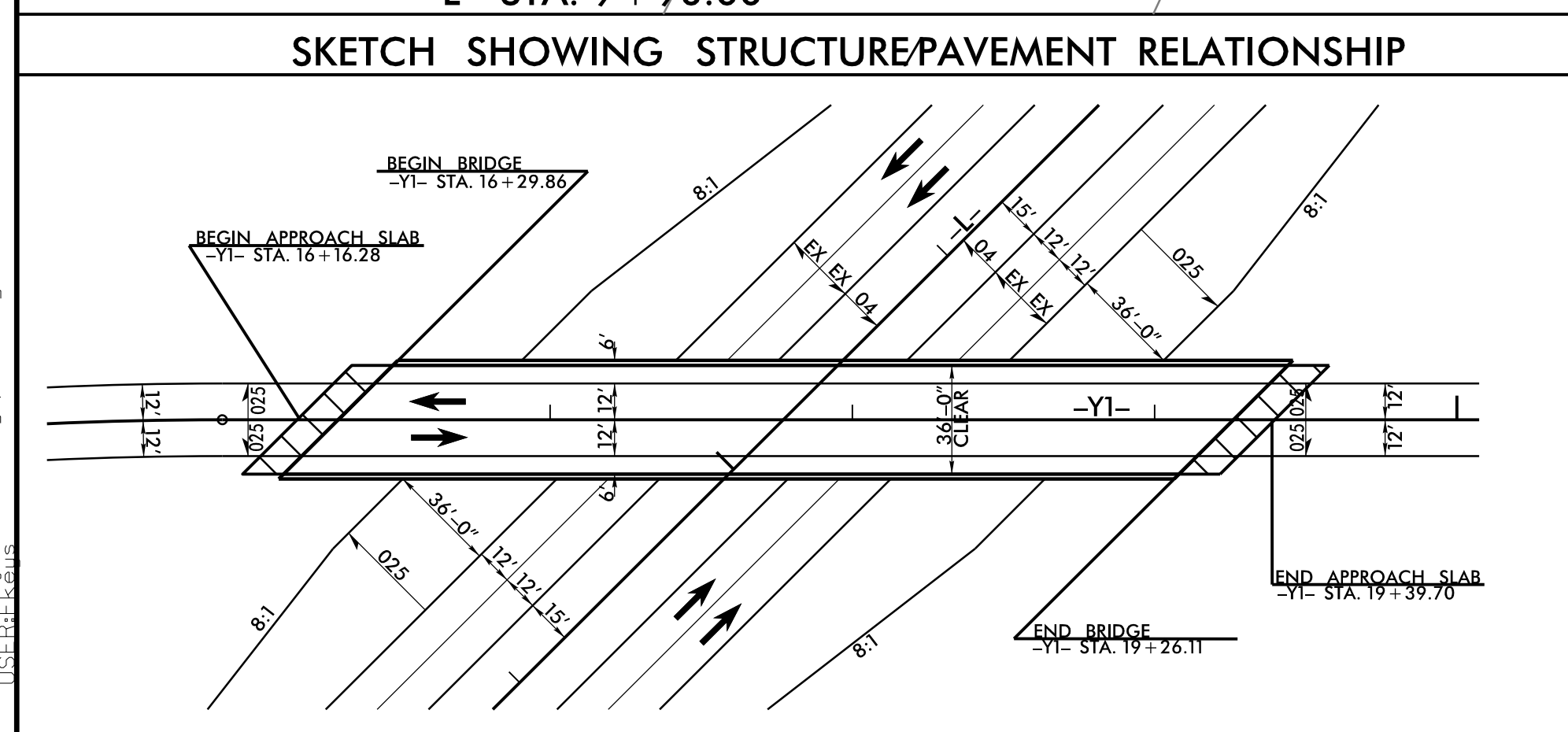
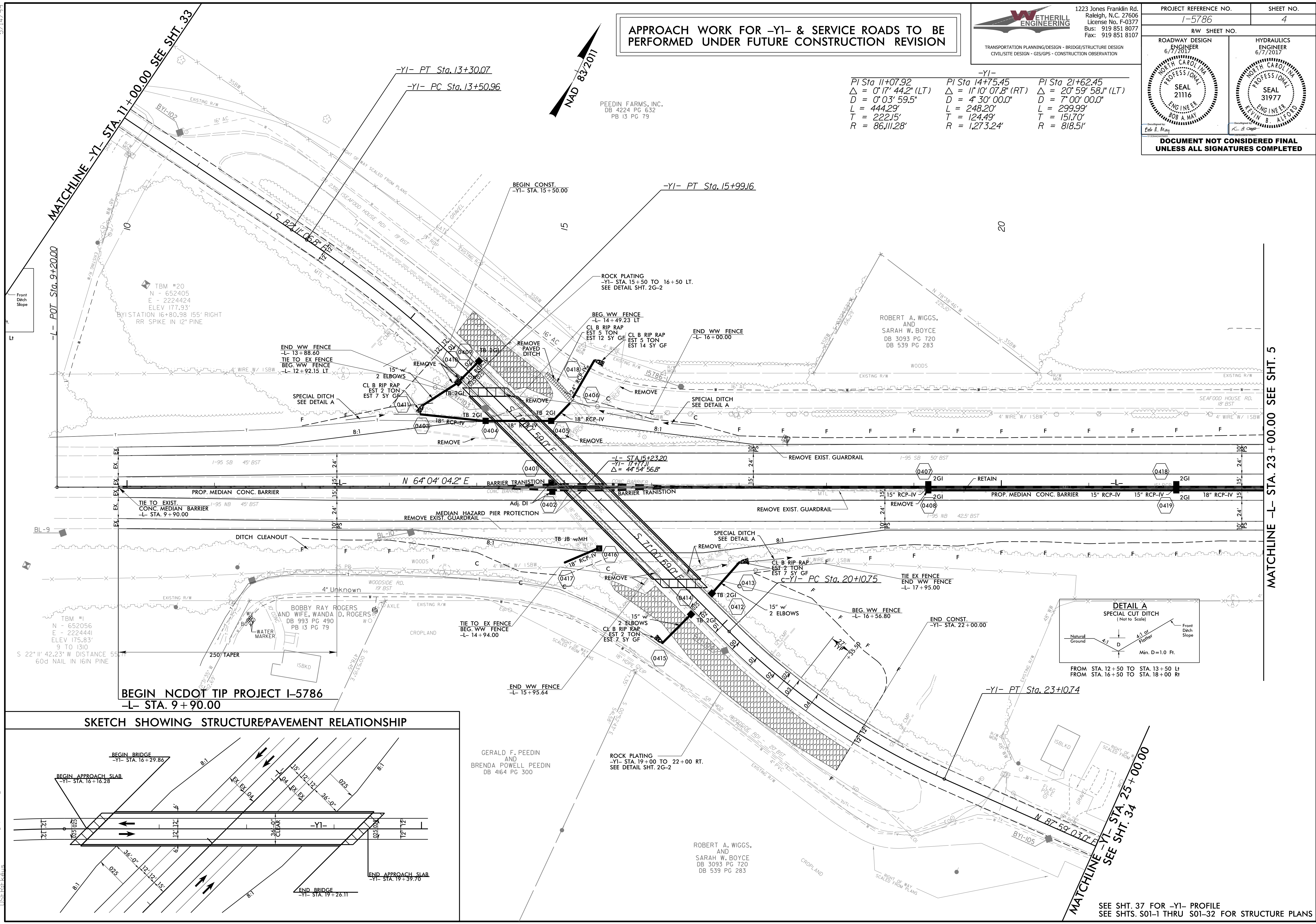
WETHERILL ENGINEERING
 1223 Jones Franklin Rd.
 Raleigh, N.C. 27606
 License No. F-0377
 Bus: 919 851 8077
 Fax: 919 851 8107

TRANSPORTATION PLANNING/DESIGN - BRIDGE/STRUCTURE DESIGN
 CIVIL/SITE DESIGN - GIS/GPS - CONSTRUCTION OBSERVATION

PROJECT REFERENCE NO. 1-5786	SHEET NO. 4
RW SHEET NO.	
ROADWAY DESIGN ENGINEER 6/7/2017 SEAL 21116 ENGINEER BOB A. MAY	HYDRAULICS ENGINEER 6/7/2017 SEAL 31977 ENGINEER KEVIN B. HAYFORD
DOCUMENT NOT CONSIDERED FINAL UNLESS ALL SIGNATURES COMPLETED	

APPROACH WORK FOR -Y1- & SERVICE ROADS TO BE PERFORMED UNDER FUTURE CONSTRUCTION REVISION

-Y1- PI Sta 11+07.92 Δ = 0° 17' 44.2" (LT) D = 0° 03' 59.5" L = 444.29' T = 222.15' R = 86,111.28'	-Y1- PI Sta 14+75.45 Δ = 11° 10' 07.8" (RT) D = 4° 30' 00.0" L = 248.20' T = 124.49' R = 1,273.24'	-Y1- PI Sta 21+62.45 Δ = 20° 59' 58.1" (LT) D = 7° 00' 00.0" L = 299.99' T = 151.70' R = 818.51'
---	---	---



6/7/2017 1-5786_Rdy_psh04.dgn

SEE SHT. 37 FOR -Y1- PROFILE
SEE SHTS. S01-1 THRU S01-32 FOR STRUCTURE PLANS