

**This electronic collection of documents is provided
for the convenience of the user
and is Not a Certified Document –**

**The documents contained herein were originally issued
and sealed by the individuals whose names and license
numbers appear on each page, on the dates appearing
with their signature on that page.**

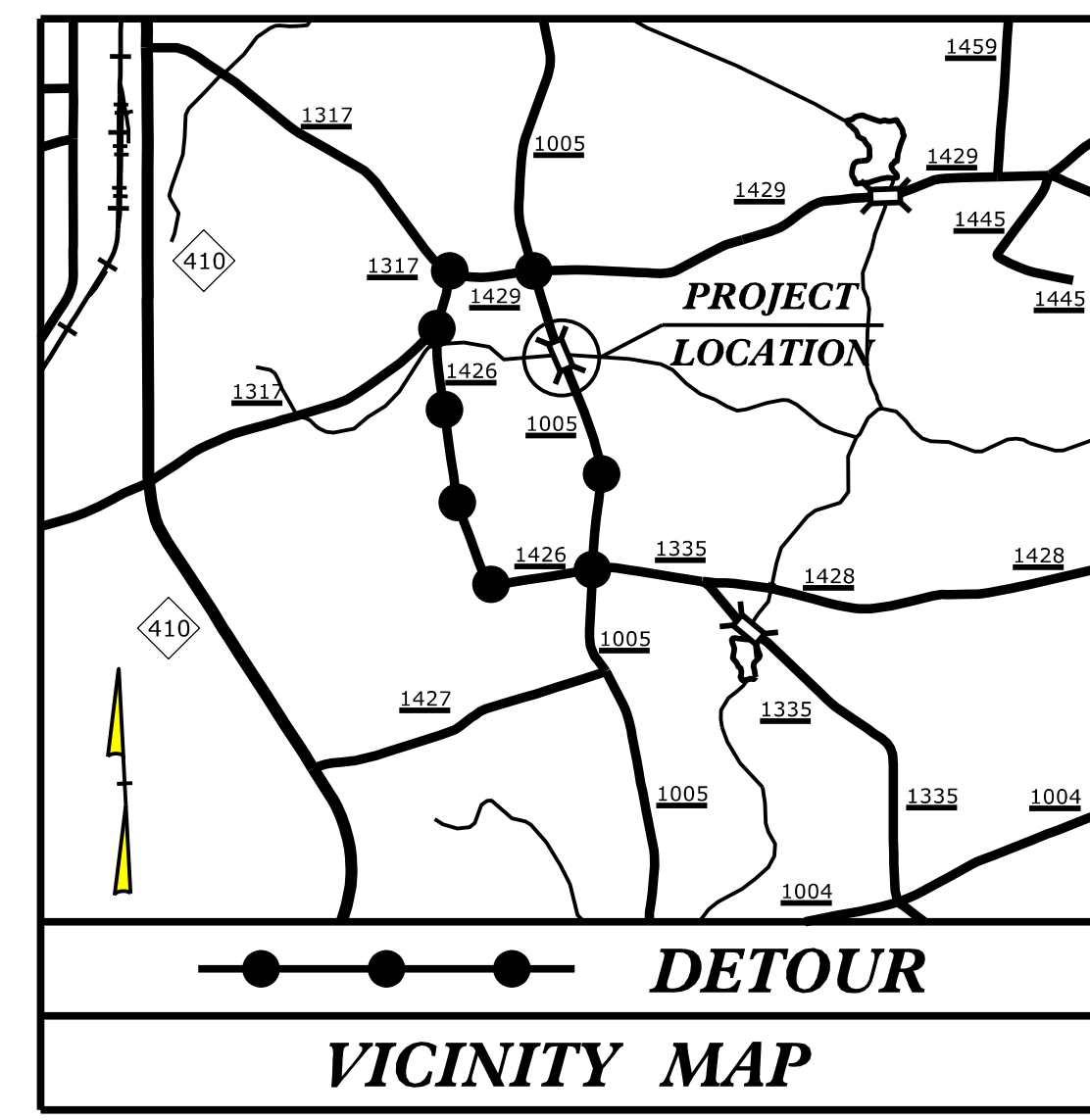
**This file or an individual page
shall not be considered a certified document.**

09.08/99

TIP PROJECT: B-5332

T.I.P. NO.	SHEET NO.
B-5332	UO-1

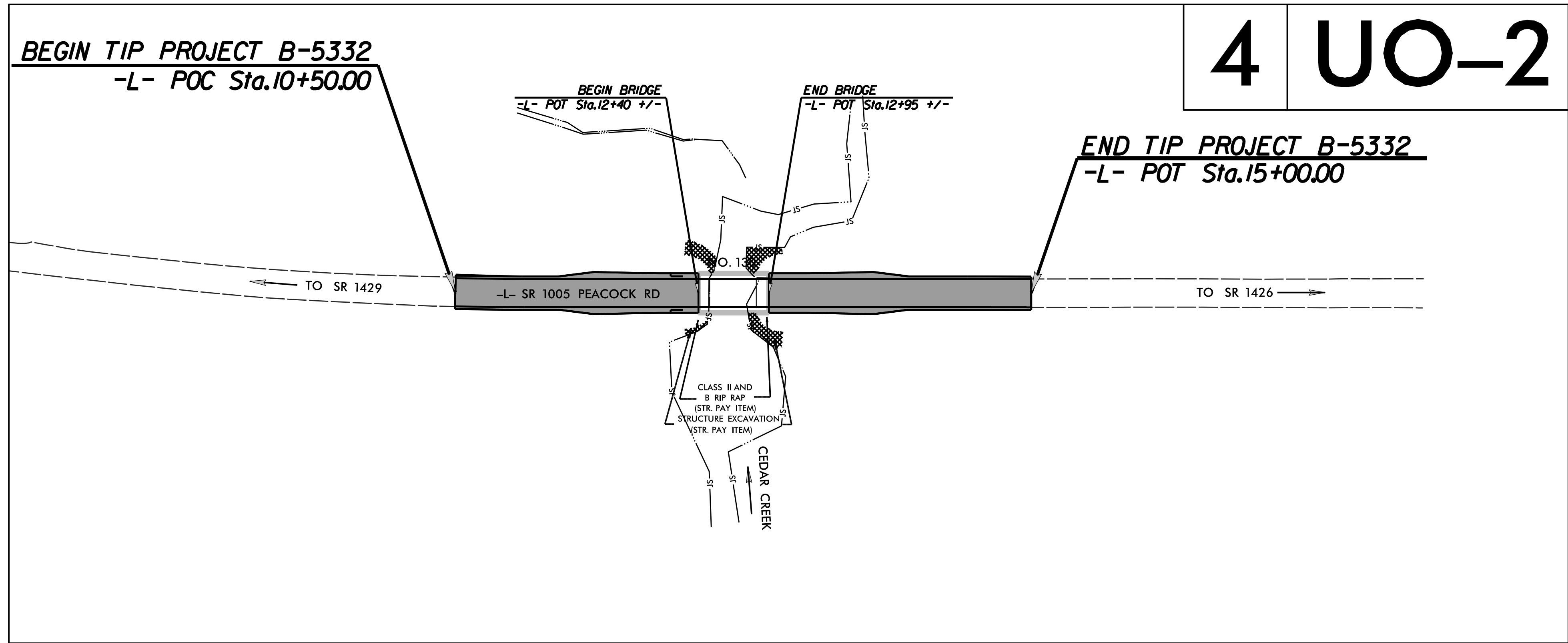
NOTE:
 ALL UTILITY WORK SHOWN ON THIS SHEET IS DONE BY OTHERS.
 NO PAYMENT WILL BE MADE TO THE CONTRACTOR FOR UTILITY WORK SHOWN ON THIS SHEET.



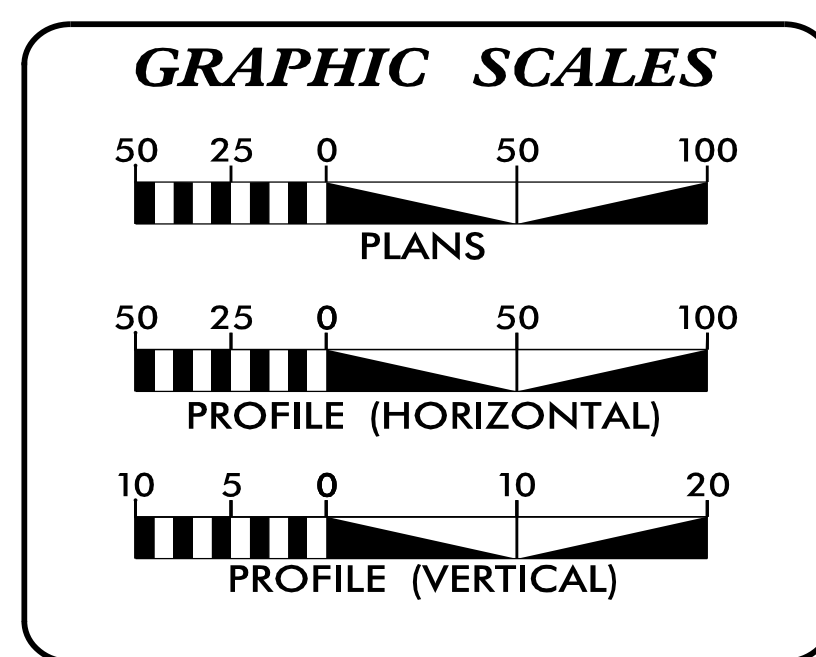
STATE OF NORTH CAROLINA
 DIVISION OF HIGHWAYS
UTILITIES BY OTHERS PLANS
COLUMBUS COUNTY

LOCATION: REPLACE BRIDGE NO. 130 OVER CEDAR CREEK
 ON SR 1005 (PEACOCK ROAD)

TYPE OF WORK: PROPOSED COMMUNICATIONS & WATER RELOCATIONS



THERE IS NO CONTROL OF ACCESS ON THIS PROJECT.
 THIS PROJECT IS NOT WITHIN ANY MUNICIPAL BOUNDARIES.
 CLEARING ON THIS PROJECT SHALL BE PERFORMED TO THE LIMITS ESTABLISHED BY METHOD ___.



INDEX OF SHEETS

SHEET NO.:	DESCRIPTION:
UO-1	TITLE SHEET
UO-2	UBO PLAN SHEET

UTILITY OWNERS WITH CONFLICTS

(A) CENTURYLINK - COMMUNICATIONS
 (B) COLUMBUS COUNTY - WATER

PREPARED IN THE OFFICE OF:

JOHN FAISON UTILITY PROJECT MANAGER
JOSH BARBOUR PROJECT UTILITY COORDINATOR
JOSH BARBOUR PROJECT UTILITY DESIGNER

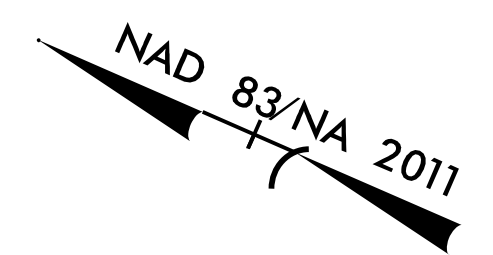
**DIVISION OF HIGHWAYS
 UTILITIES UNIT**
 1555 MAIL SERVICES CENTER
 RALEIGH, NC 27699-1555
 PHONE (919) 707-6690
 FAX (919) 250-4151

BO HEMPHILL UTILITIES REGIONAL ENGINEER
ASHLEY COX UTILITIES ENGINEER
ED REAMS UTILITIES AREA COORDINATOR
LARRY JAMES JR. UTILITIES COORDINATOR

8:56:08 AM
 290_001_B5332_ut_+sh_U001.psh.dgn
 Division:

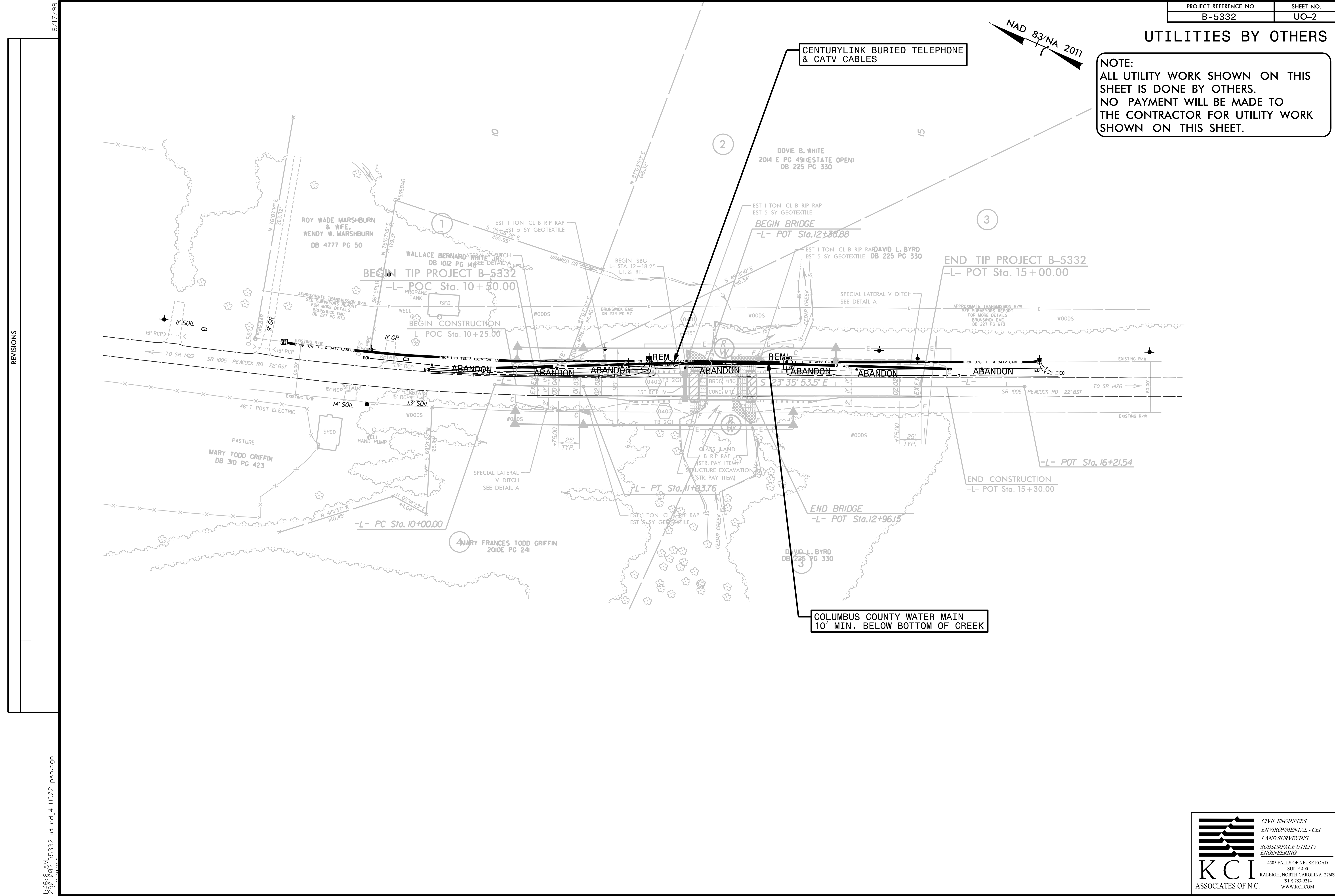
UTILITIES BY OTHERS

NOTE:
ALL UTILITY WORK SHOWN ON THIS SHEET IS DONE BY OTHERS.
NO PAYMENT WILL BE MADE TO THE CONTRACTOR FOR UTILITY WORK SHOWN ON THIS SHEET.



CENTURYLINK BURIED TELEPHONE & CATV CABLES

COLUMBUS COUNTY WATER MAIN
10' MIN. BELOW BOTTOM OF CREEK



REVISIONS

8/17/99

I:\4648_AM
290_002_B5332_ut_rdy4_U002.psh.dgn
Division

KCI
ASSOCIATES OF N.C.

CIVIL ENGINEERS
ENVIRONMENTAL - CEI
LAND SURVEYING
SUBSURFACE UTILITY
ENGINEERING

4505 FALLS OF NEUSE ROAD
SUITE 400
RALEIGH, NORTH CAROLINA 27609
(919) 783-9214
WWW.KCI.COM