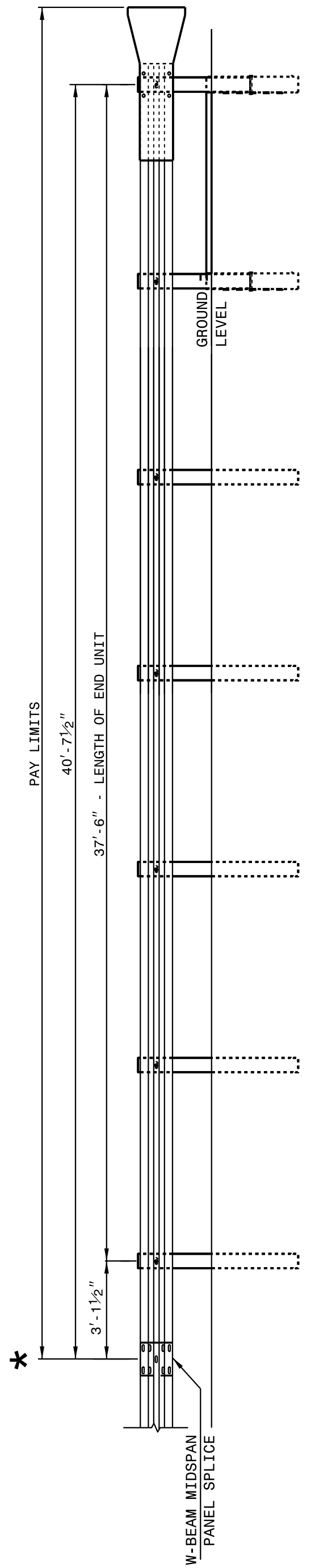


24-MAY-2017 10:09 S:\Contracts\Special Details\Howerton\Standard Drawings\Division 8\862d01 862d03 862d03\862d02.dgn
 S:\Contracts\Special Details\Howerton\Standard Drawings\Division 8\862d01 862d03 862d03\862d02.dgn
 .Howerton AT_CSD-292955

STATE OF NORTH CAROLINA DEPT. OF TRANSPORTATION DIVISION OF HIGHWAYS RALEIGH, N.C.

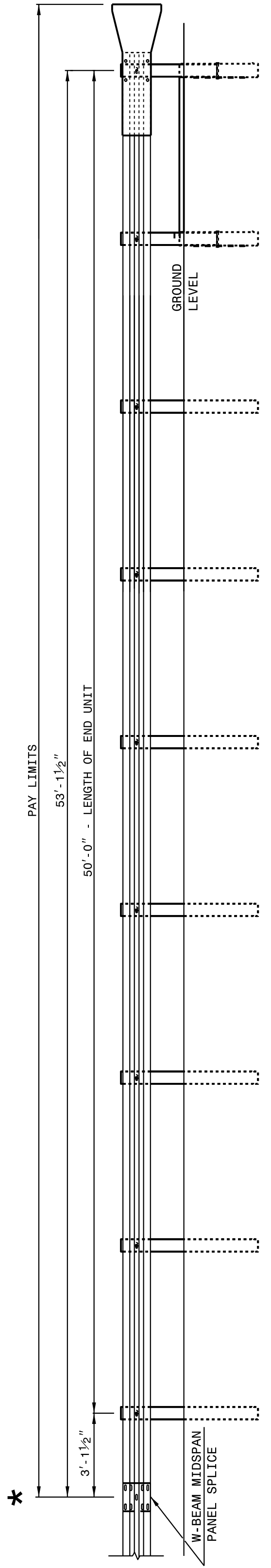
ROADWAY DETAIL DRAWING FOR GUARDRAIL INSTALLATION

SHEET 2 OF 8 **862D02**



FLARED AND TANGENT ELEVATION VIEW

* WHEN INSTALLING GUARDRAIL END UNITS THAT ARE 2'-1" MOUNTING HEIGHT TO EXISTING GUARDRAIL, REMOVE THE EXISTING GUARDRAIL TO TRANSITION FROM THE EXISTING HEIGHT TO THE PROPOSED 2'-1" HEIGHT. SEE 862.02, SHEET 4 OF 8 FOR TRANSITION DETAILS.



FLARED AND TANGENT ELEVATION VIEW

APPROACH END UNITS

STATE OF NORTH CAROLINA DEPT. OF TRANSPORTATION DIVISION OF HIGHWAYS RALEIGH, N.C.

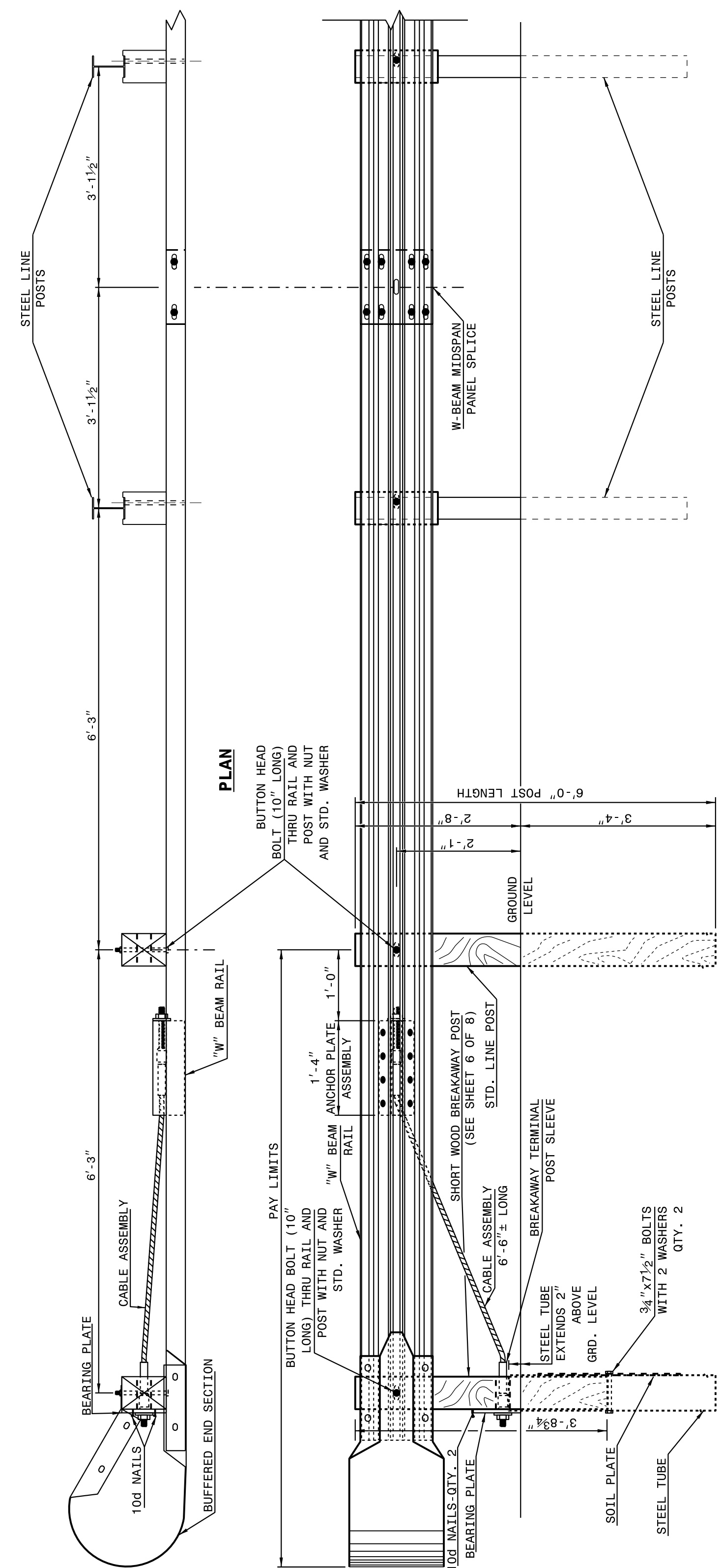
ROADWAY DETAIL DRAWING FOR GUARDRAIL INSTALLATION

SHEET 2 OF 8 **862D02**

STATE OF NORTH CAROLINA DEPT. OF TRANSPORTATION DIVISION OF HIGHWAYS RALEIGH, N.C.

ROADWAY DETAIL DRAWING FOR GUARDRAIL INSTALLATION

SHEET 1 OF 8 **862D02**



TRAILING END UNIT ASSEMBLY C.A.T.-1 SYSTEM

STATE OF NORTH CAROLINA DEPT. OF TRANSPORTATION DIVISION OF HIGHWAYS RALEIGH, N.C.

ROADWAY DETAIL DRAWING FOR GUARDRAIL INSTALLATION

SHEET 1 OF 8 **862D02**

DOCUMENT NOT CONSIDERED FINAL UNLESS ALL SIGNATURES COMPLETED

CONTRACT STANDARDS AND DEVELOPMENT UNIT
Office 919-707-6950 FAX 919-250-4119

SEE TITLE BLOCK

ORIGINAL BY: J HOWERTON	DATE: 06-22-12
MODIFIED BY:	DATE:
CHECKED BY:	DATE:
FILE SPEC.:	

