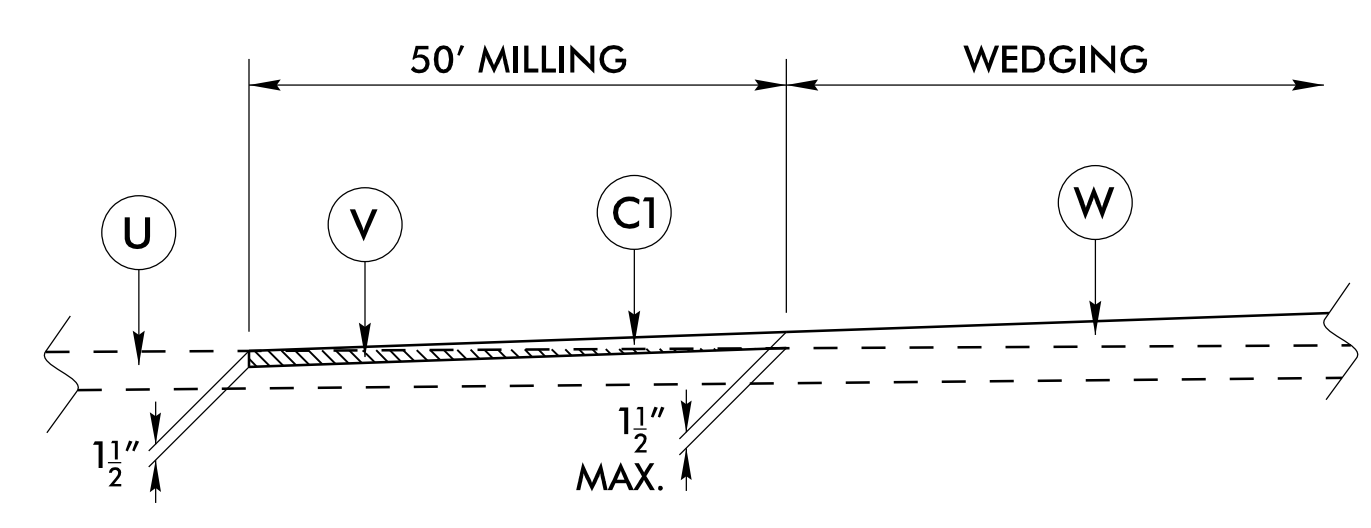


6/2/09

### PAVEMENT SCHEDULE (FINAL PAVEMENT DESIGN)

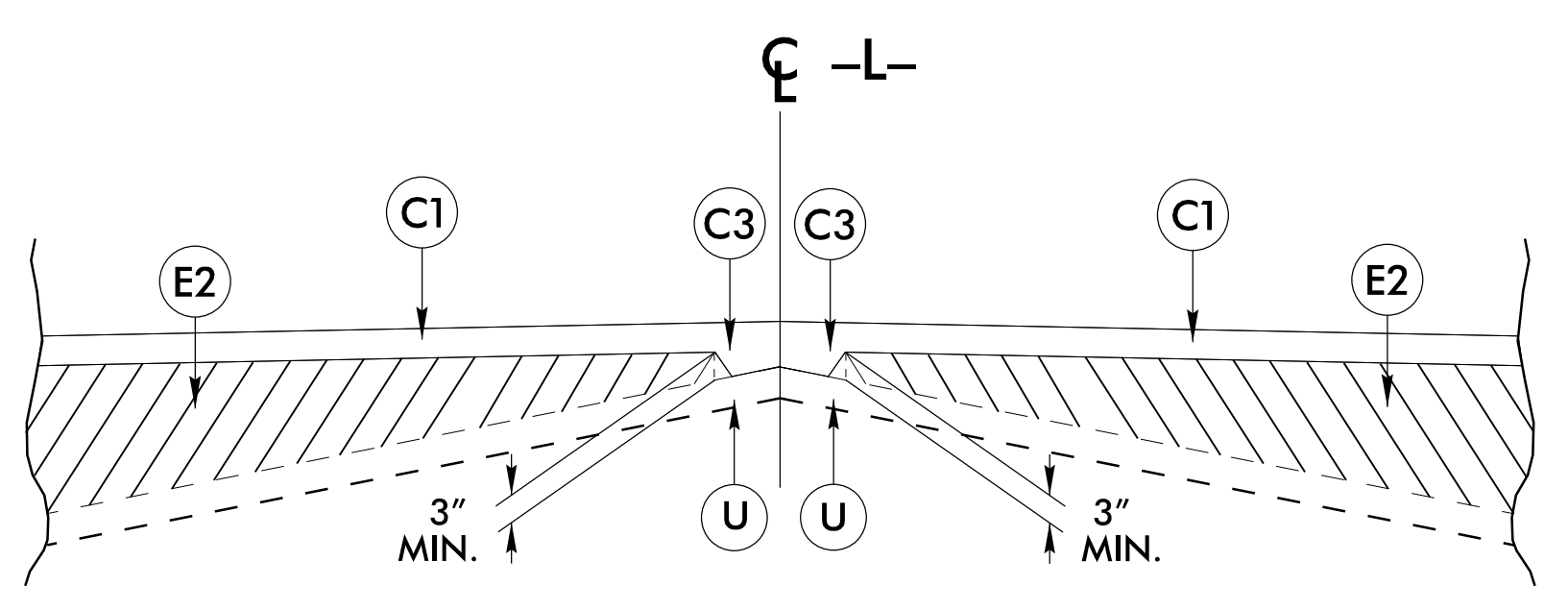
C1	PROP. APPROX. 1½" ASPHALT CONCRETE SURFACE COURSE, TYPE S9.5B, AT AN AVERAGE RATE OF 168 LBS. PER SQ. YD.
C2	PROP. APPROX. 3" ASPHALT CONCRETE SURFACE COURSE, TYPE S9.5B, AT AN AVERAGE RATE OF 168 LBS. PER SQ. YD. IN EACH OF TWO LAYERS.
C3	PROP. VAR. DEPTH ASPHALT CONCRETE SURFACE COURSE, TYPE S9.5B, AT AN AVERAGE RATE OF 112 LBS. PER SQ. YD. PER 1" DEPTH TO BE PLACED IN LAYERS NOT TO EXCEED 1½" IN DEPTH.
E1	PROP. APPROX. 4" ASPHALT CONCRETE BASE COURSE, TYPE B25.0B, AT AN AVERAGE RATE OF 456 LBS. PER SQ. YD.
E2	PROP. VAR. DEPTH ASPHALT CONCRETE BASE COURSE, TYPE B25.0B, AT AN AVERAGE RATE OF 114 LBS. PER SQ. YD. PER 1" DEPTH TO BE PLACED IN LAYERS NOT LESS THAN 3" IN DEPTH OR GREATER THAN 5½" IN DEPTH.
T	EARTH MATERIAL
U	EXISTING PAVEMENT
V	MILLING ASPHALT PAVEMENT (0" TO 1½")
W	VARIABLE DEPTH ASPHALT PAVEMENT (SEE WEDGING DETAIL)

NOTE: ALL PAVEMENT SLOPES 1:1 UNLESS NOTED OTHERWISE

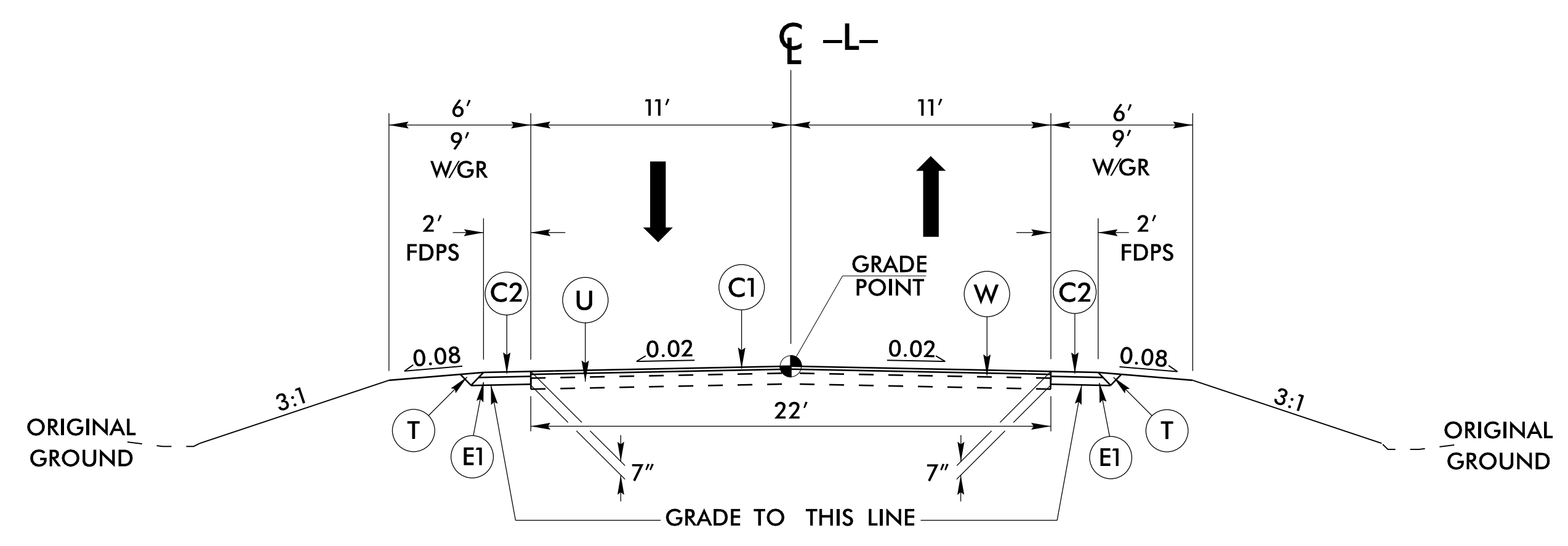


**DETAIL OF MILLING AT PAVEMENT TIE-INS**

**\*\*USE DETAIL**  
 -L- STA. 10+00.00 TO -L- STA. 10+50.00  
 -L- STA. 15+00.00 TO -L- STA. 15+50.00



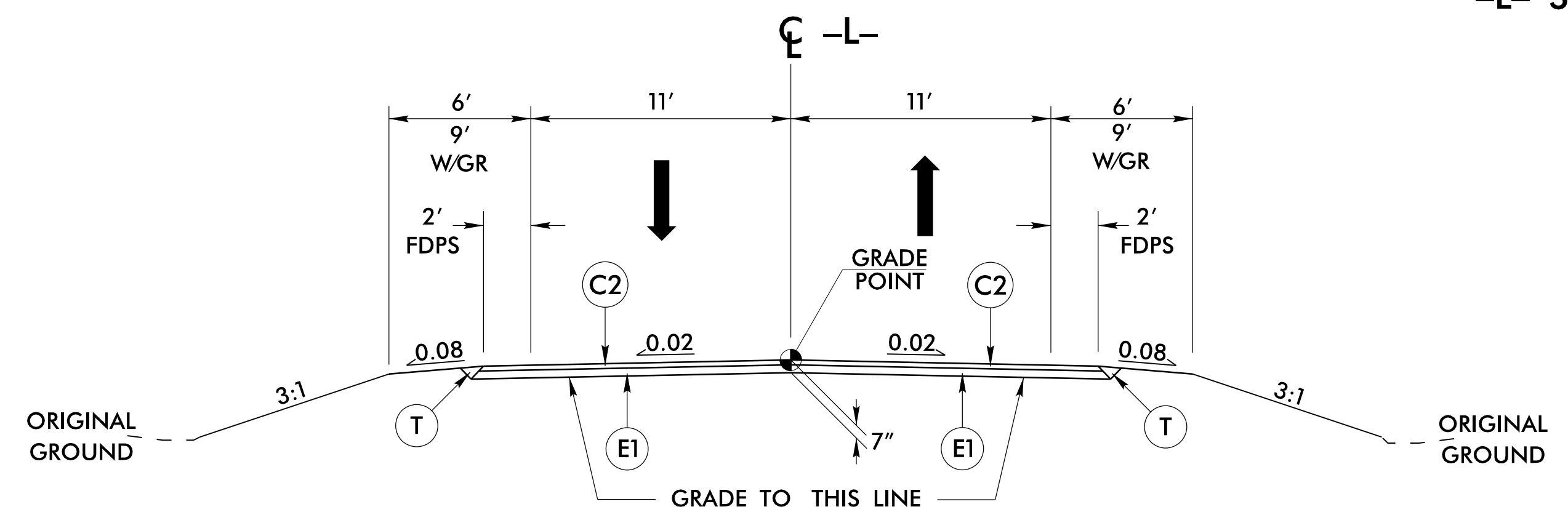
**STANDARD WEDGING DETAIL**



**TYPICAL SECTION NO. 1**

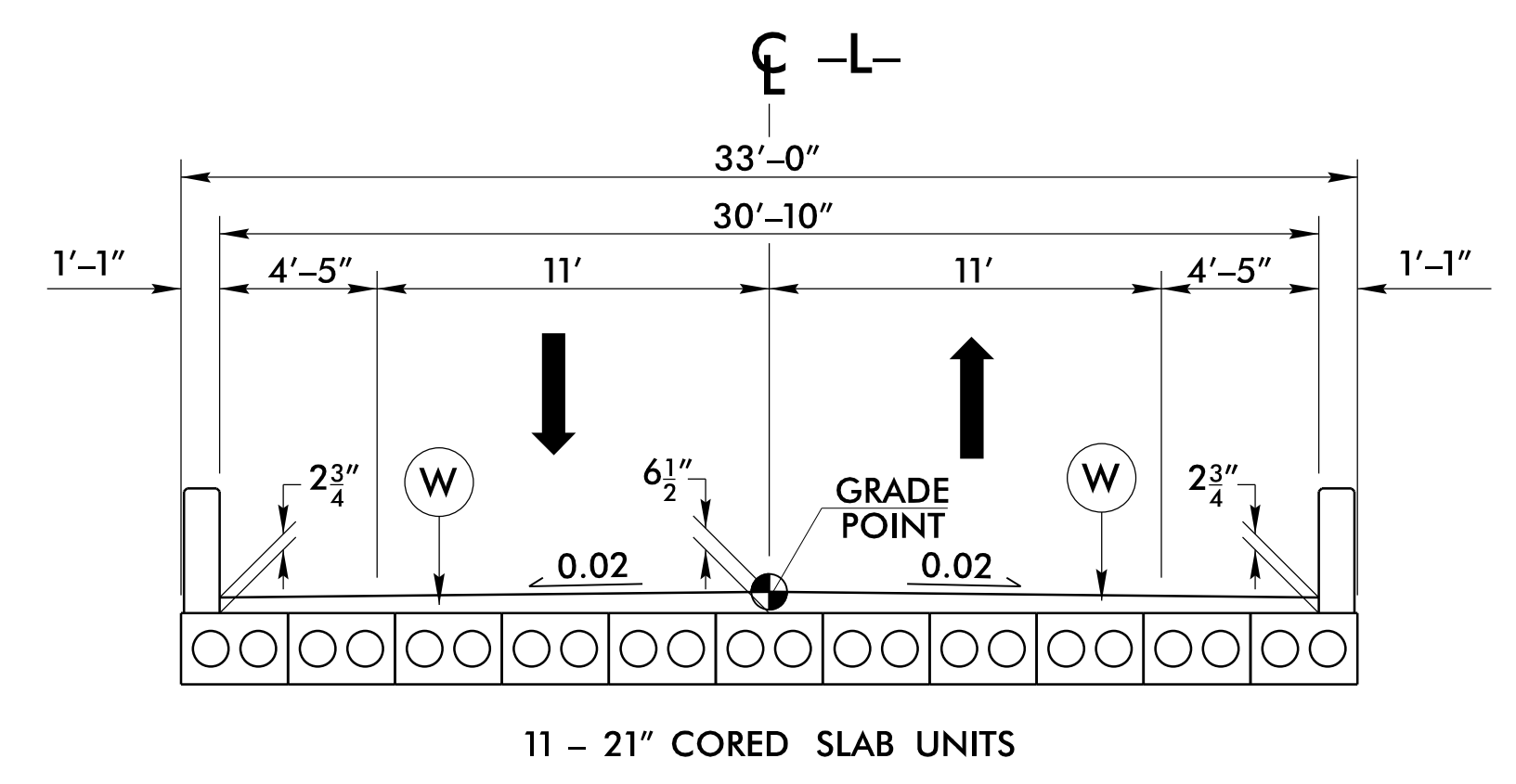
**\*\* SEE DETAIL FOR LIMITS OF MILLING**

**USE TYPICAL SECTION NO. 1**  
 -L- STA. 10+50.00 TO -L- STA. 10+90.00  
 -L- STA. 14+45.00 TO -L- STA. 15+00.00



**TYPICAL SECTION NO. 2**

**USE TYPICAL SECTION NO. 2**  
 -L- STA. 10+90.00 TO -L- STA. 12+38.88 (BEGIN BRIDGE)  
 -L- STA. 12+96.13 (END BRIDGE) TO -L- STA. 14+45.00



**TYPICAL SECTION ON STRUCTURE**

**USE TYPICAL SECTION ON STRUCTURE**  
 -L- STA. 12+38.88 (BEGIN BRIDGE) TO -L- STA. 12+96.13 (END BRIDGE)

PROJECT REFERENCE NO. B-5332	SHEET NO. 2A-1
ROADWAY DESIGN ENGINEER JIM J. GALLAGHER 040478 5/1/2017	PAVEMENT DESIGN ENGINEER CLARK S. MORRISON 022896 7/28/2017

**DOCUMENT NOT CONSIDERED FINAL UNLESS ALL SIGNATURES COMPLETED**



05-APR-2017 13:49  
 R:\Projects\B5332\_Rdy\_tjpr.dgn  
 B5332.DSRNAME