

**This electronic collection of documents is provided
for the convenience of the user
and is Not a Certified Document –**

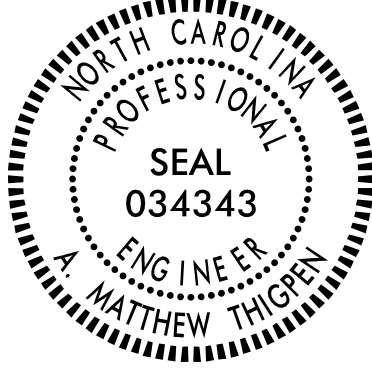
**The documents contained herein were originally issued
and sealed by the individuals whose names and license
numbers appear on each page, on the dates appearing
with their signature on that page.**

**This file or an individual page
shall not be considered a certified document.**

**STATE OF NORTH CAROLINA
DEPARTMENT OF TRANSPORTATION**

**SIGNING PLAN
WAYNE COUNTY**

LOCATION: US-117 & SR-1120 INTERCHANGE

PROJECT REFERENCE NO. U-5796	SHEET NO. SIGN-1
APPROVED: _____	
DATE: _____	
SEAL	
	

T.I.P.: U-5796

ROADWAY STANDARD DRAWING

THE FOLLOWING ROADWAY STANDARDS AS APPEAR IN "ROADWAY STANDARD DRAWINGS" - PROJECT SERVICES UNIT - N.C. DEPARTMENT OF TRANSPORTATION - RALEIGH, N.C., DATED JANUARY 2012 ARE APPLICABLE TO THIS PROJECT AND BY REFERENCE HEREBY ARE CONSIDERED A PART OF THESE PLANS:

STD. NO.	TITLE
901.10	TYPE 'A' SIGNS
901.20	TYPE 'B' SIGNS
901.50	ARROWS AND SHIELDS
901.70	SIGN STRINGERS AND SUPPORT SPACING
901.80	SIGN MOUNTING DETAILS - FOR TYPE A AND TYPE B SIGNS
903.10	GROUND MOUNTED SIGN SUPPORTS
904.10	ORIENTATION OF GROUND MOUNTED SIGNS
904.50	MOUNTING OF TYPE 'D', 'E' AND 'F' SIGNS ON 'U' CHANNEL POSTS

PROJECT NOTES

1. DISPOSAL OF SIGN SYSTEM, U CHANNEL
2. SIGN ERECTION, RELOCATE SIGN TYPE E
3. DISPOSAL OF SUPPORT, U-CHANNEL
4. SIGN ERECTION, RELOCATE SIGN TYPE D

GENERAL NOTES

- SIGNS FURNISHED BY STATE
- ALL TYPE 'D' SIGNS SHALL BE MOUNTED ON TWO U-CHANNEL POSTS UNLESS OTHERWISE INDICATED ON THE PLANS.
- IF REMOVAL OR RELOCATION OF SIGNS ON PRIVATE STREET (NON-STATE MAINTAINED) IS REQUIRED DUE TO CONSTRUCTION, THE CONTRACTOR SHALL INFORM THE ENGINEER. THE WORK WILL BE COMPLETED BY OTHERS.
- WHEN NOT STATIONED OR DIMENSIONED ON PLANS, ALL 'E' AND 'F' SIGNS SHALL BE FIELD LOCATED BY THE ENGINEER
- ALL EXISTING SIGNS ON "U" CHANNEL POST WITHIN THE PROJECT LIMITS SHALL BE REMOVED AND DISPOSED OF UNLESS OTHERWISE NOTED ON PLANS.
- WHEN EXISTING SIGNS ARE REMOVED AND INSTALLED ON NEW SUPPORTS, THE RE-ERECTION SHALL IMMEDIATELY FOLLOW THE REMOVAL.
- THE BACKGROUND FOR TYPE E & F SIGNS SHALL BE TYPE C REFLECTIVE SHEETING.
- DO NOT BEGIN FABRICATION FOR TYPES A & B SIGNS MOUNTED ON OVERHEAD STRUCTURES OR STEEL SUPPORTS UNTIL "S" DIMENSIONS HAVE BEEN FIELD VERIFIED.
- SEE ROADWAY PLANS FOR GUARD/GUIDE RAIL DETAILS.

SUMMARY OF QUANTITIES

ITEM NO.		ITEM DESCRIPTION	QUANTITY	UNIT
DESC. NO.	SECT. NO.			
4048000000	902	REINFORCED CONCRETE SIGN FOUNDATION	3.0	C.Y.
4054000000	902	PLAIN CONCRETE SIGN FOUNDATION	1.0	C.Y.
4060000000	903	SUPPORTS, BREAKAWAY STEEL BEAM	3,470	LB.
4072000000	903	SUPPORTS, 3 LB STEEL U-CHANNEL	944	L.F.
4096000000	904	SIGN ERECTION, TYPE D	7	EA.
4102000000	904	SIGN ERECTION, TYPE E	22	EA.
4108000000	904	SIGN ERECTION, TYPE F	10	EA.
4110000000	904	SIGN ERECTION, TYPE A (GROUND MOUNTED)	8	EA.
4110000000	904	SIGN ERECTION, TYPE B (GROUND MOUNTED)	1	EA.
4116100000	904	SIGN ERECTION, RELOCATE SIGN TYPE D	2	EA.
4116100000	904	SIGN ERECTION, RELOCATE SIGN TYPE E	4	EA.
4155000000	907	DISPOSAL OF SIGN SYSTEM, U-CHANNEL	27	EA.
4192000000	907	DISPOSAL OF SUPPORT, U-CHANNEL	8	EA.

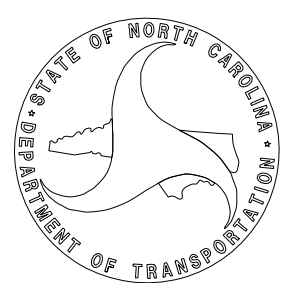
INDEX

SHEET NO.	DESCRIPTION
SIGN-1	TITLE SHEET
SIGN-2 - 2B	SUPPORT INFORMATION
SIGN-3	E AND F SHEETS
SIGN-4A-4C	SIGN DESIGNS
SIGN-5-11	SIGNING PLAN SHEETS

PLAN PREPARED BY: N.C.D.O.T. SIGNING AND DELINEATION UNIT

SIGNING & DELINEATION REGIONAL ENGINEER

SIGNING & DELINEATION PROJECT DESIGN ENGINEER



PLAN PREPARED BY: VHB Engineering NC, P.C.

Jody Lewis, PE PROJECT ENGINEER
A. Matthew Thigpen, PE PROJECT DESIGN ENGINEER



940 Main Campus Drive, Suite 500
Raleigh, NC 27606
P: (919) 829-0328
NC License No. C-3705

APPROVED: _____

DATE: _____



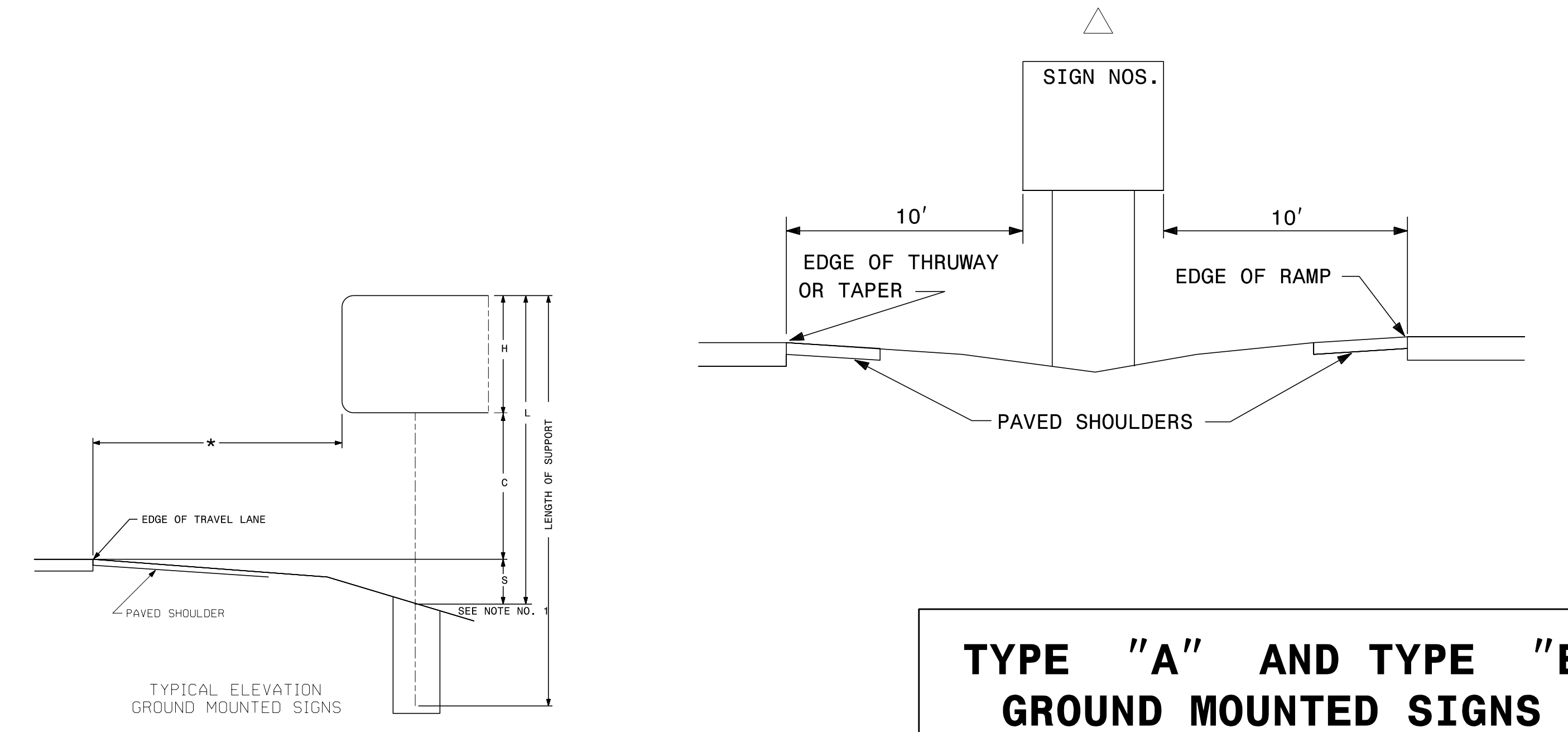
Version: 3.0 Posted: 9/14/2016

NUMBER	TYPE	SIGN			ROADWAY STATION	NUMBER OF SUPPORTS	BEAM SECTION	SUPPORT TYPE BA or S	OMNI COUPLER	ATTACHMENT METHOD	MOUNTING METHOD	HORIZONTAL CLEARANCE* (ft.)	SUPPORT SPACING	LENGTH (ft)			LEFT SUPPORT (ft)			CENTER SUPPORT (ft)			RIGHT SUPPORT (ft)			SUPPORT WEIGHTS		FOOTINGS				FIELD VERIFIED SEE NOTE 2 (mm/dd/yy)
		w	x	h										SNS HT	MTG HT	EMBED-MENT	S	L	LENGTH	S	L	TOTAL LENGTH	S	L	LENGTH	B/A (lbs.)	SIMPLE (lbs.)	DIAMETER (ft.)	DEPTH (ft.)	REINFORCED (c.y.)	PLAIN (c.y.)	
		"H"	"C"											S	L		S	L		B/A	SIMPLE	DIAMETER	DEPTH	REINFORCED	PLAIN							
101	A	168	x	84		2	W6x12	BA	N/A	N/A	N/A	30.00	8.20	7.00	7.00	3.5	2.50	16.50	20.00	0.00	0.00	0.00	1.20	15.20	18.70	542.40	0	1.5	4	0.52	0.00	
102	A	150	x	60		2	S4x7.7	BA	N/A	N/A	N/A	30.00	7.33	5.00	7.00	3.5	2.20	14.20	17.70	0.00	0.00	0.00	0.95	12.95	16.45	302.96	0	1.0	4	0.00	0.23	
103	A	168	x	96	180+50	2	W6x12	BA	N/A	N/A	N/A	30.00	8.20	8.00	7.00	3.5	2.07	17.07	20.57	0.00	0.00	0.00	0.71	15.71	19.21	555.36	0	1.5	4	0.52	0.00	
104	A	168	x	96	211+50	2	W6x12	BA	N/A	N/A	N/A	30.00	8.20	8.00	7.00	3.5	1.73	16.73	20.23	0.00	0.00	0.00	0.24	15.24	18.74	545.64	0	1.5	4	0.52	0.00	
105	A	150	x	60	230+40	2	W6x9	BA	N/A	N/A	N/A	30.00	7.33	5.00	7.00	3.0	1.20	13.20	16.20	0.00	0.00	0.00	3.10	15.10	18.10	372.70	0	1.5	3.5	0.46	0.00	
106	A	168	x	84	237+90	2	W6x12	BA	N/A	N/A	N/A	30.00	8.20	7.00	7.00	3.5	1.76	15.76	19.26	0.00	0.00	0.00	3.67	17.67	21.17	563.16	0	1.5	4	0.52	0.00	
107	B	114	x	30		2	S3x5.7	BA	N/A	N/A	N/A	30.00	5.57	2.50	7.00	2.0	1.80	11.30	13.30	0.00	0.00	0.00	2.70	12.20	14.20	192.75	0	1.0	2.5	0.00	0.15	
201	B	48	x	54	187+75	2	S3x5.7	BA	N/A	N/A	N/A	Δ	2.34	4.50	7.00	2.0	0.46	11.96	13.96	0.00	0.00	0.00	0.56	12.06	14.06	195.71	0	1.0	2.5	0.00	0.15	
202	B	48	x	54	206+00	2	S3x5.7	BA	N/A	N/A	N/A	Δ	2.34	4.50	7.00	2.0	1.12	12.62	14.62	0.00	0.00	0.00	0.45	11.95	13.95	198.85	0	1.0	2.5	0.00	0.15	

TOTAL	TOTAL	TOTAL	TOTAL
3469.53	0.00	2.55	0.67
USE:	3470.00	0.00	3.00 1.00

NOTES

- DIMENSION "S" REPRESENTS AN INCREASE (+), OR A DECREASE (-) IN POLE LENGTH, RELATIVE TO THE ELEVATION OF THE EDGE OF PAVEMENT.
- FIELD VERIFICATIONS SHALL BE REQUIRED FOR ALL SUPPORTS, SEE (*) ARTICLE 903-3. FABRICATORS SHALL BE AISC CERTIFIED IN CATEGORY 1, SEE (*) ARTICLE 1072-1. (*) = N.C.D.O.T. STANDARD SPECIFICATIONS FOR ROADS AND STRUCTURES
- PLAN LOCATIONS FOR EXISTING UTILITIES ARE BASED ON THE BEST AVAILABLE INFORMATION AND, THEREFORE MAY NOT BE PRECISELY ACCURATE. THEREFORE, IT IS INCUMBENT UPON THE CONTRACTOR TO DETERMINE THE EXACT LOCATION OF UTILITIES BEFORE BEGINNING WORK IN A LOCATION.
- IF THE GROUNDWATER IS ENCOUNTERED AT A DEPTH SHALLOWER THAN 7 FEET, THE SIGN FOUNDATION MUST BE REDESIGNED BASED UPON THE ACTUAL FIELD CONDITIONS. THE FOUNDATION DESIGN DOES NOT APPLY TO VERY SOFT OR LOOSE SOIL, MUCK, WEATHERED ROCK, OR HARD ROCK.



TYPE "A" AND TYPE "B" GROUND MOUNTED SIGNS

2/2/2017 \\vh6\proj\raleigh\38527.dwg User:rlh User:rlh 11-23-15.dgn

APPROVED: _____

DATE: _____

SEAL



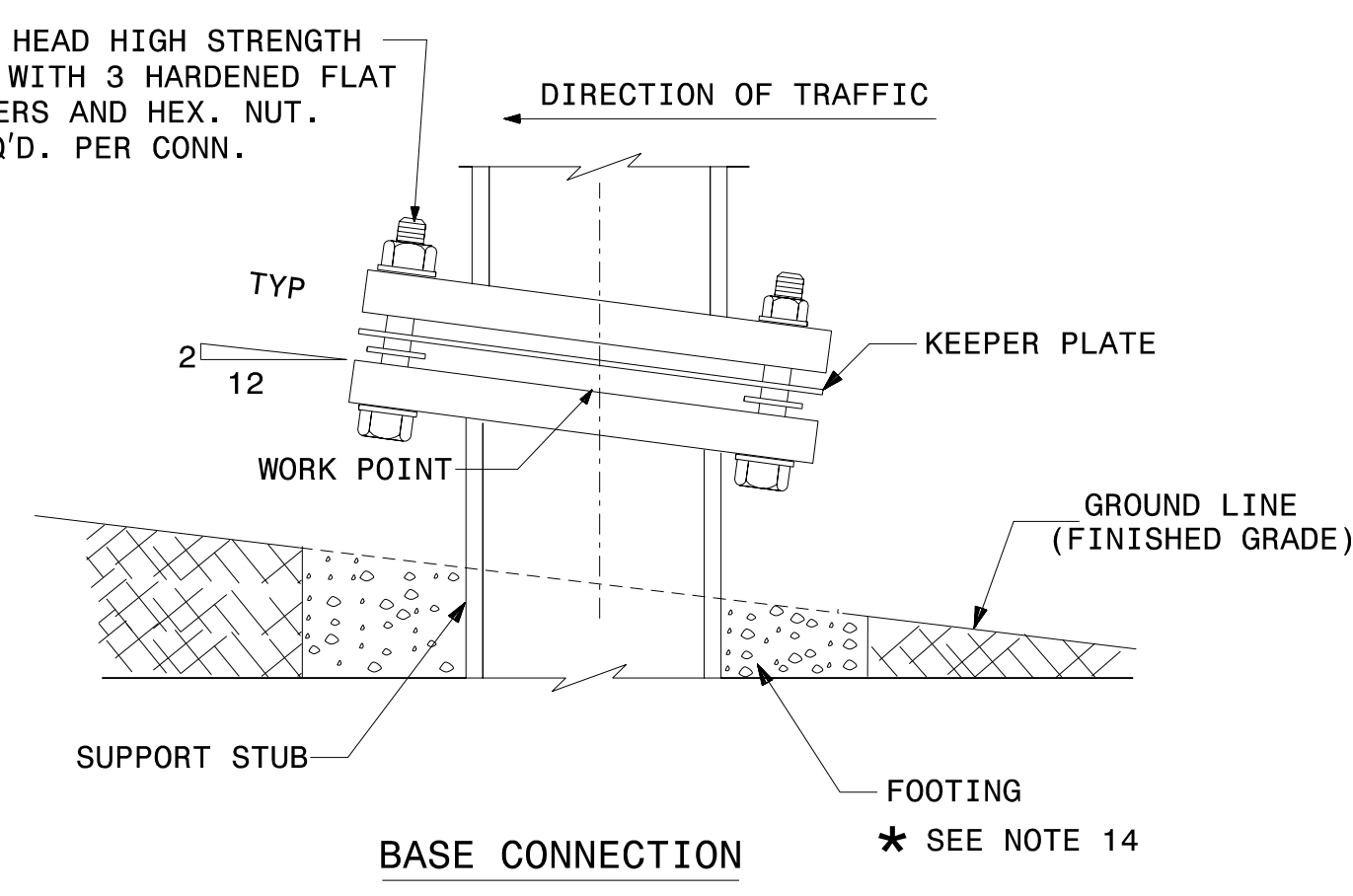
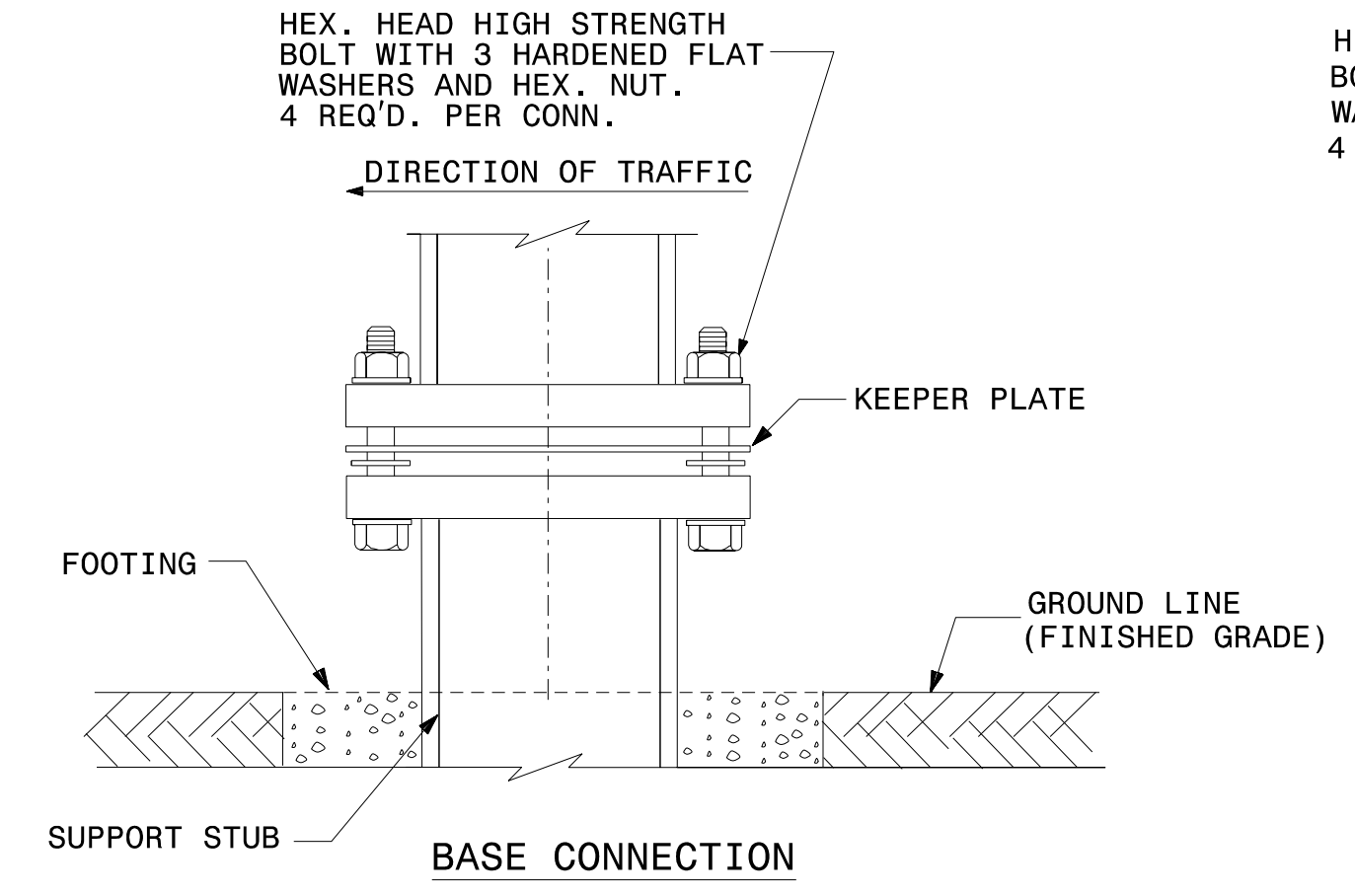
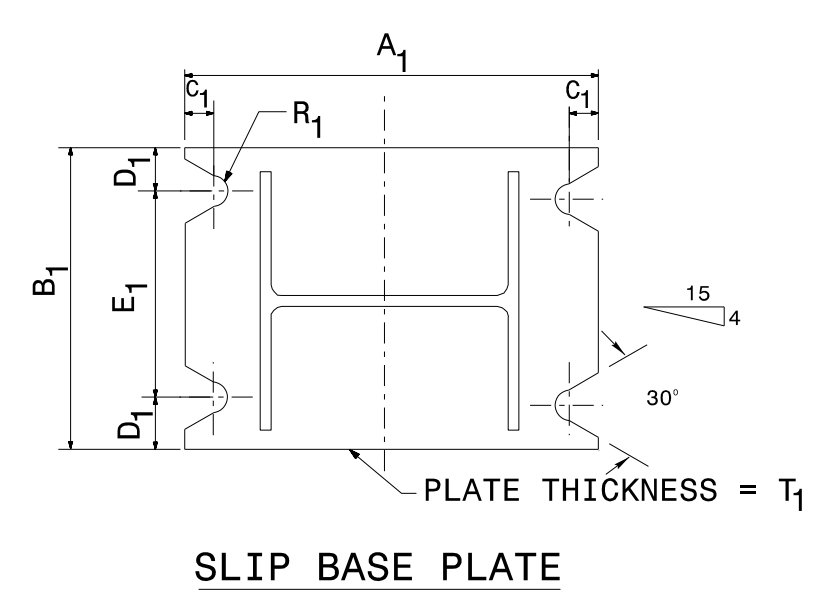
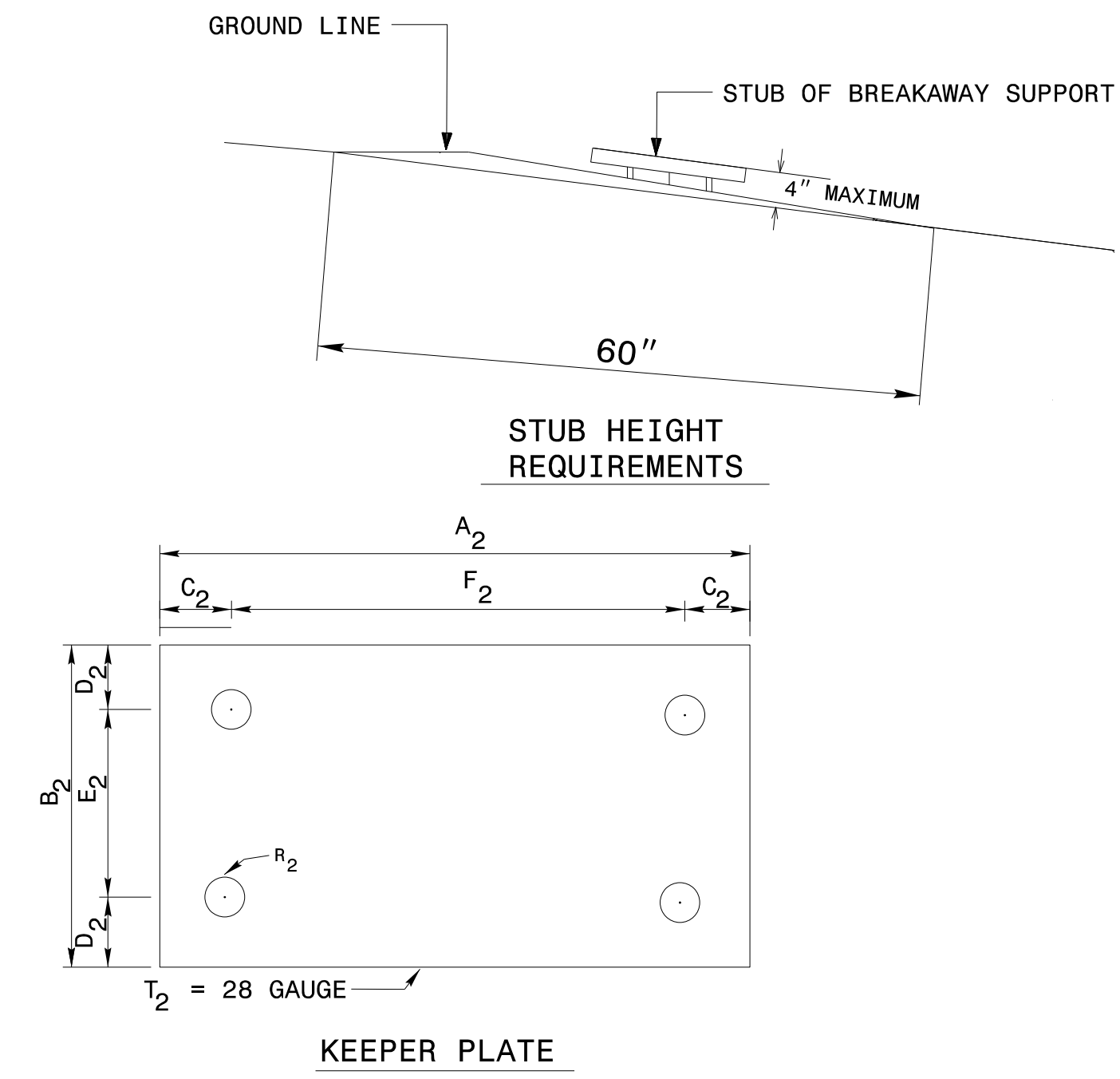
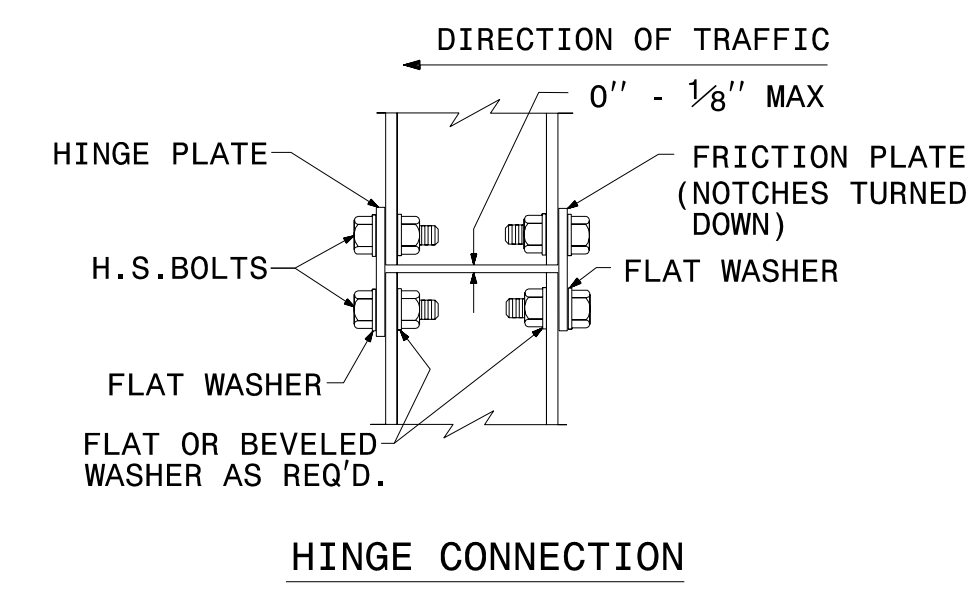
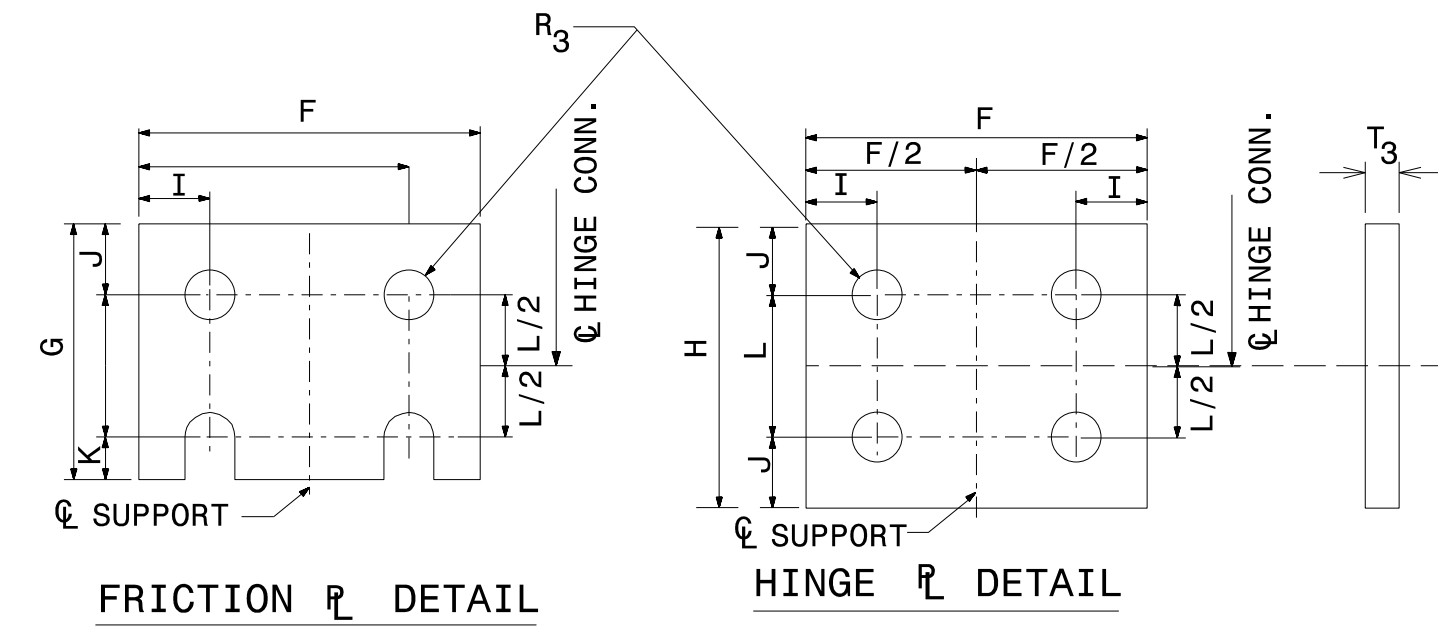
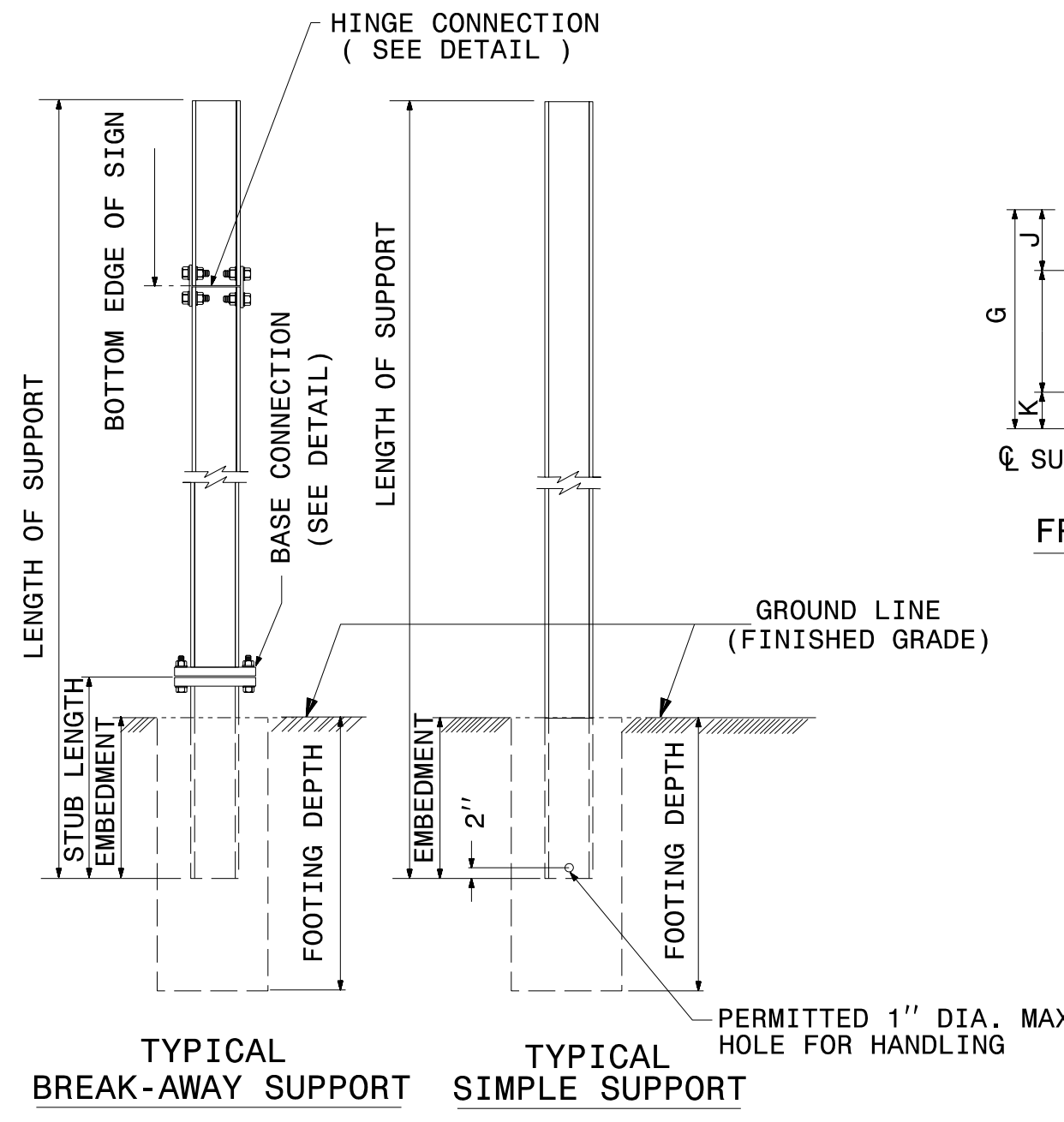
STATE OF NORTH CAROLINA
DEPT. OF TRANSPORTATION
DIVISION OF HIGHWAYS
RALEIGH, N.C.

1-12

ENGLISH STANDARD DRAWING FOR
GROUND MOUNTED SIGN SUPPORTS

SHEET 1 OF 3

903D10



SEE SHEET 2 OF 3 FOR
BASE CONNECTION DATA
HINGE CONNECTION DATA
& FOUNDATION DATA.
SEE SHEET 3 OF 3 FOR
GENERAL NOTES.

STATE OF NORTH CAROLINA
DEPT. OF TRANSPORTATION
DIVISION OF HIGHWAYS
RALEIGH, N.C.

1-12

ENGLISH STANDARD DRAWING FOR
GROUND MOUNTED SIGN SUPPORTS

SHEET 1 OF 3

903D10

3/28/2017 11:23:15.dgn User: mthigpen

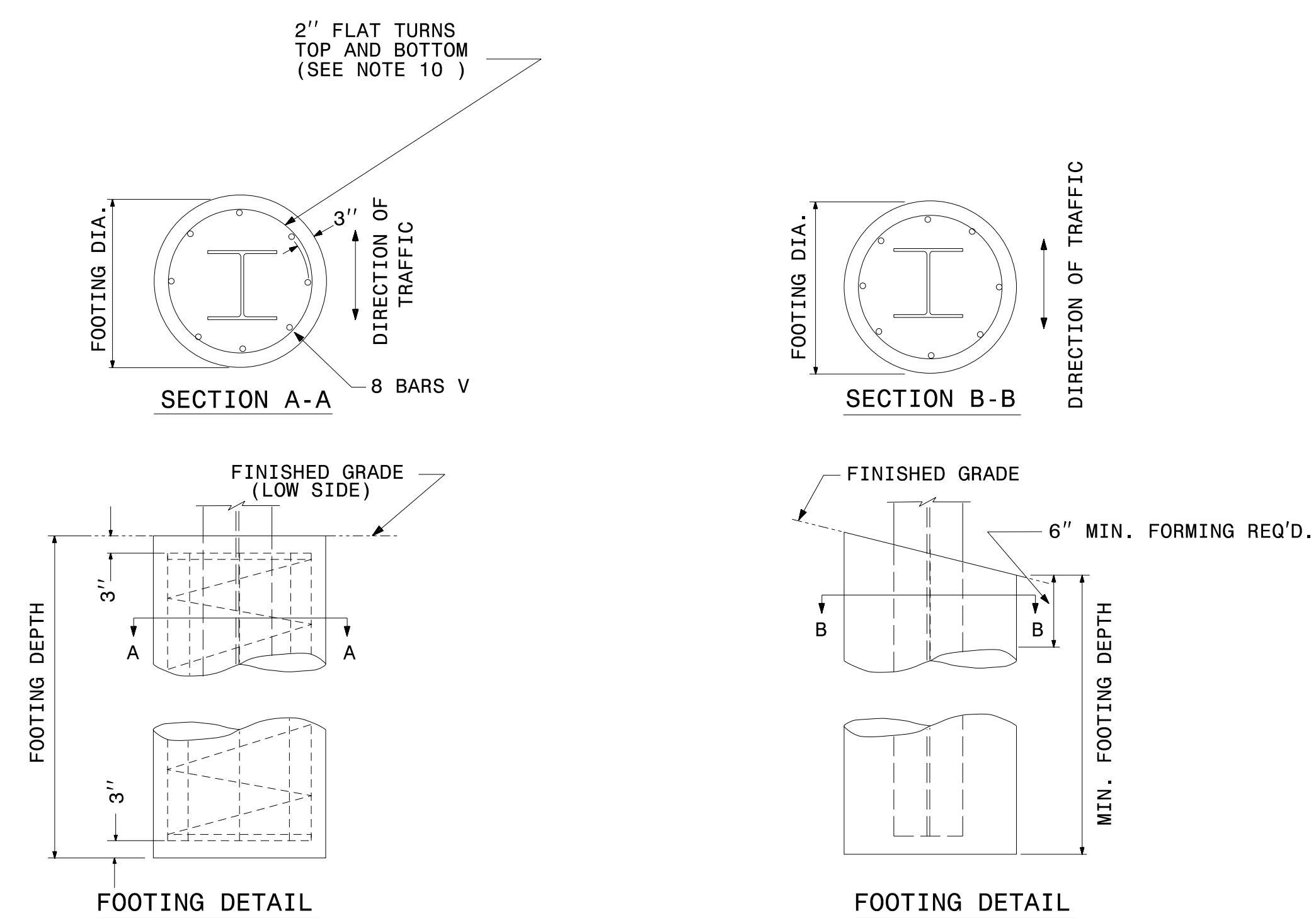


STATE OF NORTH CAROLINA
DEPT. OF TRANSPORTATION
DIVISION OF HIGHWAYS
RALEIGH, N.C.

ENGLISH DETAIL DRAWING FOR
GROUND MOUNTED SIGN SUPPORTS

SHEET 2 OF 3
903D10

BEAM SHAPE	SLIP BASE PLATE DATA								KEEPER PLATE DATA								HINGE CONNECTION DATA								BREAK AWAY SUPPORT WEIGHT CONSTANT LBS.	
	BOLT SIZE	A ₁	B ₁	C ₁	D ₁	E ₁	T ₁	R ₁	A ₂	B ₂	C ₂	D ₂	E ₂	R ₂	T ₂	BOLT SIZE	F	G	H	I	J	K	L	R ₃		T ₃
S3X5.7	1/2" DIA. X 3 1/4"	7"	4"	1"	3/4"	2 1/2"	1"	9/32"	7"	4"	1"	3/4"	2 1/2"	9/32"	28 GAUGE	1/2" DIA. X 1 3/4"	2 1/4"	3 1/2"	4"	1/2"	1"	1/2"	2"	9/32"	3/8"	18
S4X7.7	1/2" DIA. X 3 1/4"	8"	4"	1"	3/4"	2 1/2"	1"	9/32"	8"	4"	1"	3/4"	2 1/2"	9/32"	28 GAUGE	1/2" DIA. X 1 3/4"	2 5/8"	3 1/2"	4"	1/2"	1"	1/2"	2"	9/32"	3/8"	20
W6X9	1/2" DIA. X 3 1/4"	10"	5"	1"	3/4"	3 1/2"	1"	9/32"	10"	5"	1"	3/4"	3 1/2"	9/32"	28 GAUGE	1/2" DIA. X 1 3/4"	4"	3 1/2"	4"	3/4"	1"	1/2"	2"	9/32"	3/8"	32
W6X12	5/8" DIA. X 4"	11"	5"	1 1/4"	7/8"	3 1/4"	1 1/4"	11/32"	11"	5"	1 1/4"	7/8"	3 1/4"	11/32"	28 GAUGE	5/8" DIA. X 2"	4"	4"	4 1/2"	3/4"	1 1/8"	5/8"	2 1/4"	11/32"	3/8"	39
W6X16	5/8" DIA. X 4 1/2"	12"	6"	1 1/4"	7/8"	4 1/4"	1 1/2"	11/32"	12"	6"	1 1/4"	7/8"	4 1/4"	11/32"	28 GAUGE	5/8" DIA. X 2 1/4"	4"	4"	4 1/2"	3/4"	1 1/8"	5/8"	2 1/4"	11/32"	1/2"	47
W8X18	5/8" DIA. X 4 1/2"	13 1/2"	6 1/2"	1 1/4"	7/8"	4 3/4"	1 1/2"	11/32"	13 1/2"	6 1/2"	1 1/4"	7/8"	4 3/4"	11/32"	28 GAUGE	5/8" DIA. X 2 1/4"	5 1/4"	4"	4 1/2"	1"	1 1/8"	5/8"	2 1/4"	11/32"	1/2"	70
W8X21	3/4" DIA. X 4 1/2"	14"	7"	1 1/2"	1"	5"	1 1/2"	13/32"	14"	7"	1 1/2"	1"	5"	13/32"	28 GAUGE	3/4" DIA. X 2 1/2"	5 1/4"	6"	7"	1"	1 3/4"	3/4"	3 1/2"	13/32"	1/2"	73
W10X22	3/4" DIA. X 4 1/2"	16"	8"	1 1/2"	1"	6"	1 1/2"	13/32"	16"	8"	1 1/2"	1"	6"	13/32"	28 GAUGE	3/4" DIA. X 2 1/2"	5 3/4"	6"	7"	1"	1 3/4"	3/4"	3 1/2"	13/32"	1/2"	119
W10X26	3/4" DIA. X 5 1/2"	16 1/2"	8"	1 1/2"	1"	6"	1 3/4"	13/32"	16 1/2"	8"	1 1/2"	1"	6"	13/32"	28 GAUGE	3/4" DIA. X 2 3/4"	5 3/4"	6"	7"	1"	1 3/4"	3/4"	3 1/2"	13/32"	5/8"	140
W12X26	3/4" DIA. X 5 1/2"	18 1/2"	9"	1 1/2"	1"	7"	1 3/4"	13/32"	18 1/2"	9"	1 1/2"	1"	7"	13/32"	28 GAUGE	3/4" DIA. X 2 3/4"	6 1/2"	6"	7"	1"	1 3/4"	3/4"	3 1/2"	13/32"	5/8"	176
W14X30	1" DIA. X 6"	22"	9"	2"	1 1/2"	6"	2"	17/32"	22"	9"	2"	1 1/2"	6"	17/32"	28 GAUGE	1" DIA. X 3"	6 3/4"	7"	8"	1 1/4"	2"	1"	4"	17/32"	5/8"	205
W16X31	1" DIA. X 6"	24"	9"	2"	1 1/2"	6"	2"	17/32"	24"	9"	2"	1 1/2"	6"	17/32"	28 GAUGE	1" DIA. X 3"	5 1/2"	7"	8"	1 1/4"	2"	1"	4"	17/32"	3/4"	223
W18X35	1" DIA. X 6"	25"	9"	2"	1 1/2"	6"	2"	17/32"	25"	9"	2"	1 1/2"	6"	17/32"	28 GAUGE	1" DIA. X 3"	6"	7"	8"	1 1/4"	2"	1"	4"	17/32"	3/4"	243
W18X40	1" DIA. X 6 1/2"	26"	9"	2"	1 1/2"	6"	2 1/4"	17/32"	26"	9"	2"	1 1/2"	6"	17/32"	28 GAUGE	1" DIA. X 3 1/2"	6"	7"	8"	1 1/4"	2"	1"	4"	17/32"	7/8"	278
W21X44	1" DIA. X 7"	29"	9"	2"	1 1/2"	6"	2 1/2"	17/32"	29"	9"	2"	1 1/2"	6"	17/32"	28 GAUGE	1" DIA. X 3 1/2"	6 1/2"	7"	8"	1 1/4"	2"	1"	4"	17/32"	7/8"	310



FOOTING DIAMETER	REINFORCEMENT	SPIRAL BAR
1'-6"	8 # 6 BARS	#3 BAR, 6" PITCH
2'	8 # 7 BARS	#3 BAR, 6" PITCH
2'-6"	8 # 9 BARS	#3 BAR, 6" PITCH
3'	8 # 11 BARS	#3 BAR, 6" PITCH
3'-6"	8 # 12 BARS	#3 BAR, 6" PITCH
4'	8 # 14 BARS	#3 BAR, 6" PITCH

* FOUNDATION DIMENSIONS ARE SHOWN IN PLANS

STATE OF NORTH CAROLINA
DEPT. OF TRANSPORTATION
DIVISION OF HIGHWAYS
RALEIGH, N.C.

ENGLISH DETAIL DRAWING FOR
GROUND MOUNTED SIGN SUPPORTS

SHEET 2 OF 3
903D10

**REVISED SIGNING
ROADWAY STANDARD DRAWING**

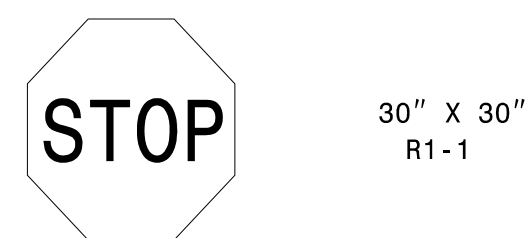
3/29/2017 C:\p01\Caro\RAle\raleigh\38527.dwg Wetherill T02 U-5796\NCDD01\Traffic\Signing\CA00\Signing Layout Plans\PEF Engseed 11-23-15.dgn User: mthigpen

APPROVED: _____

DATE: _____



401 QUANTITY REQ'D 4



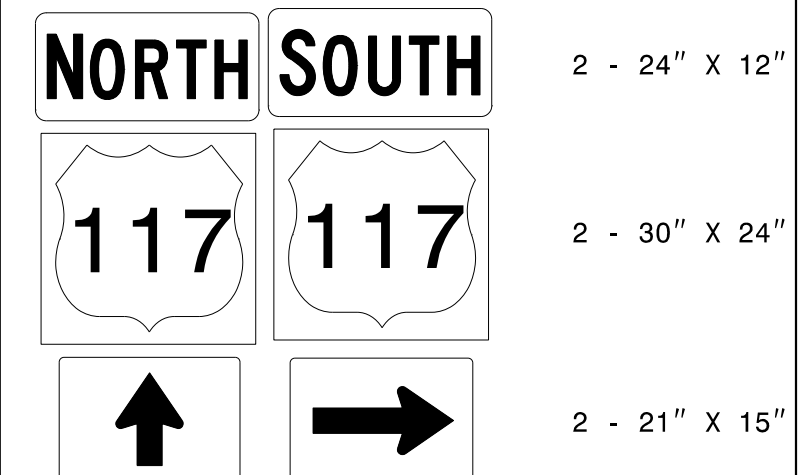
ONE "U" POST PER SIGN

406 QUANTITY REQ'D 4

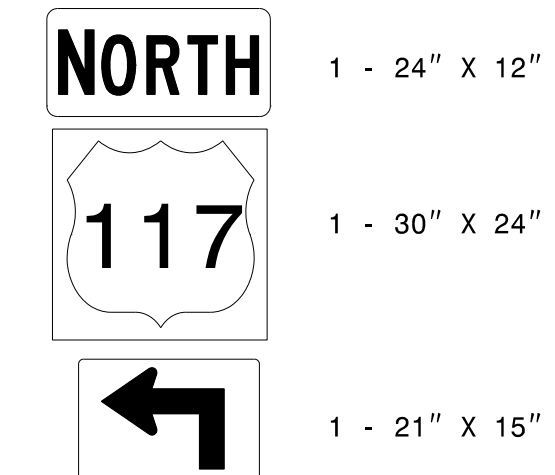


ONE "U" POST PER SIGN

501



506

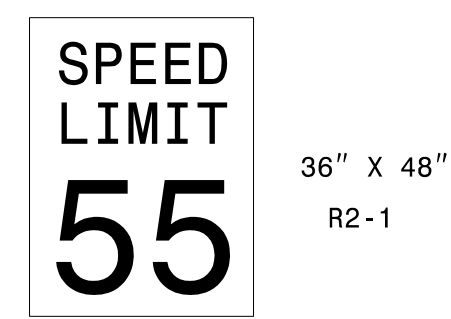


402 QUANTITY REQ'D 2



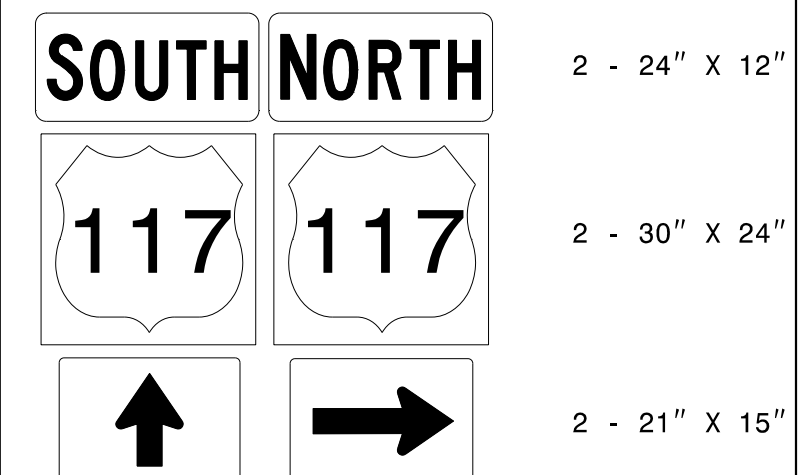
TWO "U" POSTS PER SIGN

407 QUANTITY REQ'D 4

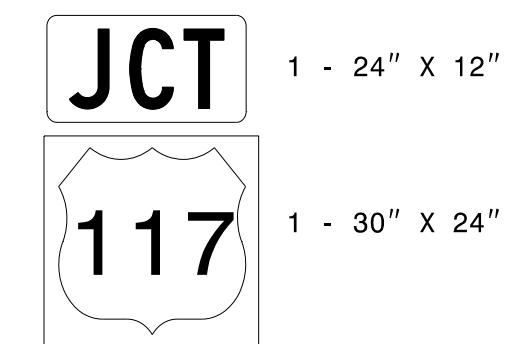


ONE "U" POST PER SIGN

502



507

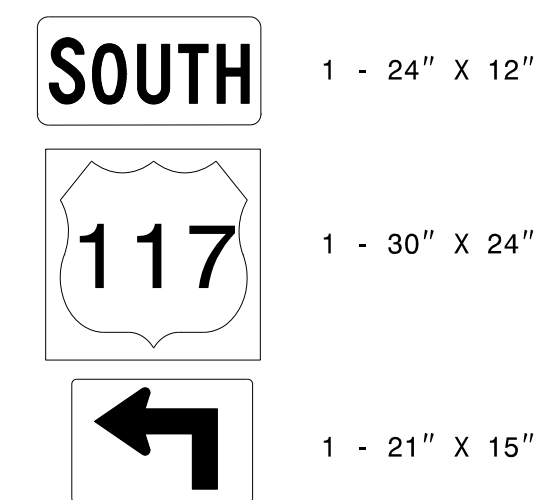


403 QUANTITY REQ'D 2

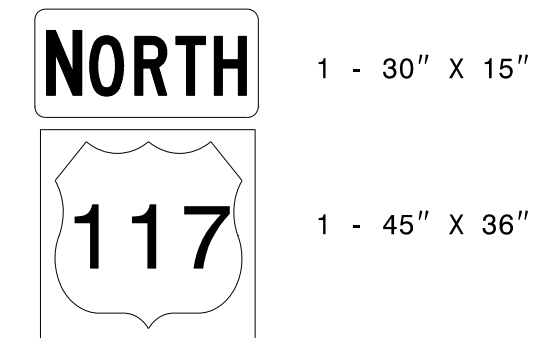


TWO "U" POSTS PER SIGN

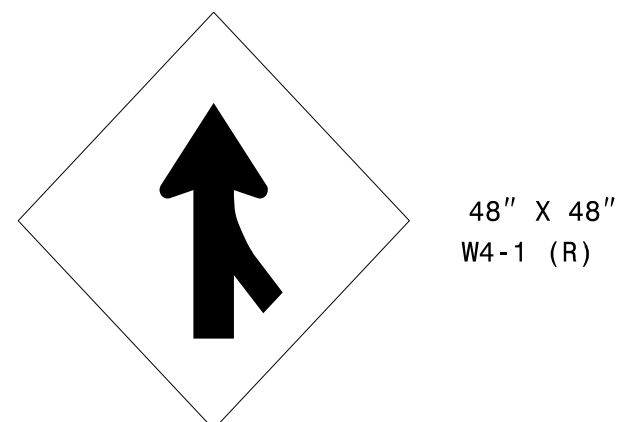
503



508

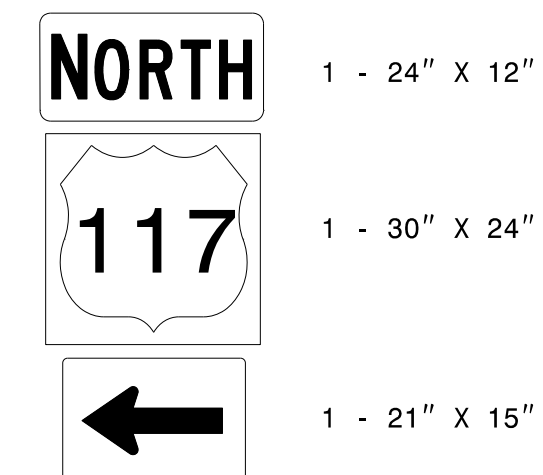


404 QUANTITY REQ'D 2

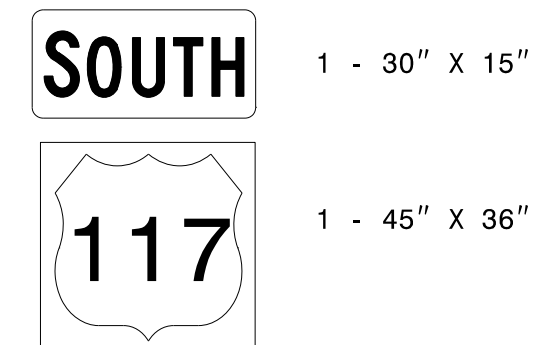


TWO "U" POSTS PER SIGN

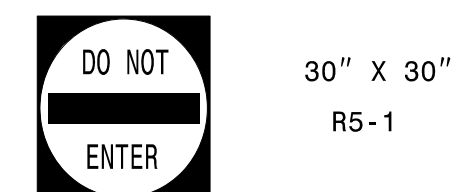
504



509

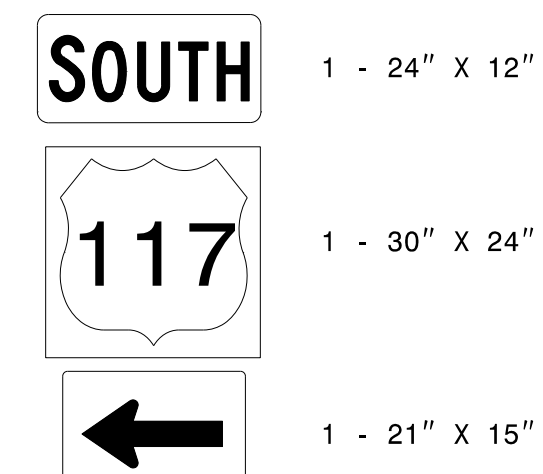


405 QUANTITY REQ'D 4



ONE "U" POST PER SIGN

505



TYPE "E" & "F" SIGNS

APPROVED: _____

DATE: _____



SIGN NUMBER: 101, 106	BACKG COLOR: Green	DESIGN BY: M. Thigpen	CHECKED BY: J. Lewis	Nov 17, 2016
TYPE: A	COPY COLOR: White	PROJECT ID: U-5796		DIV: 04
QUANTITY: 2				
SIGN WIDTH: 14'-0"				
HEIGHT: 7'-0"				
TOTAL AREA: 98.0 Sq.Ft.				
BORDER TYPE: FLUSH				
RECESS: 0"				
WIDTH: 2"				
RADII: 11"				
NO. Z BARS: 2	MAT'L:			
LENGTH: 160.0	0.125" (3.2 mm) ALUMINUM			

USE NOTES:

- Legend and border(except those that are colored black) shall be direct applied Grade B sheeting.
- Background shall be Grade C reflective sheeting.
- Shields; A, B, and C type arrows shall be on 0.032" (0.8mm) aluminum and demountable.

Panel Style: guide_exp_advance_intermediate.ssi
M.U.T.C.D.: 2009 Edition Spacing Factor is 1 unless specified otherwise

LETTER POSITIONS

Letter spacings are to start of next letter

Series/Size	Text Length
EM 2000	134.9
EM 2000	71.4
E 2000	105.3

FILENAME: Guidesign_English NORTH CAROLINA D.O.T. SIGN DETAIL

SIGN NUMBER: 103, 104	BACKG COLOR: Green	DESIGN BY: M. Thigpen	CHECKED BY: J. Lewis	Nov 17, 2016
TYPE: A	COPY COLOR: White	PROJECT ID: U-5796		DIV: 04
QUANTITY: 2				
SIGN WIDTH: 14'-0"				
HEIGHT: 8'-0"				
TOTAL AREA: 112.0 Sq.Ft.				
BORDER TYPE: FLUSH				
RECESS: 0"				
WIDTH: 2"				
RADII: 12"				
NO. Z BARS: 3	MAT'L:			
LENGTH: 160.0	0.125" (3.2 mm) ALUMINUM			

USE NOTES:

- Legend and border(except those that are colored black) shall be direct applied Grade B sheeting.
- Background shall be Grade C reflective sheeting.
- Shields; A, B, and C type arrows shall be on 0.032" (0.8mm) aluminum and demountable.

Panel Style: guide_exp_advance_intermediate.ssi
M.U.T.C.D.: 2009 Edition Spacing Factor is 1 unless specified otherwise

LETTER POSITIONS

Letter spacings are to start of next letter

Series/Size	Text Length
EM 2000	134.9
EM 2000	71.4
E 2000	105.3

FILENAME: Guidesign_English NORTH CAROLINA D.O.T. SIGN DETAIL

SIGN NUMBER: 102, 105	BACKG COLOR: Green	DESIGN BY: M. THIGPEN	CHECKED BY: J. LEWIS	Oct 31, 2016
TYPE: A	COPY COLOR: White	PROJECT ID: U-5796		DIV: 04
QUANTITY: 2				
SIGN WIDTH: 12'-6"				
HEIGHT: 5'-0"				
TOTAL AREA: 62.5 Sq.Ft.				
BORDER TYPE: FLUSH				
RECESS: 0"				
WIDTH: 2"				
RADII: 8"				
NO. Z BARS: 2	MAT'L:			
LENGTH: 142.0	0.125" (3.2 mm) ALUMINUM			

USE NOTES: 1,2

- Legend and border(except those that are colored black) shall be direct applied Grade B sheeting.
- Background shall be Grade C reflective sheeting.
- Shields; A, B, and C type arrows shall be on 0.032" (0.8mm) aluminum and demountable.

Panel Style: guide_exp_supplemental.ssi
M.U.T.C.D.: 2009 Edition Spacing Factor is 1 unless specified otherwise

LETTER POSITIONS

Letter locations are panel edge to lower left corner

Series/Size	Text Length
EM 2000	134.7
EM 2000	95.7
E 2000	67

FILENAME: Guidesign_English NORTH CAROLINA D.O.T. SIGN DETAIL

SIGN NUMBER: 107	BACKG COLOR: Green	DESIGN BY: M. Thigpen	CHECKED BY: J. Lewis	Nov 15, 2016
TYPE: B	COPY COLOR: White	PROJECT ID: R-5719		DIV: 04
QUANTITY: 1				
SIGN WIDTH: 9'-6"				
HEIGHT: 2'-6"				
TOTAL AREA: 23.8 Sq.Ft.				
BORDER TYPE: FLUSH				
RECESS: 0"				
WIDTH: 1.75"				
RADII: 4"				
NO. Z BARS: 2	MAT'L:			
LENGTH: 106.0	0.125" (3.2 mm) ALUMINUM			

USE NOTES: 1,2

- Legend and border(except those that are colored black) shall be direct applied Grade C sheeting.
- Background shall be Grade C reflective sheeting.

Panel Style: guide_exp_distance.ssi
M.U.T.C.D.: 2009 Edition Spacing Factor is 1 unless specified otherwise

LETTER POSITIONS

Letter locations are panel edge to lower left corner

Series/Size	Text Length
EM 2000	76.6
EM 2000	6.5

FILENAME: Guidesign_English_8-2-13 NORTH CAROLINA D.O.T. SIGN DETAIL

C:\Users\mthigpen\OneDrive\Documents\Projects\2016\02_U-5796\NCDD01\Traffic\Signing\CA00\Signing Layout Plans\U-5796_sgn_sht04.dgn
 11/17/2016 10:25:27 AM Wetherill, T02_U-5796\NCDD01\Traffic\Signing\CA00\Signing Layout Plans\U-5796_sgn_sht04.dgn
 User: mthigpen

APPROVED: _____

DATE: _____



SIGN NUMBER: 301	BACKG COLOR: Green	DESIGN BY: M. THIGPEN	CHECKED BY: J. LEWIS	Jan 21, 2016
TYPE: D	COPY COLOR: White	PROJECT ID: U-5796		DIV: 04
QUANTITY: 1	SYMBOL X Y WID HT			
SIGN WIDTH: 4'-6"	AR_Type D 7.1 6 6 9			
HEIGHT: 1'-6"				
TOTAL AREA: 6.8 Sq.Ft.				
BORDER TYPE: FLUSH				
RECESS: 0"				
WIDTH: 0.75"				
RADII: 1.5"				
NO. Z BARS:	MAT'L:			
LENGTH:	0.125" (3.2 mm) ALUMINUM			

USE NOTES: 1,2,3

- Legend and border(except those that are colored black) shall be direct applied Grade C sheeting.
- Background shall be Grade C reflective sheeting.
- Shields; A, B, and C type arrows shall be on 0.032" (0.8mm) aluminum and demountable.

BORDER R=1.5" TH=0.75"

Panel Style: guide_con_destination.ssi
M.U.T.C.D.: 2009 Edition

Spacing Factor is 1 unless specified otherwise

LETTER POSITIONS

Letter spacings are to start of next letter

Series/Size	Text Length
D 2000	24.8
22.1	5.2
4.5	4.8
1.9	3.9
4.5	7.1

FILENAME: Guidsign_English

NORTH CAROLINA D.O.T. SIGN DETAIL

SIGN NUMBER: 303	BACKG COLOR: Green	DESIGN BY: M. THIGPEN	CHECKED BY: J. LEWIS	Jan 21, 2016
TYPE: D	COPY COLOR: White	PROJECT ID: U-5796		DIV: 04
QUANTITY: 1	SYMBOL X Y WID HT			
SIGN WIDTH: 5'-6"	AR_Type D 8 6 6 9			
HEIGHT: 1'-6"				
TOTAL AREA: 8.3 Sq.Ft.				
BORDER TYPE: FLUSH				
RECESS: 0"				
WIDTH: 0.75"				
RADII: 1.5"				
NO. Z BARS:	MAT'L:			
LENGTH:	0.125" (3.2 mm) ALUMINUM			

USE NOTES: 1,2,3

- Legend and border(except those that are colored black) shall be direct applied Grade C sheeting.
- Background shall be Grade C reflective sheeting.
- Shields; A, B, and C type arrows shall be on 0.032" (0.8mm) aluminum and demountable.

BORDER R=1.5" TH=0.75"

Panel Style: guide_con_destination.ssi
M.U.T.C.D.: 2009 Edition

Spacing Factor is 1 unless specified otherwise

LETTER POSITIONS

Letter spacings are to start of next letter

Series/Size	Text Length
D 2000	35
23	5
4.6	1.9
4.4	3.6
4.3	4.6
2.8	3.7
8	

FILENAME: Guidsign_English

NORTH CAROLINA D.O.T. SIGN DETAIL

SIGN NUMBER: 302	BACKG COLOR: Green	DESIGN BY: M. THIGPEN	CHECKED BY: J. LEWIS	Jan 21, 2016
TYPE: D	COPY COLOR: White	PROJECT ID: U-5796		DIV: 04
QUANTITY: 1	SYMBOL X Y WID HT			
SIGN WIDTH: 6'-0"	AR_Type D 5.9 6 6 9			
HEIGHT: 1'-6"				
TOTAL AREA: 9.0 Sq.Ft.				
BORDER TYPE: FLUSH				
RECESS: 0"				
WIDTH: 0.75"				
RADII: 1.5"				
NO. Z BARS:	MAT'L:			
LENGTH:	0.125" (3.2 mm) ALUMINUM			

USE NOTES: 1,2,3

- Legend and border(except those that are colored black) shall be direct applied Grade C sheeting.
- Background shall be Grade C reflective sheeting.
- Shields; A, B, and C type arrows shall be on 0.032" (0.8mm) aluminum and demountable.

BORDER R=1.5" TH=0.75"

Panel Style: guide_con_destination.ssi
M.U.T.C.D.: 2009 Edition

Spacing Factor is 1 unless specified otherwise

LETTER POSITIONS

Letter spacings are to start of next letter

Series/Size	Text Length
D 2000	45.2
20.9	5.8
4.6	4.7
4.1	2.4
6	5.5
2.2	1.7
4.7	3.5
5.9	

FILENAME: Guidsign_English

NORTH CAROLINA D.O.T. SIGN DETAIL

SIGN NUMBER: 304	BACKG COLOR: Green	DESIGN BY: M. THIGPEN	CHECKED BY: J. LEWIS	Jan 21, 2016
TYPE: D	COPY COLOR: White	PROJECT ID: U-5796		DIV: 04
QUANTITY: 1	SYMBOL X Y WID HT			
SIGN WIDTH: 4'-6"	AR_Type D 37.9 6 6 9			
HEIGHT: 1'-6"				
TOTAL AREA: 6.8 Sq.Ft.				
BORDER TYPE: FLUSH				
RECESS: 0"				
WIDTH: 0.75"				
RADII: 1.5"				
NO. Z BARS:	MAT'L:			
LENGTH:	0.125" (3.2 mm) ALUMINUM			

USE NOTES: 1,2,3

- Legend and border(except those that are colored black) shall be direct applied Grade C sheeting.
- Background shall be Grade C reflective sheeting.
- Shields; A, B, and C type arrows shall be on 0.032" (0.8mm) aluminum and demountable.

BORDER R=1.5" TH=0.75"

Panel Style: guide_con_destination.ssi
M.U.T.C.D.: 2009 Edition

Spacing Factor is 1 unless specified otherwise

LETTER POSITIONS

Letter spacings are to start of next letter

Series/Size	Text Length
D 2000	24.8
7.1	5.2
4.5	4.8
1.9	3.9
4.5	22.1

FILENAME: Guidsign_English

NORTH CAROLINA D.O.T. SIGN DETAIL

C:\Users\mthigpen\Documents\Projects\2016\02_U-5796\NCDD01\Traffic\Signing\CA00\Signing Layout Plans\U-5796_sgn_sht04.dgn
 User: mthigpen
 Date: 1/21/2016 10:52:27 AM

APPROVED: _____

DATE: _____

SEAL



SIGN NUMBER: 305	BACKG COLOR: Green	DESIGN BY: M. THIGPEN	CHECKED BY: J. LEWIS	Jan 21, 2016	
TYPE: D	COPY COLOR: White	PROJECT ID: U-5796		DIV: 04	
QUANTITY: 1	SYMBOL	X	Y	WID	HT
SIGN WIDTH: 6'-0"	AR_Type D	12.5	16.5	6	9
HEIGHT: 2'-6"	AR_Type D	57.1	4.5	6	9
TOTAL AREA: 15.0 Sq.Ft.					
BORDER TYPE: FLUSH					
RECESS: 0"					
WIDTH: 0.75"					
RADII: 2.25"					
NO. Z BARS:	MAT'L:				
LENGTH:	0.125" (3.2 mm) ALUMINUM				

USE NOTES: 1,2,3

- Legend and border(except those that are colored black) shall be direct applied Grade C sheeting.
- Background shall be Grade C reflective sheeting.
- Shields; A, B, and C type arrows shall be on 0.032" (0.8mm) aluminum and demountable.

Panel Style: guide_con_destination.ssi
M.U.T.C.D.: 2009 Edition

Spacing Factor is 1 unless specified otherwise

LETTER POSITIONS

Letter spacings are to start of next letter

Series/Size	Text Length
D 2000	35
D 2000	45.2

FILENAME: Guidesign_English NORTH CAROLINA D.O.T. SIGN DETAIL

SIGN NUMBER: 307	BACKG COLOR: Green	DESIGN BY: M. Thigpen	CHECKED BY: J. Lewis	Nov 15, 2016	
TYPE: D	COPY COLOR: White	PROJECT ID: R-5719		DIV: 04	
QUANTITY: 1	SYMBOL	X	Y	WID	HT
SIGN WIDTH: 8'-0"					
HEIGHT: 2'-6"					
TOTAL AREA: 20.0 Sq.Ft.					
BORDER TYPE: FLUSH					
RECESS: 0"					
WIDTH: 1.75"					
RADII: 4"					
NO. Z BARS:	MAT'L: 0.125" (3.2 mm) ALUMINUM				
LENGTH:					

USE NOTES: 1,2

- Legend and border(except those that are colored black) shall be direct applied Grade C sheeting.
- Background shall be Grade C reflective sheeting.

Panel Style: guide_exp_distance.ssi
M.U.T.C.D.: 2009 Edition

Spacing Factor is 1 unless specified otherwise

LETTER POSITIONS

Letter locations are panel edge to lower left corner

Series/Size	Text Length
EM 2000	61.1
EM 2000	6.5

FILENAME: Guidesign_English_8-2-13 NORTH CAROLINA D.O.T. SIGN DETAIL

SIGN NUMBER: 306	BACKG COLOR: Green	DESIGN BY: M. THIGPEN	CHECKED BY: J. LEWIS	Jan 21, 2016	
TYPE: D	COPY COLOR: White	PROJECT ID: U-5796		DIV: 04	
QUANTITY: 1	SYMBOL	X	Y	WID	HT
SIGN WIDTH: 6'-0"	AR_Type D	7.4	16.5	6	9
HEIGHT: 2'-6"	AR_Type D	52	4.5	6	9
TOTAL AREA: 15.0 Sq.Ft.					
BORDER TYPE: FLUSH					
RECESS: 0"					
WIDTH: 0.75"					
RADII: 2.25"					
NO. Z BARS:	MAT'L:				
LENGTH:	0.125" (3.2 mm) ALUMINUM				

USE NOTES: 1,2,3

- Legend and border(except those that are colored black) shall be direct applied Grade C sheeting.
- Background shall be Grade C reflective sheeting.
- Shields; A, B, and C type arrows shall be on 0.032" (0.8mm) aluminum and demountable.

Panel Style: guide_con_destination.ssi
M.U.T.C.D.: 2009 Edition

Spacing Factor is 1 unless specified otherwise

LETTER POSITIONS

Letter spacings are to start of next letter

Series/Size	Text Length
D 2000	45.2
D 2000	35

FILENAME: Guidesign_English NORTH CAROLINA D.O.T. SIGN DETAIL

SIGN NUMBER: 201, 202	BACKG COLOR: Green	DESIGN BY: M. Thigpen	CHECKED BY: J. Lewis	Jan 21, 2016	
TYPE: B	COPY COLOR: White	PROJECT ID: U-5796		DIV: 04	
QUANTITY: 2	SYMBOL	X	Y	WID	HT
SIGN WIDTH: 4'-0"	AR_Type A	14.7	7.4	15	23.6
HEIGHT: 4'-6"					
TOTAL AREA: 18.0 Sq.Ft.					
BORDER TYPE: FLUSH					
RECESS: 0"					
WIDTH: 1.5"					
RADII: 8"					
NO. Z BARS:	MAT'L: 0.125" (3.2 mm) ALUMINUM				
LENGTH: 40.0					

USE NOTES: 1,2,3

- Legend and border(except those that are colored black) shall be direct applied Grade C sheeting.
- Background shall be Grade C reflective sheeting.
- Shields; A, B, and C type arrows shall be on 0.032" (0.8mm) aluminum and demountable.

Panel Style: guide_exp_gore.ssi
M.U.T.C.D.: 2009 Edition

Spacing Factor is 1 unless specified otherwise

LETTER POSITIONS

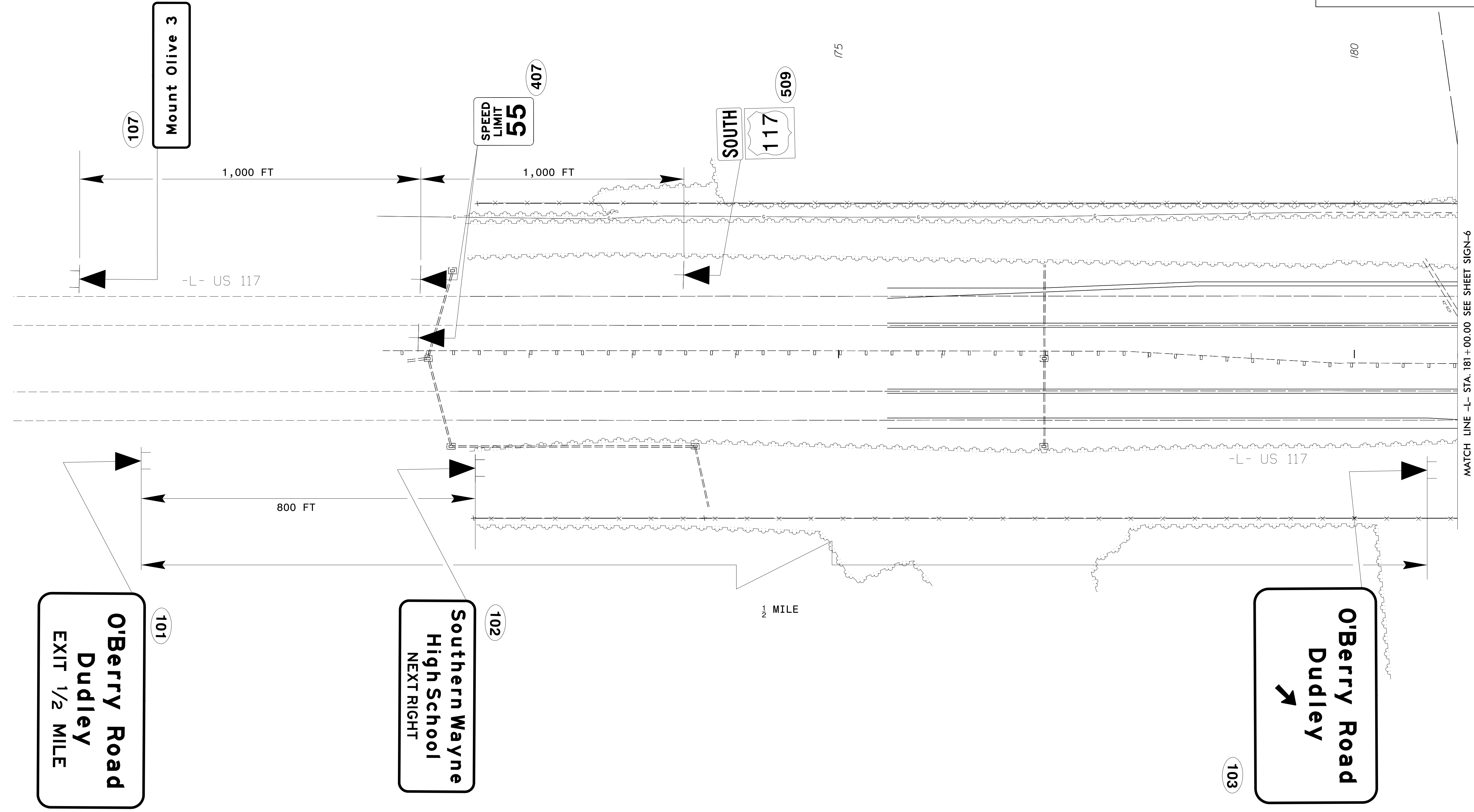
Letter spacings are to start of next letter

Series/Size	Text Length
EM 2000	30.8

FILENAME: Guidesign_English NORTH CAROLINA D.O.T. SIGN DETAIL

C:\Users\mthigpen\Documents\Projects\2016\02_U-5796\NCDD01\Traffic\Signing\CA001\Signing\Layout Plans\U-5796_sign_sht04.dgn
 2/2/2016 10:52:27 AM Wetherill, T02_U-5796\NCDD01\Traffic\Signing\CA001\Signing\Layout Plans\U-5796_sign_sht04.dgn
 User: mthigpen

NAD 83/NSRS 2007



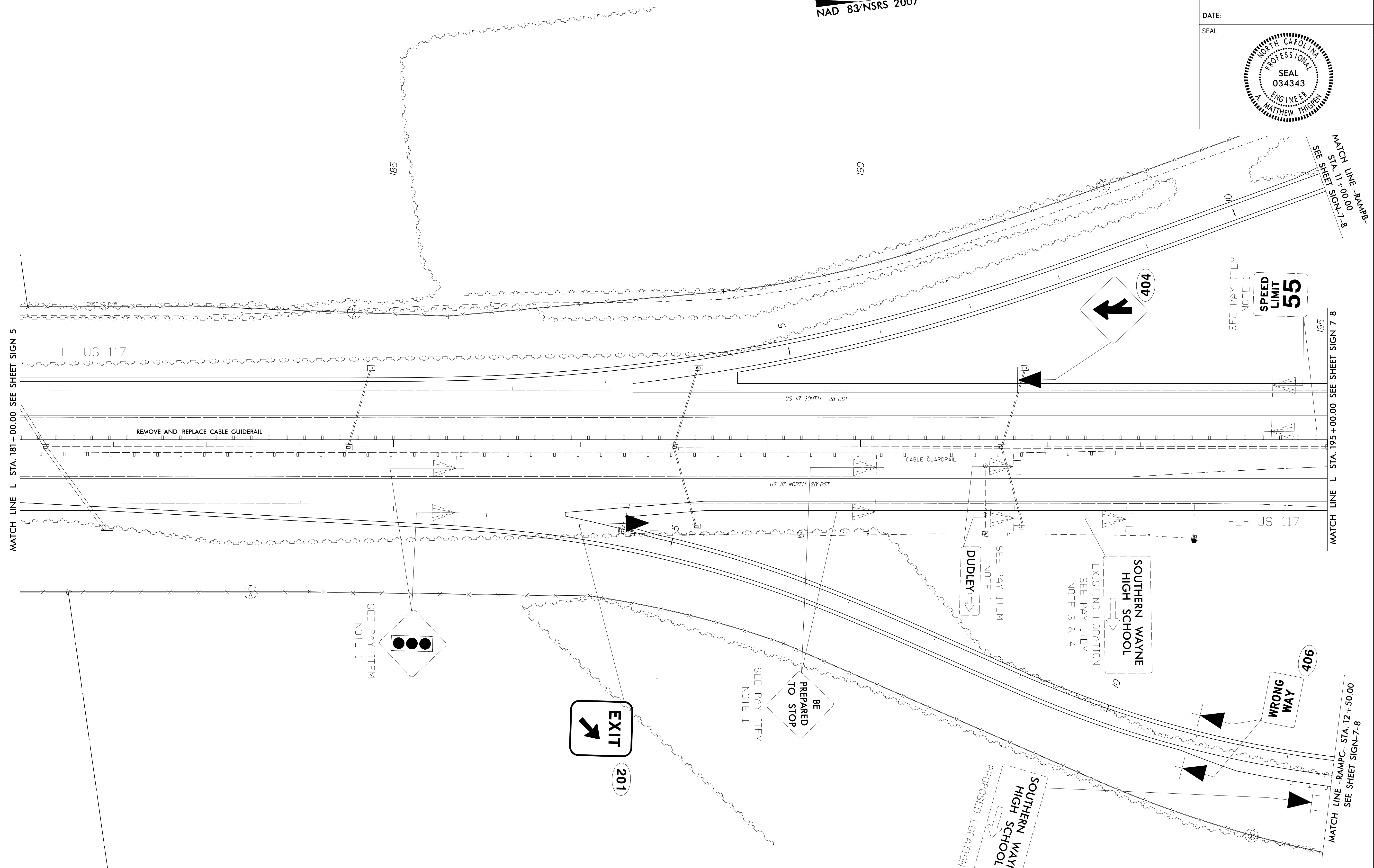
EXISTING AND PROPOSED SIGNS

2/21/2017 11:55:30 AM C:\Users\mthigpen\Documents\Projects\U-5796\Traffic\Signing\CADD\Signing_Layout\Plans\U-5796_sign_sht05.dgn
 User: mthigpen

PROJECT REFERENCE NO. U-5796	SHEET NO. SIGN-6
APPROVED: _____	
DATE: _____	
SEAL	

SEAL
034343
ENGINEER
MATTHEW THIGPEN

NAD 83/NSRS 2007

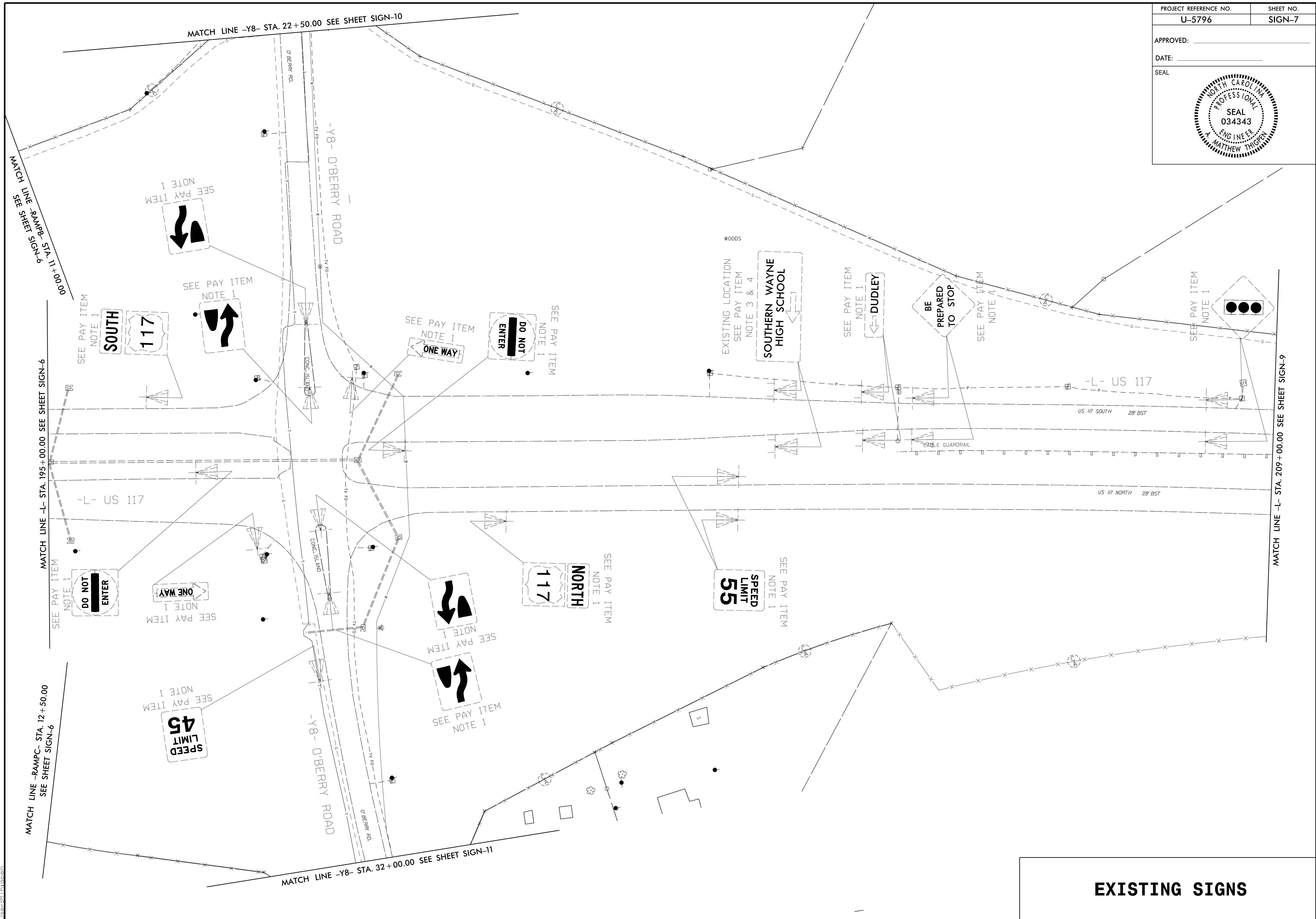


EXISTING AND PROPOSED SIGNS

2/21/2017
 C:\Users\mthigpen\Documents\Projects\U-5796\Traffic\Signing\CA001\Traffic\Signing\Layout\Plans\U-5796_sgn_sht06.dgn
 User: mthigpen

PROJECT REFERENCE NO. U-5796	SHEET NO. SIGN-7
APPROVED: _____	
DATE: _____	
SEAL	

SEAL
034343
ENGINEER
MATTHEW THIGPEN

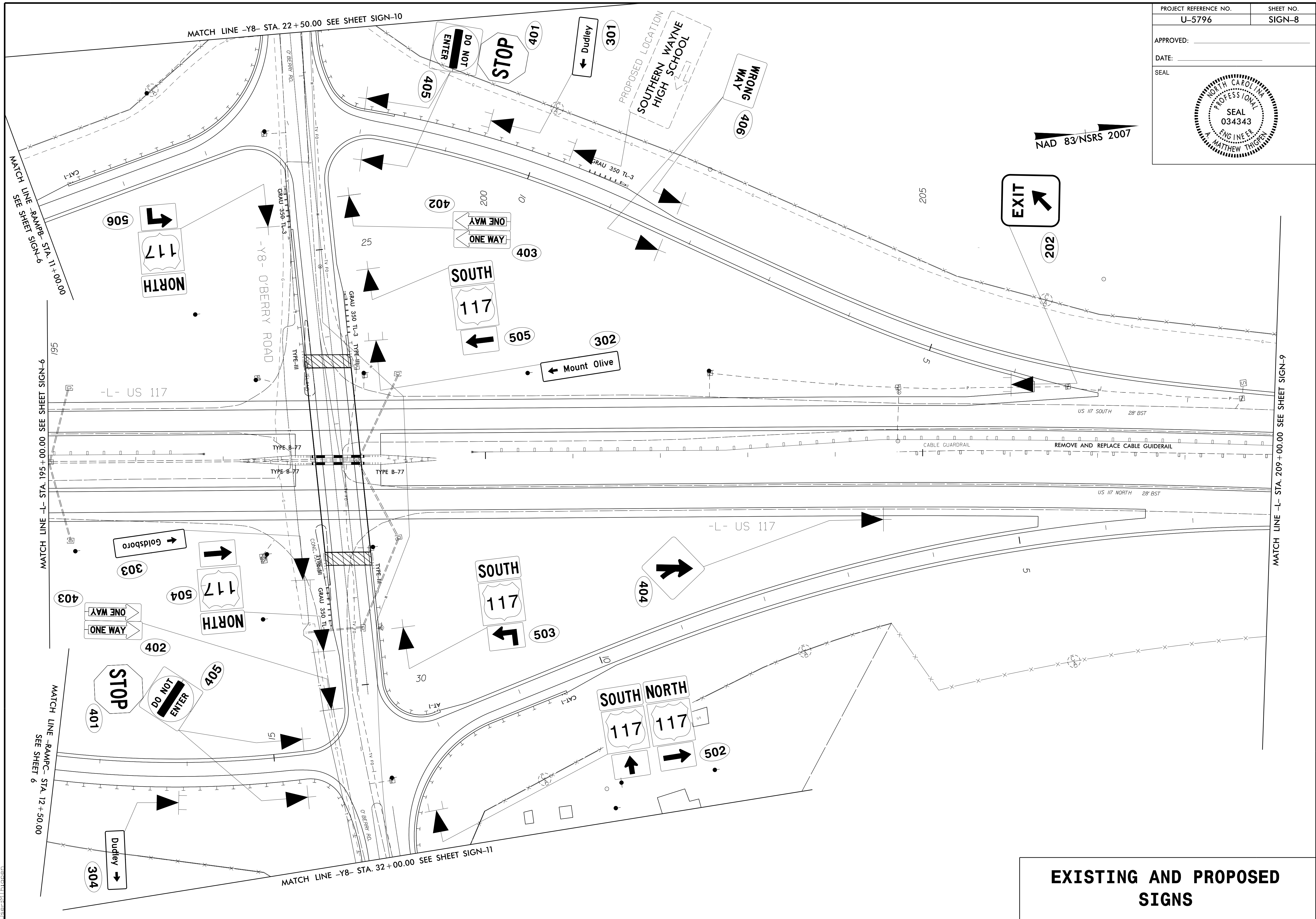


2/21/2017
 C:\Users\Walter\Documents\Projects\2017\02_U-5796\NCDD01\Traffic\Signing\CADD\Signing_Layout\Plans\U-5796_s1gn_sht07.dgn
 User: WThigpen

PROJECT REFERENCE NO. U-5796	SHEET NO. SIGN-8
APPROVED: _____	
DATE: _____	
SEAL	

SEAL
034343
ENGINEER
MATTHEW THIGPEN

NAD 83/NSRS 2007

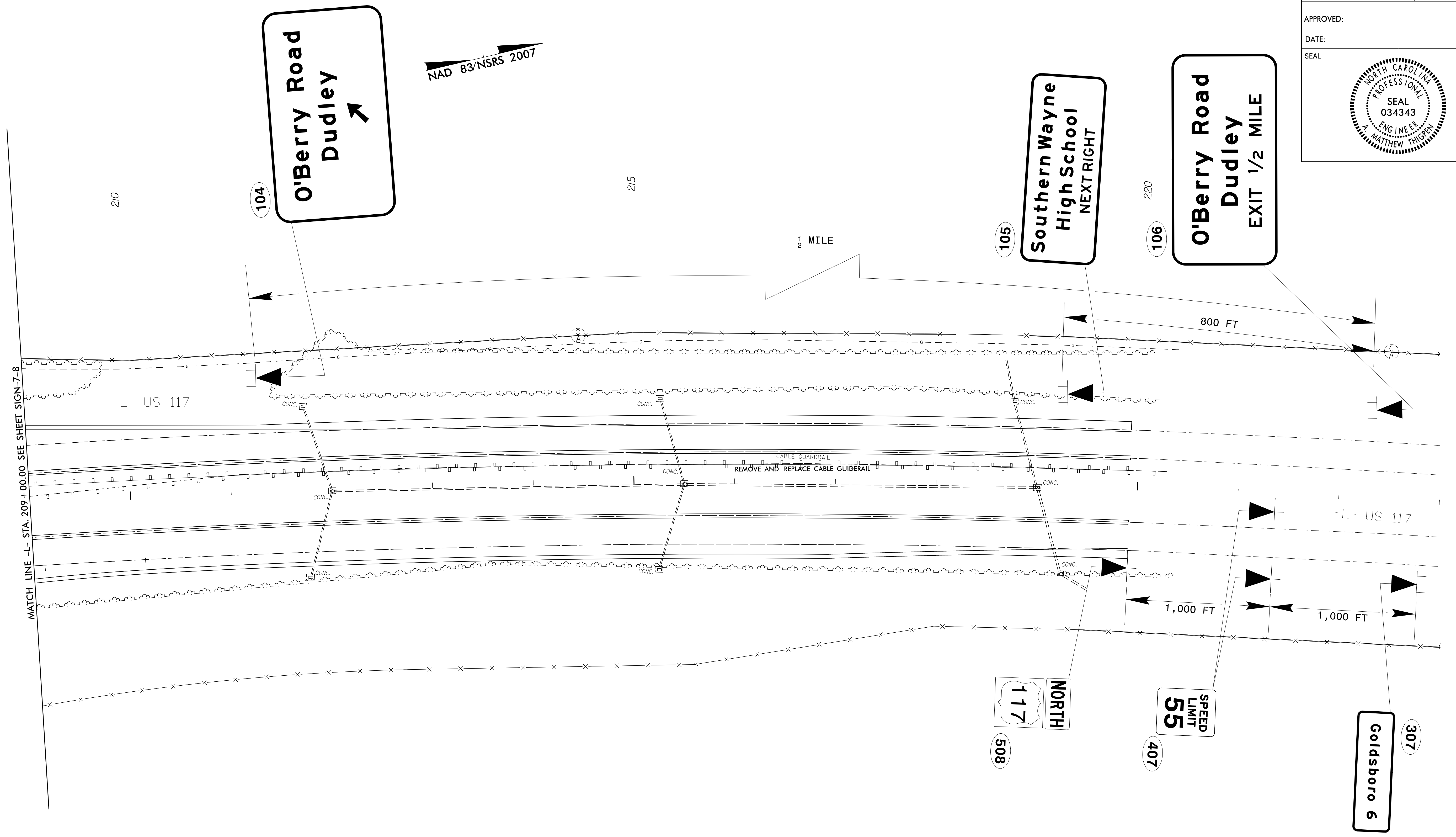


EXISTING AND PROPOSED SIGNS

2/21/2017
 C:\Users\raleigh\38527.02 Wetherill.T02.U-5796.NC001\Traffic\Signing\CADD\Signing Layout Plans\U-5796.sign_sht08.dgn
 User: raleigh



NAD 83/NSRS 2007



EXISTING AND PROPOSED SIGNS

2/21/2017
 C:\Users\mthigpen\Documents\Projects\U-5796\Signing\Layout Plans\U-5796_Sign_sht09.dgn
 User: mthigpen

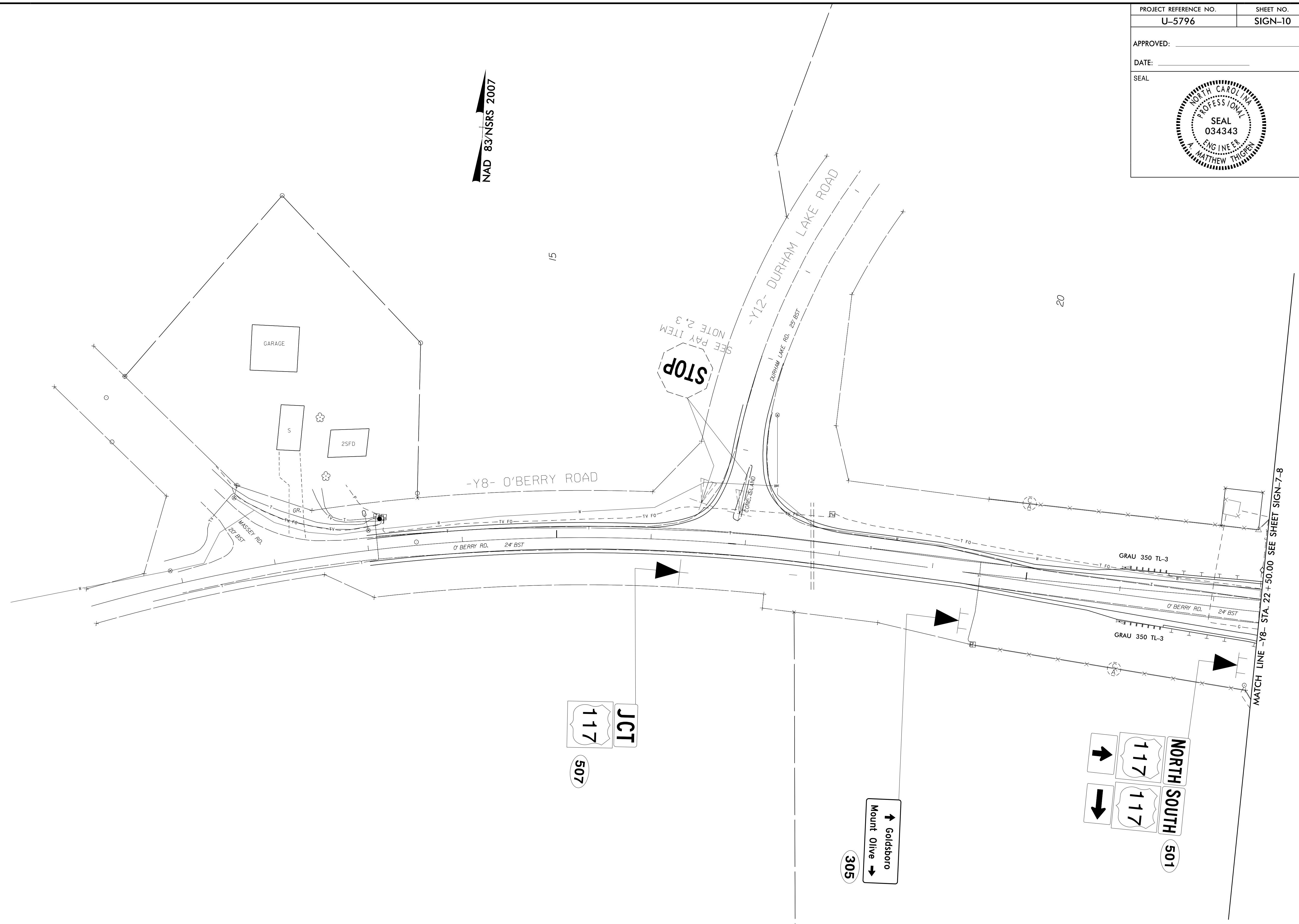
APPROVED: _____

DATE: _____

SEAL



NAD 83/NSRS 2007

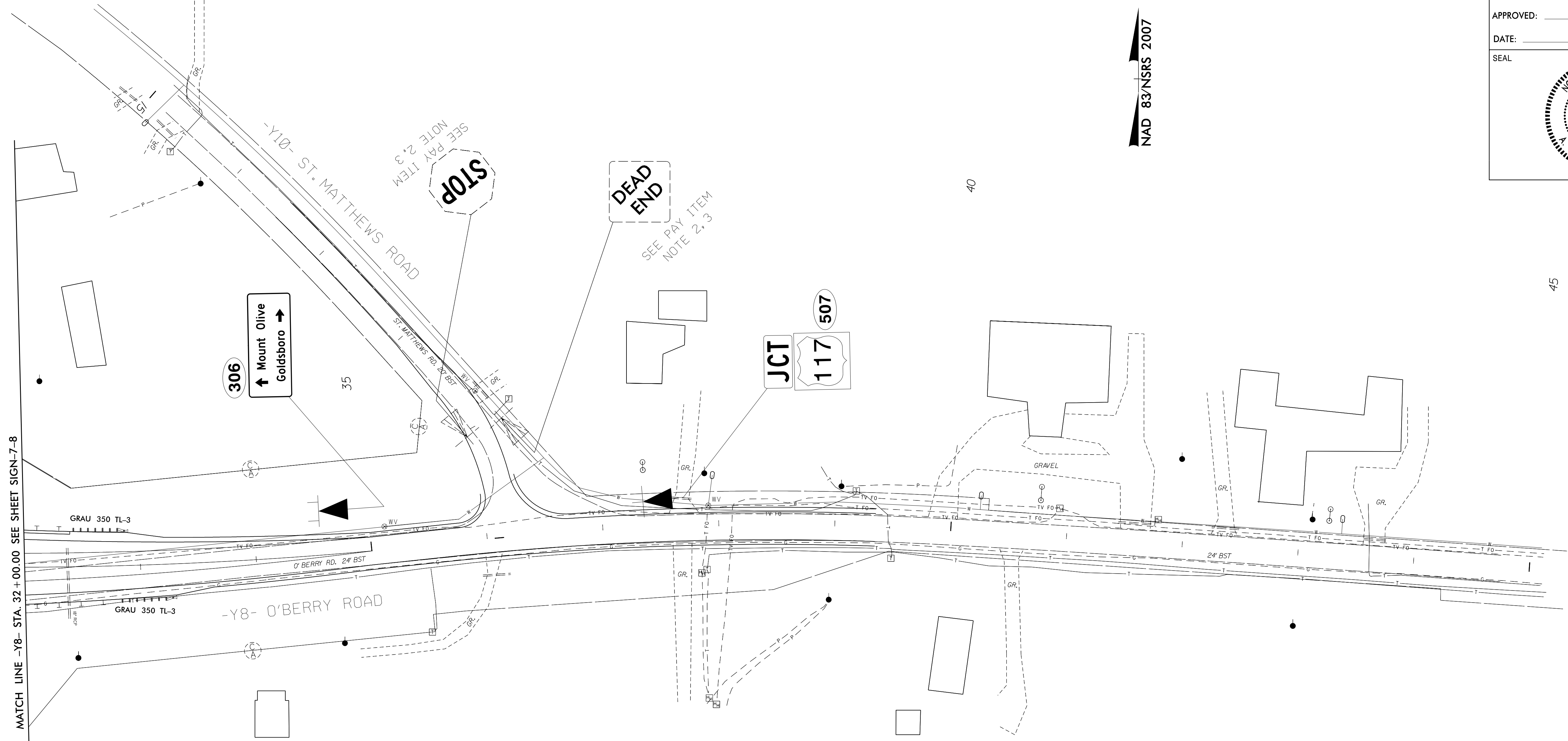


**EXISTING AND PROPOSED
SIGNS**

2/21/2017
 C:\Users\mthigpen\Documents\Projects\U-5796\Drawings\Signing\CADD\Signing_Layout_Plans\U-5796_sgn_sht10.dgn
 User: mthigpen



NAD 83/NSRS 2007



45

**EXISTING AND PROPOSED
SIGNS**

2/2/2017
 C:\Users\Wetherill\OneDrive\Documents\Projects\U-5796\Signing\Layout Plans\U-5796-sign-sh11.dgn
 User: Wetherill