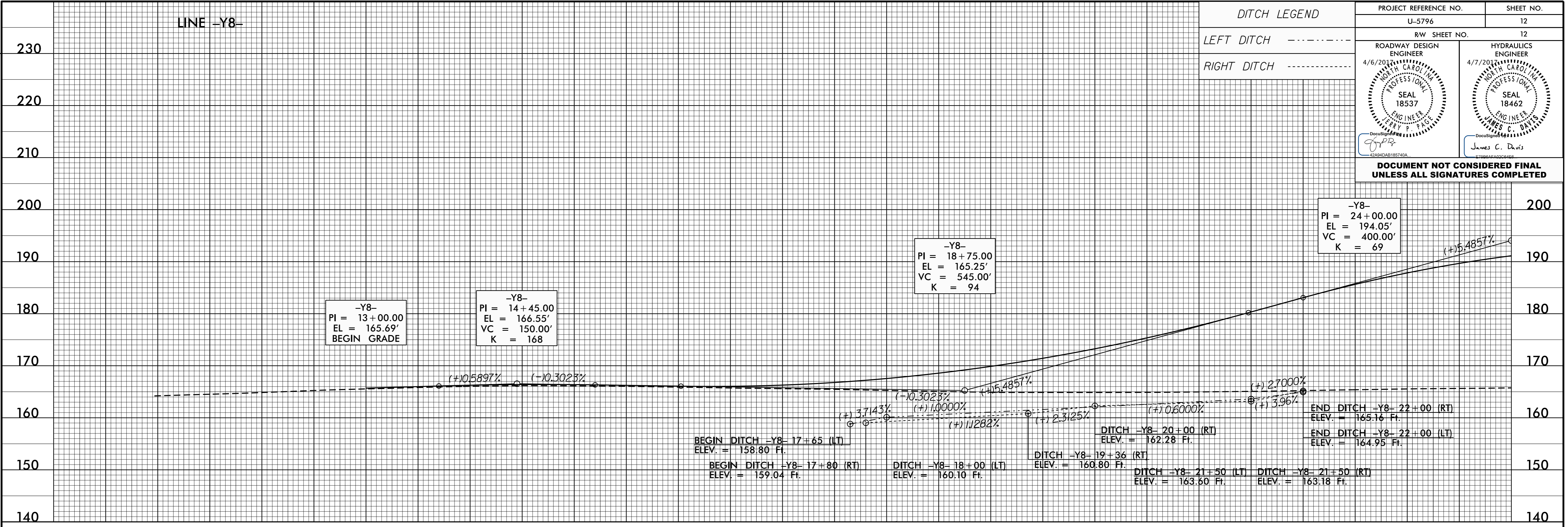


DITCH LEGEND

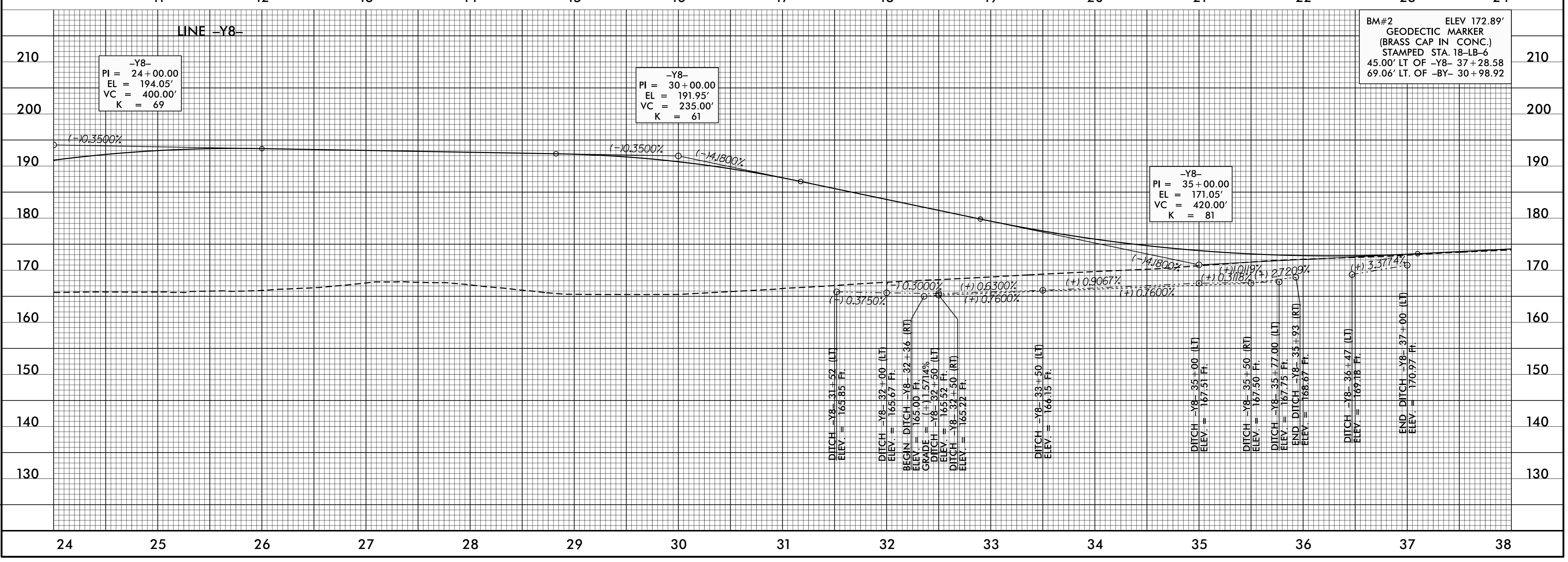
LEFT DITCH - - - - -
RIGHT DITCH - - - - -

PROJECT REFERENCE NO. U-5796	SHEET NO. 12
RAW SHEET NO. 12	
ROADWAY DESIGN ENGINEER 4/6/2017 SEAL 18537 JERRY PAGE	HYDRAULICS ENGINEER 4/7/2017 SEAL 18462 JAMES C. DAVIS

DOCUMENT NOT CONSIDERED FINAL
UNLESS ALL SIGNATURES COMPLETED



REVISIONS



BM#2 ELEV 172.89'
 GEODETIC MARKER
 (BRASS CAP IN CONC.)
 STAMPED STA. 18-LB-6
 45.00' LT. OF -Y8- 37+28.58
 69.06' LT. OF -BY- 30+98.92