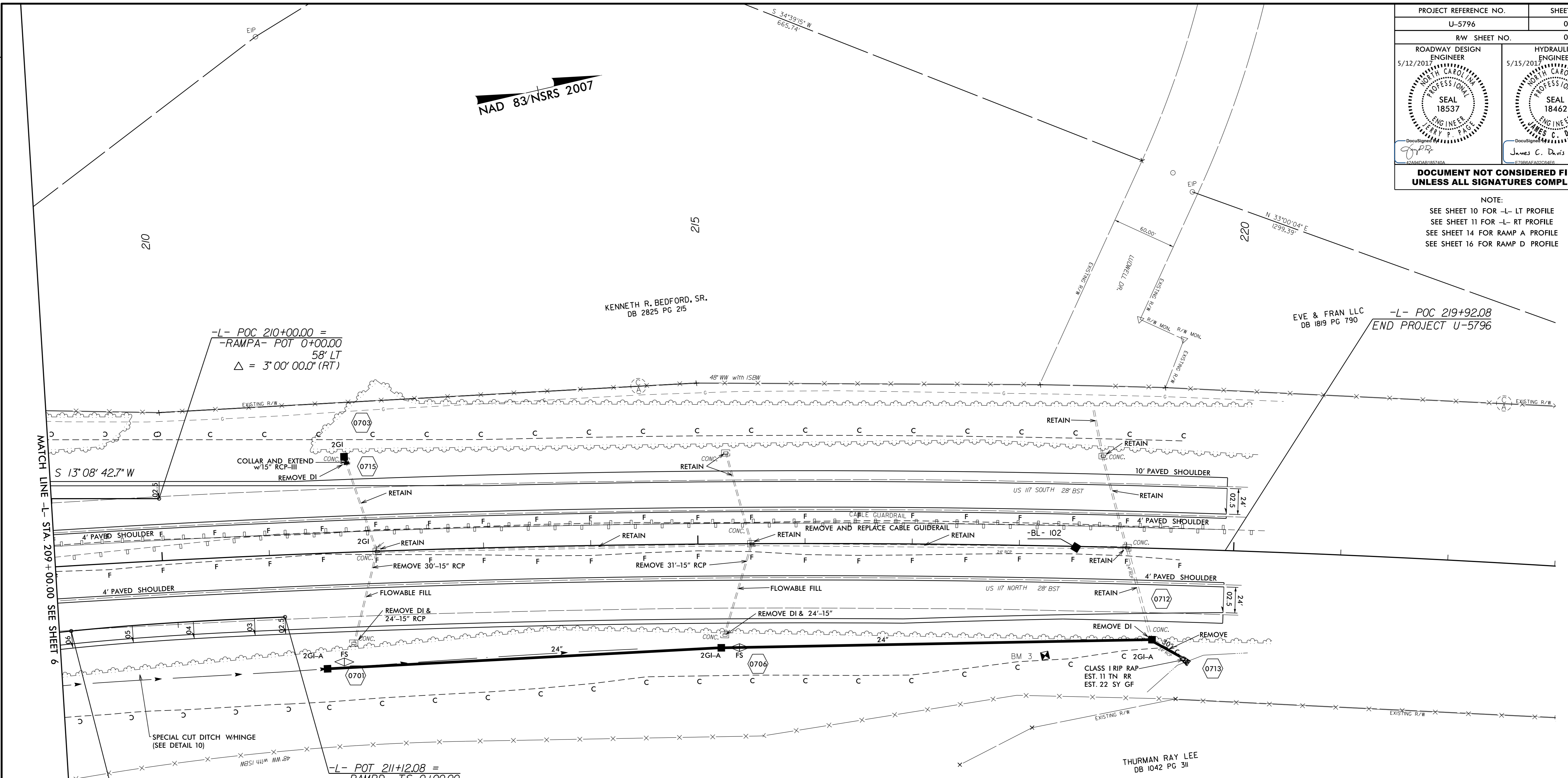


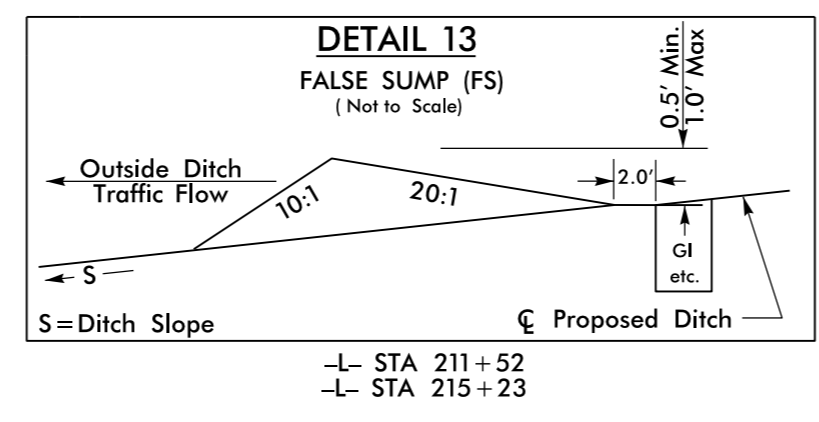
PROJECT REFERENCE NO.	SHEET NO.
U-5796	07
R/W SHEET NO.	07
ROADWAY DESIGN ENGINEER 5/12/2017 SEAL 18537 JERRY P. PAGE	HYDRAULICS ENGINEER 5/15/2017 SEAL 18462 JAMES C. DAVIS
DOCUMENT NOT CONSIDERED FINAL UNLESS ALL SIGNATURES COMPLETED	

NOTE:
SEE SHEET 10 FOR -L- LT PROFILE
SEE SHEET 11 FOR -L- RT PROFILE
SEE SHEET 14 FOR RAMP A PROFILE
SEE SHEET 16 FOR RAMP D PROFILE



MATCH LINE -L- STA. 209+00.00 SEE SHEET 6

NAD 83/NSRS 2007



RAMPD

PI Sta 5+32.17	PIs Sta 1+23.41
$\Delta = 18' 51'' 35.1''$ (LT)	$\Theta_s = 0' 30'' 08.9''$
$D = 2' 51'' 53.2''$	$\Theta_s = 2' 51'' 53.5''$
$L = 658.33'$	$L_s = 200.00'$
$T = 332.17'$	$LT = 123.41'$
$R = 2,000.00'$	$ST = 76.64'$

-L-

PI Sta 214+73.47
 $\Delta = 8' 58'' 00.0''$ (RT)
 $D = 0' 30'' 00.0''$
 $L = 1,793.33'$
 $T = 898.50'$
 $R = 11,459.16'$

12-MAY-2017 11:35
 R:\PROJECTS\U-5796_dtdc4_psh07.dgn
 \$\$\$USERNAME\$\$\$

REVISIONS

HP4500