

SURVEY CONTROL SHEET U-5796

PROJECT REFERENCE NO. U-5796	SHEET NO. 1C-1
Location and Surveys	

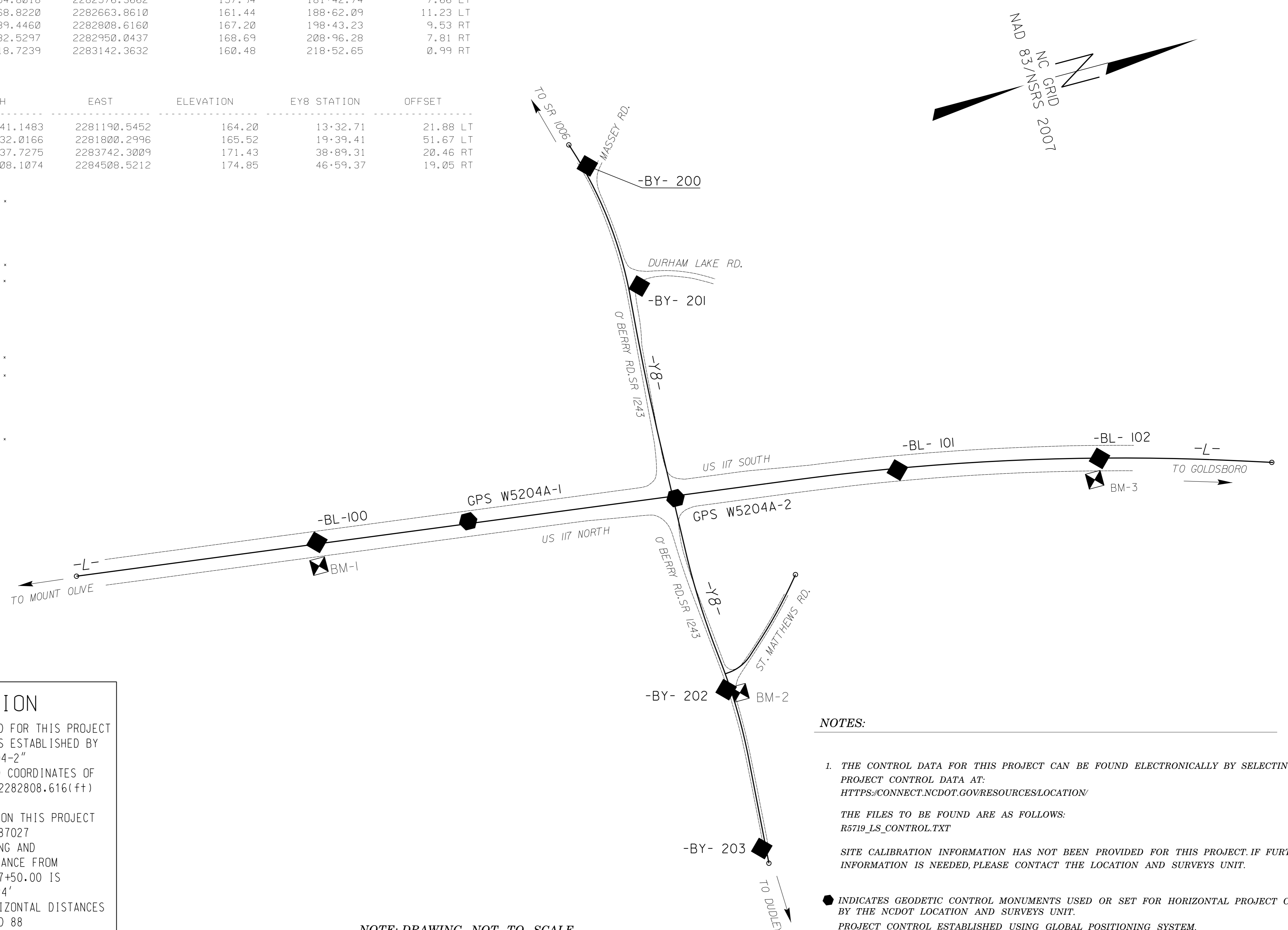
BL POINT	DESC.	NORTH	EAST	ELEVATION	L STATION	OFFSET
100	BL-100	552254.8018	2282576.3662	157.94	181+42.74	7.66 LT
1	GPS W5204A-1	552968.8220	2282663.8610	161.44	188+62.09	11.23 LT
2	GPS W5204A-2	553939.4460	2282808.6160	167.20	198+43.23	9.53 RT
101	BL-101	554982.5297	2282950.0437	168.69	208+96.28	7.81 RT
102	BL-102	555918.7239	2283142.3632	160.48	218+52.65	0.99 RT

BY POINT	DESC.	NORTH	EAST	ELEVATION	EY8 STATION	OFFSET
200	BY-200	553941.1483	2281190.5452	164.20	13+32.71	21.88 LT
201	BY-201	554032.0166	2281800.2996	165.52	19+39.41	51.67 LT
202	BY-202	553937.7275	2283742.3009	171.43	38+89.31	20.46 RT
203	BY-203	553908.1074	2284508.5212	174.85	46+59.37	19.05 RT

 BM-1 ELEVATION = 159.93
 N 552243 E 2282697
 L STATION 181+46.00 114 RIGHT
 RR SPIKE IN BASE 10" PINE

 BM-2 ELEVATION = 172.89
 N 554005 E 2283781
 L STATION 200+32.00 966 RIGHT
 GEODETIC MARKER (BRASS CAP IN CONC.)
 STAMPED STA. 18-LB-6

 BM-3 ELEVATION = 162.63
 N 555868 E 2283234
 L STATION 218+26.00 103 RIGHT
 RR SPIKE IN BASE OF 18" PINE



DATUM DESCRIPTION

THE LOCALIZED COORDINATE SYSTEM DEVELOPED FOR THIS PROJECT IS BASED ON THE STATE PLANE COORDINATES ESTABLISHED BY NCGS FOR MONUMENT "GPS W5204-2" WITH NAD 83/NSRS 2007 STATE PLANE GRID COORDINATES OF NORTHING: 553939.446(ft) EASTING: 2282808.616(ft) ELEVATION: 167.20(ft)

THE AVERAGE COMBINED GRID FACTOR USED ON THIS PROJECT (GROUND TO GRID) IS: 0.99987027

THE N.C. LAMBERT GRID BEARING AND LOCALIZED HORIZONTAL GROUND DISTANCE FROM "GPS W5204-2" TO -L- STATION 157+50.00 IS
 S 7°24'12.53" W 4.093.24'

ALL LINEAR DIMENSIONS ARE LOCALIZED HORIZONTAL DISTANCES
 VERTICAL DATUM USED IS NAVD 88

NOTES:

1. THE CONTROL DATA FOR THIS PROJECT CAN BE FOUND ELECTRONICALLY BY SELECTING PROJECT CONTROL DATA AT:
[HTTPS://CONNECT.NCDOT.GOV/RESOURCES/LOCATION](https://connect.ncdot.gov/resources/location)

THE FILES TO BE FOUND ARE AS FOLLOWS:
 R5719_LS_CONTROL.TXT

SITE CALIBRATION INFORMATION HAS NOT BEEN PROVIDED FOR THIS PROJECT. IF FURTHER INFORMATION IS NEEDED, PLEASE CONTACT THE LOCATION AND SURVEYS UNIT.

● INDICATES GEODETIC CONTROL MONUMENTS USED OR SET FOR HORIZONTAL PROJECT CONTROL BY THE NCDOT LOCATION AND SURVEYS UNIT.
 PROJECT CONTROL ESTABLISHED USING GLOBAL POSITIONING SYSTEM.

NOTE: DRAWING NOT TO SCALE