

**This electronic collection of documents is provided
for the convenience of the user
and is Not a Certified Document –**

**The documents contained herein were originally issued
and sealed by the individuals whose names and license
numbers appear on each page, on the dates appearing
with their signature on that page.**

**This file or an individual page
shall not be considered a certified document.**

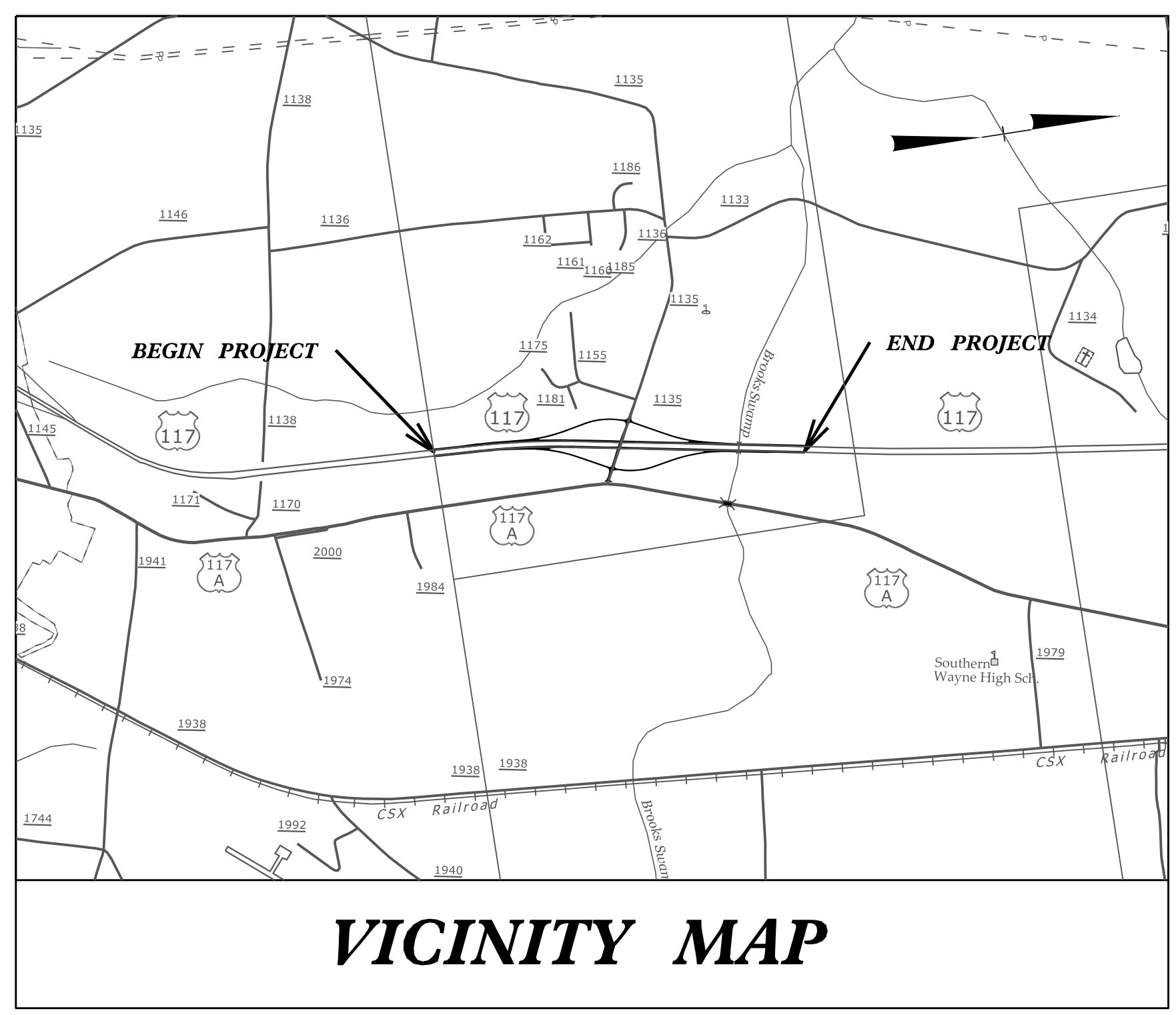
09/08/99

TIP PROJECT: R-5719

STATE OF NORTH CAROLINA DIVISION OF HIGHWAYS

T.I.P. NO.	SHEET NO.
R-5719	UO-1

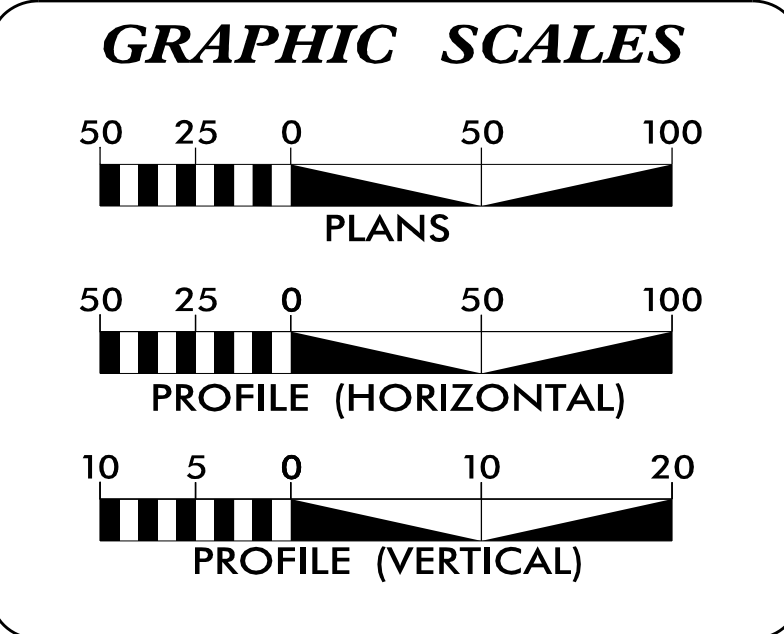
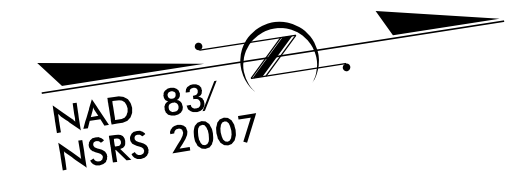
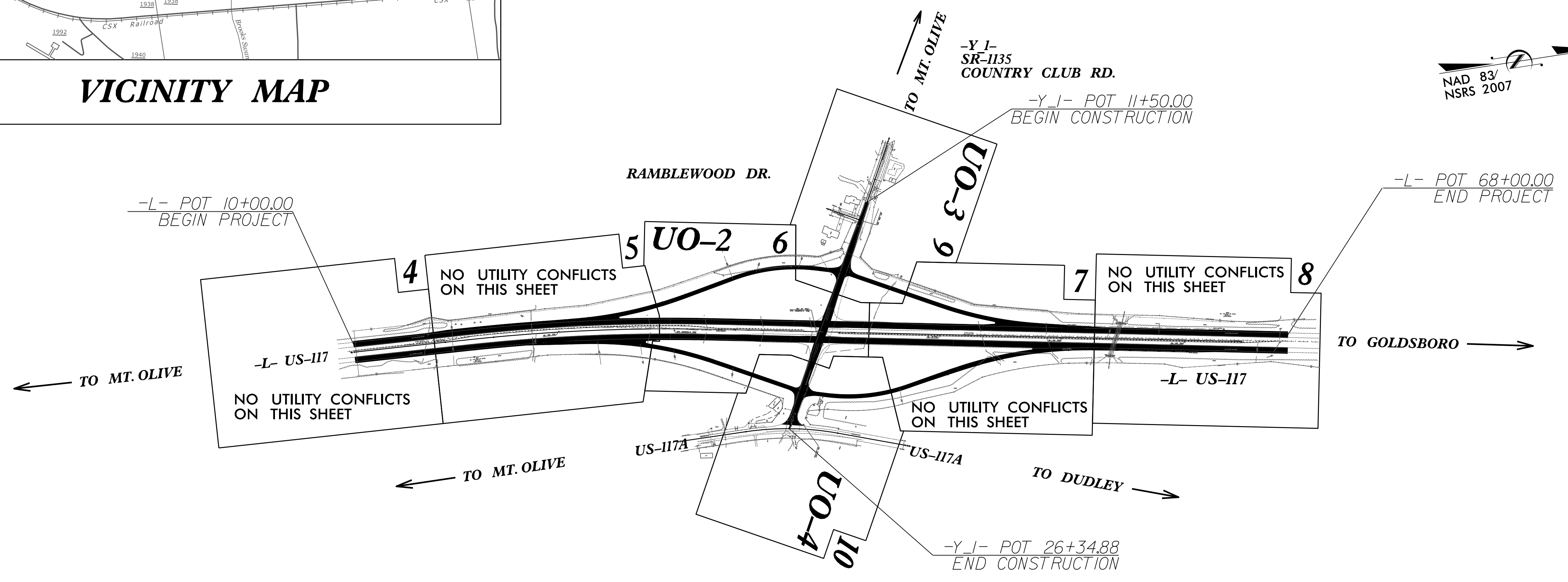
NOTE:
ALL UTILITY WORK SHOWN ON THIS SHEET IS DONE BY OTHERS.
NO PAYMENT WILL BE MADE TO THE CONTRACTOR FOR UTILITY WORK SHOWN ON THIS SHEET.



UTILITIES BY OTHERS PLANS WAYNE COUNTY

LOCATION: US-117 AND SR-1135 (COUNTRY CLUB RD.) INTERCHANGE

TYPE OF WORK: POWER, TELEPHONE, CATV, AND WATER RELOCATION



INDEX OF SHEETS

SHEET NO.:	DESCRIPTION:
UO-1	TITLE SHEET
UO-2 THRU UO-4	UBO PLAN SHEETS

UTILITY OWNERS WITH CONFLICTS

(A) TRI-COUNTY EMC (POWER DISTRIBUTION)
 (B) AT&T (TELEPHONE)
 (C) TIME WARNER CABLE (CATV)
 (D) TOWN OF MOUNT OLIVE (WATER)

PREPARED IN THE OFFICE OF:

1223 JONES FRANKLIN ROAD
 Raleigh, N.C. 27606
 License No. F-0377
 Bus: 919 851 8077
 Fax: 919 851 8107

John D. Schriener, PLS PROJECT UTILITY COORDINATOR

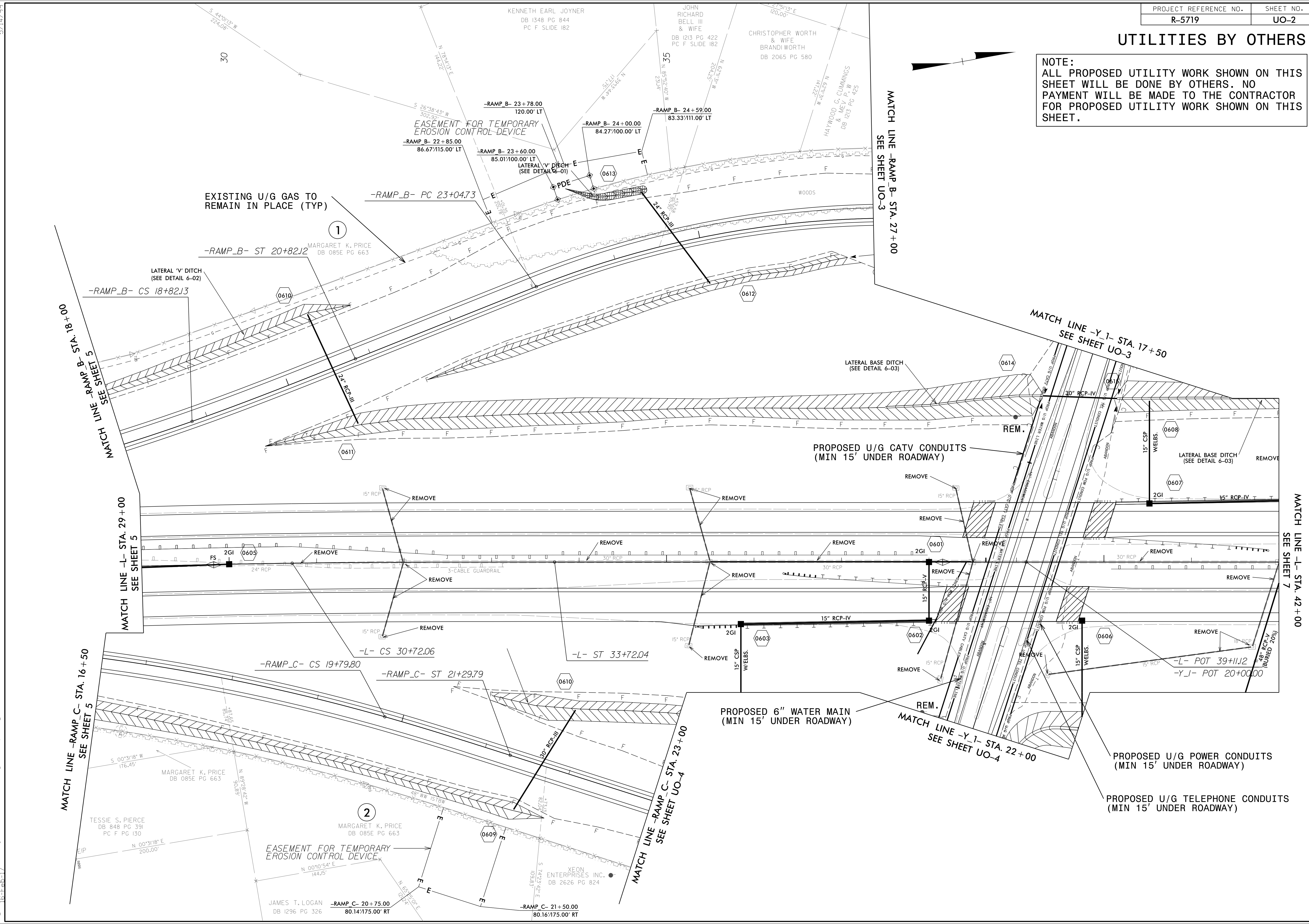
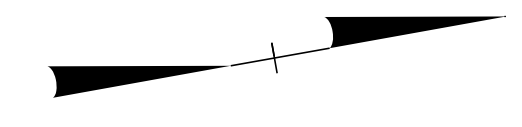
DIVISION OF HIGHWAYS
 DIVISION 4
 509 Ward Blvd.
 Wilson NC, 27895
 252-237-6164

Jerry Page, PE PROJECT ENGINEER
 D.R. Etheridge PROJECT DESIGN ENGINEER

\$\$\$\$\$ SYSTEMS \$\$\$
\$\$\$\$\$ DGN \$\$\$
\$\$\$\$\$ USRNAME \$\$\$

UTILITIES BY OTHERS

NOTE:
ALL PROPOSED UTILITY WORK SHOWN ON THIS SHEET WILL BE DONE BY OTHERS. NO PAYMENT WILL BE MADE TO THE CONTRACTOR FOR PROPOSED UTILITY WORK SHOWN ON THIS SHEET.



MATCH LINE -RAMP_B- STA. 18+00
SEE SHEET 5

MATCH LINE -L- STA. 29+00
SEE SHEET 5

MATCH LINE -RAMP_C- STA. 16+50
SEE SHEET 5

MATCH LINE -RAMP_C- STA. 23+00
SEE SHEET UO-4

MATCH LINE -RAMP_B- STA. 27+00
SEE SHEET UO-3

MATCH LINE -Y_1- STA. 17+50
SEE SHEET UO-3

MATCH LINE -L- STA. 42+00
SEE SHEET 7

5/14/99
I:\021403 (E)D:\P\proj\5719.DOC4.ut_r.dwg6_UO2_psh.dgn
C:\Users\Enginr\My Documents\Projects\5719.DOC4.ut_r.dwg6_UO2_psh.dgn

EXISTING U/G GAS TO REMAIN IN PLACE (TYP)

PROPOSED U/G CATV CONDUITS (MIN 15' UNDER ROADWAY)

PROPOSED 6" WATER MAIN (MIN 15' UNDER ROADWAY)

PROPOSED U/G POWER CONDUITS (MIN 15' UNDER ROADWAY)

PROPOSED U/G TELEPHONE CONDUITS (MIN 15' UNDER ROADWAY)

EASEMENT FOR TEMPORARY EROSION CONTROL DEVICE

EASEMENT FOR TEMPORARY EROSION CONTROL DEVICE

MARGARET K. PRICE DB 085E PG 663

MARGARET K. PRICE DB 085E PG 663

TESSIE S. PIERCE DB 848 PG 391 PC F PG 130

KENNETH EARL JOYNER DB 1348 PG 844 PC F SLIDE 182

JOHN RICHARD BELL III & WIFE DB 1213 PG 422 PC F SLIDE 182

CHRISTOPHER WORTH & WIFE BRANDI WORTH DB 2065 PG 580

HAYWOOD G. CUMMINGS & WIFE P. W. W. DB 1213 PG 425

JAMES T. LOGAN DB 1296 PG 326

XEON ENTERPRISES, INC. DB 2626 PG 824

MARGARET K. PRICE DB 085E PG 663

MARGARET K. PRICE DB 085E PG 663

TESSIE S. PIERCE DB 848 PG 391 PC F PG 130

KENNETH EARL JOYNER DB 1348 PG 844 PC F SLIDE 182

JOHN RICHARD BELL III & WIFE DB 1213 PG 422 PC F SLIDE 182

CHRISTOPHER WORTH & WIFE BRANDI WORTH DB 2065 PG 580

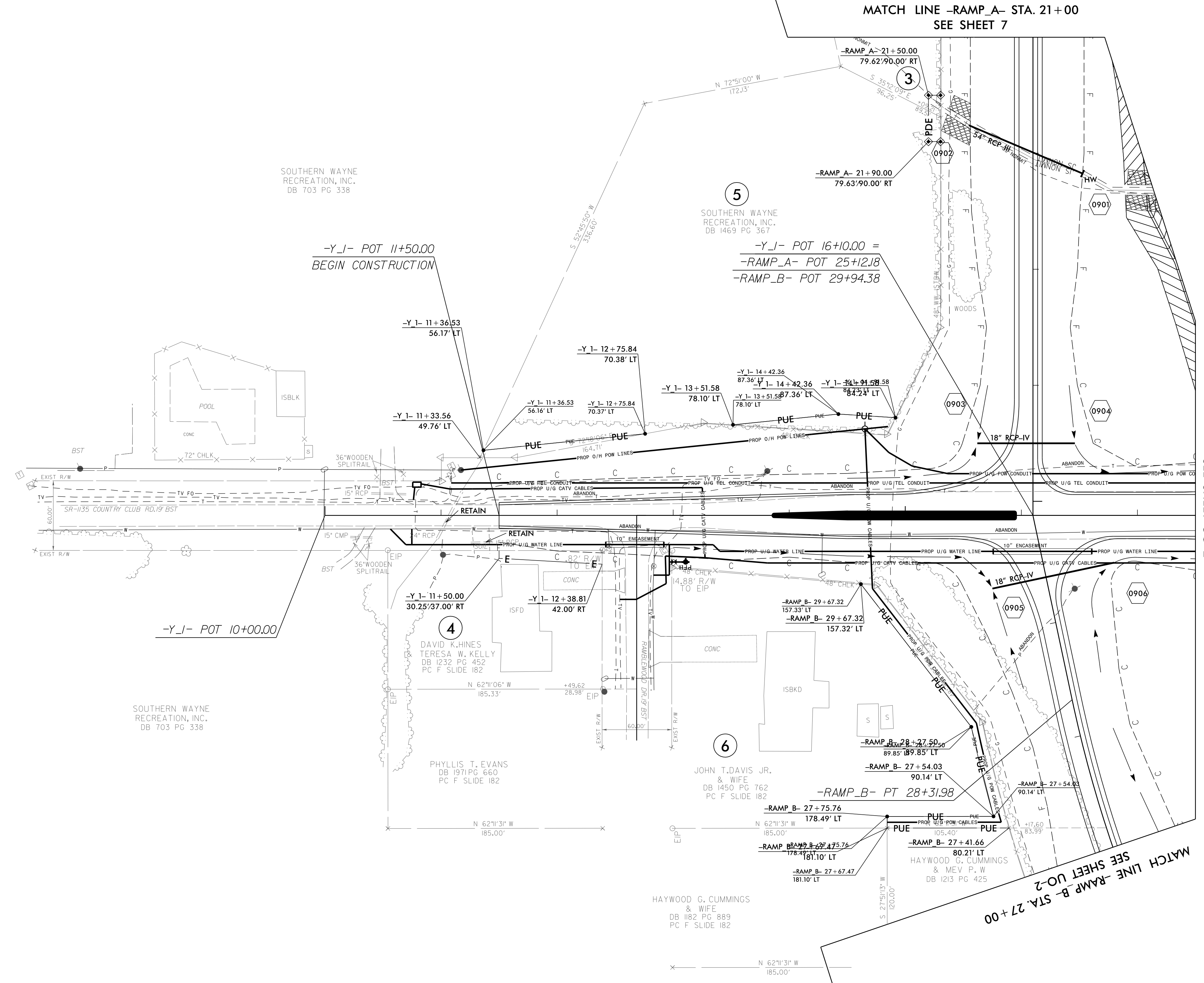
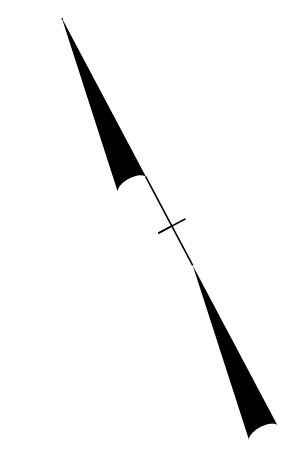
HAYWOOD G. CUMMINGS & WIFE P. W. W. DB 1213 PG 425

JAMES T. LOGAN DB 1296 PG 326

XEON ENTERPRISES, INC. DB 2626 PG 824

UTILITIES BY OTHERS

NOTE:
 ALL PROPOSED UTILITY WORK SHOWN ON THIS SHEET WILL BE DONE BY OTHERS. NO PAYMENT WILL BE MADE TO THE CONTRACTOR FOR PROPOSED UTILITY WORK SHOWN ON THIS SHEET.



MATCH LINE -RAMP_A- STA. 21+00
 SEE SHEET 7

-Y_J- POT 11+50.00
 BEGIN CONSTRUCTION

-Y_J- POT 16+10.00 =
 -RAMP_A- POT 25+12.18
 -RAMP_B- POT 29+94.38

-Y_J- POT 10+00.00

MATCH LINE -Y_1- STA. 17+50
 SEE SHEET UO-2

MATCH LINE -RAMP_B- STA. 27+50
 SEE SHEET UO-2

SOUTHERN WAYNE
 RECREATION, INC.
 DB 703 PG 338

SOUTHERN WAYNE
 RECREATION, INC.
 DB 1469 PG 367

SOUTHERN WAYNE
 RECREATION, INC.
 DB 703 PG 338

DAVID K. HINES
 TERESA W. KELLY
 DB 1232 PG 452
 PC F SLIDE 182

PHYLLIS T. EVANS
 & WIFE
 DB 191 PG 660
 PC F SLIDE 182

JOHN T. DAVIS JR.
 & WIFE
 DB 1450 PG 762
 PC F SLIDE 182

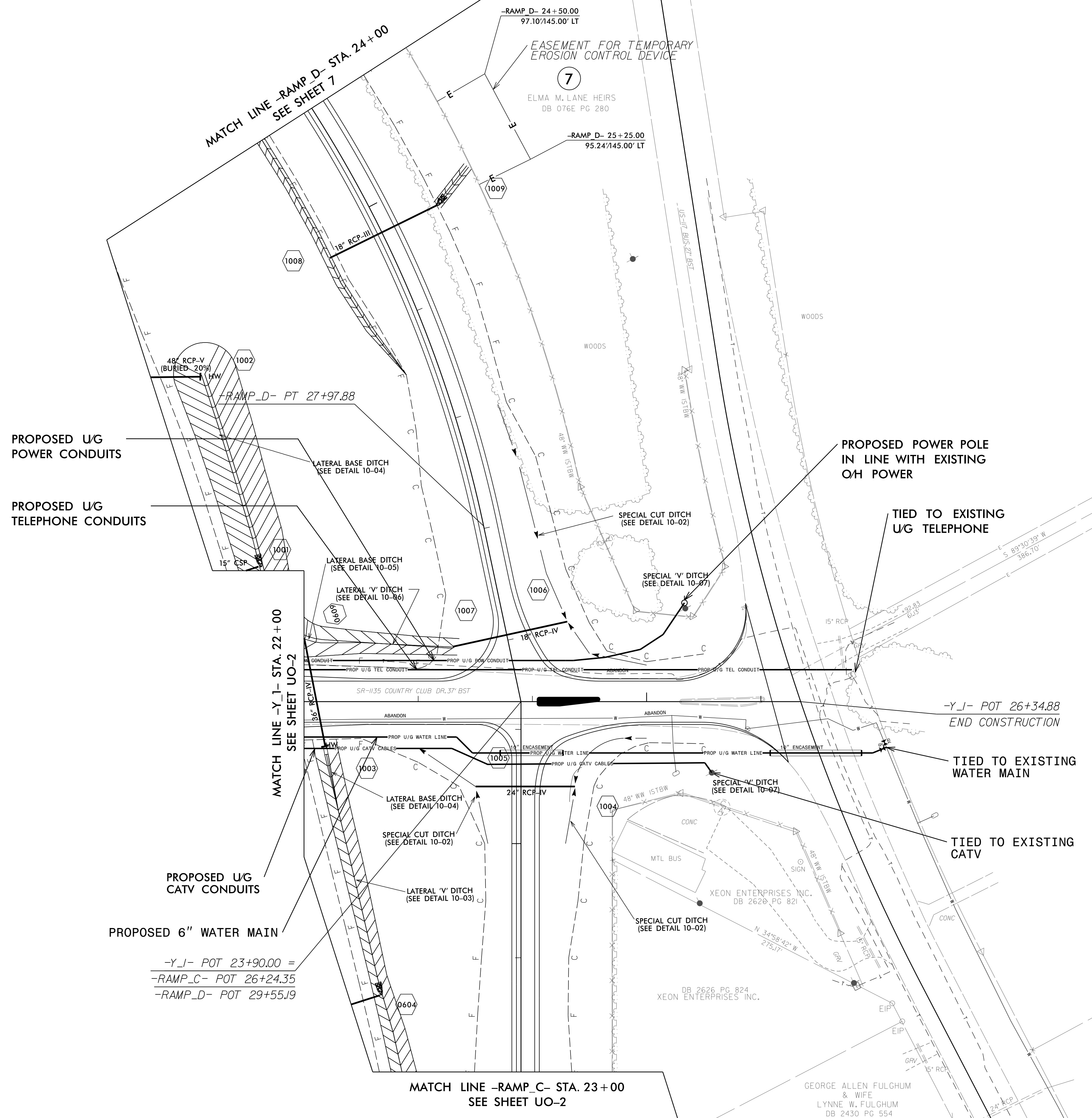
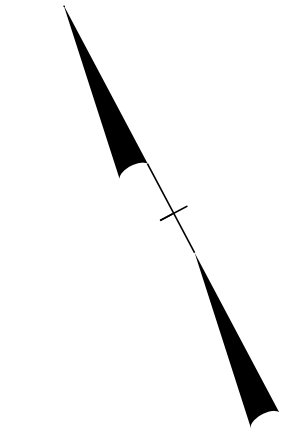
HAYWOOD G. CUMMINGS
 & WIFE
 DB 1182 PG 889
 PC F SLIDE 182

5/14/99

10:24:43 AM
 C:\Users\Engineering\Documents\Projects\RE5719_DDC4\ut_rdy_9_U03_psh.dgn

UTILITIES BY OTHERS

NOTE:
ALL PROPOSED UTILITY WORK SHOWN ON THIS SHEET WILL BE DONE BY OTHERS. NO PAYMENT WILL BE MADE TO THE CONTRACTOR FOR PROPOSED UTILITY WORK SHOWN ON THIS SHEET.



-Y-I- POT 23+90.00 =
-RAMP_C- POT 26+24.35
-RAMP_D- POT 29+55.19

SHIRLEY ANN PIGFORD
DB 1750 PG 652
DB 1398 PG 82

GEORGE ALLEN FULGHUM
& WIFE
LYNNE W. FULGHUM
DB 2430 PG 554

DB 2626 PG 824
XEON ENTERPRISES INC.

DB 2626 PG 821
XEON ENTERPRISES INC.

MICHAEL BRENT WILLIAMS
DB 2629 PG 415

ELMA M. LANE HEIRS
DB 076E PG 280

5/14/99
I:\Projects\195719\DDC4\ut...rd\10_UO4_psh.dgn