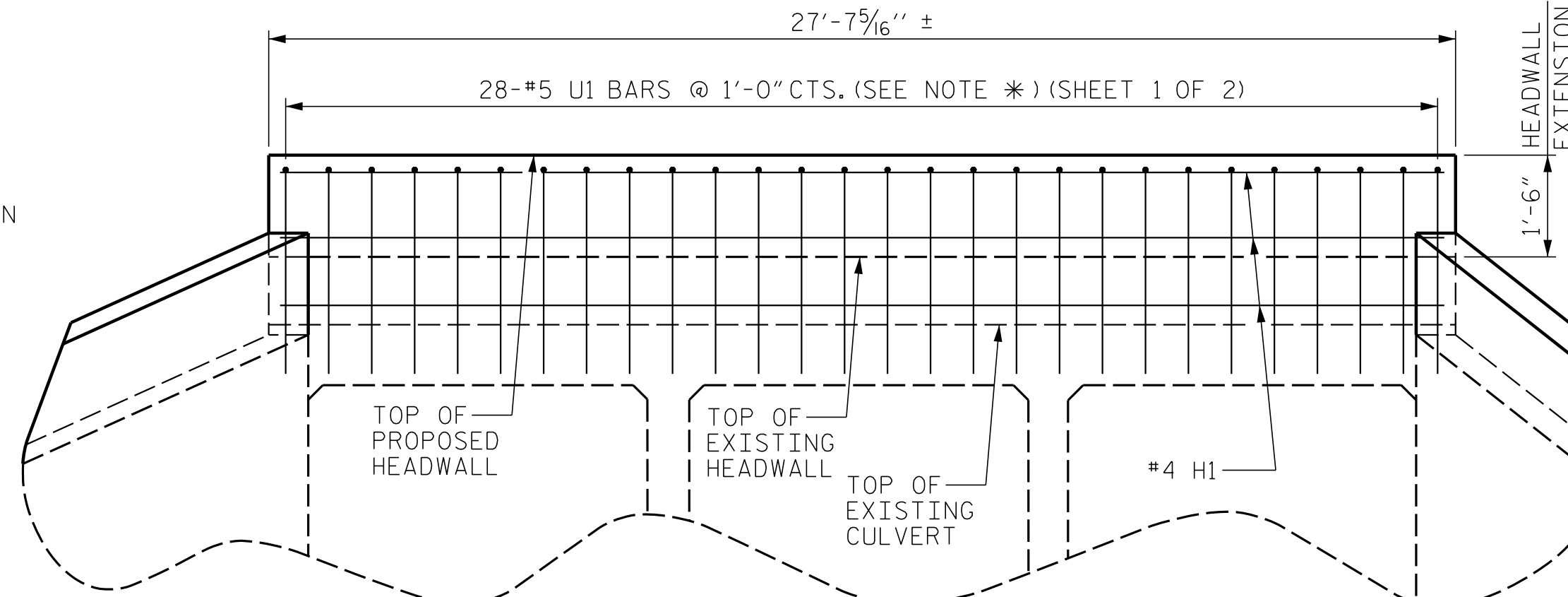


PARTIAL CULVERT SECTION NORMAL TO ROADWAY

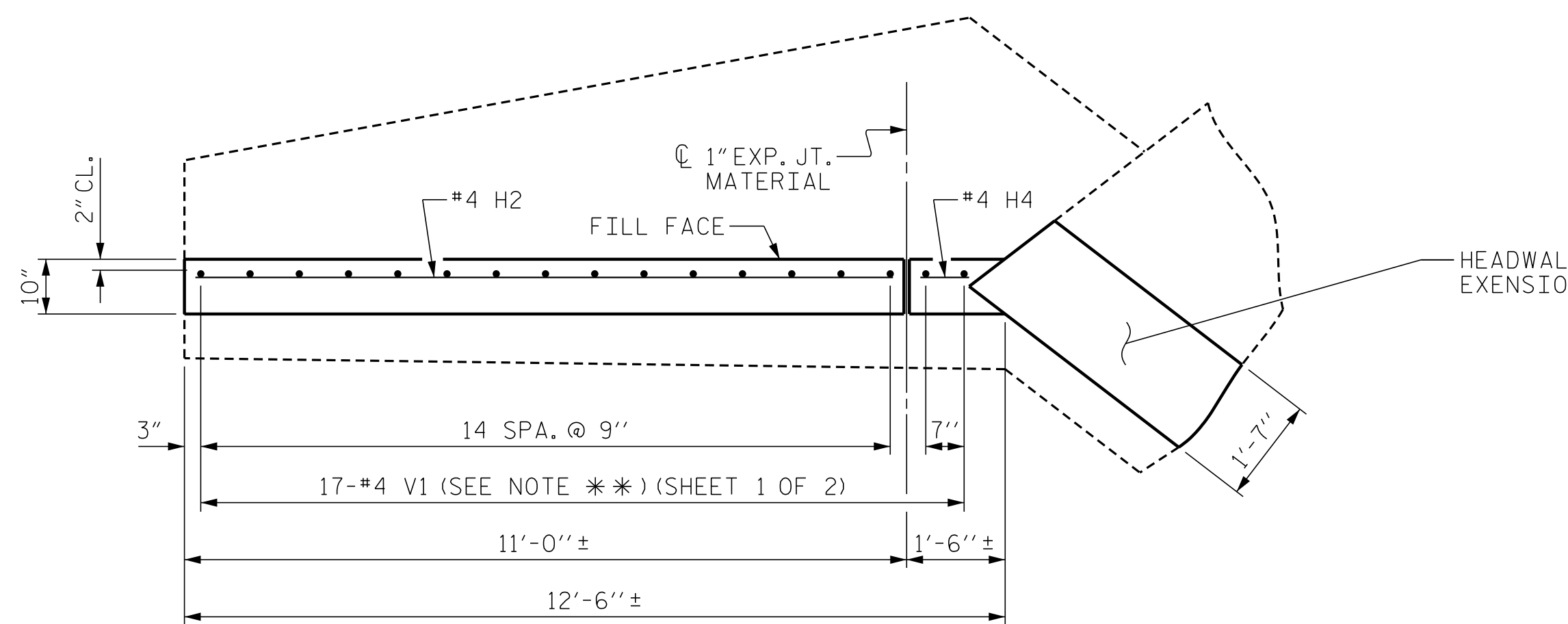
REINFORCEMENT FOR WING EXTENSION NOT SHOWN FOR CLARITY



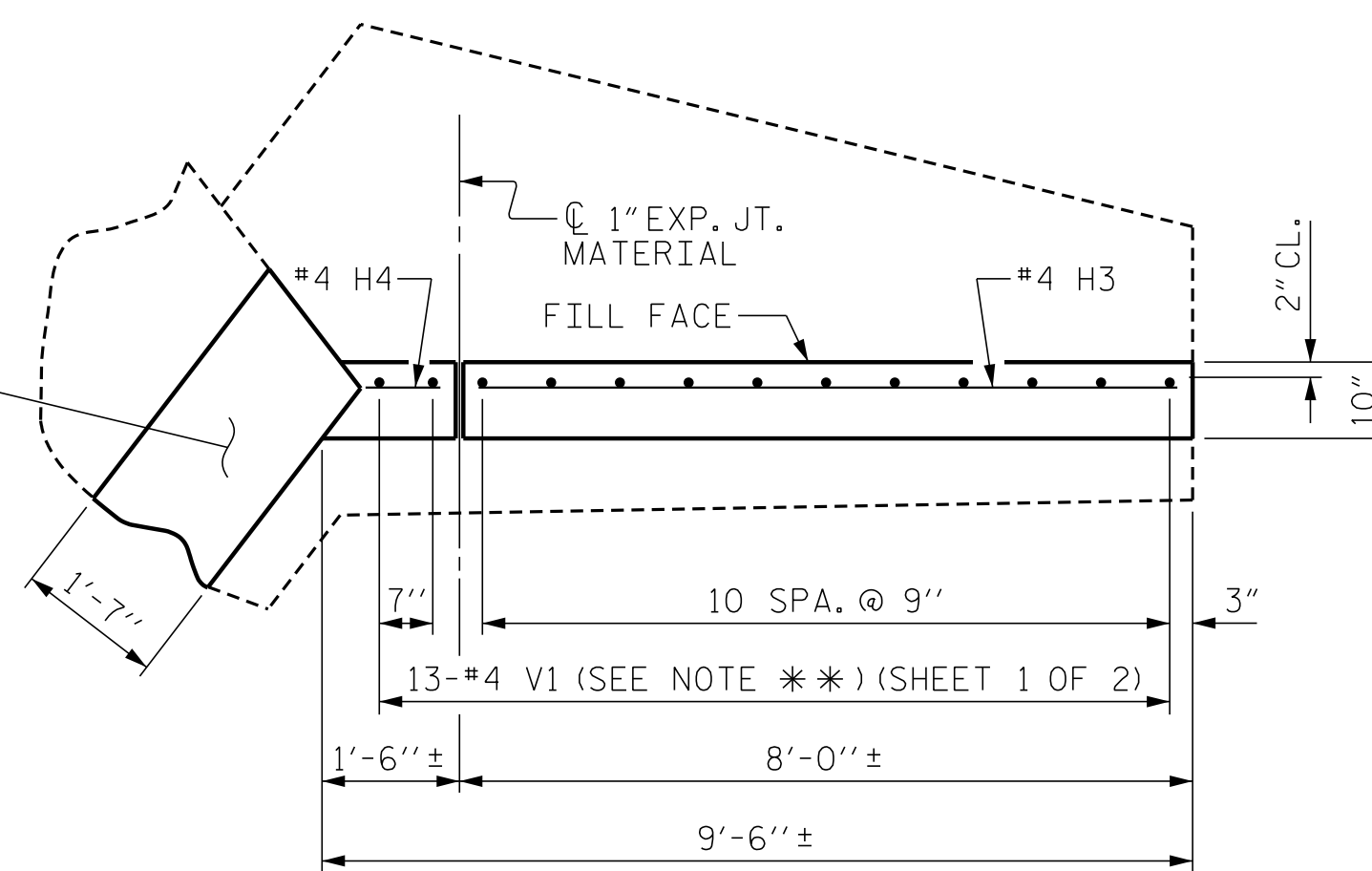
HEADWALL ELEVATION NORMAL TO SKEW

(TYP. EA. HEADWALL)
REINFORCEMENT FOR WING EXTENSION NOT SHOWN FOR CLARITY

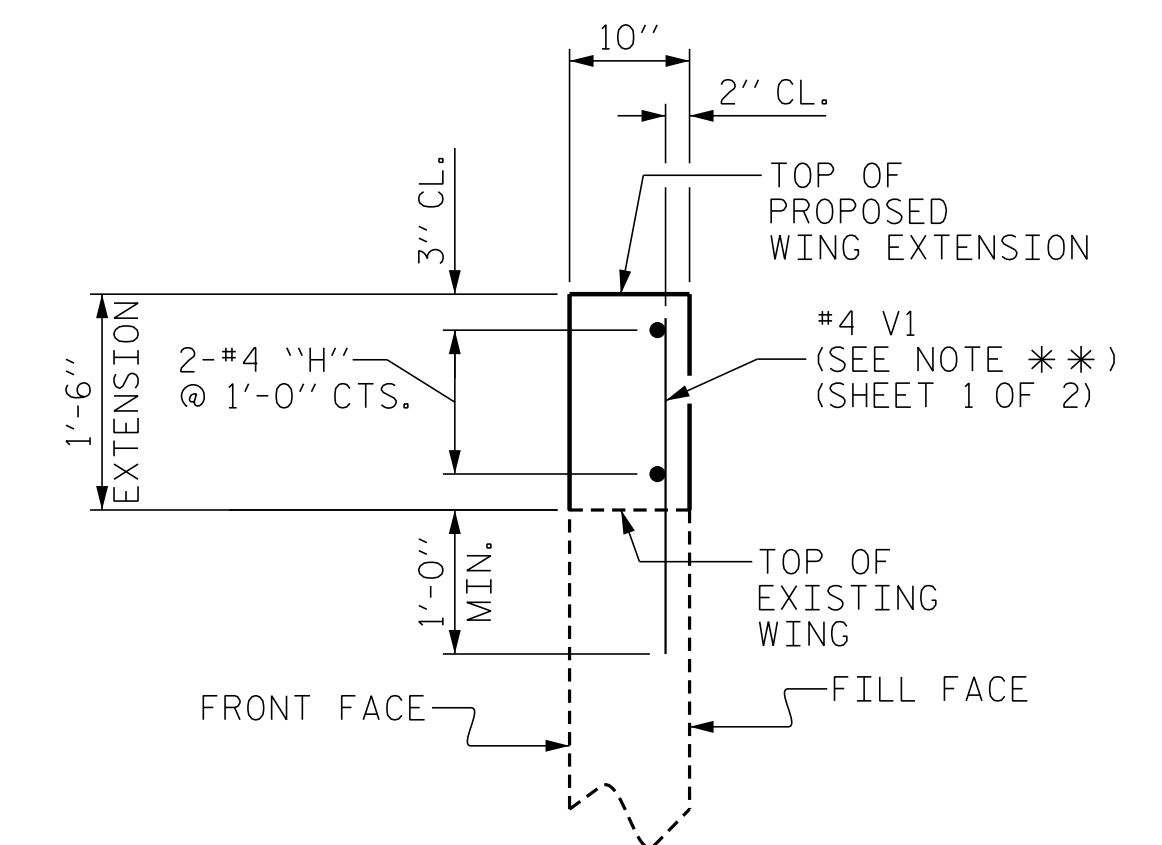
BILL OF MATERIAL					
BAR	NO.	SIZE	TYPE	LENGTH	WEIGHT
H1	10	#4	STR	27'-3"	182
H2	4	#4	STR	11'-0"	29
H3	4	#4	STR	8'-1"	22
H4	8	#4	STR	10"	4
U1	56	#5	1	5'-3"	307
V1	60	#4	STR	2'-4"	94
REINFORCING STEEL					638 LBS.
CLASS A CONCRETE					
4 WINGS					2.0 C.Y.
2 HEADWALLS					5.5 C.Y.
TOTAL					7.5 C.Y.
BAR TYPES					
ALL BAR DIMENSIONS ARE OUT TO OUT.					



PLAN W1

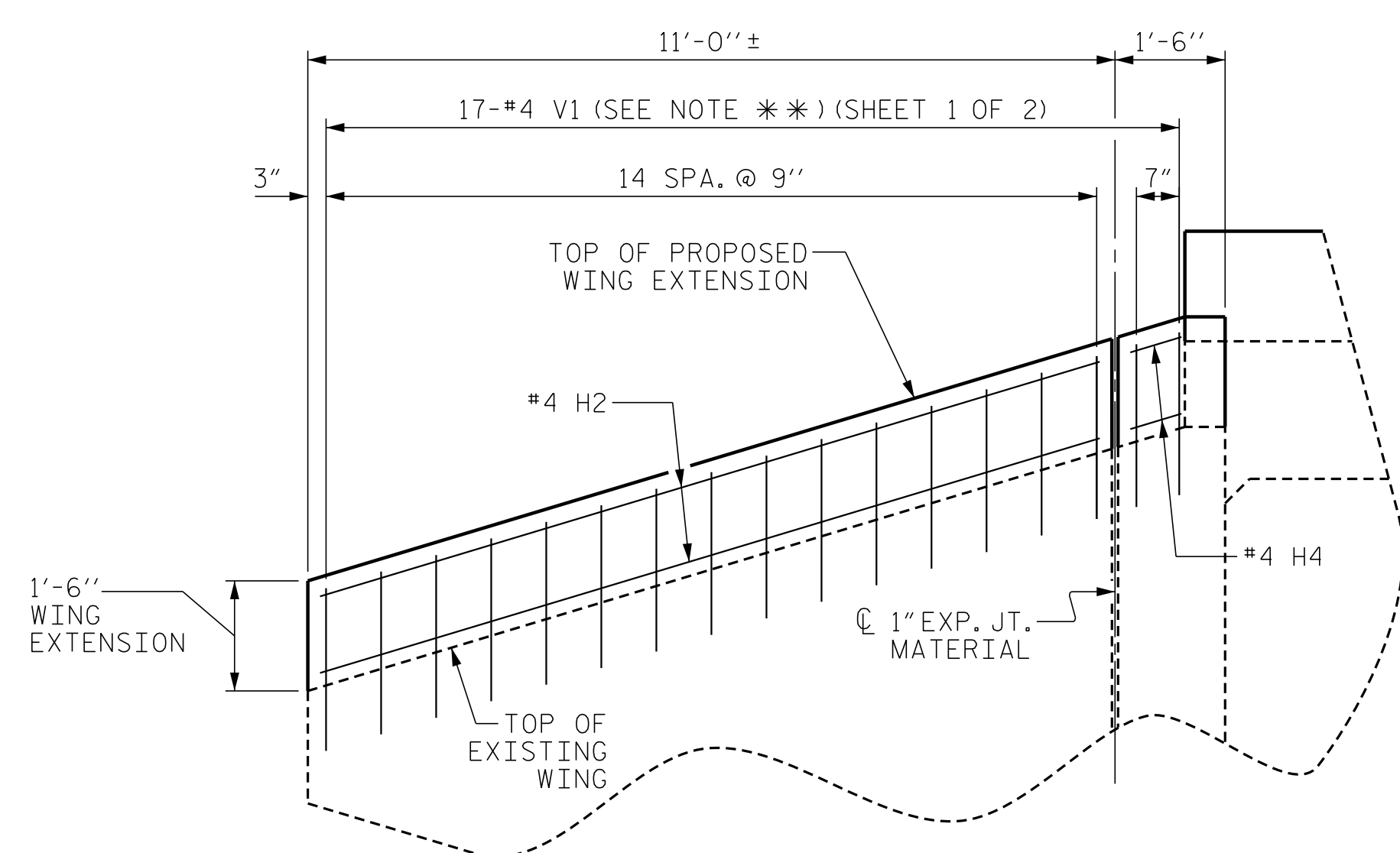


PLAN W2

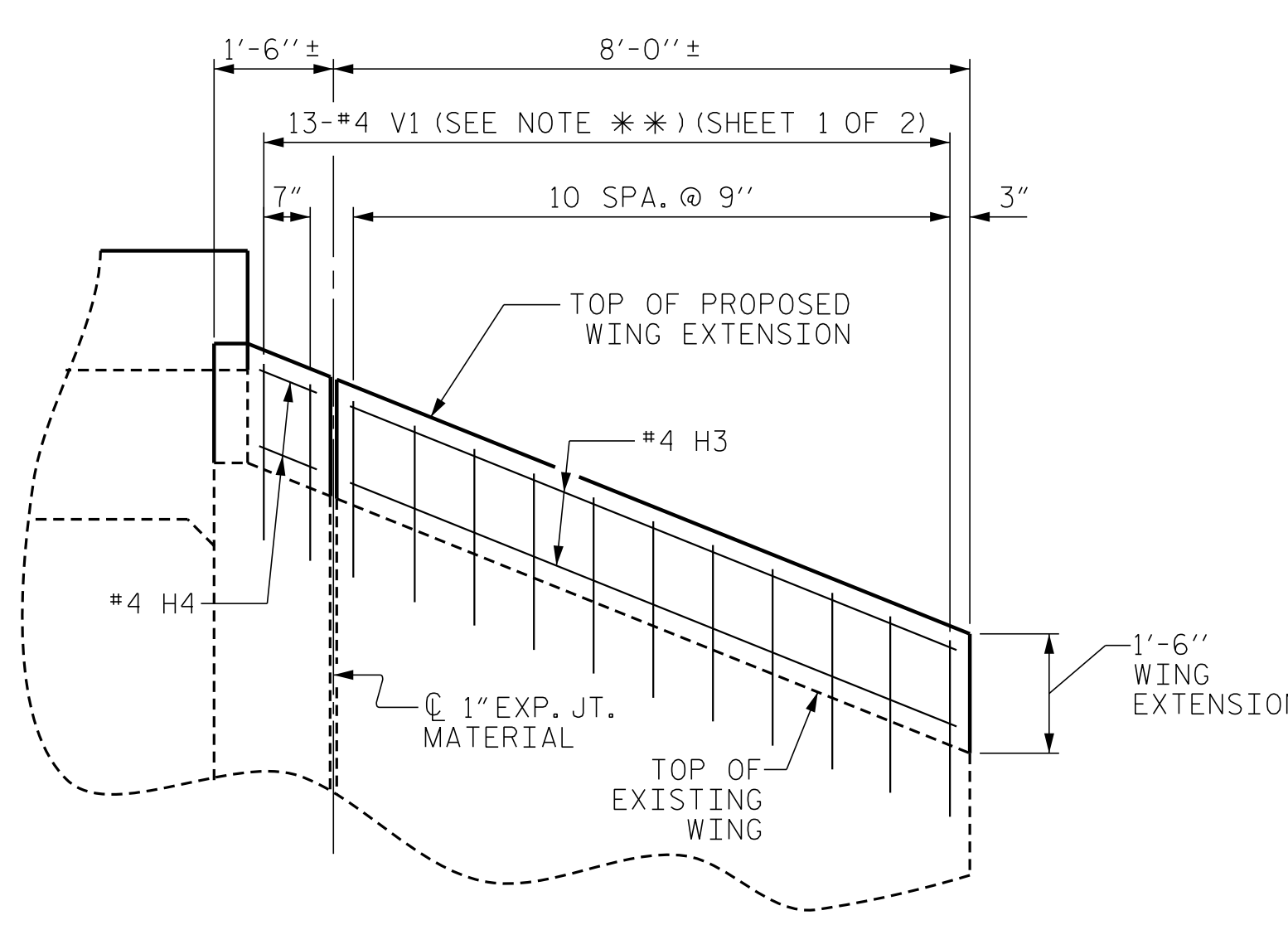


WING EXTENSION SECTION

(TYP. EA. WING)



PARTIAL ELEVATION W1



PARTIAL ELEVATION W2

PROJECT NO. R-5719
WAYNE COUNTY
 STATION: 57+31.75 -L-
 SHEET 2 OF 2

ENGINEER OF RECORD

DocuSigned by:
 John Arthur Dilworth
 62186260250438

ETHERILL ENGINEERING
 1223 Jones Franklin Rd.
 Raleigh, N.C. 27606
 Bus: 919 851 8077
 Fax: 919 851 8107
 LICENSE NO. F-0377

STATE OF NORTH CAROLINA DEPARTMENT OF TRANSPORTATION RALEIGH					
HEADWALL AND WING EXTENSION ON EXISTING TRIPLE 8'x7' CONCRETE BOX CULVERT					
REVISIONS					
NO.	BY:	DATE:	NO.	BY:	DATE:
1			3		
2			4		

SHEET NO. C01-2	
TOTAL SHEETS	2

DRAWN BY : RA/GMG DATE : 12-15
 CHECKED BY : J.A. DILWORTH DATE : 1-16

DOCUMENT NOT CONSIDERED FINAL
 UNLESS ALL SIGNATURES COMPLETED