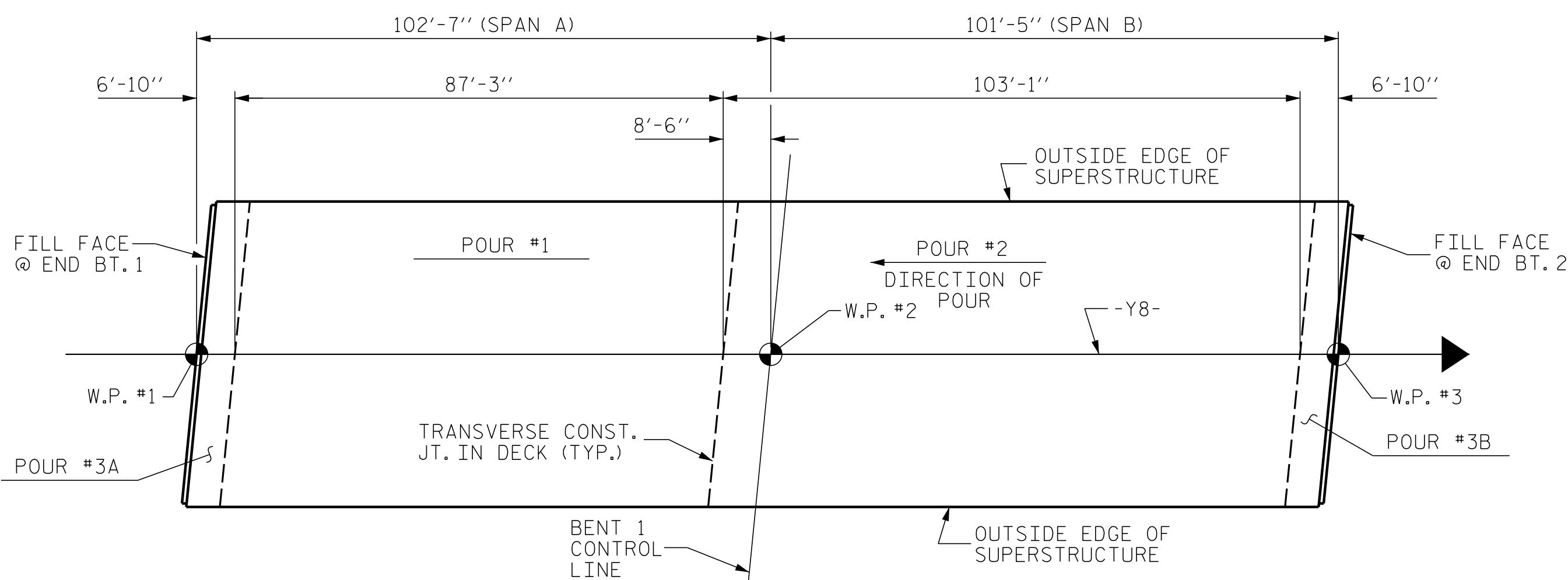
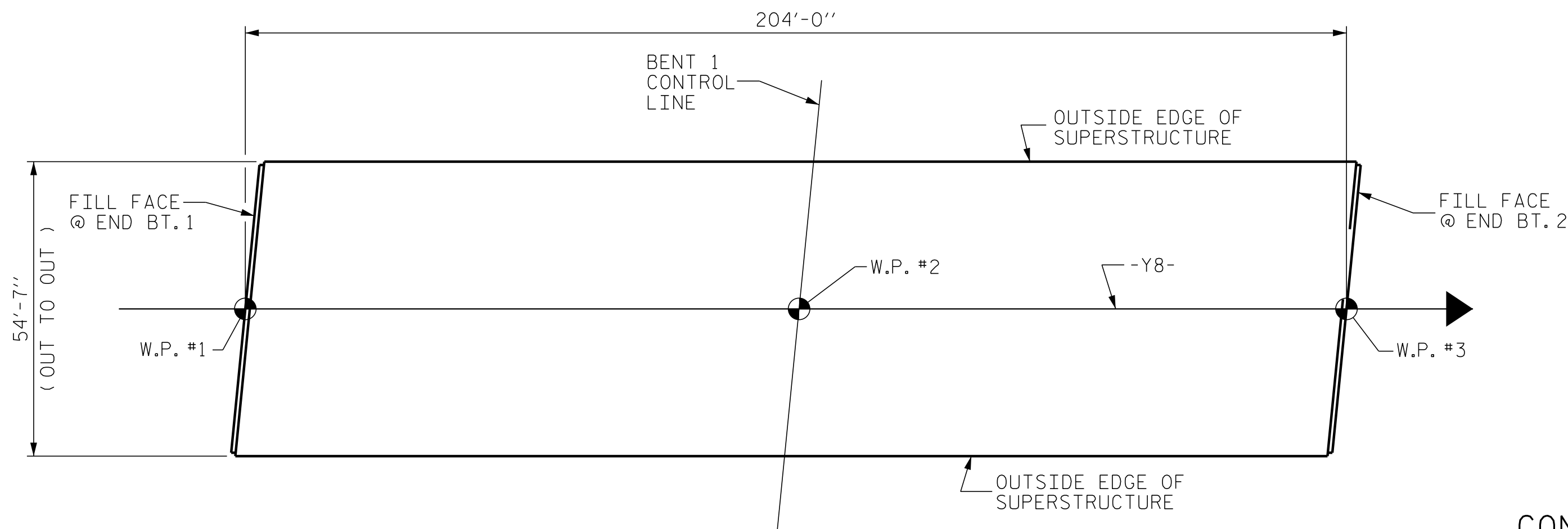


OPTIONAL DECK POUR DETAIL



CONCRETE DECK POUR DETAIL

NOTE : EACH POUR #3 INCLUDES UPPER PART OF THE INTEGRAL END BENT.



LAYOUT FOR COMPUTING AREA REINFORCED CONCRETE DECK SLAB (SQ. FT. = 11,135)

REINFORCING BAR SCHEDULE

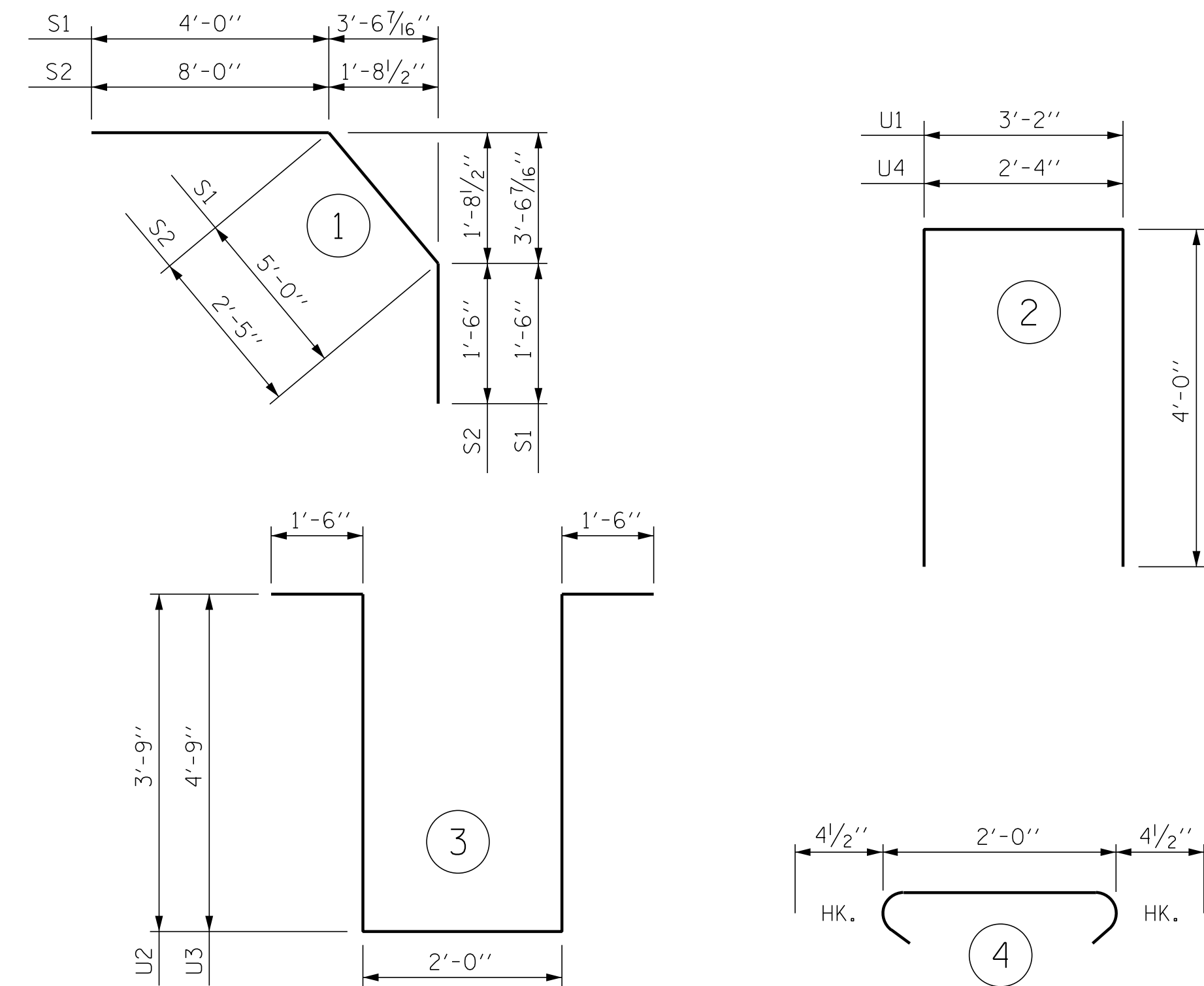
SPAN "A-B"

BAR	No.	SIZE	TYPE	LENGTH	WEIGHT
*A1	394	#5	STR	54'-3"	22294
A2	394	#5	STR	54'-3"	22294
*A101	2	#5	STR	49'-11"	104
*A102	2	#5	STR	44'-10"	94
*A103	2	#5	STR	39'-9"	83
*A104	2	#5	STR	34'-8"	72
*A105	2	#5	STR	29'-7"	62
*A106	2	#5	STR	24'-6"	51
*A107	2	#5	STR	19'-5"	41
*A108	2	#5	STR	14'-4"	30
*A109	2	#5	STR	9'-3"	19
*A110	2	#5	STR	4'-2"	9
A201	2	#5	STR	49'-11"	104
A202	2	#5	STR	44'-10"	94
A203	2	#5	STR	39'-9"	83
A204	2	#5	STR	34'-8"	72
A205	2	#5	STR	29'-7"	62
A206	2	#5	STR	24'-6"	51
A207	2	#5	STR	19'-5"	41
A208	2	#5	STR	14'-4"	30
A209	2	#5	STR	9'-3"	19
A210	2	#5	STR	4'-2"	9
*B1	146	#7	STR	20'-7"	6143
*B2	148	#4	STR	25'-7"	2529
*B3	111	#7	STR	27'-5"	6220
*B4	36	#7	STR	30'-10"	2269
B5	260	#5	STR	52'-2"	14147
K1	20	#4	STR	27'-7"	369
K2	10	#4	STR	7'-5"	50
K3	20	#4	STR	8'-5"	112
K4	10	#4	STR	7'-11"	53
K5	10	#4	STR	6'-11"	46
K6	10	#4	STR	24'-9"	165
K7	8	#4	STR	2'-7"	14
K8	8	#4	STR	3'-1"	16
K9	4	#4	STR	2'-4"	6
K10	10	#4	STR	5'-9"	38
K11	10	#4	STR	7'-5"	50
K12	30	#4	STR	7'-9"	155
*S1	78	#4	1	10'-6"	547
*S2	78	#4	1	11'-11"	621
S3	150	#4	4	2'-9"	276
U1	78	#4	2	11'-2"	582
U2	10	#4	3	12'-6"	84
U3	30	#4	3	14'-6"	291
U4	4	#4	2	10'-4"	28

REINFORCING STEEL 39,341 LBS.
* EPOXY COATED REINFORCING STEEL 41,188 LBS.

* THESE BARS ARE EPOXY COATED

BAR TYPES



ALL BAR DIMENSIONS ARE OUT TO OUT

SUPERSTRUCTURE BILL OF MATERIAL

	CLASS AA CONCRETE	REINFORCING STEEL	* EPOXY COATED REINFORCING STEEL
	(CU. YDS.)	(LBS.)	(LBS.)
TOTALS **	429.8	39,341	41,188

** QUANTITIES FOR CONCRETE PARAPET ARE NOT INCLUDED

GROOVING BRIDGE FLOORS

APPROACH SLABS	1,404 SQ.FT.
BRIDGE DECK	9,914 SQ.FT.
TOTAL	11,318 SQ.FT.

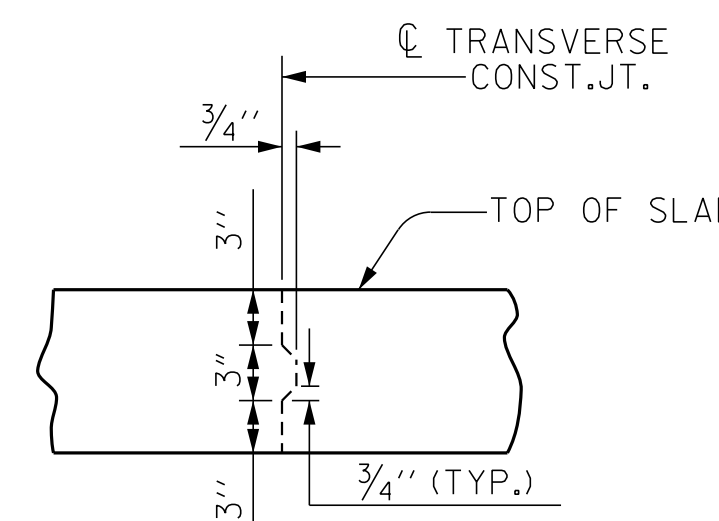
SUPERSTRUCTURE REINFORCING STEEL LENGTHS ARE BASED ON THE FOLLOWING MINIMUM SPLICE LENGTHS

BAR SIZE	SUPERSTRUCTURE EXCEPT APPROACH SLABS, PARAPET, AND BARRIER RAIL		APPROACH SLABS		PARAPET AND BARRIER RAIL
	EPOXY COATED	UNCOATED	EPOXY COATED	UNCOATED	
#4	2'-0"	1'-9"	2'-0"	1'-9"	2'-9"
#5	2'-6"	2'-2"	2'-6"	2'-2"	3'-5"
#6	3'-0"	2'-7"	3'-10"	2'-7"	4'-4"
#7	5'-3"	3'-6"			
#8	6'-10"	4'-7"			

CLASS AA CONCRETE BREAKDOWN

POUR #1	153.0	CY
POUR #2	198.6	CY
POUR #3A	39.1	CY
POUR #3B	39.1	CY
CLASS AA CONCRETE BREAKDOWN TOTAL	429.8	CY

PROJECT NO. U-5796
WAYNE COUNTY
STATION: 27+41.30 -Y8-



TRANSVERSE CONSTRUCTION JOINT DETAIL

NOTE: SLAB REINFORCING STEEL SHALL BE CONTINUOUS THRU JOINT

ENGINEER OF RECORD
NORTH CAROLINA PROFESSIONAL SEAL
14091
12/12/2016
B. BUCK
ENGINEER
CHARLES HUNT
DocuSigned by:
Erick Charles Hunt
2F15C8978A8EAC

ETHERILL ENGINEERING
1223 Jones Franklin Rd.
Raleigh, N.C. 27606
Bus: 919 851 8077
Fax: 919 851 8107
LICENSE NO. F-0377

STATE OF NORTH CAROLINA
DEPARTMENT OF TRANSPORTATION
RALEIGH

SUPERSTRUCTURE BILL OF MATERIAL

REVISIONS

NO.	BY:	DATE:	NO.	BY:	DATE:
1			3		
2			4		

SHEET NO. S01-22
TOTAL SHEETS 34

DRAWN BY : G.M. GILLAND DATE : 12-15
CHECKED BY : D. HODGE DATE : 1-16

DOCUMENT NOT CONSIDERED FINAL UNLESS ALL SIGNATURES COMPLETED