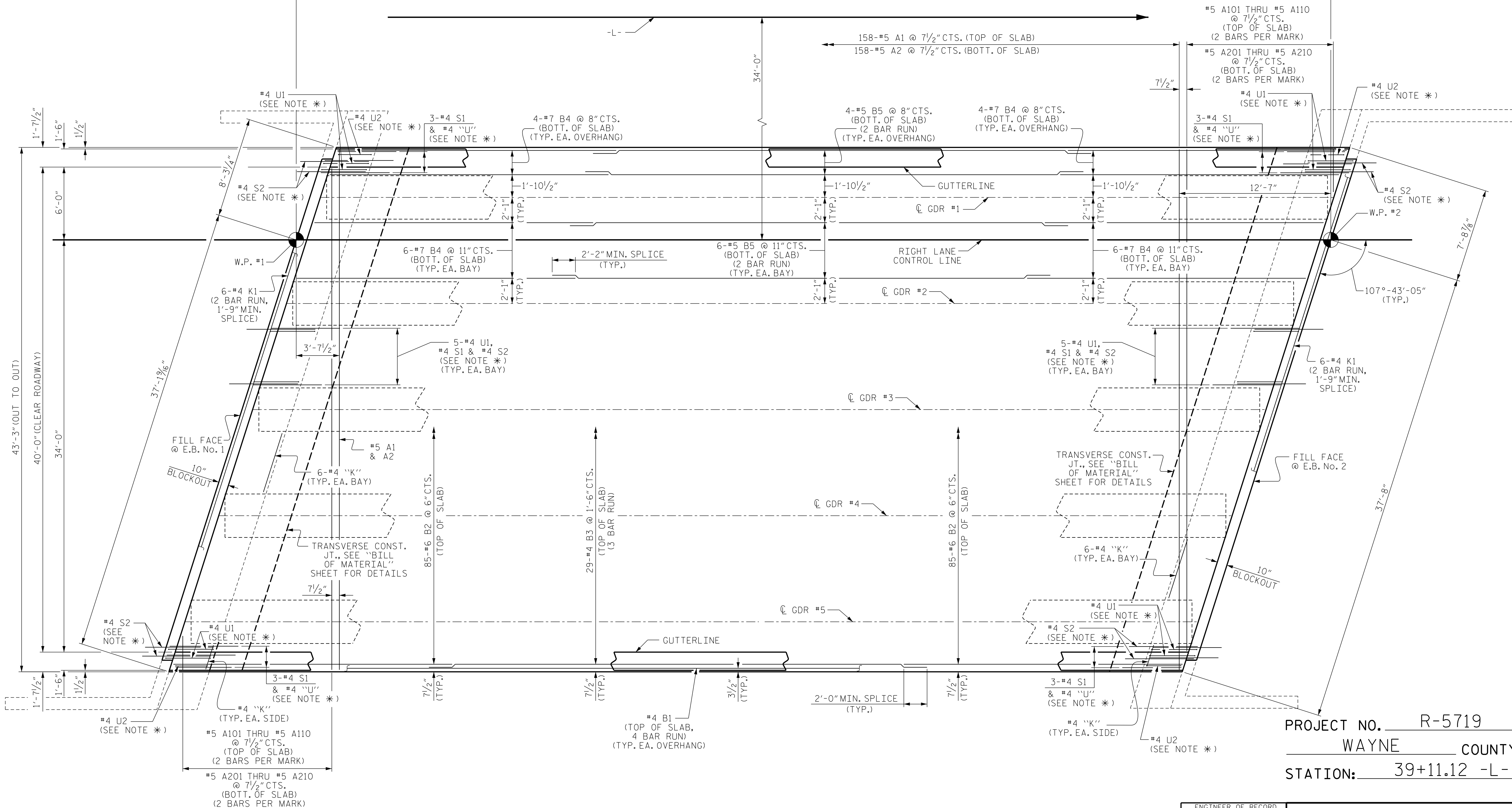


114'-4" (W.P. #1 TO W.P. #2)

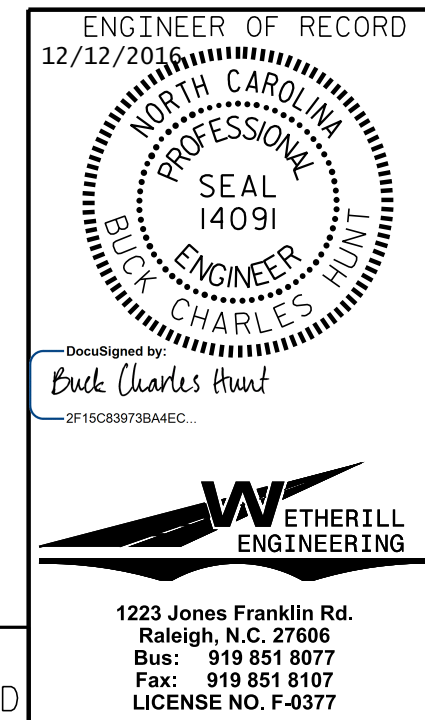


PROJECT NO. R-5719
 WAYNE COUNTY
 STATION: 39+11.12 -L-

PLAN OF SPAN A

FOR DETAILS OF INTERMEDIATE DIAPHRAGMS, SEE "PRESTRESSED CONCRETE GIRDER" SHEET.
 FOR CONCRETE BARRIER RAIL DETAILS AND REINFORCING STEEL, SEE "CONCRETE BARRIER RAIL" SHEETS.

* THESE BARS ARE TO MATCH SPACING OF THE #4 V1 BARS IN END BENT.



STATE OF NORTH CAROLINA
 DEPARTMENT OF TRANSPORTATION
 RALEIGH
 SUPERSTRUCTURE
 PLAN OF SPAN
 (RIGHT LANE)

REVISIONS						SHEET NO.
NO.	BY:	DATE:	NO.	BY:	DATE:	TOTAL SHEETS
1			3			26
2			4			

DRAWN BY : D. HODGE DATE : 1/16
 CHECKED BY : G.M. GILLAND DATE : 2/16

DOCUMENT NOT CONSIDERED FINAL
 UNLESS ALL SIGNATURES COMPLETED

P:\2015\A-5719\Structures\DWG\Right Lane\A-5719_RT_PS_WE.dgn
 12/16/2016 1:51:47 PM