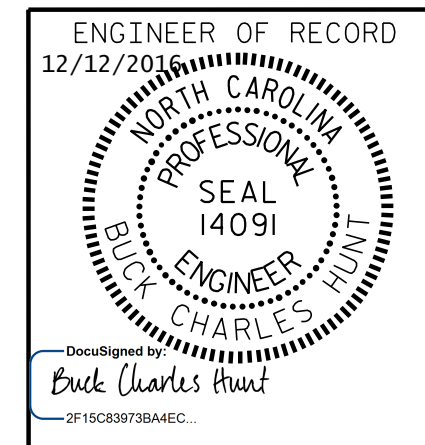


PROJECT NO. R-5719  
WAYNE COUNTY  
STATION: 39+11.12 -L-

**PLAN OF SPAN A**

FOR DETAILS OF INTERMEDIATE DIAPHRAGMS, SEE "PRESTRESSED CONCRETE GIRDER" SHEET.  
FOR CONCRETE BARRIER RAIL DETAILS AND REINFORCING STEEL, SEE "CONCRETE BARRIER RAIL" SHEETS.

\* THESE BARS ARE TO MATCH SPACING OF THE #4 V1 BARS IN END BENT.



ETHERILL ENGINEERING  
1223 Jones Franklin Rd.  
Raleigh, N.C. 27606  
Bus: 919 851 8077  
Fax: 919 851 8107  
LICENSE NO. F-0377

STATE OF NORTH CAROLINA DEPARTMENT OF TRANSPORTATION RALEIGH					
SUPERSTRUCTURE PLAN OF SPAN (LEFT LANE)					
REVISIONS					
NO.	BY:	DATE:	NO.	BY:	DATE:
1			3		
2			4		
SHEET NO. S01-7					TOTAL SHEETS 26

P:\2015\A-57 19\Structures\DWG\Left Lane\A-57 19.LT -PS.WE I.dgn  
 12/16/2016 12:51:50 PM

DRAWN BY: D. HODGE DATE: 1/16  
CHECKED BY: G.M. GILLAND DATE: 2/16

DOCUMENT NOT CONSIDERED FINAL  
UNLESS ALL SIGNATURES COMPLETED