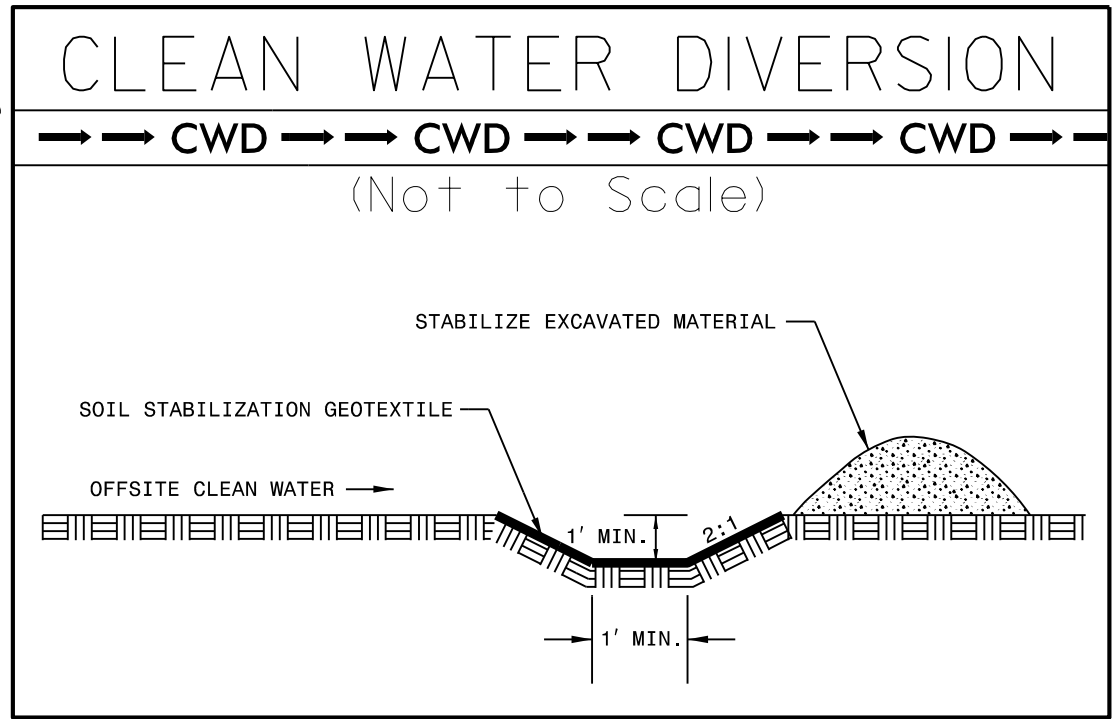
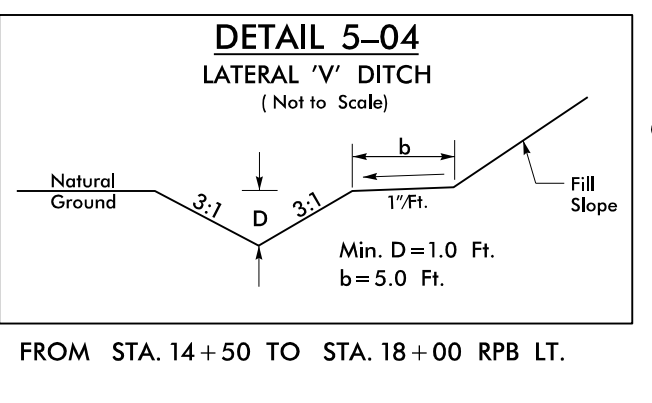
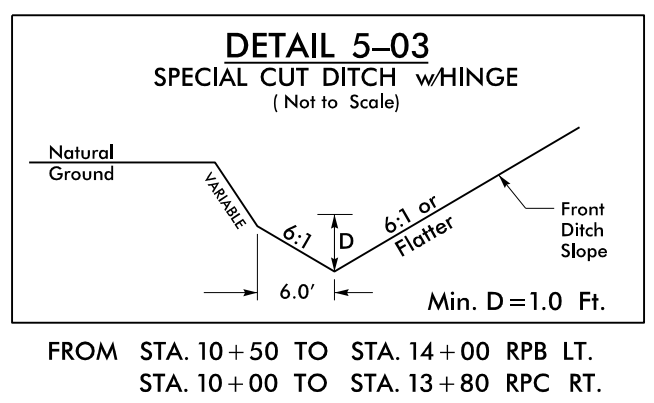


PROJECT REFERENCE NO.	SHEET NO.
R-5719	EC-12/CONST.05
RW SHEET NO.	05
ROADWAY DESIGN ENGINEER	HYDRAULICS ENGINEER

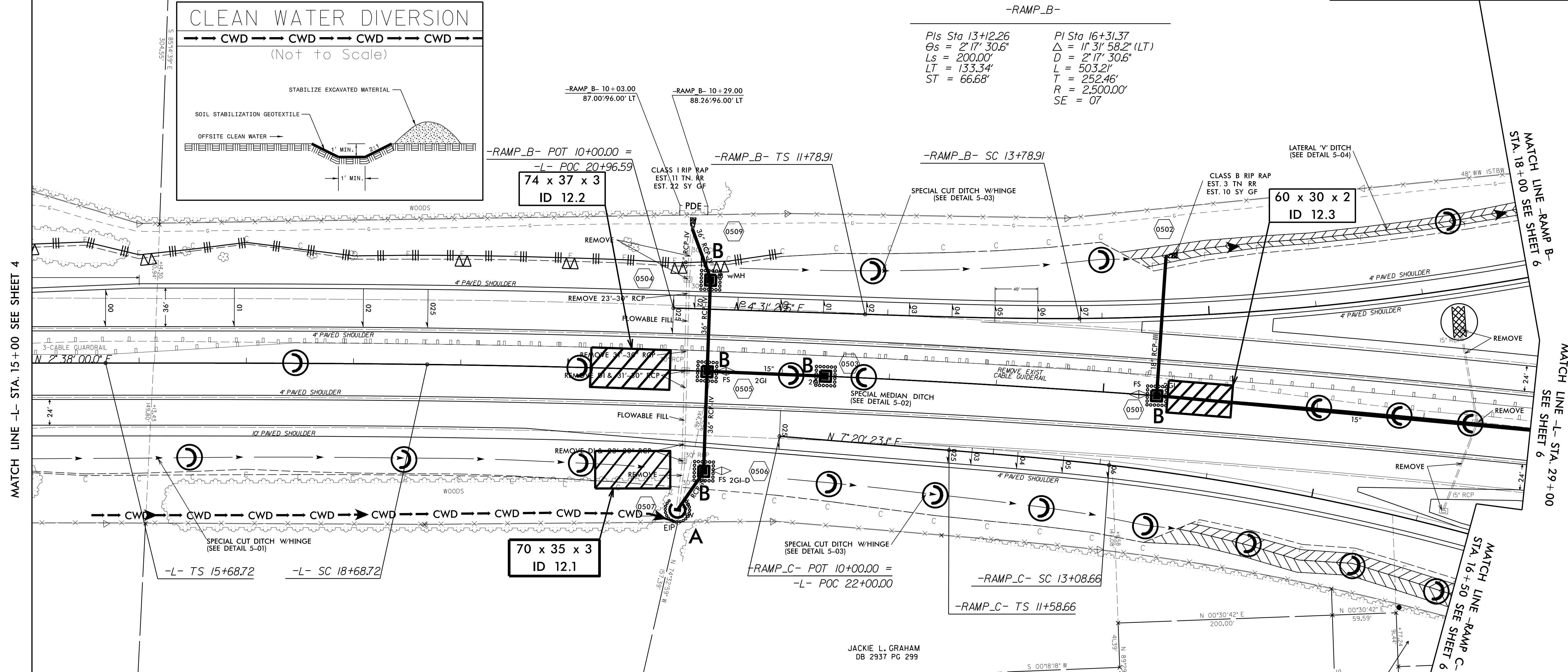
NOTE:
 SEE SHEETS 11,12,13 FOR -L- RT PROFILE
 SEE SHEETS 13,14,15 FOR -L- LT PROFILE
 SEE SHEET 17 FOR -RAMP_B- PROFILE
 SEE SHEET 18 FOR -RAMP_C- PROFILE

-L-
 Pls Sta 17+68.72 PI Sta 24+70.95
 $\Theta_s = 0^\circ 45' 00.0''$ $\Delta = 6^\circ 01' 00.2''$ (RT)
 $L_s = 300.00'$ $D = 0^\circ 30' 00.0''$
 $LT = 200.00'$ $L = 1,203.34'$
 $ST = 100.00'$ $T = 602.23'$
 $R = 11,459.16'$

1
 MARGARET K. PRICE
 DB 085E PG 663



-RAMP_B-
 Pls Sta 13+12.26 PI Sta 16+31.37
 $\Theta_s = 2^\circ 17' 30.6''$ $\Delta = 1^\circ 31' 58.2''$ (LT)
 $L_s = 200.00'$ $D = 2^\circ 17' 30.6''$
 $LT = 133.34'$ $L = 503.21'$
 $ST = 66.68'$ $T = 252.46'$
 $R = 2,500.00'$
 $SE = 07$



74 x 37 x 3
 ID 12.2

60 x 30 x 2
 ID 12.3

70 x 35 x 3
 ID 12.1

JACKIE L. GRAHAM
 DB 2937 PG 299

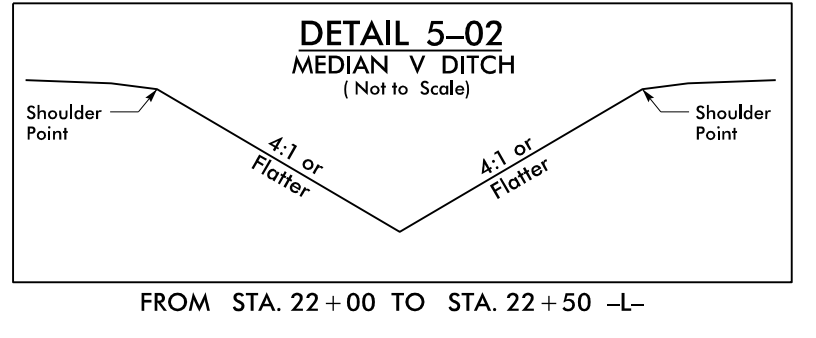
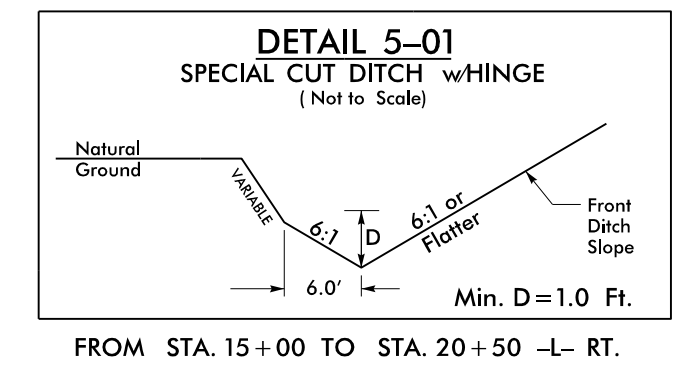
JACKIE L. GRAHAM
 &
 BRENDA P. GRAHAM
 DB 1244 PG 174
 PC F PG 130

MARGARET K. PRICE
 DB 085E PG 663

KERMIT SHELTON PRICE
 CAROL PRICE KALEEL
 DB 1619 PG 663

MARGARET K. PRICE
 DB 085E PG 663
 PC M SLIDE 78J

-RAMP_C-
 Pls Sta 12+58.67 PI Sta 16+46.65
 $\Theta_s = 1^\circ 52' 30.0''$ $\Delta = 16^\circ 46' 42.7''$ (RT)
 $L_s = 150.00'$ $D = 2^\circ 30' 00.0''$
 $LT = 100.00'$ $L = 671.14'$
 $ST = 50.00'$ $T = 337.99'$
 $R = 2,291.83'$
 $SE = 06$



REVISIONS

8/17/99
 8/17/2017
 8/21/2017 AM
 8/21/2015 R-5719 Location: Control Plans sheets 16519, EC, PSH12.dgn