

5/28/99

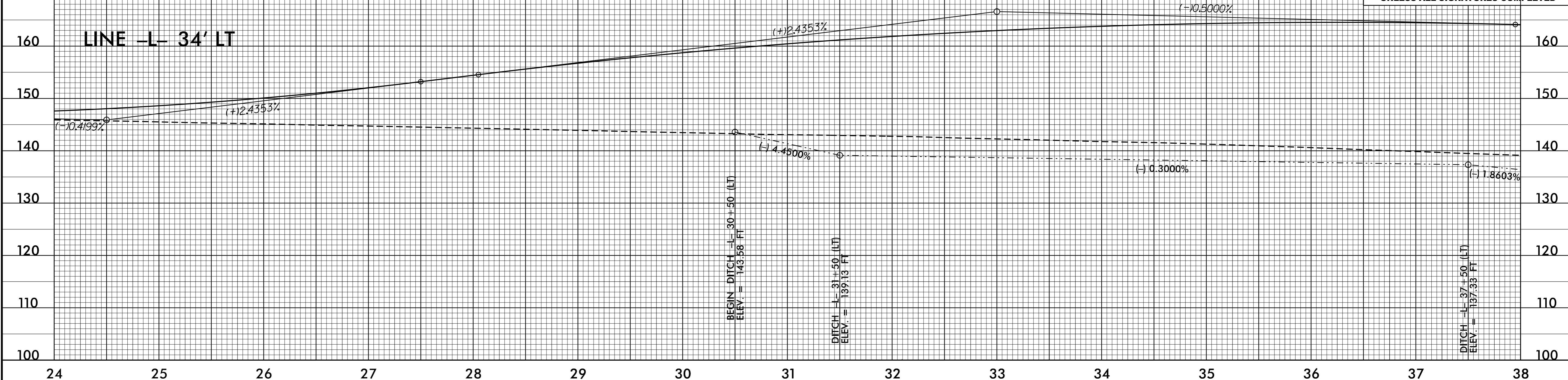
-L-  
PI = 24+50.00  
EL = 145.90'  
VC = 600.00'  
K = 210

-L-  
PI = 33+00.00  
EL = 166.60'  
VC = 990.00'  
K = 337

DITCH LEGEND	
LEFT DITCH	-----
MEDIAN DITCH	-----
RIGHT DITCH	-----

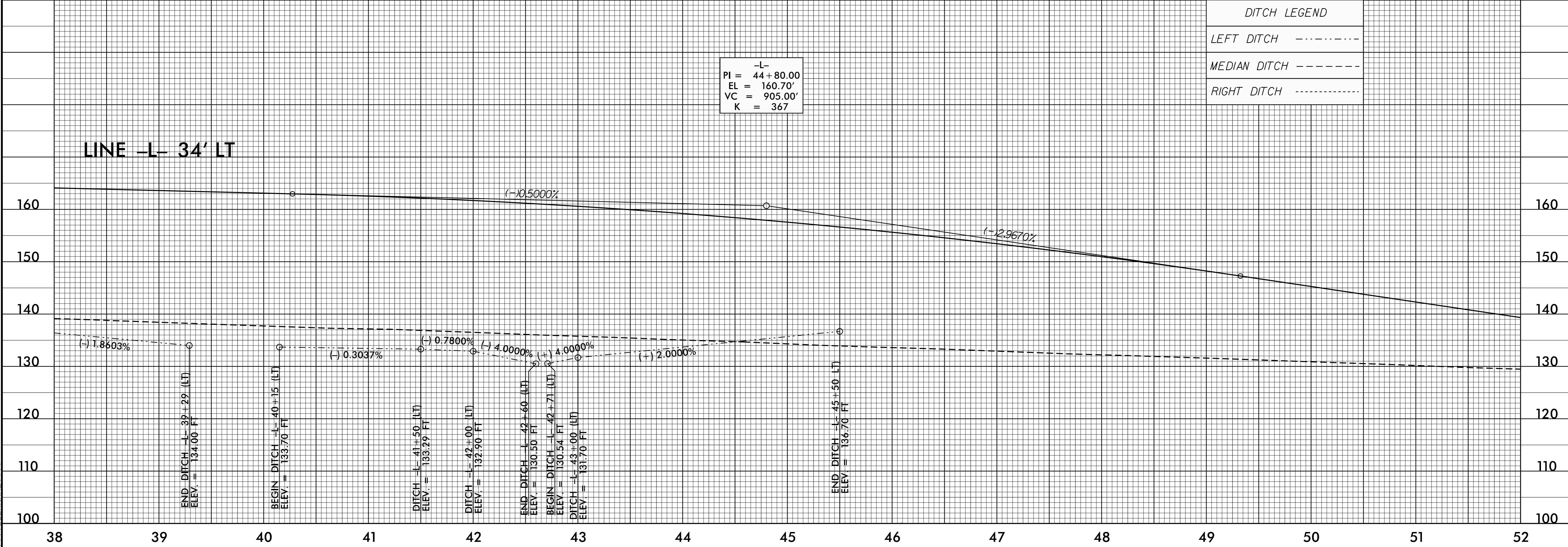
PROJECT REFERENCE NO. R-5719	SHEET NO. 14
ROADWAY DESIGN ENGINEER 4/6/2017 JERRY P. FIG	HYDRAULICS ENGINEER 4/7/2017 JAMES C. DAVIS
SEAL 18537	SEAL 18462

DOCUMENT NOT CONSIDERED FINAL  
UNLESS ALL SIGNATURES COMPLETED



-L-  
PI = 44+80.00  
EL = 160.70'  
VC = 905.00'  
K = 367

DITCH LEGEND	
LEFT DITCH	-----
MEDIAN DITCH	-----
RIGHT DITCH	-----



06-APR-2017 13:37  
R:\Roadway\PCo\R5719\_DDC4\_PSH\_PRO.dgn  
JERRY P. FIG