

PROJECT REFERENCE NO. R-5719	SHEET NO. 08
RW SHEET NO. 08	
ROADWAY DESIGN ENGINEER 4/6/2017 SEAL 18537 FRY P PAGE	HYDRAULICS ENGINEER 4/7/2017 SEAL 18462 JAMES C. DAVIS
DOCUMENT NOT CONSIDERED FINAL UNLESS ALL SIGNATURES COMPLETED	

NOTE:
SEE SHEETS 11, 12, 13 FOR -L- RT PROFILE
SEE SHEETS 13, 14, 15 FOR -L- LT PROFILE

NAD 83/NSRS 2007

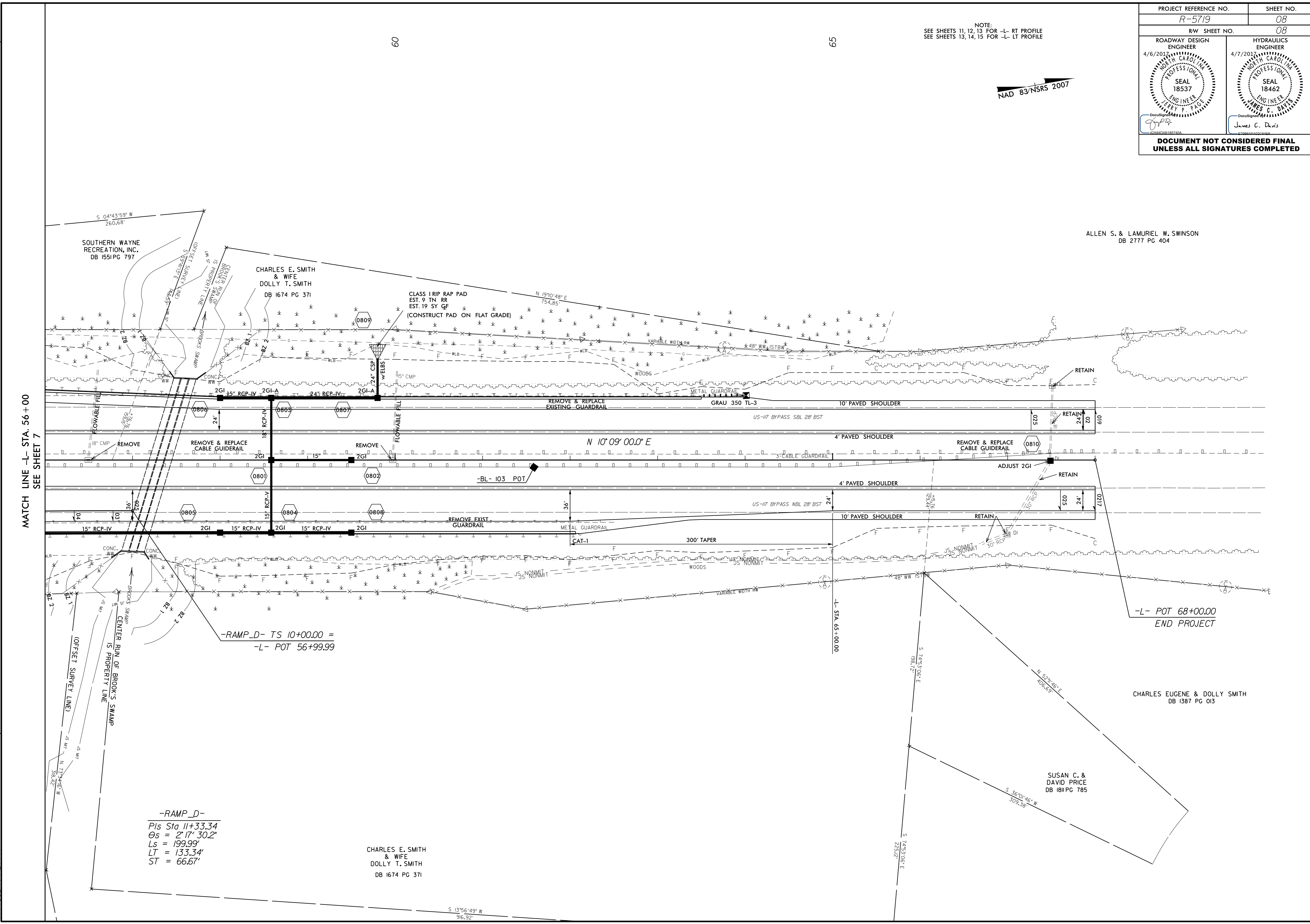
ALLEN S. & LAMURIEL W. SWINSON
DB 2777 PG 404

CHARLES EUGENE & DOLLY SMITH
DB 1387 PG 013

SUSAN C. & DAVID PRICE
DB 1811 PG 785

CHARLES E. SMITH & WIFE
DOLLY T. SMITH
DB 1674 PG 371

-RAMP_D-
Pls Sta 11+33.34
Gs = 2' 17' 30.2"
Ls = 199.99'
LT = 133.34'
ST = 66.67'



REVISIONS

MATCH LINE -L- STA. 56+00
SEE SHEET 7

-L- POT 68+00.00
END PROJECT

-RAMP_D- TS 10+00.00 =
-L- POT 56+99.99

8/17/99
 06-APR-2017 14:57
 R:\Roadway\Projects\15719_DDC4_PSH_08.dgn
 \$\$\$\$USERNAME\$\$\$\$