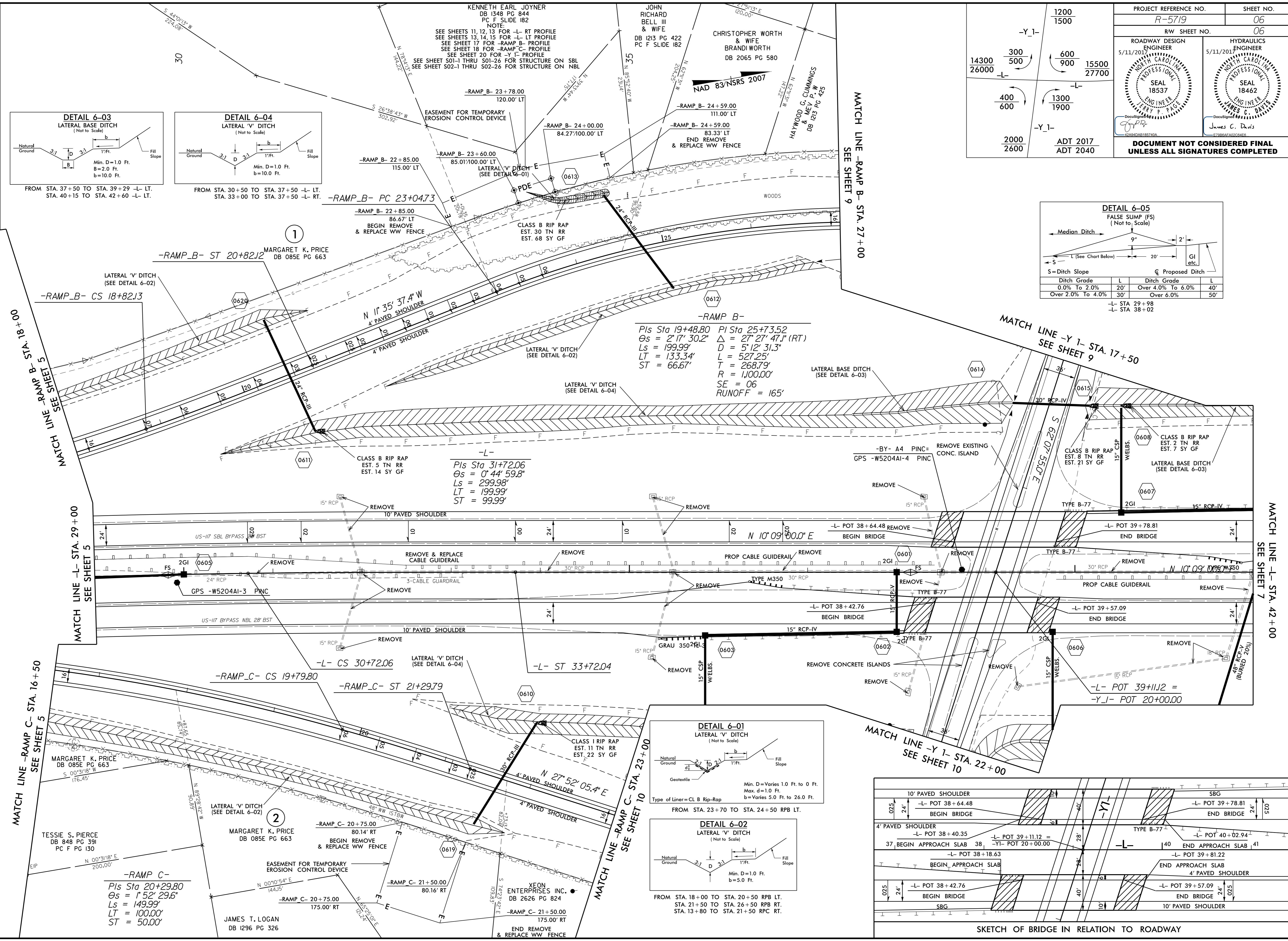
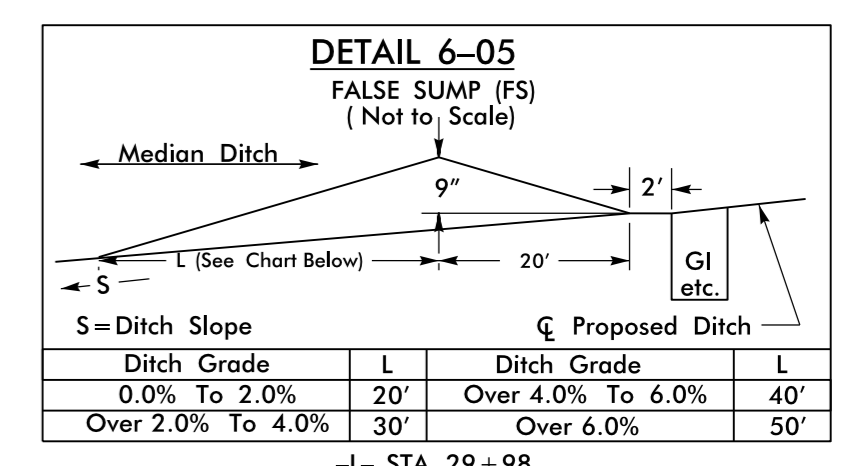
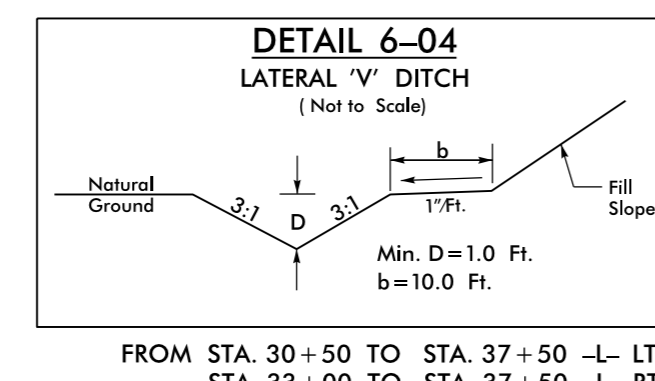
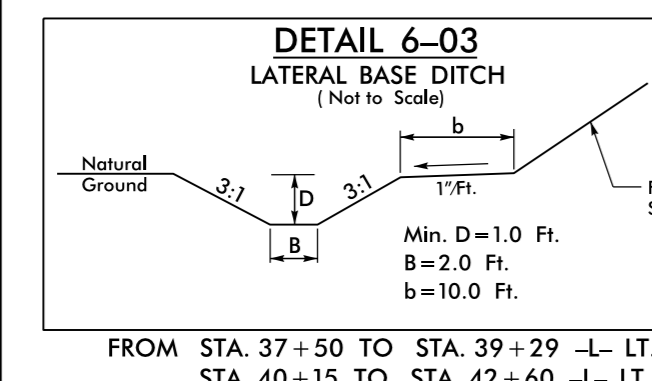


8/17/99

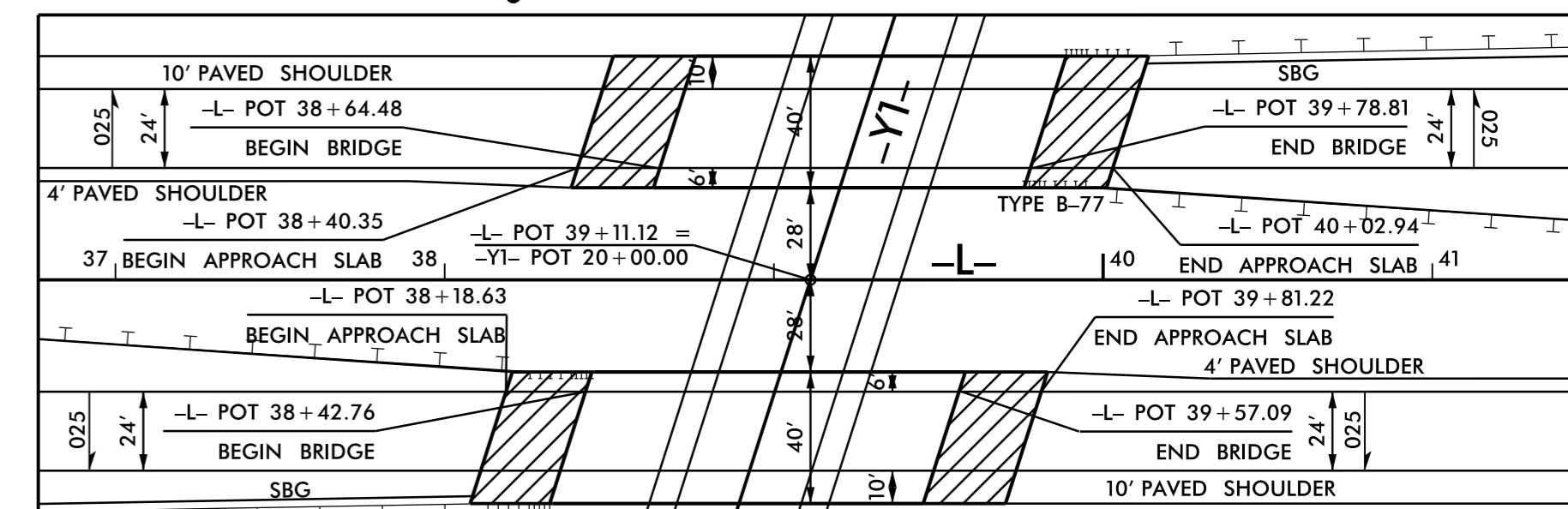
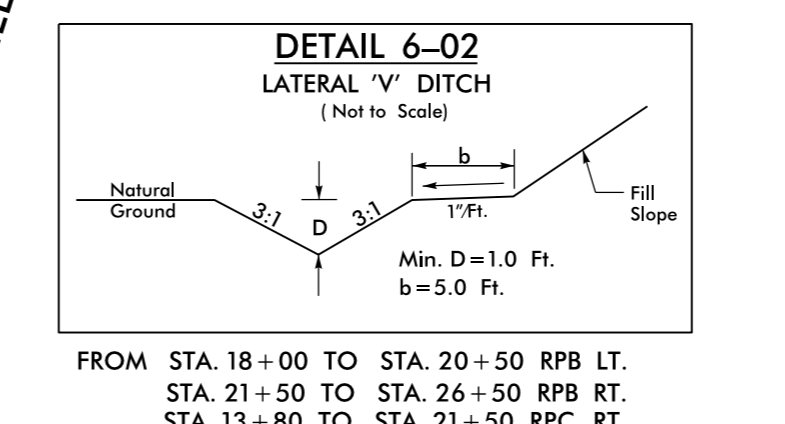
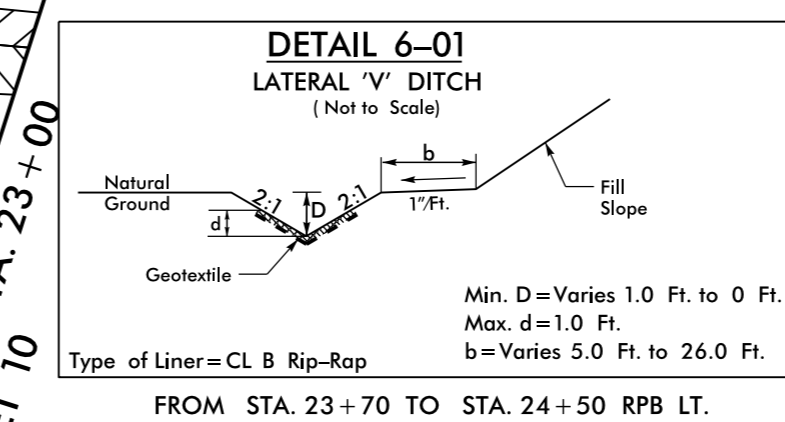
PROJECT REFERENCE NO.		SHEET NO.	
R-5719		06	
RW SHEET NO.		06	
ROADWAY DESIGN ENGINEER		HYDRAULICS ENGINEER	
5/11/2017		5/11/2017	
SEAL 18537		SEAL 18462	
JAMES C. DAVIS		JAMES C. DAVIS	
DOCUMENT NOT CONSIDERED FINAL UNLESS ALL SIGNATURES COMPLETED			

1200	1500	-Y-1-
14300	300	600
26000	500	900
		15500
		27700
400	1300	-L-
600	1900	
2000	-Y-1-	
2600		ADT 2017
		ADT 2040



Pls Sta 19+48.80 PI Sta 25+73.52
 $\Theta_s = 2^\circ 17' 30.2''$ $\Delta = 27^\circ 27' 47.1''$ (RT)
 $L_s = 199.99'$ $D = 5^\circ 12' 31.3''$
 $LT = 133.34'$ $L = 527.25'$
 $ST = 66.67'$ $T = 268.79'$
 $R = 1,000.00'$
 $SE = 06$
 $RUNOFF = 165'$

-L-
 Pls Sta 31+72.06
 $\Theta_s = 0^\circ 44' 59.8''$
 $L_s = 299.98'$
 $LT = 199.99'$
 $ST = 99.99'$



REVISIONS

11-MAY-2017 14:26 R:\Roadway\PC\15719_DDC4_PSH_06.dgn