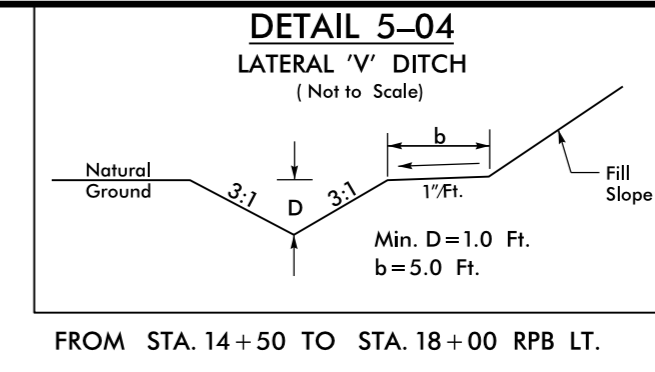
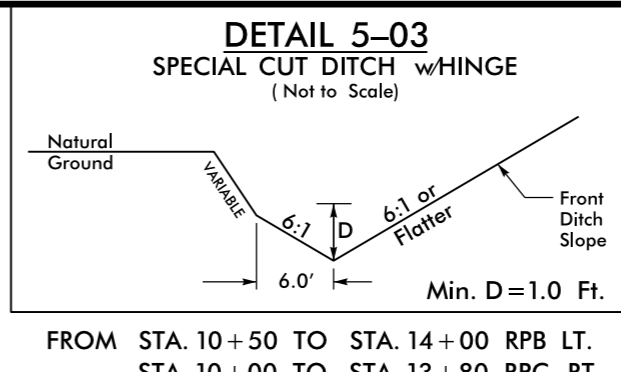
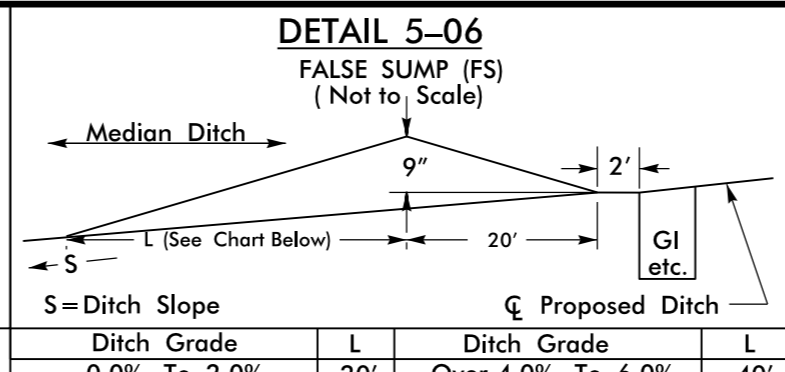
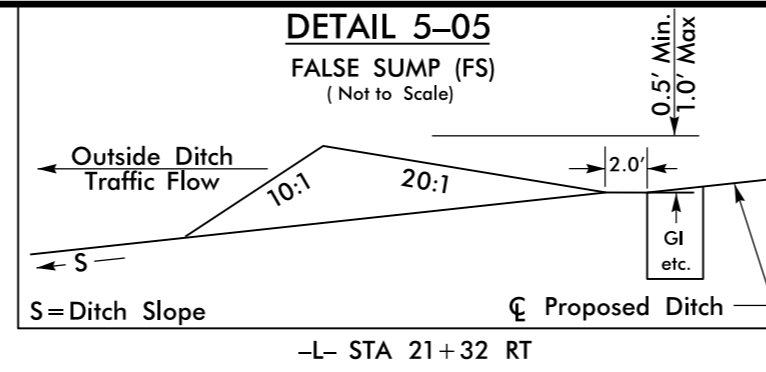


8/17/99

NOTE:
SEE SHEETS 11, 12, 13 FOR -L- RT PROFILE
SEE SHEETS 13, 14, 15 FOR -L- LT PROFILE
SEE SHEET 17 FOR -RAMP_B- PROFILE
SEE SHEET 18 FOR -RAMP_C- PROFILE



PROJECT REFERENCE NO. R-5719	SHEET NO. 05
R/W SHEET NO. 05	HYDRAULICS ENGINEER
ROADWAY DESIGN ENGINEER 5/11/2017 SEAL 18537	HYDRAULICS ENGINEER 5/11/2017 SEAL 18462
James C. Davis	James C. Davis

DOCUMENT NOT CONSIDERED FINAL UNLESS ALL SIGNATURES COMPLETED

-L-
 Pls Sta 17+68.72 Pls Sta 24+70.95
 $\Theta_s = 0^\circ 45' 00.0''$ $\Delta = 6^\circ 01' 00.2''$ (RT)
 $L_s = 300.00'$ $D = 0^\circ 30' 00.0''$
 $LT = 200.00'$ $L = 1203.34'$
 $ST = 100.00'$ $T = 602.23'$
 $R = 11,459.16'$

1
 MARGARET K. PRICE
 DB 085E PG 663

-RAMP_B-
 Pls Sta 13+12.26 Pls Sta 16+31.37
 $\Theta_s = 2^\circ 17' 30.6''$ $\Delta = 1^\circ 31' 58.2''$ (LT)
 $L_s = 200.00'$ $D = 2^\circ 17' 30.6''$
 $LT = 133.34'$ $L = 503.21'$
 $ST = 66.68'$ $T = 252.46'$
 $R = 2,500.00'$
 $SE = 07$

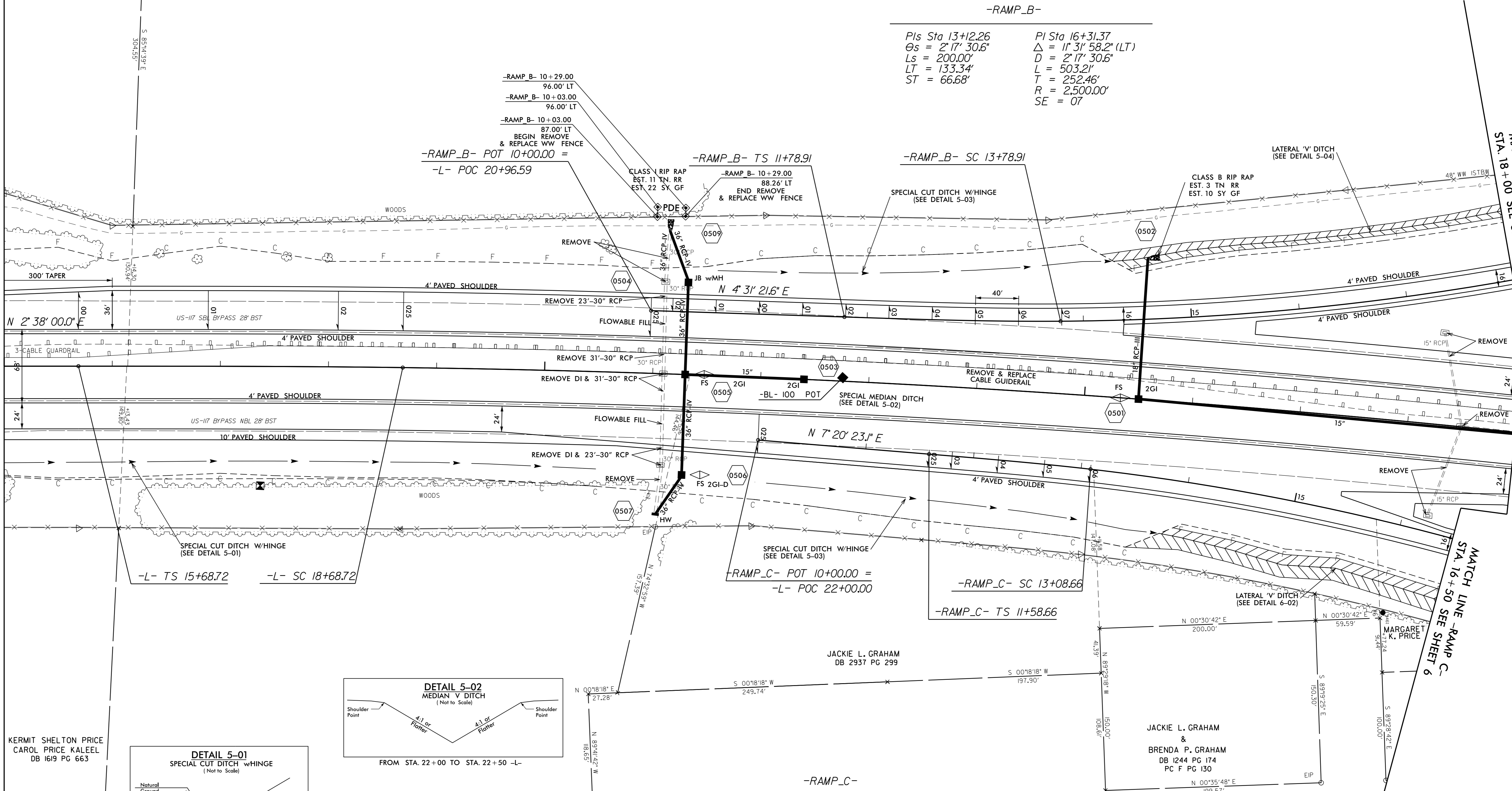
-RAMP_C-
 Pls Sta 12+58.67 Pls Sta 16+46.65
 $\Theta_s = 1^\circ 52' 30.0''$ $\Delta = 16^\circ 46' 42.7''$ (RT)
 $L_s = 150.00'$ $D = 2^\circ 30' 00.0''$
 $LT = 100.01'$ $L = 671.14'$
 $ST = 50.01'$ $T = 337.99'$
 $R = 2,291.83'$
 $SE = 06$

MATCH LINE -L- STA. 15+00 SEE SHEET 4

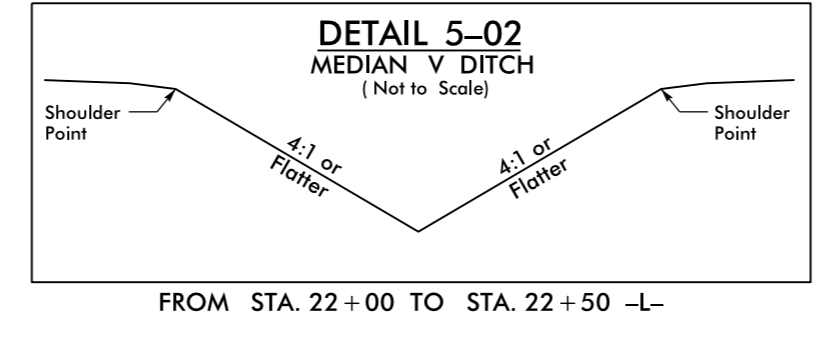
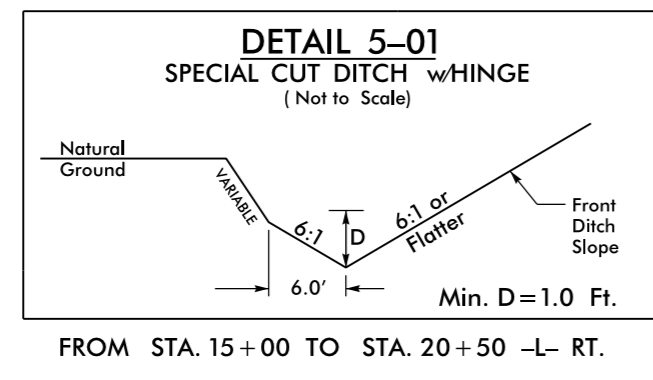
MATCH LINE -RAMP_B- STA. 18+00 SEE SHEET 6

MATCH LINE -L- STA. 29+00 SEE SHEET 6

MATCH LINE -RAMP_C- STA. 16+50 SEE SHEET 6



KERMIT SHELTON PRICE
 CAROL PRICE KALEEL
 DB 1619 PG 663



MARGARET K. PRICE
 DB 085E PG 663
 PC M SLIDE 78J

JACKIE L. GRAHAM
 DB 2937 PG 299

JACKIE L. GRAHAM
 &
 BRENDA P. GRAHAM
 DB 1244 PG 174
 PC F PG 130

REVISIONS

11-MAY-2017 14:25
 R:\Roadway\PC\N5719_DDC4_PSH_05.dgn
 \$\$\$\$ USER:RPRICE \$\$\$