

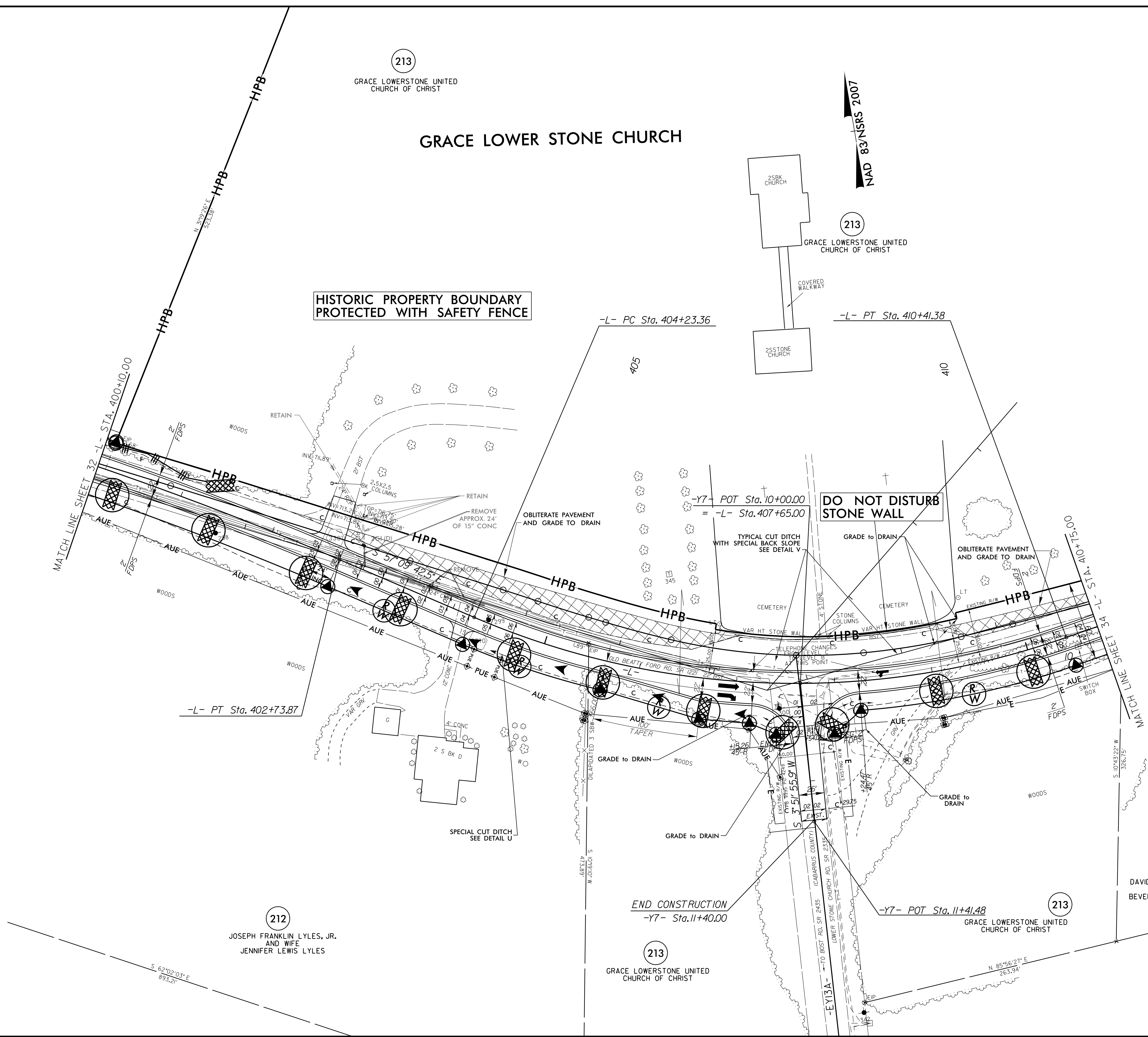
PROJECT REFERENCE NO.	SHEET NO.
W-5313	EC-64/CONST.33
RW SHEET NO.	
ROADWAY DESIGN ENGINEER	HYDRAULICS ENGINEER

GRACE LOWER STONE CHURCH

HISTORIC PROPERTY BOUNDARY PROTECTED WITH SAFETY FENCE

DO NOT DISTURB STONE WALL

02-MAY-2016 13:55 D:\p1\proj\w-5313.ec-psht-sh33.dgn
 P:\p1\proj\w-5313.ec-psht-sh33.dgn
 P:\p1\proj\w-5313.ec-psht-sh33.dgn



212 JOSEPH FRANKLIN LYLES, JR. AND WIFE JENNIFER LEWIS LYLES

214 DAVID CHARLES BARTLETT AND WIFE BEVERLEY ANNE BARTLETT

213 GRACE LOWER STONE UNITED CHURCH OF CHRIST

213 GRACE LOWER STONE UNITED CHURCH OF CHRIST

PAVEMENT TO BE OBLITERATED