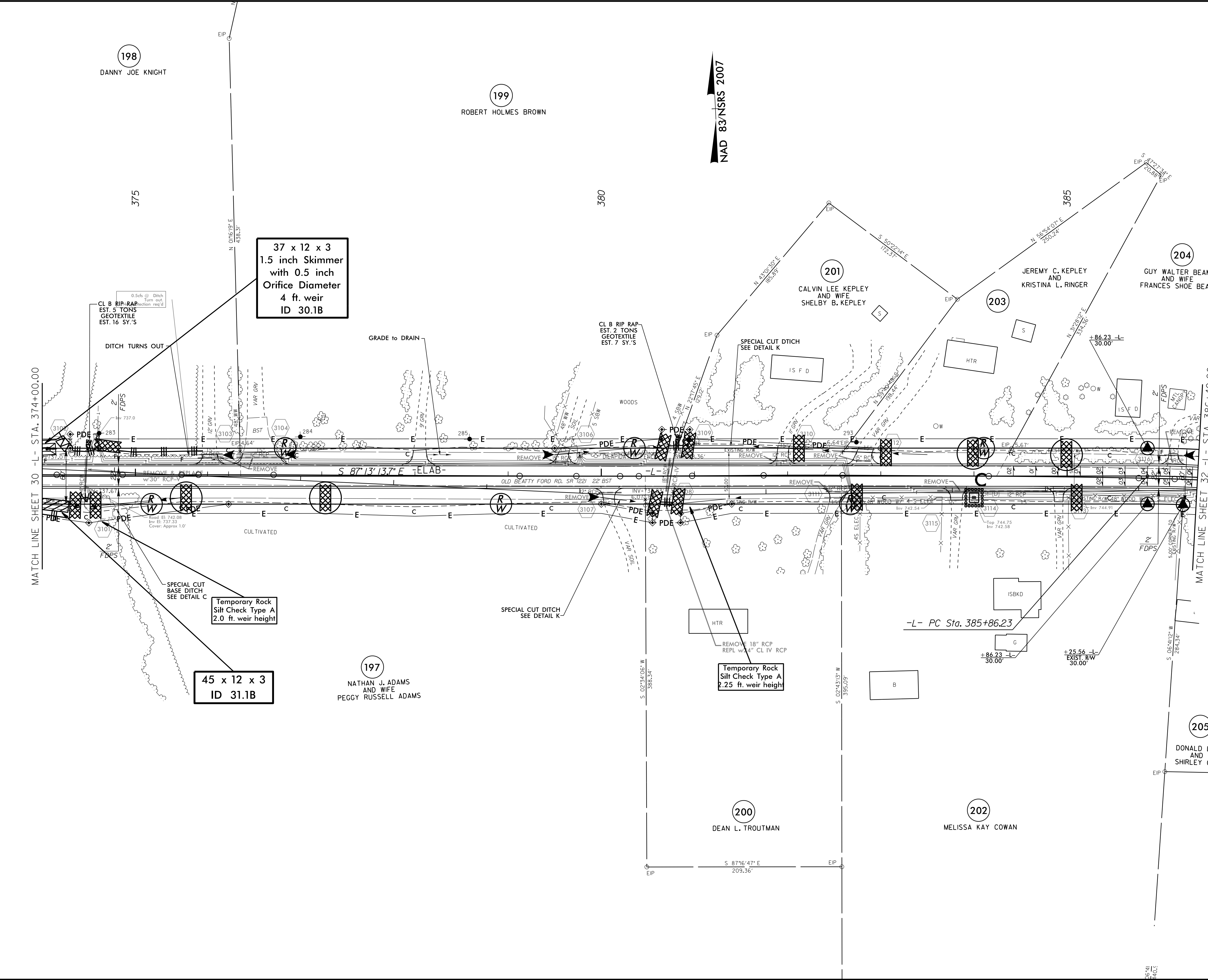


PROJECT REFERENCE NO.	SHEET NO.
W-5313	EC-62/CONST.31
RW SHEET NO.	
ROADWAY DESIGN ENGINEER	HYDRAULICS ENGINEER



37 x 12 x 3
1.5 inch Skimmer
with 0.5 inch
Orifice Diameter
4 ft. weir
ID 30.1B

45 x 12 x 3
ID 31.1B

Temporary Rock
Silt Check Type A
2.0 ft. weir height

Temporary Rock
Silt Check Type A
2.25 ft. weir height

02-MAY-2016 13:45
 C:\Users\jg\Documents\Projects\W-5313\EC-62\psh...sh31.dgn
 jg