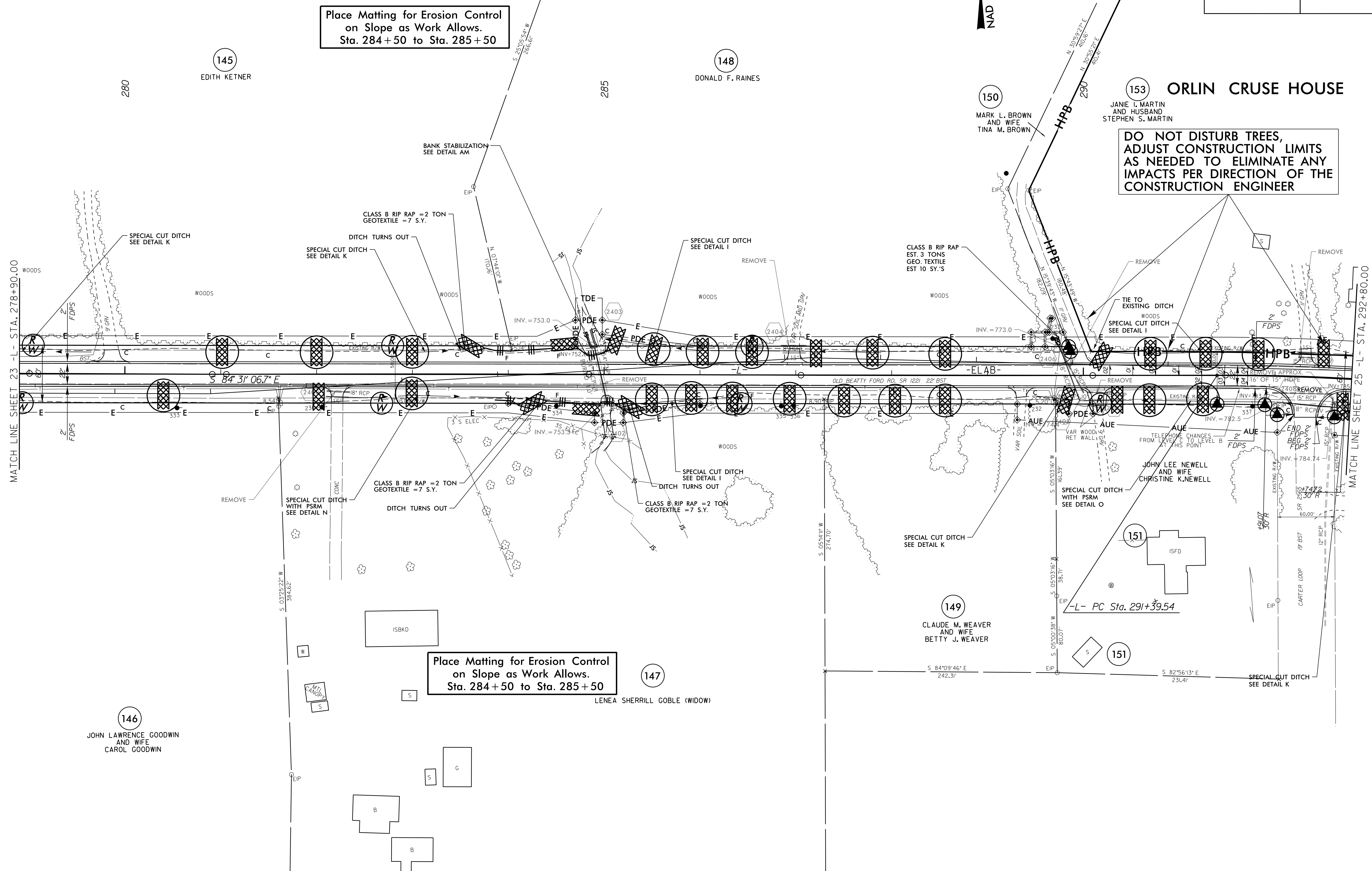


|                         |                     |
|-------------------------|---------------------|
| PROJECT REFERENCE NO.   | SHEET NO.           |
| W-5313                  | EC-55/CONST.24      |
| RW SHEET NO.            |                     |
| ROADWAY DESIGN ENGINEER | HYDRAULICS ENGINEER |

NAD 83/NSRS 2007

Place Matting for Erosion Control  
on Slope as Work Allows.  
Sta. 284+50 to Sta. 285+50

DO NOT DISTURB TREES,  
ADJUST CONSTRUCTION LIMITS  
AS NEEDED TO ELIMINATE ANY  
IMPACTS PER DIRECTION OF THE  
CONSTRUCTION ENGINEER



Place Matting for Erosion Control  
on Slope as Work Allows.  
Sta. 284+50 to Sta. 285+50

02-MAY-2016 10:51  
 C:\enviro\p\ec\w-5313.ec-psht-sh24.dgn  
 10/27/16 10:51 AM  
 10/27/16 10:51 AM