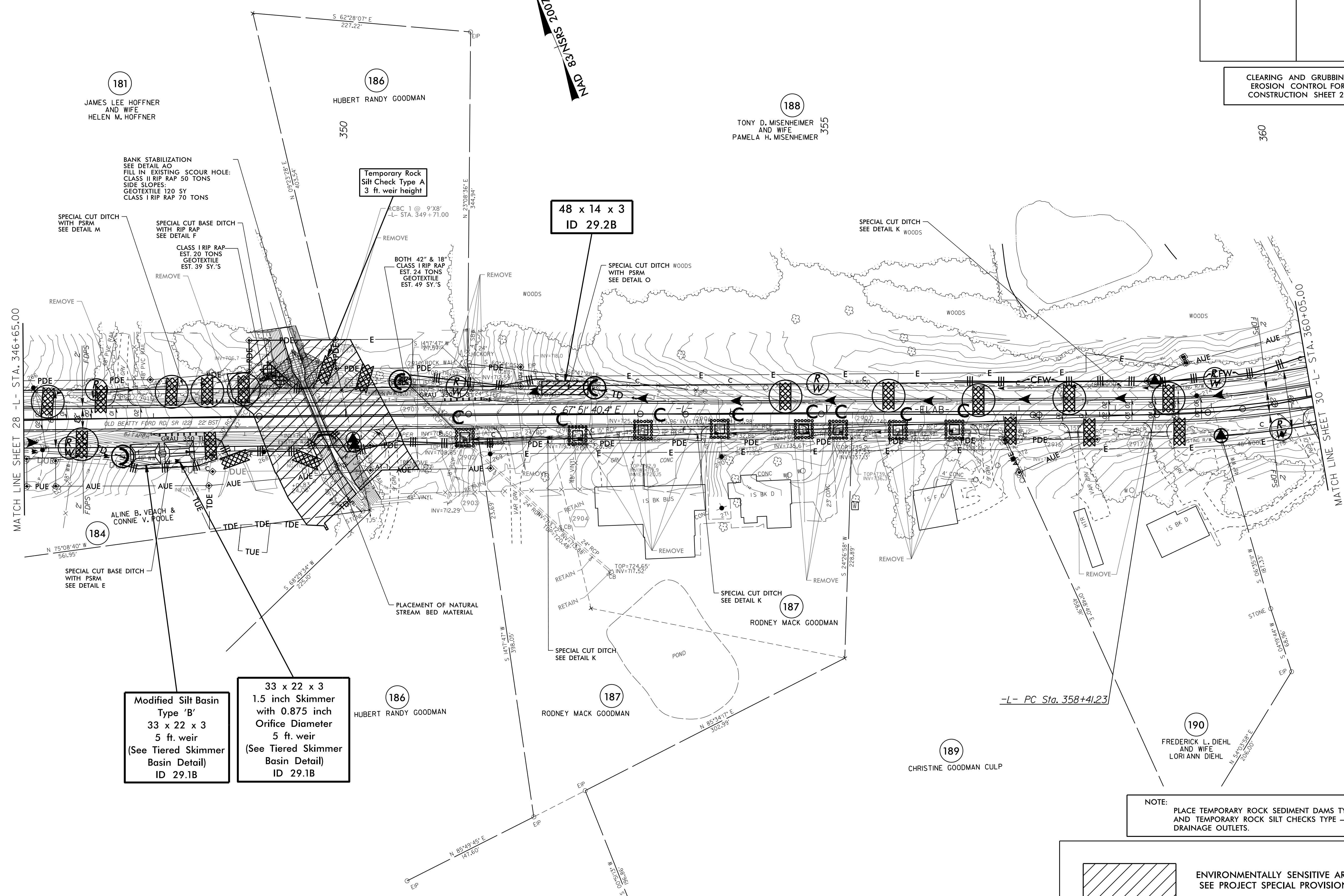


PROJECT REFERENCE NO. W-5313	SHEET NO. EC-29/CONST.29
RW SHEET NO.	
ROADWAY DESIGN ENGINEER	HYDRAULICS ENGINEER

CLEARING AND GRUBBING
EROSION CONTROL FOR
CONSTRUCTION SHEET 29



Modified Silt Basin
Type 'B'
33 x 22 x 3
5 ft. weir
(See Tiered Skimmer
Basin Detail)
ID 29.1B

33 x 22 x 3
1.5 inch Skimmer
with 0.875 inch
Orifice Diameter
5 ft. weir
(See Tiered Skimmer
Basin Detail)
ID 29.1B

48 x 14 x 3
ID 29.2B

Temporary Rock
Silt Check Type A
3 ft. weir height

NOTE:
PLACE TEMPORARY ROCK SEDIMENT DAMS TYPE - B
AND TEMPORARY ROCK SILT CHECKS TYPE - A AT
DRAINAGE OUTLETS.

 ENVIRONMENTALLY SENSITIVE AREA
SEE PROJECT SPECIAL PROVISIONS

02-MAY-2016 12:28
 C:\Users\jgoff\OneDrive\Documents\Projects\W-5313\EC-psht-sh29.dgn
 jgoff