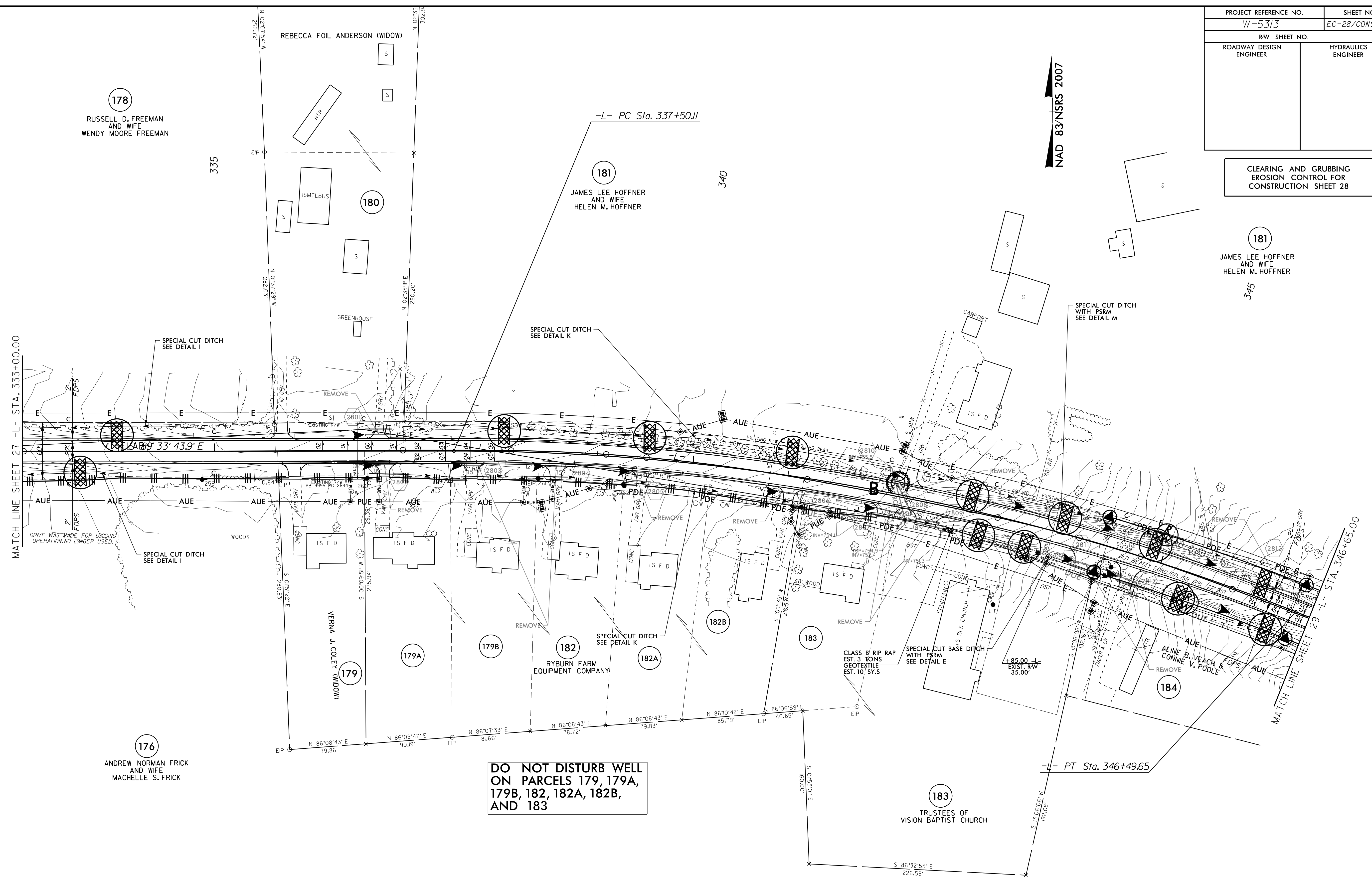


PROJECT REFERENCE NO.	SHEET NO.
W-5313	EC-28/CONST.28
RW SHEET NO.	
ROADWAY DESIGN ENGINEER	HYDRAULICS ENGINEER

CLEARING AND GRUBBING  
EROSION CONTROL FOR  
CONSTRUCTION SHEET 28

181  
JAMES LEE HOFFNER  
AND WIFE  
HELEN M. HOFFNER  
345

NAD 83/NSRS 2007



DO NOT DISTURB WELL  
ON PARCELS 179, 179A,  
179B, 182, 182A, 182B,  
AND 183

NOTE:  
PLACE TEMPORARY ROCK SEDIMENT DAMS TYPE - B  
AND TEMPORARY ROCK SILT CHECKS TYPE - A AT  
DRAINAGE OUTLETS.

92 MAY-2016 12:20 D:\s1\g1\w-5313.ec-psht.sh28.dgn  
P:\s1\g1\w-5313.ec-psht.sh28.dgn