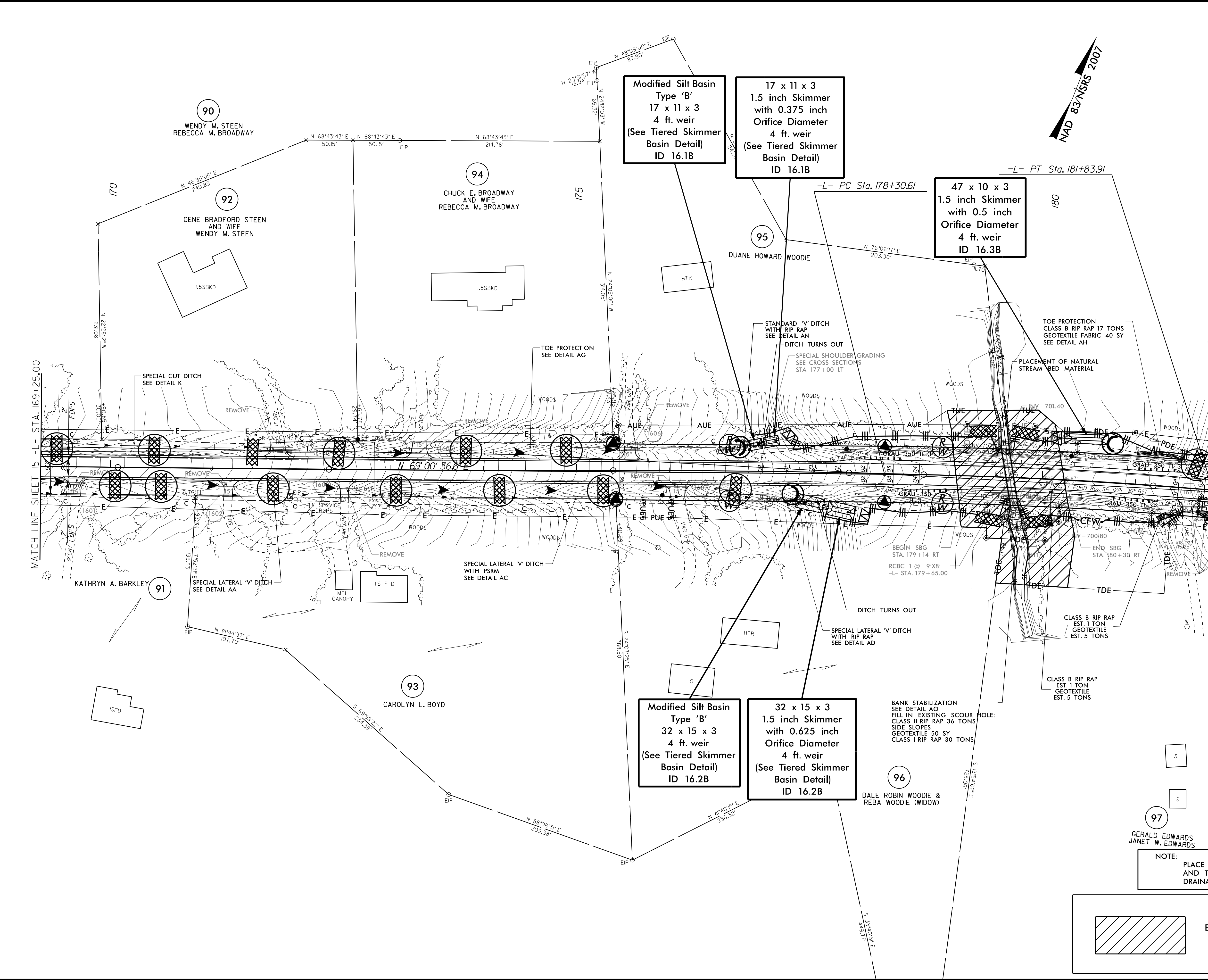


PROJECT REFERENCE NO.	SHEET NO.
W-5313	EC-16/CONST.16
RW SHEET NO.	
ROADWAY DESIGN ENGINEER	HYDRAULICS ENGINEER

CLEARING AND GRUBBING
EROSION CONTROL FOR
CONSTRUCTION SHEET 16



Modified Silt Basin
Type 'B'
17 x 11 x 3
1.5 inch Skimmer
with 0.375 inch
Orifice Diameter
4 ft. weir
(See Tiered Skimmer
Basin Detail)
ID 16.1B

17 x 11 x 3
1.5 inch Skimmer
with 0.375 inch
Orifice Diameter
4 ft. weir
(See Tiered Skimmer
Basin Detail)
ID 16.1B

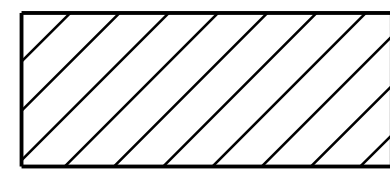
47 x 10 x 3
1.5 inch Skimmer
with 0.5 inch
Orifice Diameter
4 ft. weir
ID 16.3B

Modified Silt Basin
Type 'B'
32 x 15 x 3
1.5 inch Skimmer
with 0.625 inch
Orifice Diameter
4 ft. weir
(See Tiered Skimmer
Basin Detail)
ID 16.2B

32 x 15 x 3
1.5 inch Skimmer
with 0.625 inch
Orifice Diameter
4 ft. weir
(See Tiered Skimmer
Basin Detail)
ID 16.2B

BANK STABILIZATION
SEE DETAIL AO
FILL IN EXISTING SCOUR HOLE:
CLASS II RIP RAP 36 TONS
SIDE SLOPES:
GEOTEXTILE 50 SY
CLASS I RIP RAP 30 TONS

NOTE:
PLACE TEMPORARY ROCK SEDIMENT DAMS TYPE - B
AND TEMPORARY ROCK SILT CHECKS TYPE - A AT
DRAINAGE OUTLETS.



ENVIRONMENTALLY SENSITIVE AREA
SEE PROJECT SPECIAL PROVISIONS

23-APR-2016 15:25
C:\Users\psh\OneDrive\Documents\Projects\16\W-5313-EC-psh-sh16.dgn