

5/28/99

PROJECT REFERENCE NO. <b>W-5313</b>	SHEET NO. <b>49</b>
ROADWAY DESIGN ENGINEER NORTH CAROLINA PROFESSIONAL SEAL 024912 Kevin E. Moore	HYDRAULICS ENGINEER NORTH CAROLINA PROFESSIONAL SEAL 033246 Linda M. Johns
4/5/2017 Designed by Kevin E. Moore	4/7/2017 Designed by Linda M. Johns

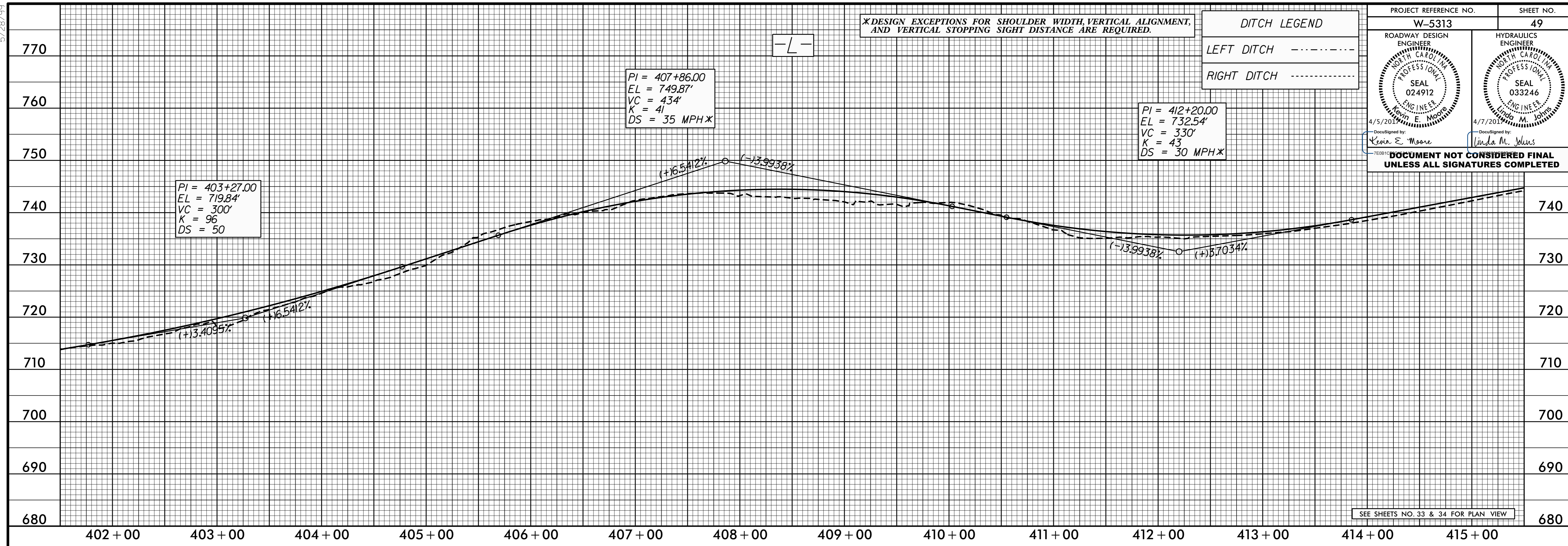
**DOCUMENT NOT CONSIDERED FINAL  
UNLESS ALL SIGNATURES COMPLETED**

\*DESIGN EXCEPTIONS FOR SHOULDER WIDTH, VERTICAL ALIGNMENT, AND VERTICAL STOPPING SIGHT DISTANCE ARE REQUIRED.

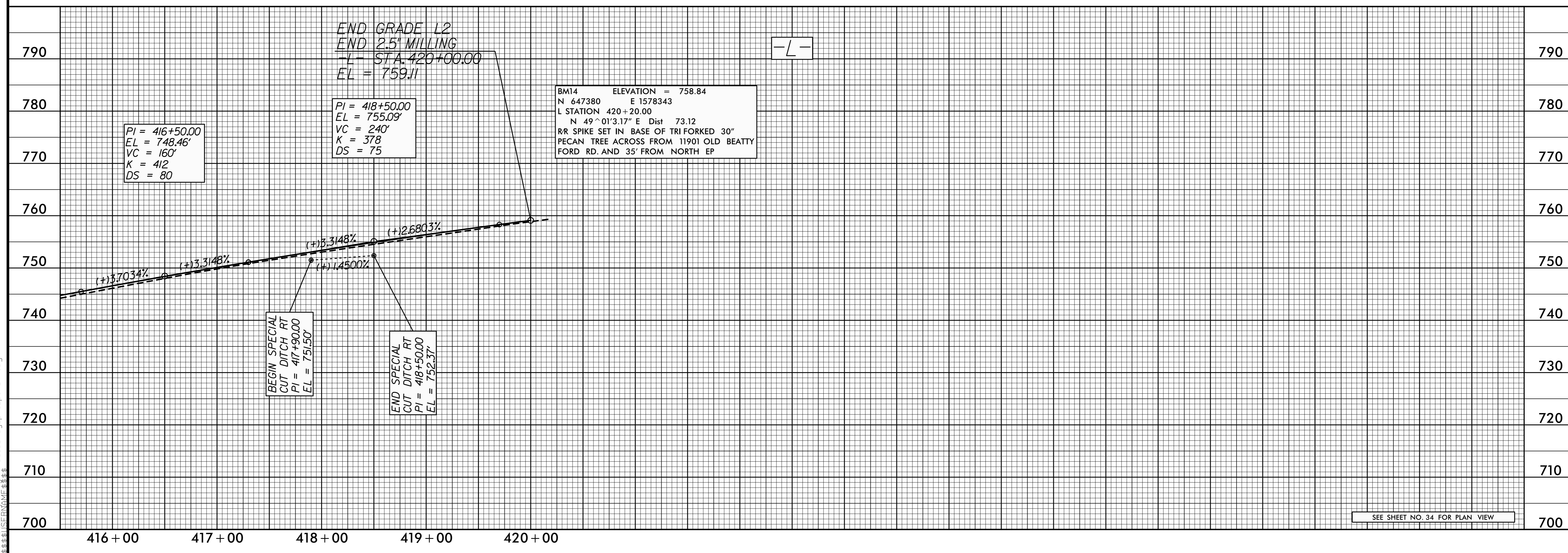
**DITCH LEGEND**

LEFT DITCH - - - - -

RIGHT DITCH - - - - -



SEE SHEETS NO. 33 & 34 FOR PLAN VIEW



SEE SHEET NO. 34 FOR PLAN VIEW

28-MAR-2017 14:27 W:\5313\_Rd\pfl.psh-49.dgn