

5/28/99

PROJECT REFERENCE NO. W-5313	SHEET NO. 47
ROADWAY DESIGN ENGINEER KIM E. MOORE SEAL 024912 4/5/2013	HYDRAULICS ENGINEER LINDA M. JOHNS SEAL 033246 4/7/2013

PIPE HYDRAULIC DATA
2912-2913 Sta. 348+86.00

DRAINAGE AREA	= 0.9	SQ MI
DESIGN FREQUENCY	= 25	YRS
DESIGN DISCHARGE	= 60	CFS
DESIGN HW ELEVATION	= 711.1	FT
100 YEAR DISCHARGE	= 110	CFS
100 YEAR HW ELEVATION	= 714.1	FT
OVERTOPPING FREQUENCY	= 200+	YRS
OVERTOPPING DISCHARGE	= 160	CFS
OVERTOPPING ELEVATION	= 718.1	FT

CULVERT HYDRAULIC DATA

DESIGN DISCHARGE	= 550	CFS
DESIGN FREQUENCY	= 25	YRS
DESIGN HW ELEVATION	= 711.6	FT
BASE DISCHARGE	= 850	CFS
BASE FREQUENCY	= 100	YRS
BASE HW ELEVATION	= 715.8	FT
OVERTOPPING DISCHARGE	= 97.3	CFS
OVERTOPPING FREQUENCY	= 100+	YRS
OVERTOPPING ELEVATION	= 718.1*	FT

*DESIGN EXCEPTIONS FOR SHOULDER WIDTH, VERTICAL ALIGNMENT, AND VERTICAL STOPPING SIGHT DISTANCE ARE REQUIRED.

DITCH LEGEND

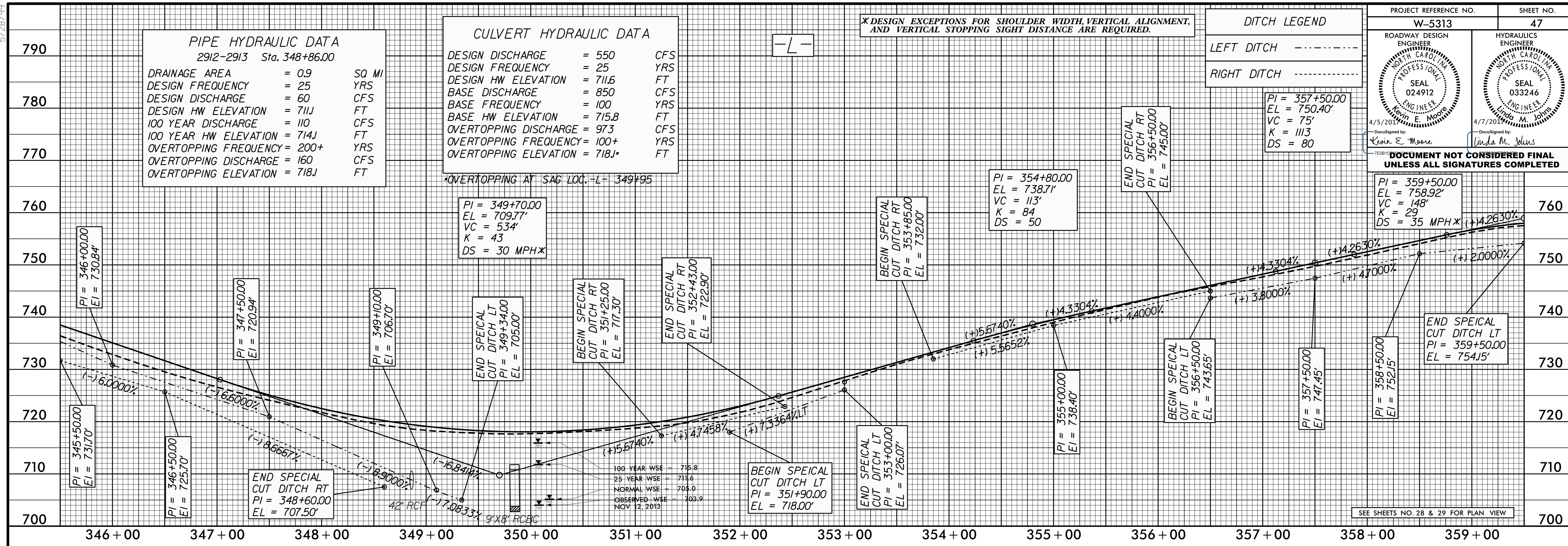
LEFT DITCH - - - - -

RIGHT DITCH - - - - -

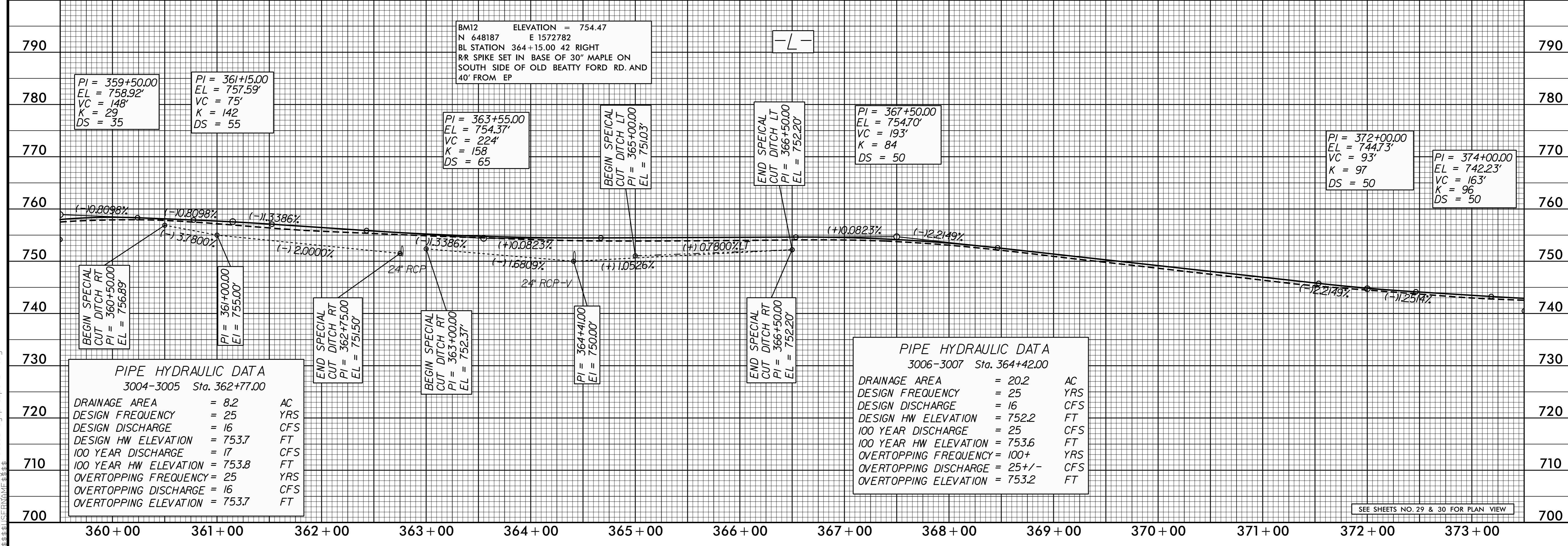
PI = 357+50.00
EL = 750.40'
VC = 75'
K = 1113
DS = 80

DOCUMENT NOT CONSIDERED FINAL UNLESS ALL SIGNATURES COMPLETED

PI = 359+50.00	EL = 758.92'
VC = 148'	K = 29
DS = 35	MPH X



SEE SHEETS NO. 28 & 29 FOR PLAN VIEW



SEE SHEETS NO. 29 & 30 FOR PLAN VIEW

PIPE HYDRAULIC DATA
3004-3005 Sta. 362+77.00

DRAINAGE AREA	= 8.2	AC
DESIGN FREQUENCY	= 25	YRS
DESIGN DISCHARGE	= 16	CFS
DESIGN HW ELEVATION	= 753.7	FT
100 YEAR DISCHARGE	= 17	CFS
100 YEAR HW ELEVATION	= 753.8	FT
OVERTOPPING FREQUENCY	= 25	YRS
OVERTOPPING DISCHARGE	= 16	CFS
OVERTOPPING ELEVATION	= 753.7	FT

PIPE HYDRAULIC DATA
3006-3007 Sta. 364+42.00

DRAINAGE AREA	= 20.2	AC
DESIGN FREQUENCY	= 25	YRS
DESIGN DISCHARGE	= 16	CFS
DESIGN HW ELEVATION	= 752.2	FT
100 YEAR DISCHARGE	= 25	CFS
100 YEAR HW ELEVATION	= 753.6	FT
OVERTOPPING FREQUENCY	= 100+	YRS
OVERTOPPING DISCHARGE	= 25+/-	CFS
OVERTOPPING ELEVATION	= 753.2	FT

28-MAR-2017 14:27 W:\5313_Rd\p1.psh-47.dgn