

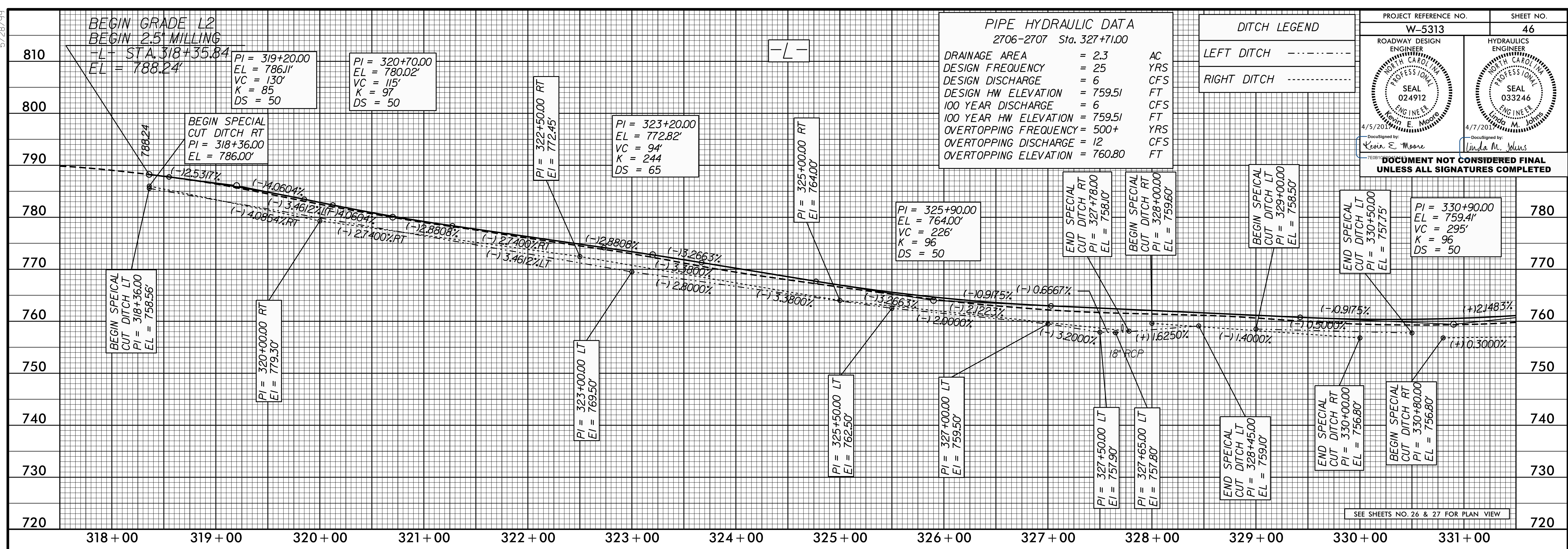
5/28/99

BEGIN GRADE L2
BEGIN 2.5' MILLING
-L+ STA 318+35.84
EL = 788.24'

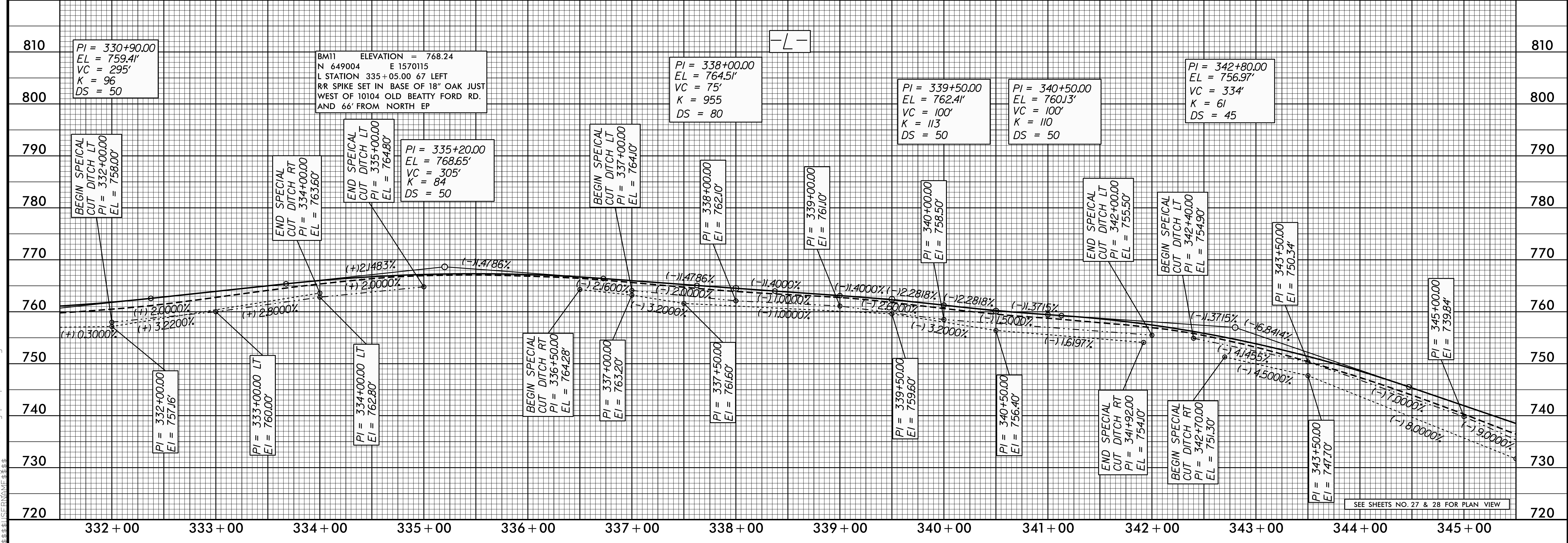
PIPE HYDRAULIC DATA	
2706-2707 Sta. 327+71.00	
DRAINAGE AREA	= 2.3 AC
DESIGN FREQUENCY	= 25 YRS
DESIGN DISCHARGE	= 6 CFS
DESIGN HW ELEVATION	= 759.51 FT
100 YEAR DISCHARGE	= 6 CFS
100 YEAR HW ELEVATION	= 759.51 FT
OVERTOPPING FREQUENCY	= 500+ YRS
OVERTOPPING DISCHARGE	= 12 CFS
OVERTOPPING ELEVATION	= 760.80 FT

DITCH LEGEND	
LEFT DITCH	-----
RIGHT DITCH	-----

PROJECT REFERENCE NO. W-5313	SHEET NO. 46
ROADWAY DESIGN ENGINEER SEAL 024912 Karin E. Moore	HYDRAULICS ENGINEER SEAL 033246 Linda M. Johns
4/5/2017	4/7/2017
DESIGNED BY: Karin E. Moore	
CHECKED BY: Linda M. Johns	
DOCUMENT NOT CONSIDERED FINAL UNLESS ALL SIGNATURES COMPLETED	



SEE SHEETS NO. 26 & 27 FOR PLAN VIEW



SEE SHEETS NO. 27 & 28 FOR PLAN VIEW

28-MAR-2017 14:27 W:\5313_Rdwy_pfl.psh-46.dgn