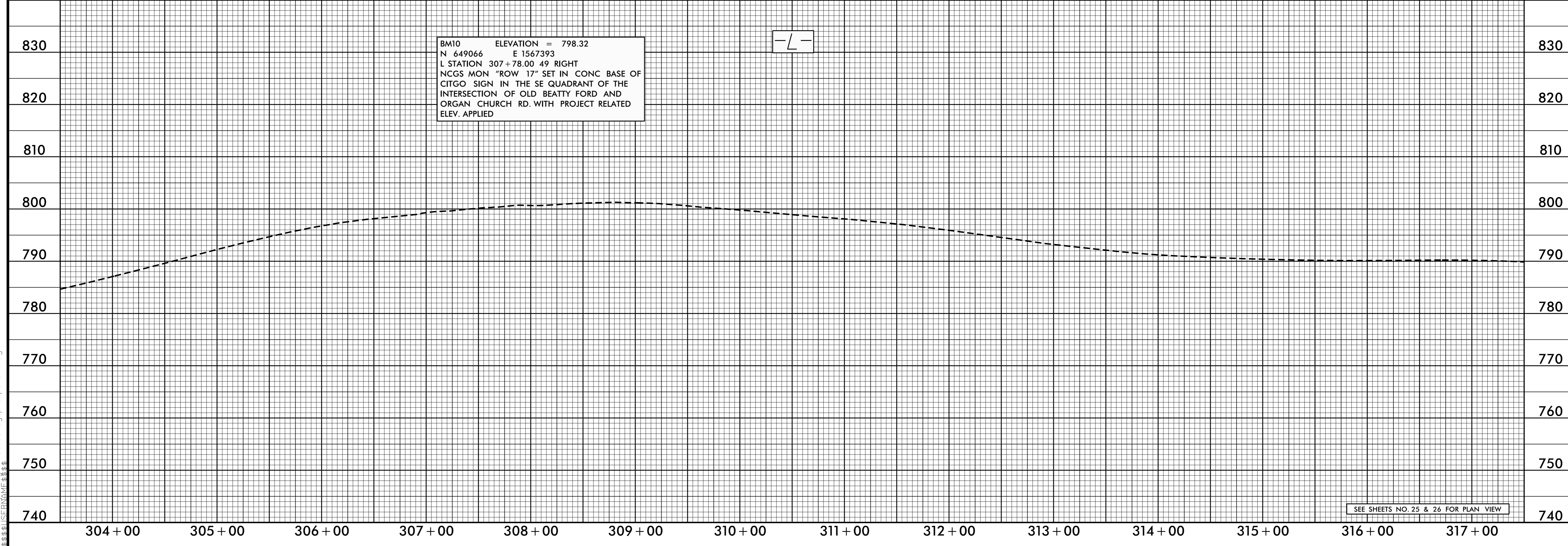
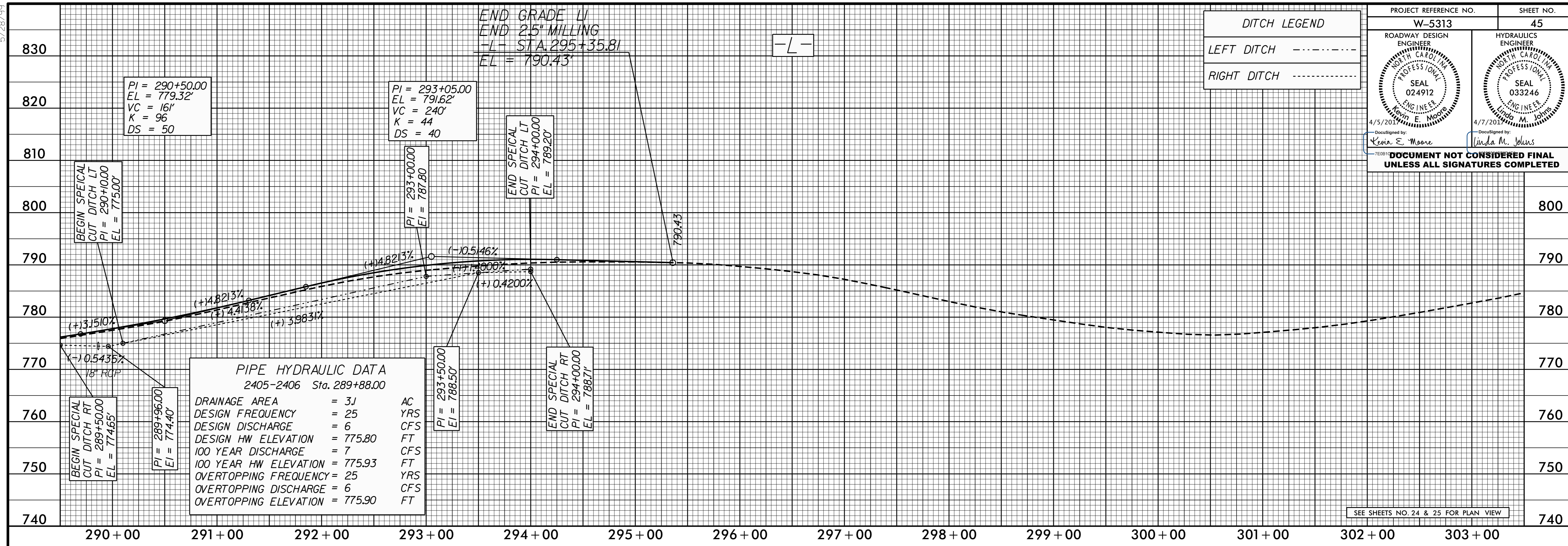


5/28/99

PROJECT REFERENCE NO. W-5313	SHEET NO. 45
ROADWAY DESIGN ENGINEER SEAL 024912 4/5/2017 Kevin E. Moore	HYDRAULICS ENGINEER SEAL 033246 4/7/2017 Linda M. Johns
DOCUMENT NOT CONSIDERED FINAL UNLESS ALL SIGNATURES COMPLETED	

DITCH LEGEND
 LEFT DITCH - - - - -
 RIGHT DITCH - - - - -



28-MAR-2017 14:27 W:\5313_Rdwy_Plan_45.dgn