

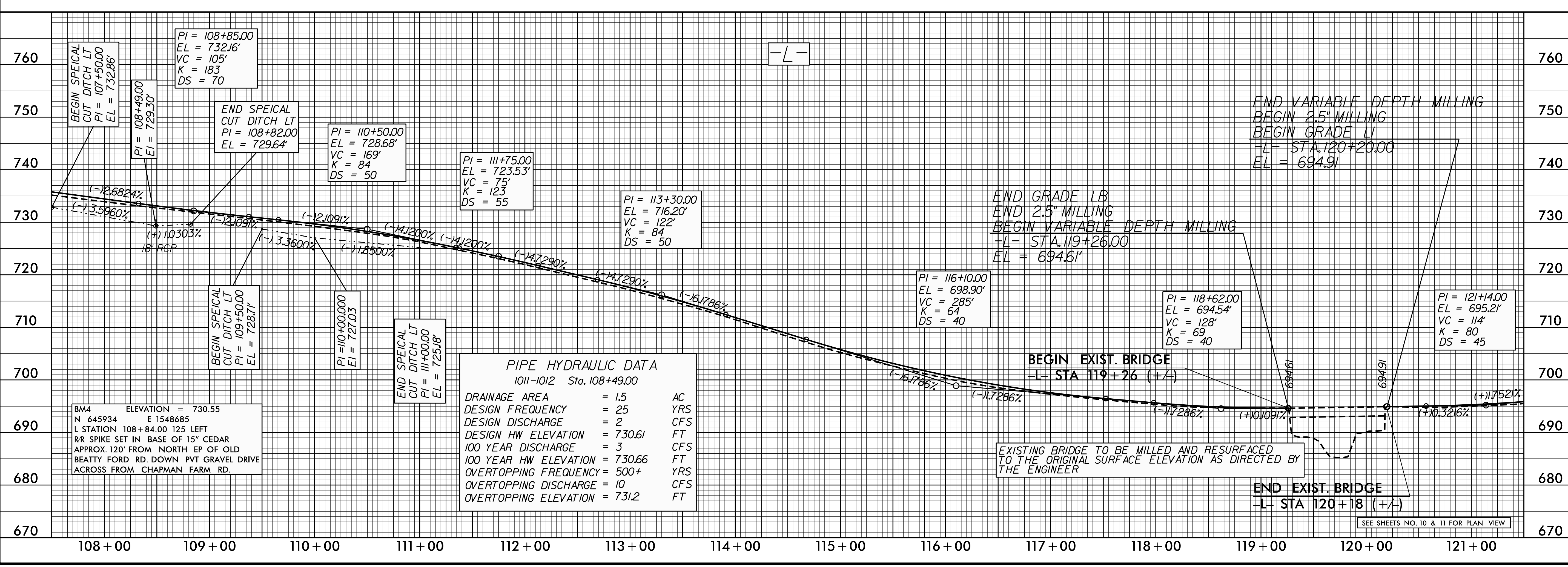
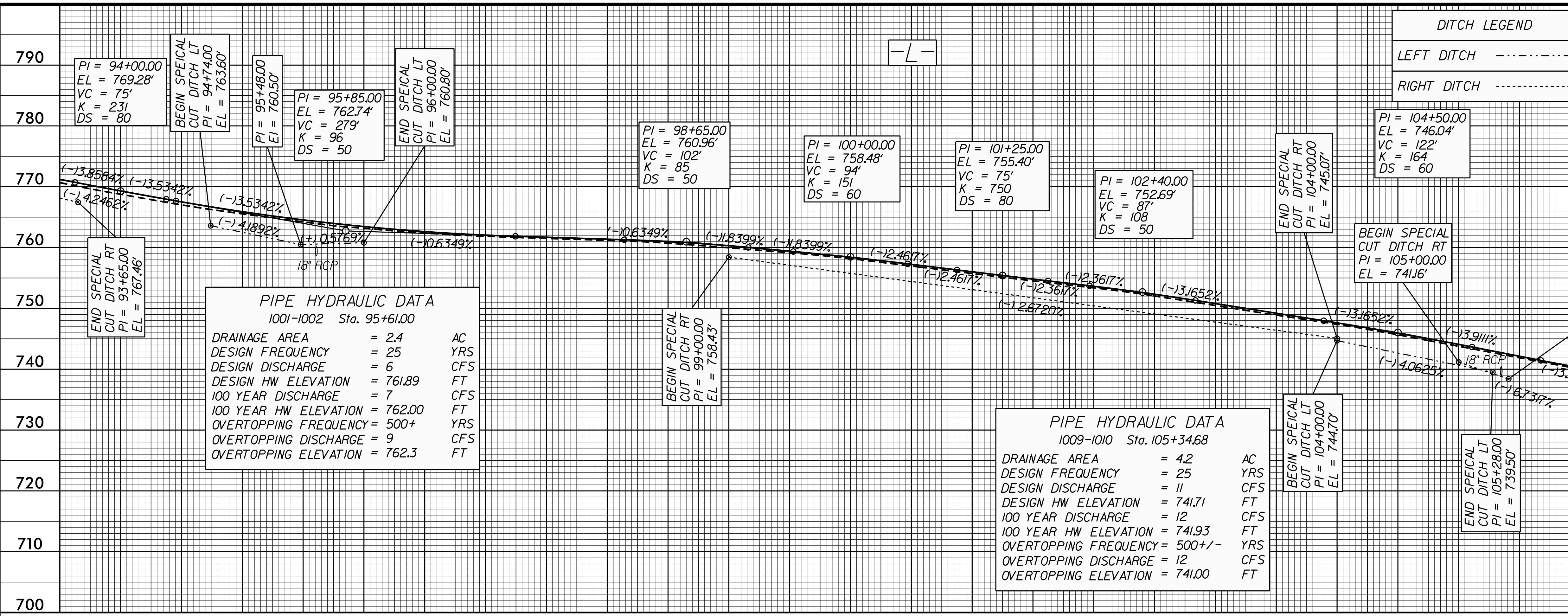
5/28/99

28-MAR-2017 14:27 W:\5313_Rd\pfl.psh-38.dgn

PROJECT REFERENCE NO. W-5313	SHEET NO. 38
ROADWAY DESIGN ENGINEER SEAL 024912 Kevin E. Moore 4/5/2017	HYDRAULICS ENGINEER SEAL 033246 Linda M. Johns 4/7/2017

DOCUMENT NOT CONSIDERED FINAL
UNLESS ALL SIGNATURES COMPLETED

PI = 94+00.00 EL = 769.28' VC = 75' K = 231 DS = 80	BEGIN SPECIAL CUT DITCH LT PI = 94+74.00 EL = 763.60'	PI = 95+48.00 EL = 760.50'	PI = 95+85.00 EL = 762.74' VC = 279' K = 96 DS = 50	END SPECIAL CUT DITCH LT PI = 96+00.00 EL = 760.80'	PI = 98+65.00 EL = 760.96' VC = 102' K = 85 DS = 50	PI = 100+00.00 EL = 758.48' VC = 94' K = 151 DS = 60	PI = 101+25.00 EL = 755.40' VC = 75' K = 750 DS = 80	PI = 102+40.00 EL = 752.69' VC = 87' K = 108 DS = 50	END SPECIAL CUT DITCH RT PI = 104+00.00 EL = 745.07'	PI = 104+50.00 EL = 746.04' VC = 122' K = 164 DS = 60	BEGIN SPECIAL CUT DITCH RT PI = 105+00.00 EL = 741.16'	PI = 106+30.00 EL = 739.00' VC = 125' K = 102 DS = 50	END SPECIAL CUT DITCH RT PI = 105+41.00 EL = 738.40'
---	--	-------------------------------	---	--	---	--	--	--	---	---	---	---	---



SEE SHEETS NO. 10 & 11 FOR PLAN VIEW