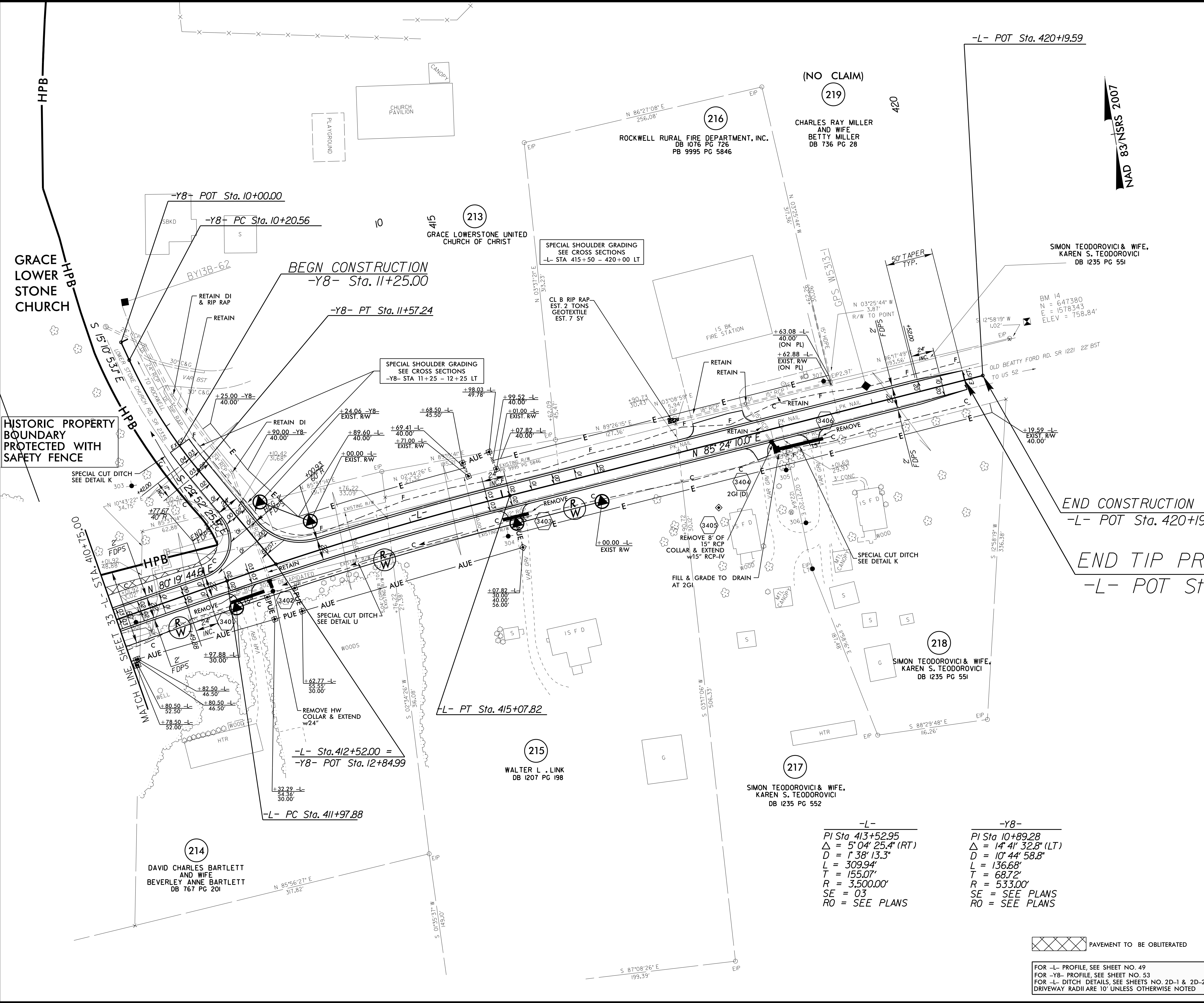


DOCUMENT NOT CONSIDERED FINAL
UNLESS ALL SIGNATURES COMPLETED

DESIGN EXCEPTIONS FOR SHOULDER WIDTH, VERTICAL ALIGNMENT AND VERTICAL STOPPING SIGHT DISTANCE ARE REQUIRED.

8/17/99
 REVISIONS
 28-APR-2017 10:32 W-5313-Rdy_psh_sht34.dgn
 9:58:00 PM

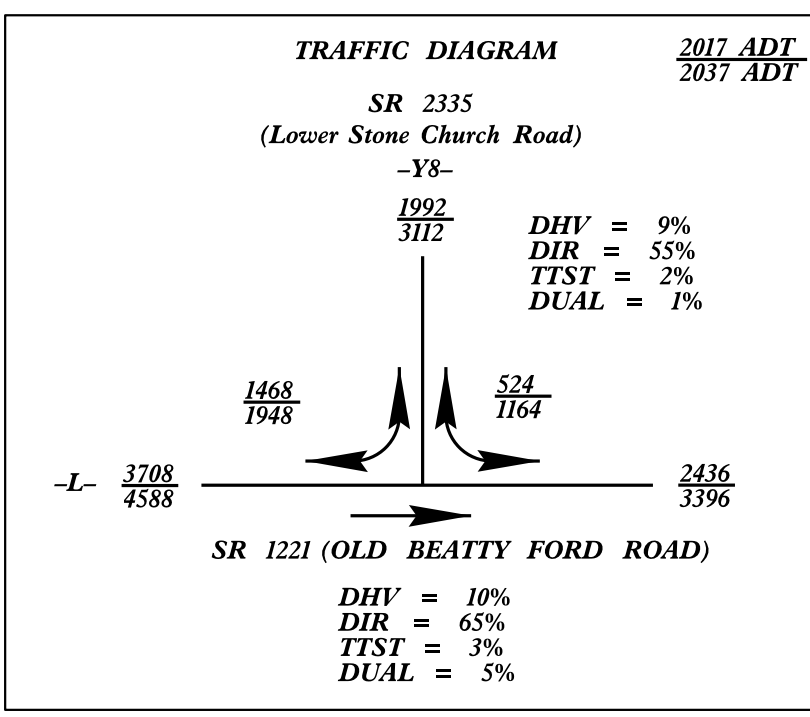


NAD 83/NSRS 2007

END CONSTRUCTION
-L- POT Sta. 420+19.59

END TIP PROJECT W-5313
-L- POT Sta. 420+00.00

-L-	-Y8-
PI Sta 413+52.95	PI Sta 10+89.28
$\Delta = 5^{\circ} 04' 25.4" (RT)$	$\Delta = 14^{\circ} 41' 32.8" (LT)$
$D = 1^{\circ} 38' 13.3"$	$D = 10^{\circ} 44' 58.8"$
$L = 309.94'$	$L = 136.68'$
$R = 155.07'$	$R = 68.72'$
$SE = 03$	$R = 533.00'$
$RO = SEE PLANS$	$RO = SEE PLANS$



PAVEMENT TO BE OBLITERATED

FOR -L- PROFILE, SEE SHEET NO. 49
 FOR -Y8- PROFILE, SEE SHEET NO. 53
 FOR -L- DITCH DETAILS, SEE SHEETS NO. 2D-1 & 2D-2
 DRIVEWAY RADII ARE 10' UNLESS OTHERWISE NOTED