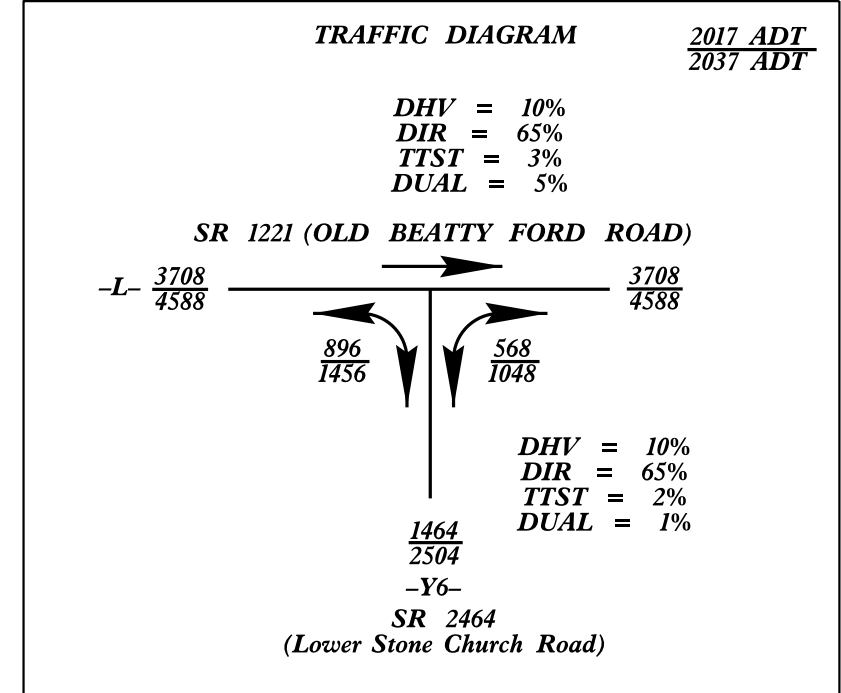


PROJECT REFERENCE NO. W-5313	SHEET NO. 33
RW SHEET NO.	
ROADWAY DESIGN ENGINEER PROFESSIONAL SEAL 024912 Kevin E. Moore	HYDRAULICS ENGINEER PROFESSIONAL SEAL 033246 Linda M. Johns
DESIGNED BY: Kevin E. Moore	
CHECKED BY: Linda M. Johns	
DATE: 4/28/2017	
DOCUMENT NOT CONSIDERED FINAL UNLESS ALL SIGNATURES COMPLETED	

DESIGN EXCEPTIONS FOR SHOULDER WIDTH, VERTICAL ALIGNMENT AND VERTICAL STOPPING SIGHT DISTANCE ARE REQUIRED.



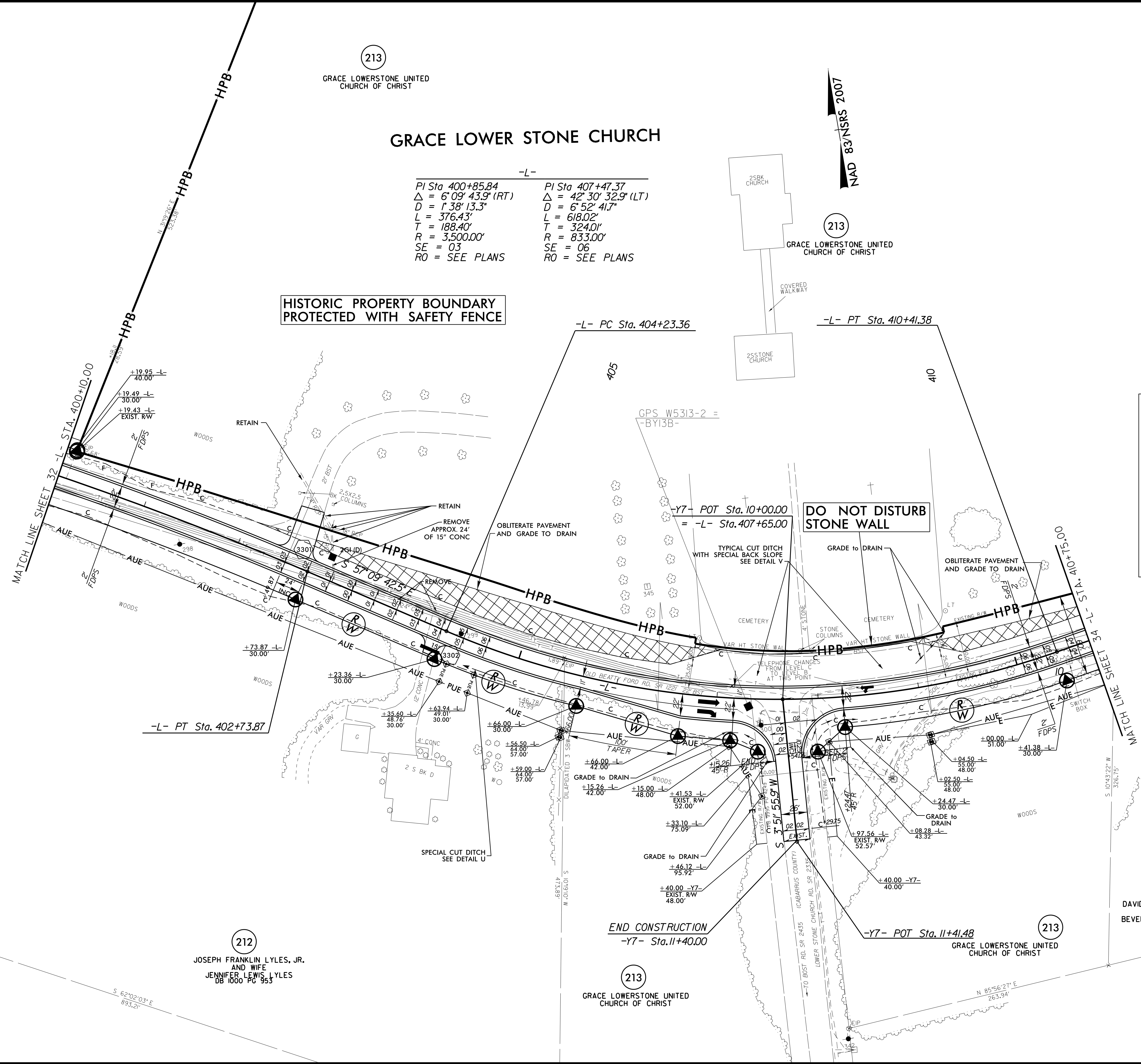
GRACE LOWER STONE CHURCH

213
GRACE LOWERSTONE UNITED CHURCH OF CHRIST

HISTORIC PROPERTY BOUNDARY PROTECTED WITH SAFETY FENCE

-L-
 PI Sta 400+85.84 PI Sta 407+47.37
 $\Delta = 6^{\circ}09'43.9''$ (RT) $\Delta = 42^{\circ}30'32.9''$ (LT)
 $D = 138'13.3''$ $D = 6'52'41.7''$
 $L = 376.43'$ $L = 618.02'$
 $T = 188.40'$ $T = 324.01'$
 $R = 3,500.00'$ $R = 833.00'$
 $SE = 03$ $SE = 06$
 $RO = \text{SEE PLANS}$ $RO = \text{SEE PLANS}$

NAD 83/NSRS 2007



END CONSTRUCTION
-Y7- Sta. 11+40.00

214
DAVID CHARLES BARTLETT AND WIFE
BEVERLEY ANNE BARTLETT
DB 767 PG 201

FOR -L- PROFILE, SEE SHEETS NO. 48 & 49
FOR -Y7- PROFILE, SEE SHEET NO. 53
3" SAW CUT REQUIRED FROM CHURCH WALL OUT
FOR -L- DITCH DETAILS, SEE SHEETS NO. 2D-1 & 2D-2
DRIVEWAY RADII ARE 10' UNLESS OTHERWISE NOTED

PAVEMENT TO BE OBLITERATED

REVISIONS

8/17/99

28-APR-2017 10:32 W:\5313_Rdwy_psh_sht33.dgn
USER: JEFFREY.WAYNE