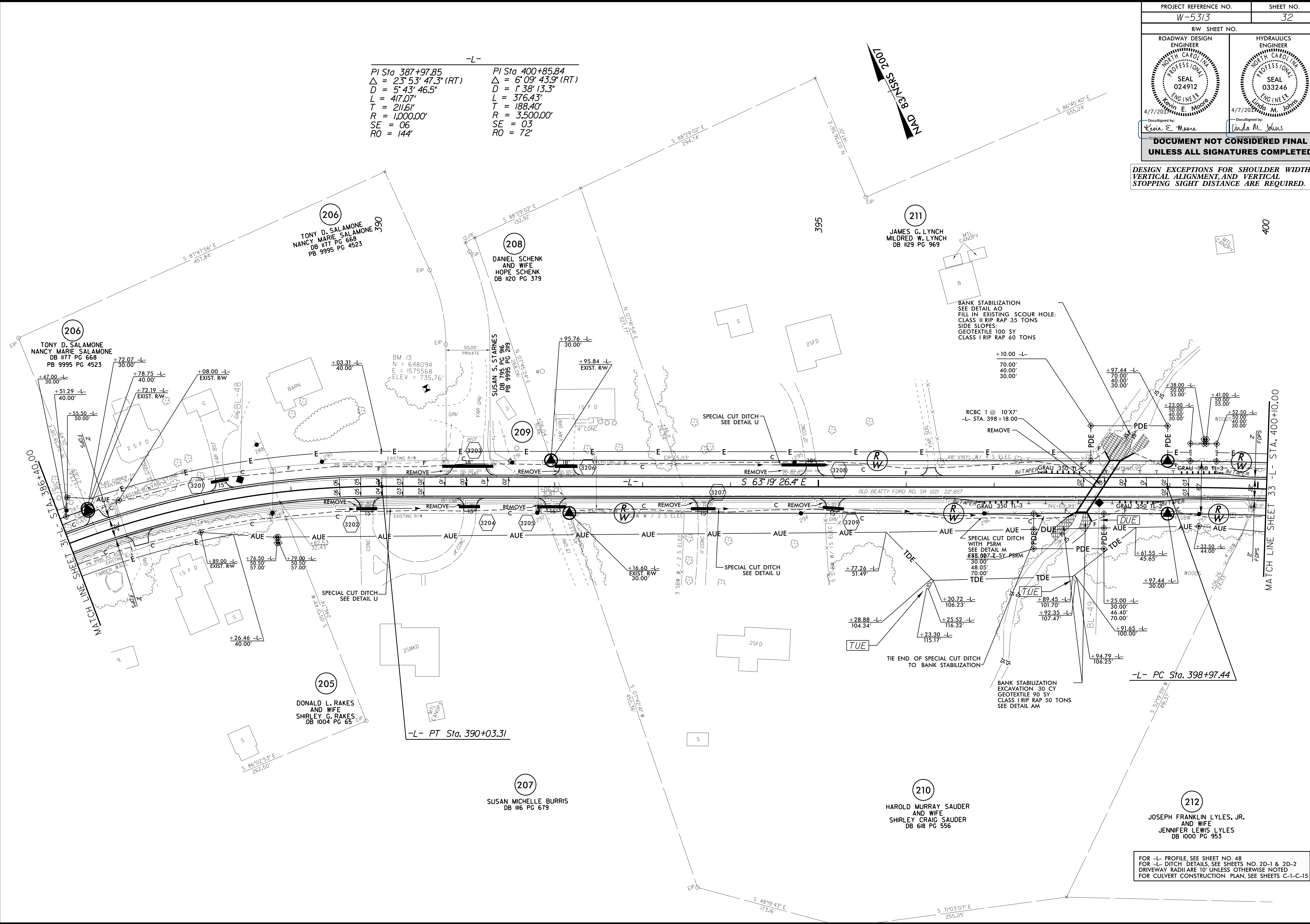


DOCUMENT NOT CONSIDERED FINAL
UNLESS ALL SIGNATURES COMPLETED

DESIGN EXCEPTIONS FOR SHOULDER WIDTH, VERTICAL ALIGNMENT, AND VERTICAL STOPPING SIGHT DISTANCE ARE REQUIRED.

-L-
 PI Sta 387+97.85 PI Sta 400+85.84
 $\Delta = 23^{\circ}53'47.3" (RT)$ $\Delta = 6^{\circ}09'43.9" (RT)$
 $D = 5'43'46.5"$ $D = 1'38'13.3"$
 $L = 417.07'$ $L = 376.43'$
 $T = 211.61'$ $T = 188.40'$
 $R = 1,000.00'$ $R = 3,500.00'$
 $SE = 06$ $SE = 03$
 $RO = 144'$ $RO = 72'$

8/17/99
 REVISIONS
 07-APR-2017 JOH4 W-5313-Rdy_psh_shk32.dgn
 3:58:58 PM
 3:58:58 PM



FOR -L- PROFILE, SEE SHEET NO. 48
 FOR -L- DITCH DETAILS, SEE SHEETS NO. 2D-1 & 2D-2
 FOR CULVERT CONSTRUCTION PLAN, SEE SHEETS C-1-C-15