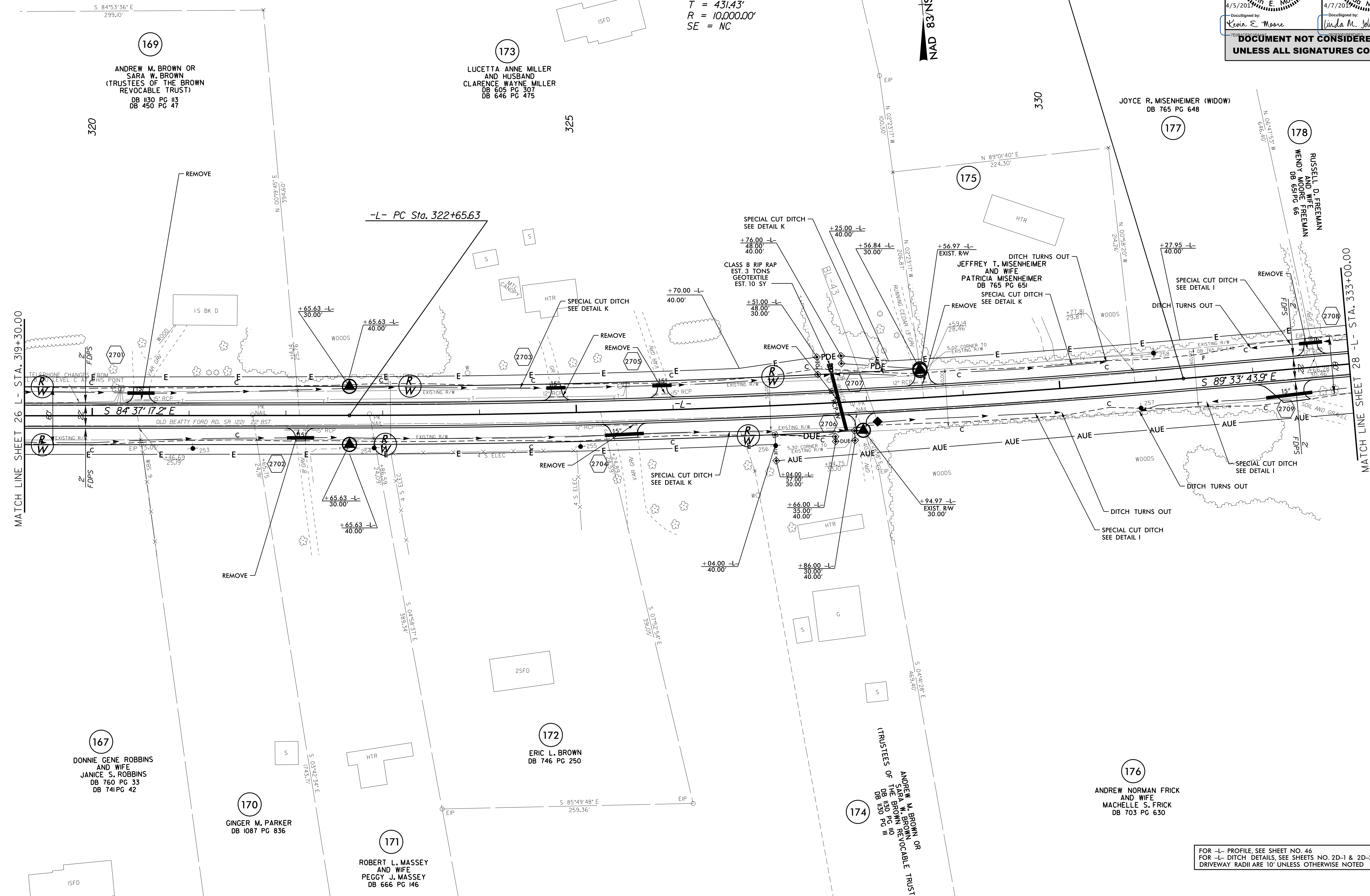


PROJECT REFERENCE NO. W-5313	SHEET NO. 27
RW SHEET NO.	
ROADWAY DESIGN ENGINEER KIM E. MOORE PROFESSIONAL SEAL 024912 4/5/2017	HYDRAULICS ENGINEER LINDA M. JOHNS PROFESSIONAL SEAL 033246 4/7/2017
Designed by: Kevin E. Moore	DocuSigned by: Linda M. Johns
DOCUMENT NOT CONSIDERED FINAL UNLESS ALL SIGNATURES COMPLETED	

-L-
 PI Sta 326+97.06
 $\Delta = 4' 56" 26.7" (LT)$
 $D = 0' 34" 22.6"$
 $L = 862.32'$
 $T = 431.43'$
 $R = 10,000.00'$
 $SE = NC$

NAD 83/NSRS 2007



MATCH LINE SHEET 26 L- STA. 319+30.00

MATCH LINE SHEET 28 L- STA. 333+00.00

169
 ANDREW M. BROWN OR
 SARA W. BROWN
 (TRUSTEES OF THE BROWN
 REVOCABLE TRUST)
 DB 1130 PG 113
 DB 450 PG 47

173
 LUCETTA ANNE MILLER
 AND HUSBAND
 CLARENCE WAYNE MILLER
 DB 605 PG 307
 DB 646 PG 475

177
 JOYCE R. MISENHEIMER (WIDOW)
 DB 765 PG 648

178
 RUSSELL D. FREEMAN
 AND WIFE
 WENDY M. FREEMAN
 DB 681 PG 66

167
 DONNIE GENE ROBBINS
 AND WIFE
 JANICE S. ROBBINS
 DB 760 PG 33
 DB 741 PG 42

170
 GINGER M. PARKER
 DB 1087 PG 836

171
 ROBERT L. MASSEY
 AND WIFE
 PEGGY J. MASSEY
 DB 666 PG 146

172
 ERIC L. BROWN
 DB 746 PG 250

174
 ANDREW M. BROWN OR
 SARA W. BROWN
 (TRUSTEES OF
 THE BROWN
 REVOCABLE TRUST)
 DB 1130 PG 113

176
 ANDREW NORMAN FRICK
 AND WIFE
 MACHELLE S. FRICK
 DB 703 PG 630

FOR -L- PROFILE, SEE SHEET NO. 46
 FOR -L- DITCH DETAILS, SEE SHEETS NO. 2D-1 & 2D-2
 DRIVEWAY RADII ARE 10' UNLESS OTHERWISE NOTED

8/17/99

28-MAR-2017 14:27 W-5313-Rdy-sh-t27.dgn
 9:58:50 PM

REVISIONS