

HISTORIC PROPERTY BOUNDARY  
PROTECTED WITH SAFETY FENCE

ORLIN CRUSE HOUSE

153  
JANIE I. MARTIN  
AND HUSBAND  
STEPHEN S. MARTIN  
DB 878 PG 164

-L-  
 PI Sta 292+51.69      PI Sta 298+95.46  
 $\Delta = 5^{\circ}08'14.8''$  (RT)       $\Delta = 10^{\circ}11'53.8''$  (LT)  
 $D = 2^{\circ}17'30.6''$        $D = 1^{\circ}59'59.5''$   
 $L = 224.16'$        $L = 509.95'$   
 $T = 112.16'$        $T = 255.65'$   
 $R = 2,500.00'$        $R = 2,865.00'$   
 $SE = 04$        $SE = EXIST.$   
 $RO = 96'$        $RO = EXIST.$

DO NOT DISTURB TREES,  
ADJUST CONSTRUCTION LIMITS  
AS NEEDED TO ELIMINATE ANY  
IMPACTS PER DIRECTION OF THE  
CONSTRUCTION ENGINEER

NAD 83/NSRS 2007

ALFRED RAY WILHELM  
AND WIFE  
MARGARET JOAN BROWN WIL  
DB 593 PG 602

AMY VENDITTI  
DB 994 PG 567  
PB 9995 PG 2503

LINDA POWERS  
DB 1050 PG 982  
PB 9995 PG 2503

DAVID R. EUART  
DB 757 PG 401

JEFFERY TODD HILL  
DB 876 PG 941

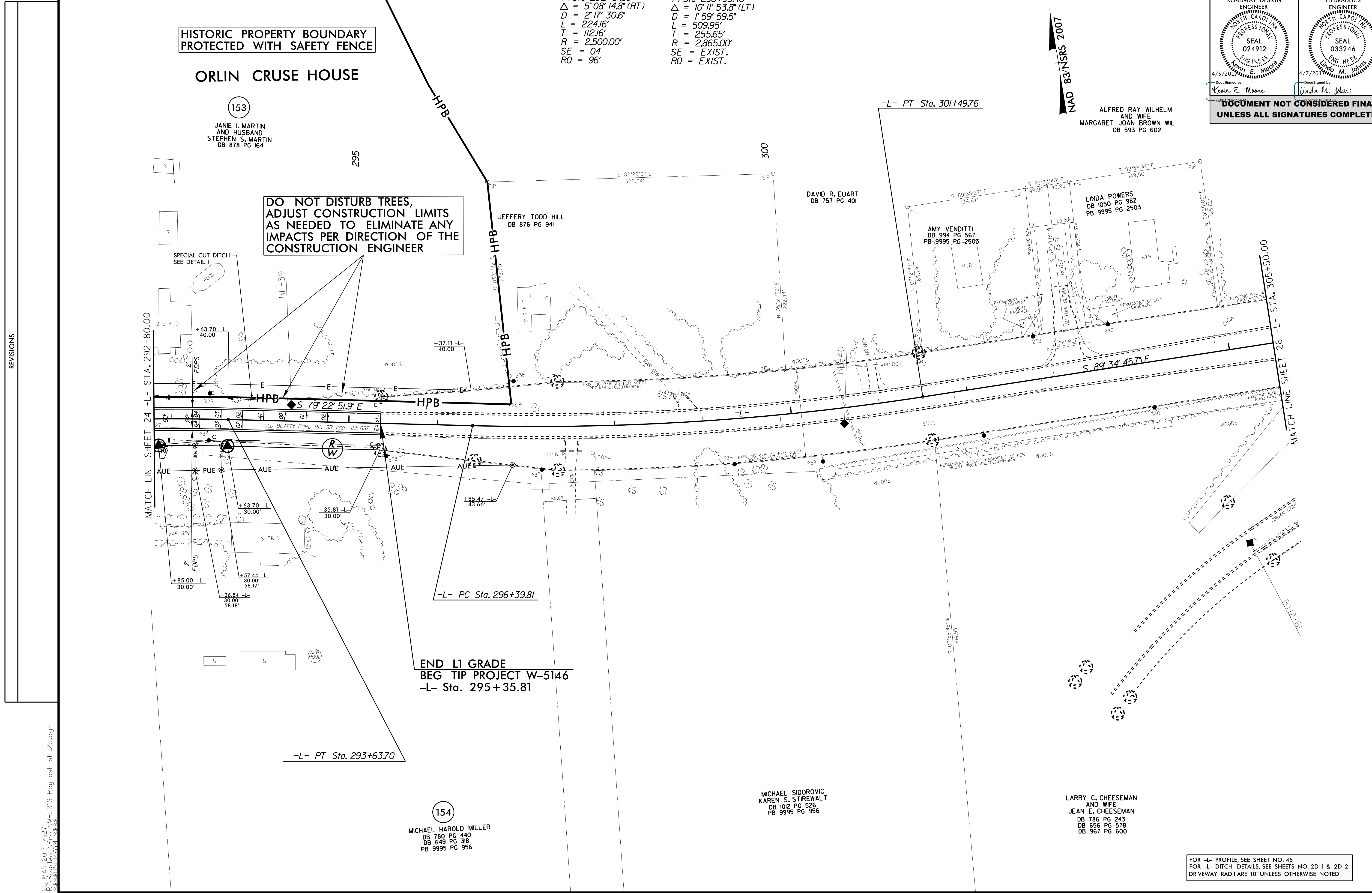
END L1 GRADE  
BEG TIP PROJECT W-5146  
-L- Sta. 295+35.81

154  
MICHAEL HAROLD MILLER  
DB 780 PG 440  
DB 649 PG 318  
PB 9995 PG 956

MICHAEL SIDOROVIC  
KAREN S. STIREWALT  
DB 1012 PG 526  
PB 9995 PG 956

LARRY C. CHEESEMAN  
AND WIFE  
JEAN E. CHEESEMAN  
DB 786 PG 243  
DB 656 PG 578  
DB 967 PG 600

FOR -L- PROFILE, SEE SHEET NO 45  
FOR -L- DITCH DETAILS, SEE SHEETS NO. 2D-1 & 2D-2  
DRIVEWAY RADII ARE 10' UNLESS OTHERWISE NOTED



REVISIONS

8/17/99

28-MAR-2017 14:27 W-5313-Rdy\_psh-sh25.dgn  
 9:58:58 AM  
 3188