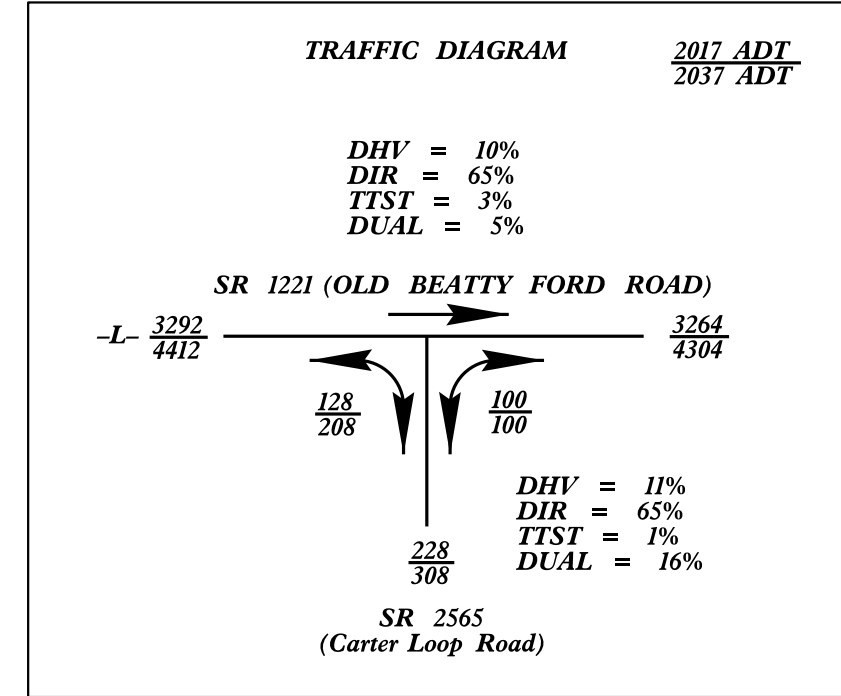
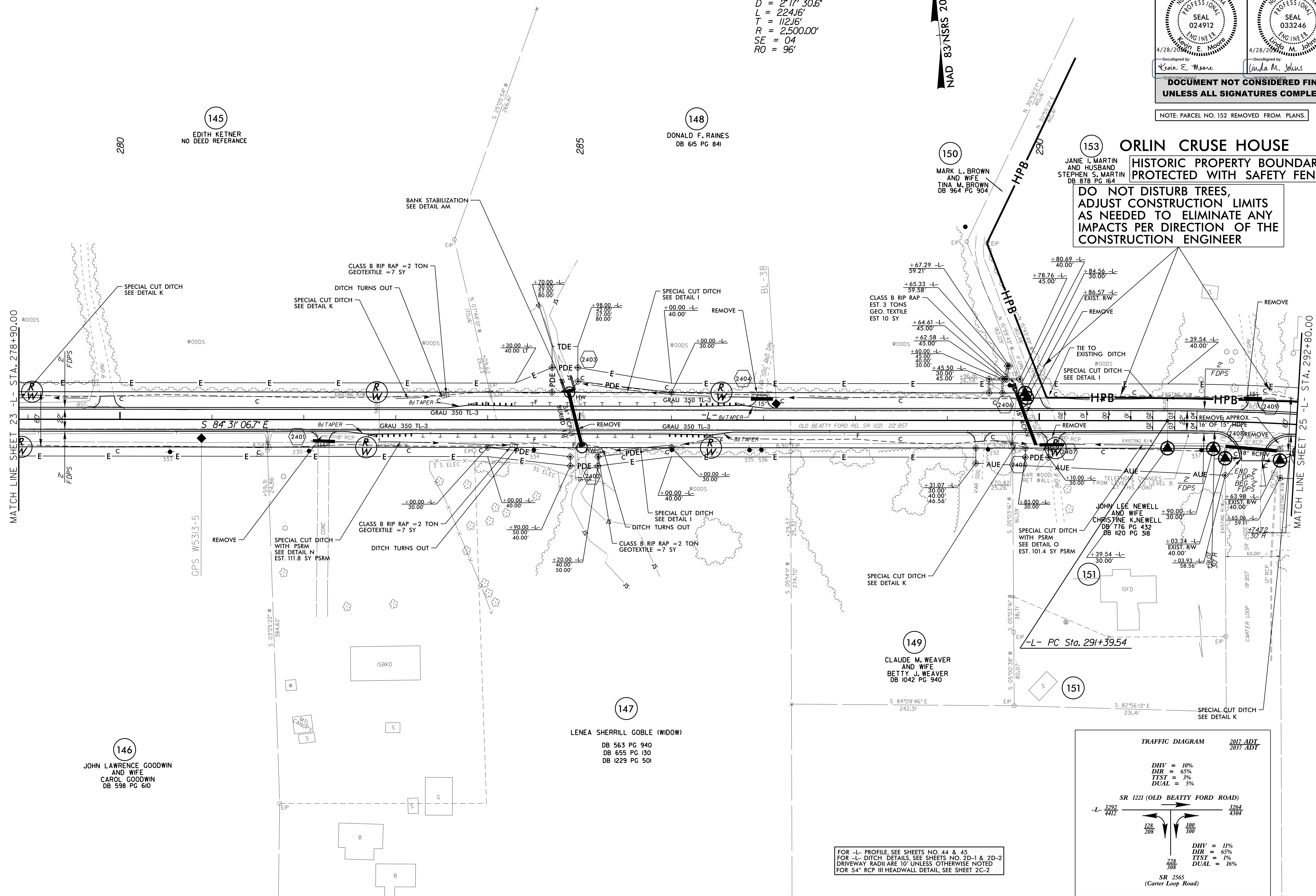


DESIGN EXCEPTIONS FOR SHOULDER WIDTH, VERTICAL ALIGNMENT AND VERTICAL STOPPING SIGHT DISTANCE ARE REQUIRED.

-L-
 PI Sta 292+51.69
 $\Delta = 5' 08" 14.8" (RT)$
 $D = 2' 17" 30.6"$
 $L = 224.16'$
 $R = 2,500.00'$
 $SE = 04$
 $RO = 96'$

NAD 83 NSRS 2007



FOR -L- PROFILE, SEE SHEETS NO. 44 & 45
 FOR -L- DITCH DETAILS, SEE SHEETS NO. 2D-1 & 2D-2
 DRIVEWAY RADII ARE 10' UNLESS OTHERWISE NOTED
 FOR 54" RCP III HEADWALL DETAIL, SEE SHEET 2C-2

REVISIONS

8/17/99

28-APR-2017 10:32 W:\5313_Rdy_psh_sh24.dgn
 934805817.DWG