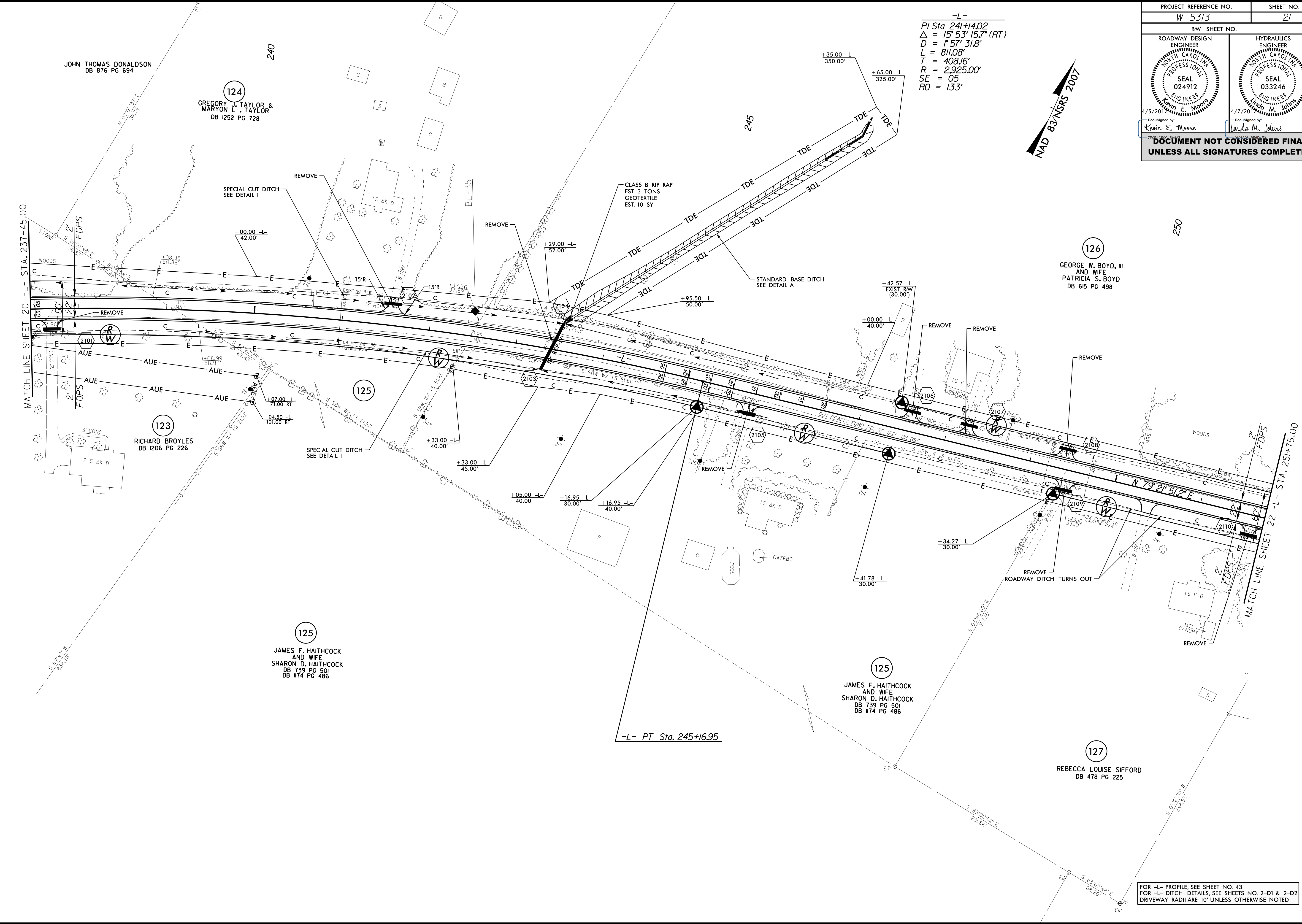
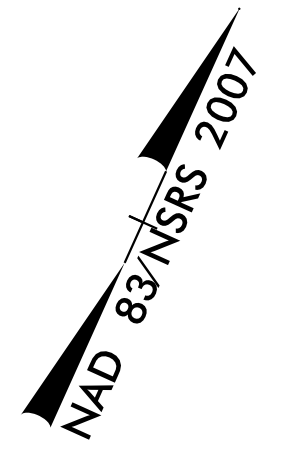


PROJECT REFERENCE NO. W-5313	SHEET NO. 21
RW SHEET NO.	
ROADWAY DESIGN ENGINEER SEAL 024912 Linda E. Moore 4/5/2017	HYDRAULICS ENGINEER SEAL 033246 Linda M. Johns 4/7/2017
<p>DocuSigned by: Linda E. Moore</p> <p>DocuSigned by: Linda M. Johns</p>	
<p>DOCUMENT NOT CONSIDERED FINAL UNLESS ALL SIGNATURES COMPLETED</p>	

-L-
 PI Sta 241+14.02
 $\Delta = 15^{\circ} 53' 15.7''$ (RT)
 $D = 157' 31.8''$
 $L = 811.08'$
 $T = 408.16'$
 $R = 2925.00'$
 $SE = 05$
 $RO = 133'$



MATCH LINE SHEET 20 -L- STA. 237+45.00

MATCH LINE SHEET 22 -L- STA. 251+75.00

-L- PT Sta. 245+16.95

JOHN THOMAS DONALDSON
DB 876 PG 694

124
 GREGORY J. TAYLOR &
 MARYON L. TAYLOR
 DB 1252 PG 728

126
 GEORGE W. BOYD, III
 AND WIFE
 PATRICIA S. BOYD
 DB 615 PG 498

123
 RICHARD BROYLES
 DB 1206 PG 226

125

125
 JAMES F. HAITHCOCK
 AND WIFE
 SHARON D. HAITHCOCK
 DB 739 PG 501
 DB 1174 PG 486

125
 JAMES F. HAITHCOCK
 AND WIFE
 SHARON D. HAITHCOCK
 DB 739 PG 501
 DB 1174 PG 486

127
 REBECCA LOUISE SIFFORD
 DB 478 PG 225

FOR -L- PROFILE, SEE SHEET NO. 43
 FOR -L- DITCH DETAILS, SEE SHEETS NO. 2-D1 & 2-D2
 DRIVEWAY RADII ARE 10' UNLESS OTHERWISE NOTED

REVISIONS

8/17/99

28-MAR-2017 14:25 W-5313-Rdy_psh-sh21.dgn