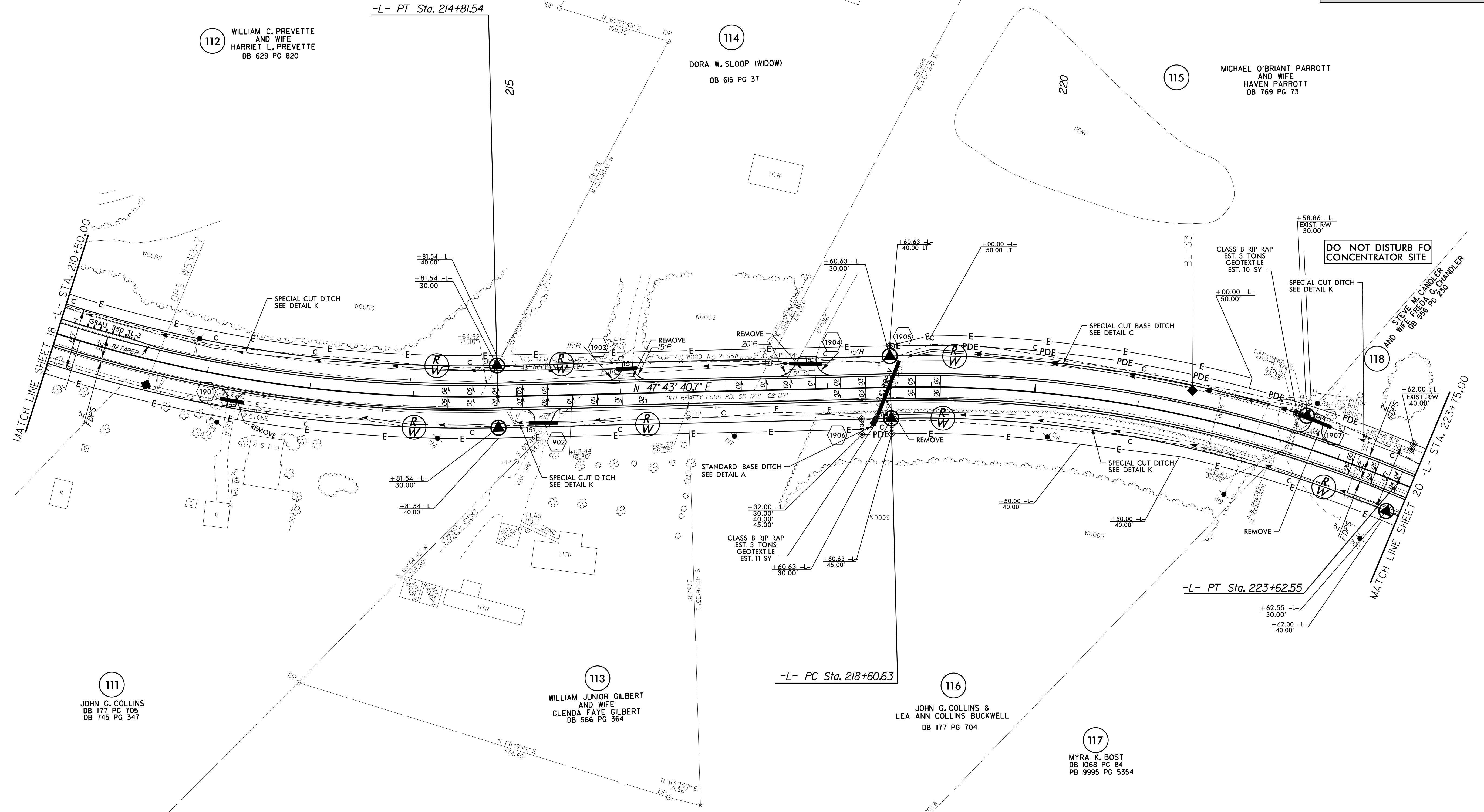
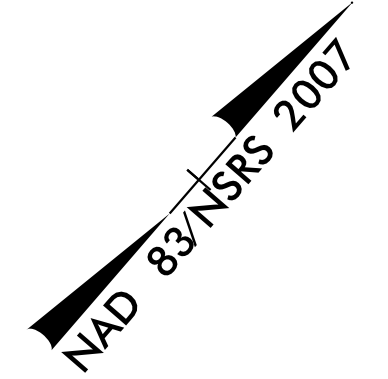


-L-
 PI Sta 212+31.19 PI Sta 221+15.31
 $\Delta = 22^\circ 21' 21.6''$ (LT) $\Delta = 23^\circ 57' 52.9''$ (RT)
 $D = 4' 24' 26.5''$ $D = 4' 46' 28.7''$
 $L = 507.24'$ $L = 501.92'$
 $T = 256.89'$ $T = 254.68'$
 $R = 1,300.00'$ $R = 1,200.00'$
 $SE = 06$ $SE = 06$
 $RO = 144'$ $RO = 144'$



REVISIONS

8/17/99

28-MAR-2017 14:25 W-5313-Rdy_psh_sht19.dgn
 3:58:05 PM W-5313-Rdy_psh_sht19.dgn

FOR -L- PROFILE, SEE SHEET NO. 42
 FOR -L- DITCH DETAILS, SEE SHEETS NO. 2D-1 & 2D-2
 DRIVEWAY RADII ARE 10' UNLESS OTHERWISE NOTED