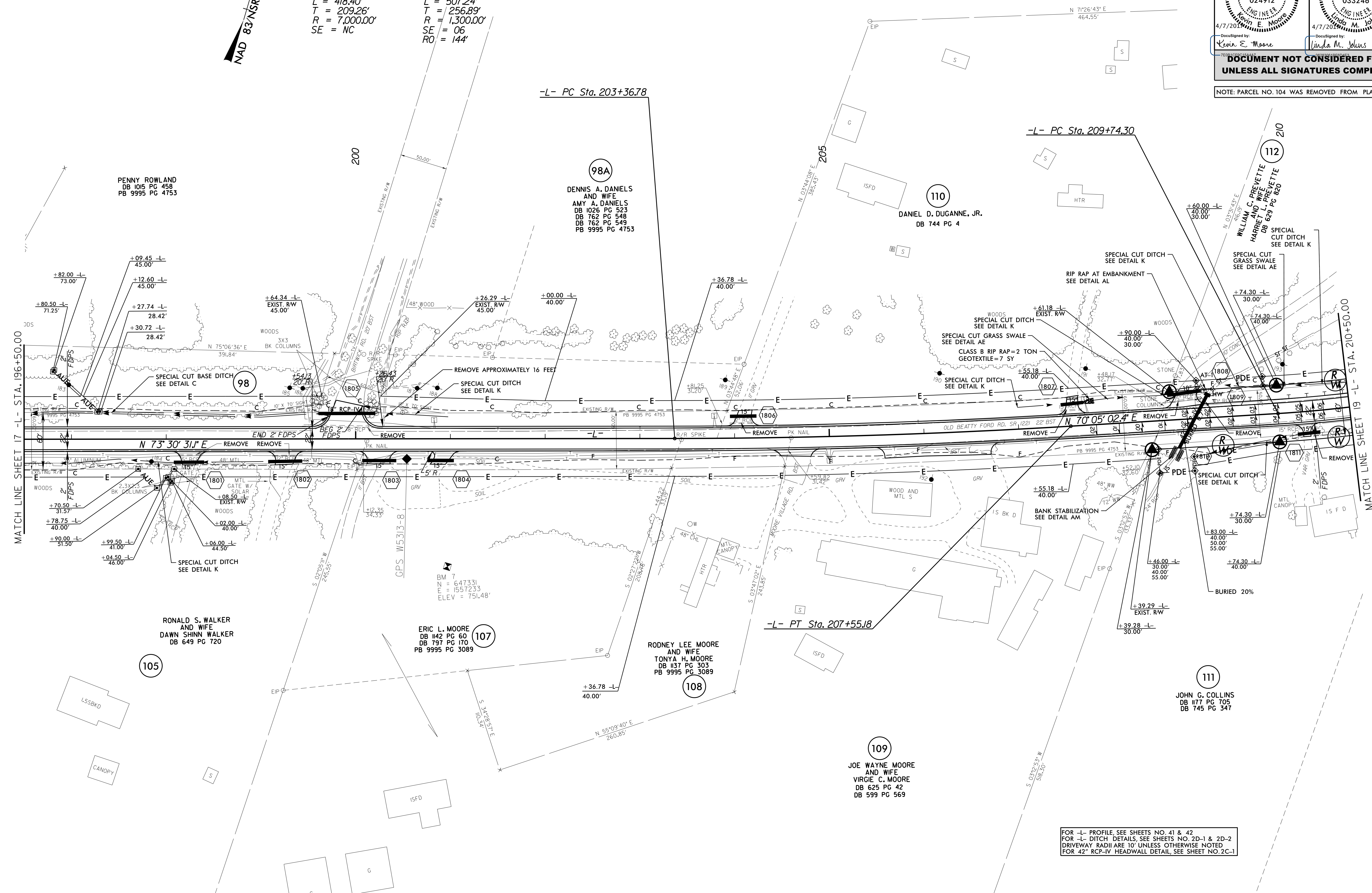


PROJECT REFERENCE NO. W-5313	SHEET NO. 18
RW SHEET NO.	
ROADWAY DESIGN ENGINEER KAROLYN MOORE PROFESSIONAL SEAL 024912 4/7/2017 Kevin E. Moore	HYDRAULICS ENGINEER LINDA M. JOHNS PROFESSIONAL SEAL 033246 4/7/2017 Linda M. Johns
DOCUMENT NOT CONSIDERED FINAL UNLESS ALL SIGNATURES COMPLETED	
NOTE: PARCEL NO. 104 WAS REMOVED FROM PLANS	

NAD 83 NSRS 2007

-L-
 PI Sta 205+46.05 PI Sta 212+31.19
 $\Delta = 3^{\circ} 25' 28.7''$ (LT) $\Delta = 22^{\circ} 21' 21.6''$ (LT)
 $D = 0' 49' 06.6''$ $D = 4' 24' 26.5''$
 $L = 418.40'$ $L = 507.24'$
 $T = 209.26'$ $T = 256.89'$
 $R = 7,000.00'$ $R = 1,300.00'$
 $SE = NC$ $SE = 06$
 $RO = 144'$



REVISIONS

FOR -L- PROFILE, SEE SHEETS NO. 41 & 42
 FOR -L- DITCH DETAILS, SEE SHEETS NO. 2D-1 & 2D-2
 DRIVEWAY RADII ARE 10' UNLESS OTHERWISE NOTED
 FOR 42" RCP-IV HEADWALL DETAIL, SEE SHEET NO. 2C-1

07-APR-2017 10:15 AM W:\5313-Rdy_psh_sht18.dgn
 3:58:08 PM KEM
 8/17/19