

PROJECT REFERENCE NO. W-5313	SHEET NO. 12
RW SHEET NO.	
ROADWAY DESIGN ENGINEER SEAL 024912 Linda M. Johns 4/7/2017	HYDRAULICS ENGINEER SEAL 033246 Linda M. Johns 4/7/2017
DOCUMENT NOT CONSIDERED FINAL UNLESS ALL SIGNATURES COMPLETED	

-L-
 PI Sta 125+42.74
 $\Delta = 20' 57" 41.4" (LT)$
 $D = 6' 52" 41.7"$
 $L = 304.75'$
 $T = 154.10'$
 $R = 833.00'$
 $SE = 06'$
 $RO = 144'$

NAD 83/NRS 2007

72
 MICHAEL GRADY
 AND WIFE
 BONNIE GRADY
 DB 1162 PG 116

74
 JERRY DEAN GARMON
 AND WIFE
 TAMMY D. GARMON
 DB 1002 PG 56

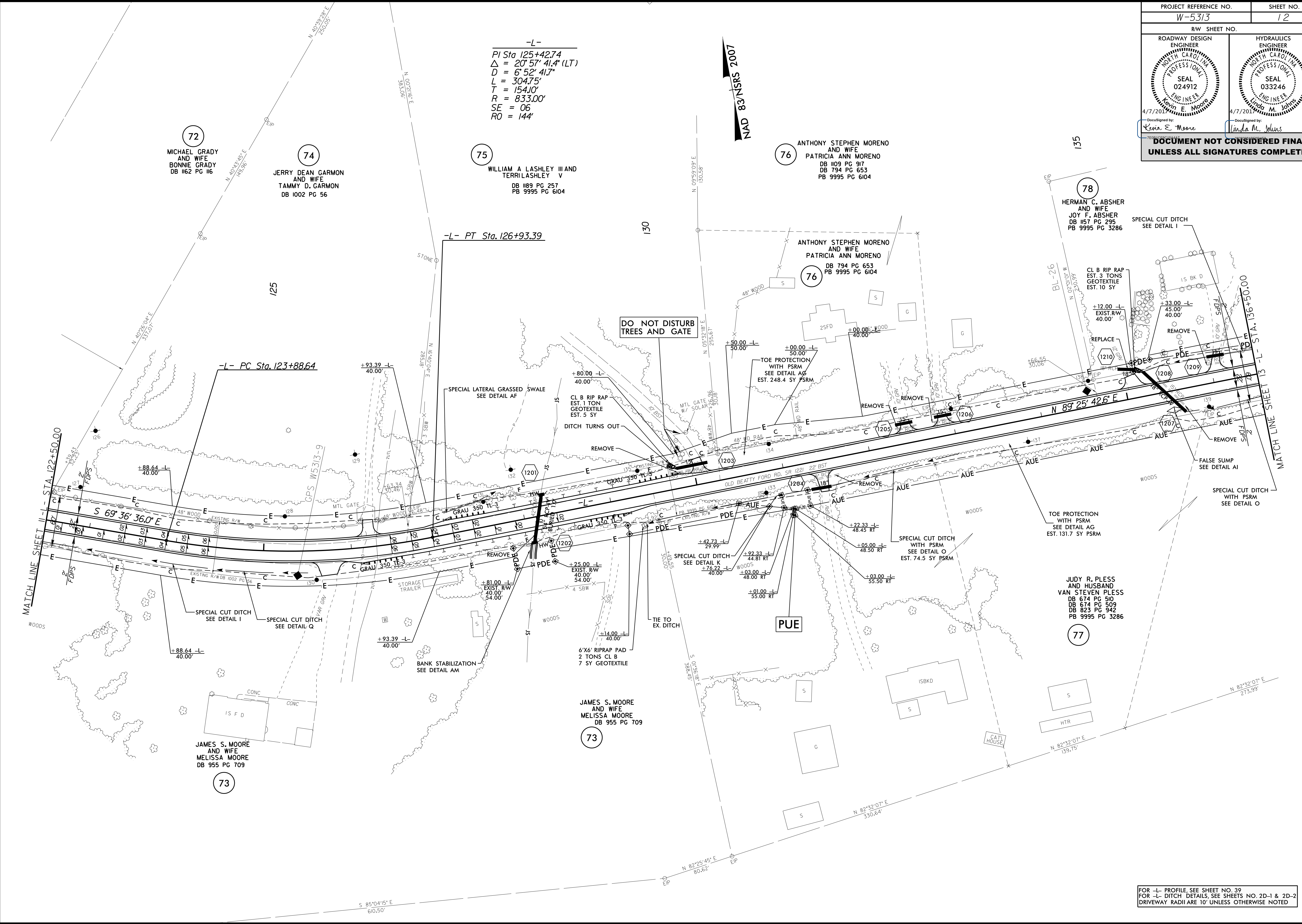
75
 WILLIAM A LASHLEY III
 AND WIFE
 TERRI LASHLEY V
 DB 1189 PG 257
 PB 9995 PG 6104

76
 ANTHONY STEPHEN MORENO
 AND WIFE
 PATRICIA ANN MORENO
 DB 794 PG 917
 DB 794 PG 653
 PB 9995 PG 6104

78
 HERMAN C. ABSHER
 AND WIFE
 JOY F. ABSHER
 DB 1157 PG 295
 PB 9995 PG 3286

77
 JUDY R. PLESS
 AND HUSBAND
 VAN STEVEN PLESS
 DB 674 PG 510
 DB 674 PG 509
 DB 823 PG 942
 PB 9995 PG 3286

73
 JAMES S. MOORE
 AND WIFE
 MELISSA MOORE
 DB 955 PG 709



REVISIONS

8/17/99

07 APR 2017 15:00 W-5313-Rdy_psh_sht12.dgn
 9388580787084001838

FOR -L- PROFILE, SEE SHEET NO. 39
 FOR -L- DITCH DETAILS, SEE SHEETS NO. 2D-1 & 2D-2
 DRIVEWAY RADII ARE 10' UNLESS OTHERWISE NOTED