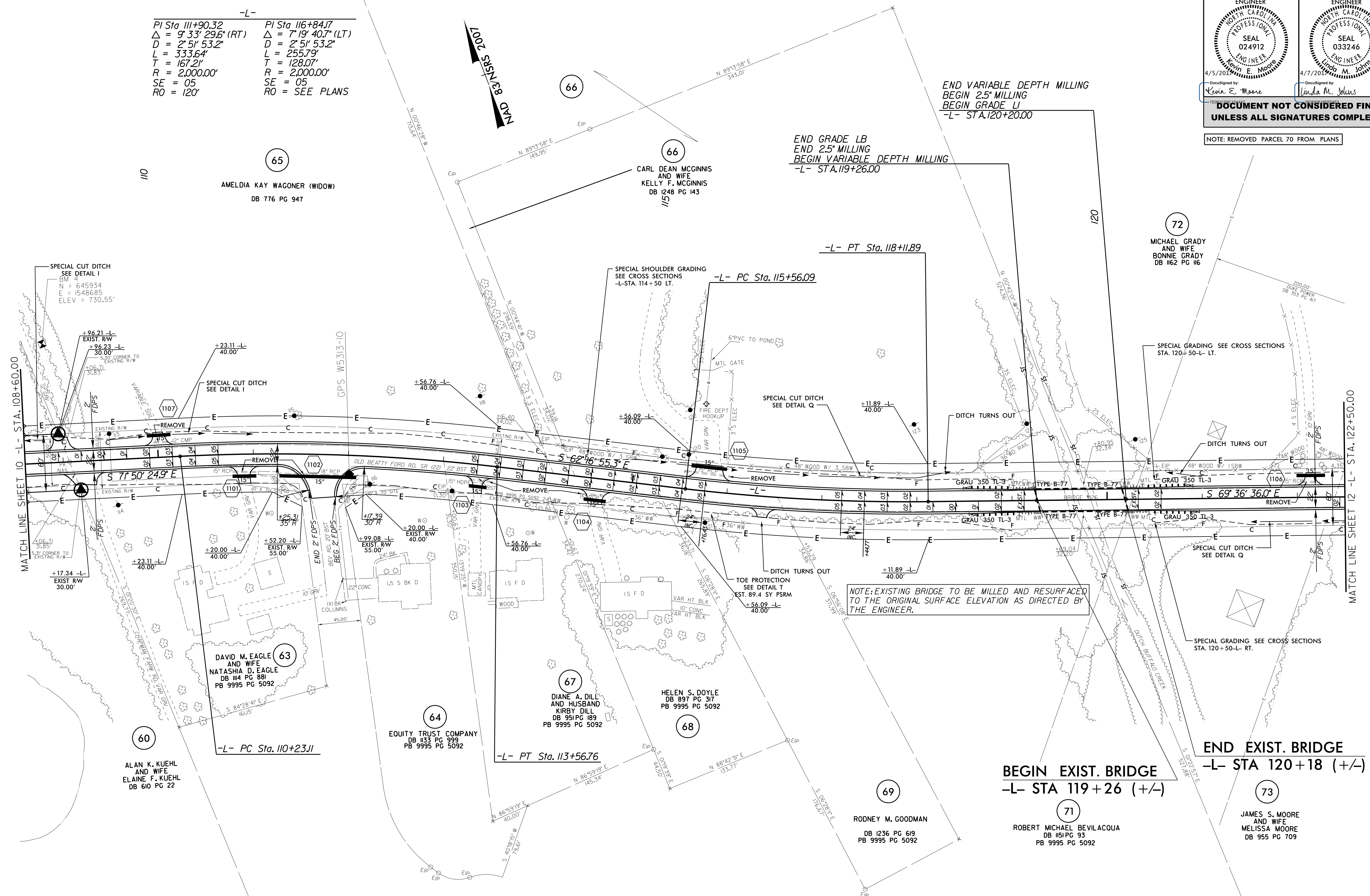


PROJECT REFERENCE NO. W-5313	SHEET NO. 11
RW SHEET NO.	
ROADWAY DESIGN ENGINEER KELVIN E. MOORE PROFESSIONAL SEAL 024912 4/5/2017	HYDRAULICS ENGINEER LINDA M. JOHNS PROFESSIONAL SEAL 033246 4/7/2017
Documented by: <i>Kelvin E. Moore</i> Documented by: <i>Linda M. Johns</i> DOCUMENT NOT CONSIDERED FINAL UNLESS ALL SIGNATURES COMPLETED	

NOTE: REMOVED PARCEL 70 FROM PLANS

-L-
 PI Sta 111+90.32 PI Sta 116+84.17
 $\Delta = 9^{\circ} 33' 29.6" (RT)$ $\Delta = 7^{\circ} 19' 40.7" (LT)$
 $D = 2^{\circ} 51' 53.2"$ $D = 2^{\circ} 51' 53.2"$
 $L = 333.64'$ $L = 255.79'$
 $T = 167.21'$ $T = 128.07'$
 $R = 2,000.00'$ $R = 2,000.00'$
 $SE = 05$ $SE = 05$
 $RO = 120'$ $RO = SEE PLANS$



REVISIONS

8/17/99

28-MAR-2017 14:28 W-5313-Rdy_psh_sht11.dgn

FOR -L- PROFILE, SEE SHEETS NO. 38 & 39
 FOR -L- DITCH DETAILS, SEE SHEETS NO. 2D-1 & 2D-2
 DRIVEWAY RADII ARE 10' UNLESS OTHERWISE NOTED