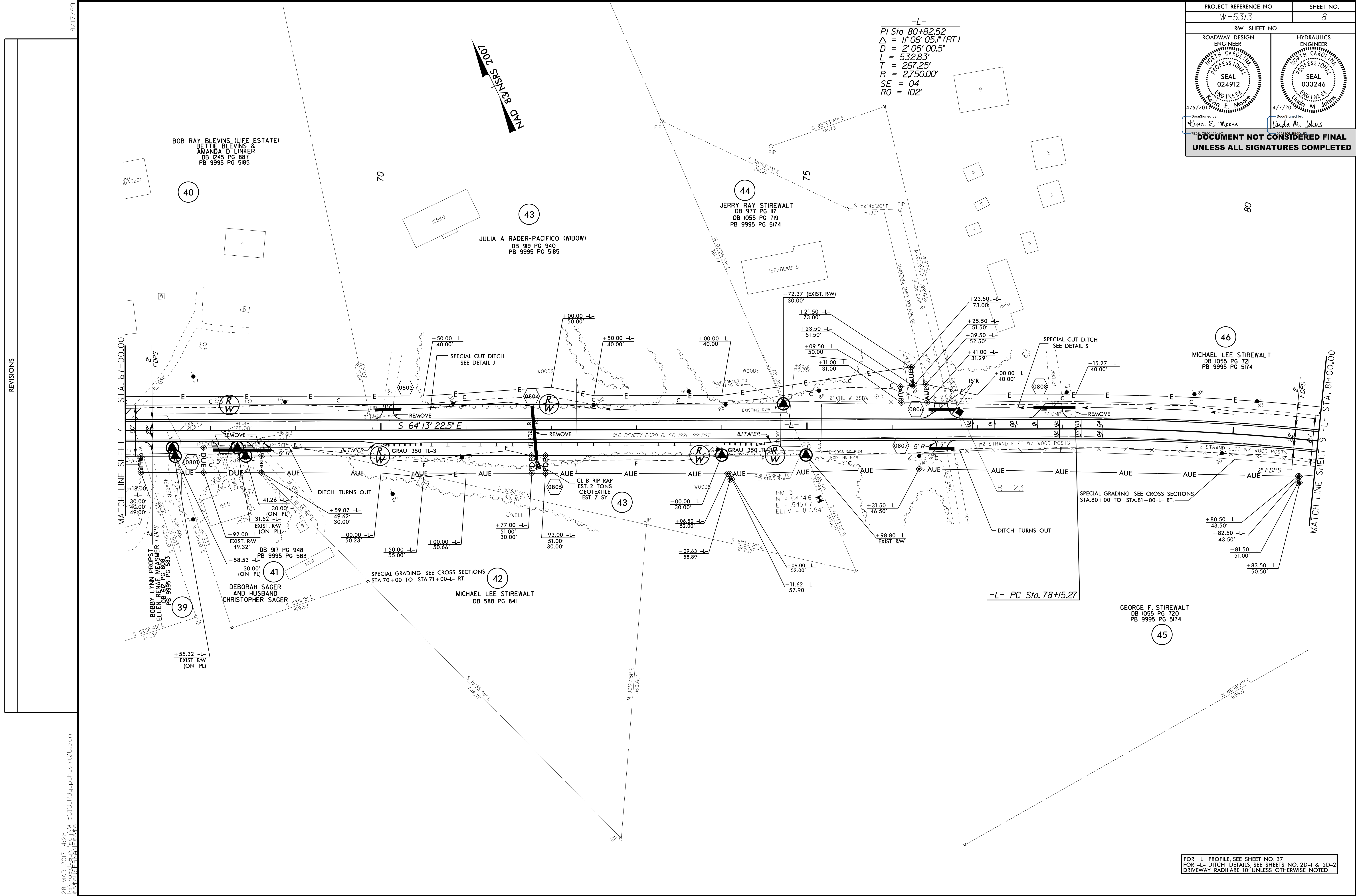


PROJECT REFERENCE NO. W-5313	SHEET NO. 8
RW SHEET NO.	
ROADWAY DESIGN ENGINEER KEVIN E. MOORE NORTH CAROLINA PROFESSIONAL SEAL 024912 4/5/2017	HYDRAULICS ENGINEER LINDA M. JOHNS NORTH CAROLINA PROFESSIONAL SEAL 033246 4/7/2017
DOCUMENT NOT CONSIDERED FINAL UNLESS ALL SIGNATURES COMPLETED	

-L-
 PI Sta 80+82.52
 Δ = 1' 06' 05" (RT)
 D = 2' 05' 00.5"
 L = 532.83'
 T = 267.25'
 R = 2,750.00'
 SE = 04
 RO = 102'



REVISIONS

8/17/99

28-MAR-2017 14:25 W-5313-Rdy_psh-sh408.dgn
 S:\PROJECTS\W-5313\REVISED\W-5313-Rdy_psh-sh408.dgn

FOR -L- PROFILE, SEE SHEET NO. 37
 FOR -L- DITCH DETAILS, SEE SHEETS NO. 2D-1 & 2D-2
 DRIVEWAY RADII ARE 10' UNLESS OTHERWISE NOTED