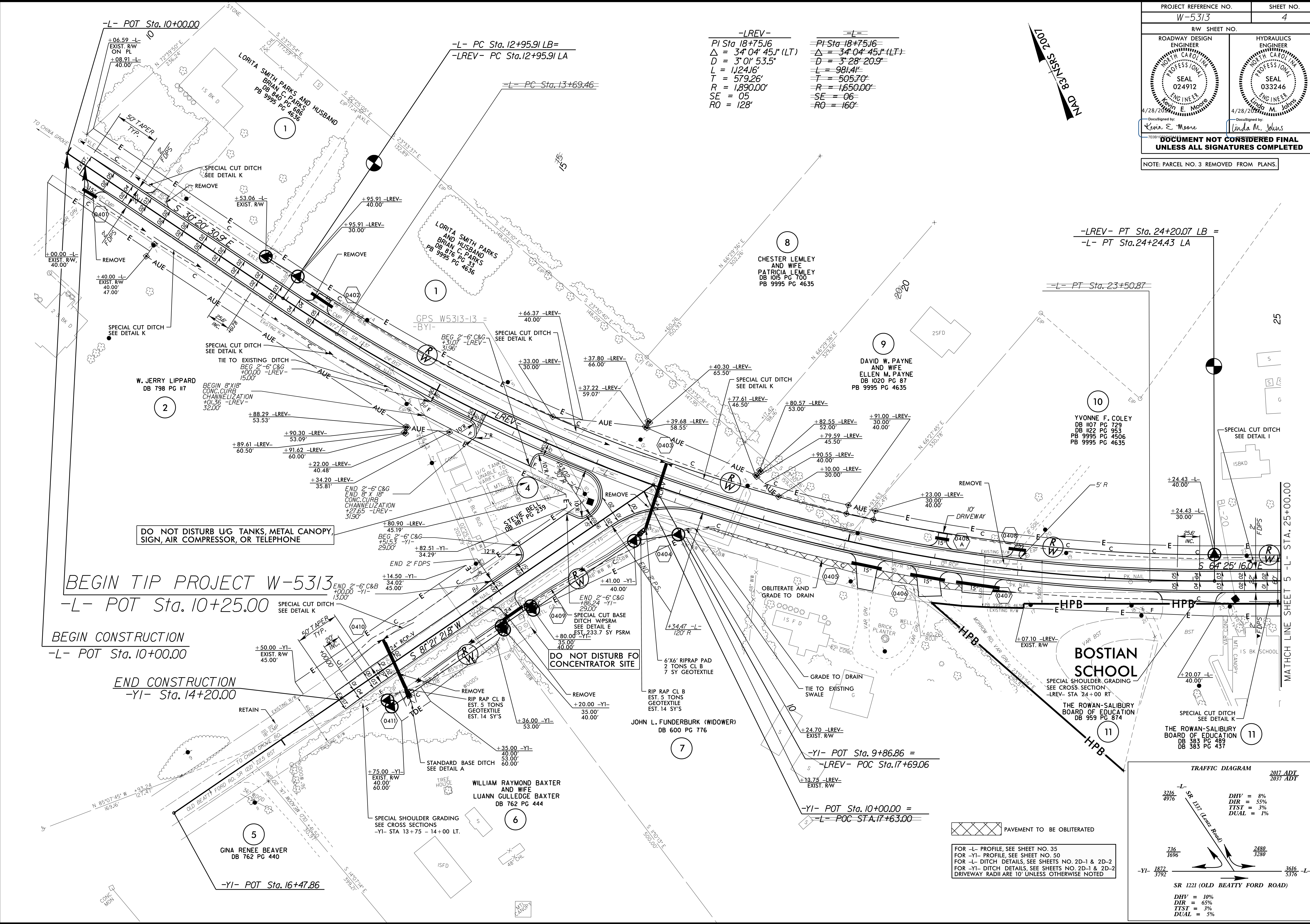
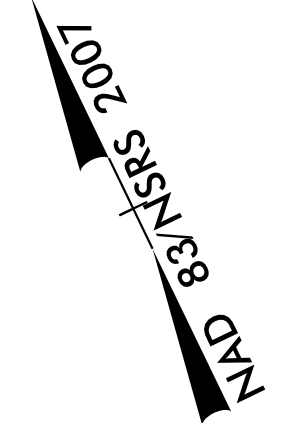


-LREV-
 PI Sta 18+75.16
 $\Delta = 34^{\circ} 04' 45.1''$ (LT)
 $D = 3^{\circ} 01' 53.5''$
 $L = 1124.16'$
 $T = 579.26'$
 $SE = 05$
 $RO = 128'$

-L-
 PI Sta 18+75.16
 $\Delta = 34^{\circ} 04' 45.1''$ (LT)
 $D = 3^{\circ} 28' 20.9''$
 $L = 981.41'$
 $T = 505.70'$
 $R = 1650.00'$
 $SE = 06$
 $RO = 160'$



BEGIN TIP PROJECT W-5313
 -L- POT Sta. 10+25.00

BEGIN CONSTRUCTION
 -L- POT Sta. 10+00.00

END CONSTRUCTION
 -YI- Sta. 14+20.00

-YI- POT Sta. 16+47.86

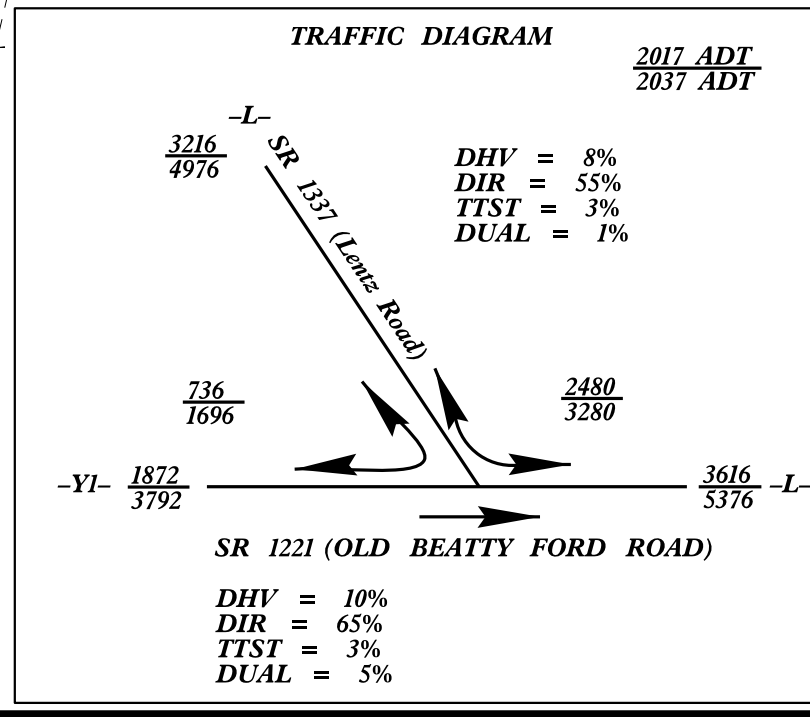
-LREV- PT Sta. 24+20.07 LB =
 -L- PT Sta. 24+24.43 LA

-L- PT Sta. 23+50.87

-YI- POT Sta. 9+86.86 =
 -LREV- POC Sta. 17+69.06

-YI- POT Sta. 10+00.00 =
 -L- POC STA. 17+63.00

FOR -L- PROFILE, SEE SHEET NO. 35
 FOR -YI- PROFILE, SEE SHEET NO. 50
 FOR -L- DITCH DETAILS, SEE SHEETS NO. 2D-1 & 2D-2
 FOR -YI- DITCH DETAILS, SEE SHEETS NO. 2D-1 & 2D-2
 DRIVEWAY RADII ARE 10' UNLESS OTHERWISE NOTED



REVISIONS

8/17/99

28-APR-2017 10:33 W-5313-Rdw-psh-sh-04.dgn
 9:54:50 PM