

STATE OF NORTH CAROLINA
DEPT. OF TRANSPORTATION
DIVISION OF HIGHWAYS
RALEIGH, N.C.

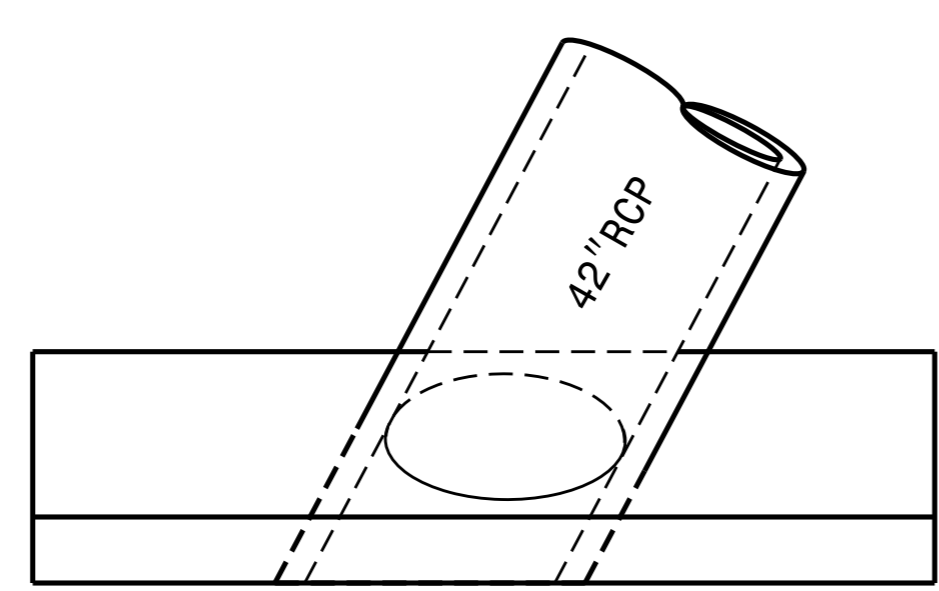
ENGLISH DETAIL DRAWING FOR
**CONCRETE ENDWALL FOR
60° SKEW
42" PIPE CULVERT**

SHEET 1 OF 1
838D01

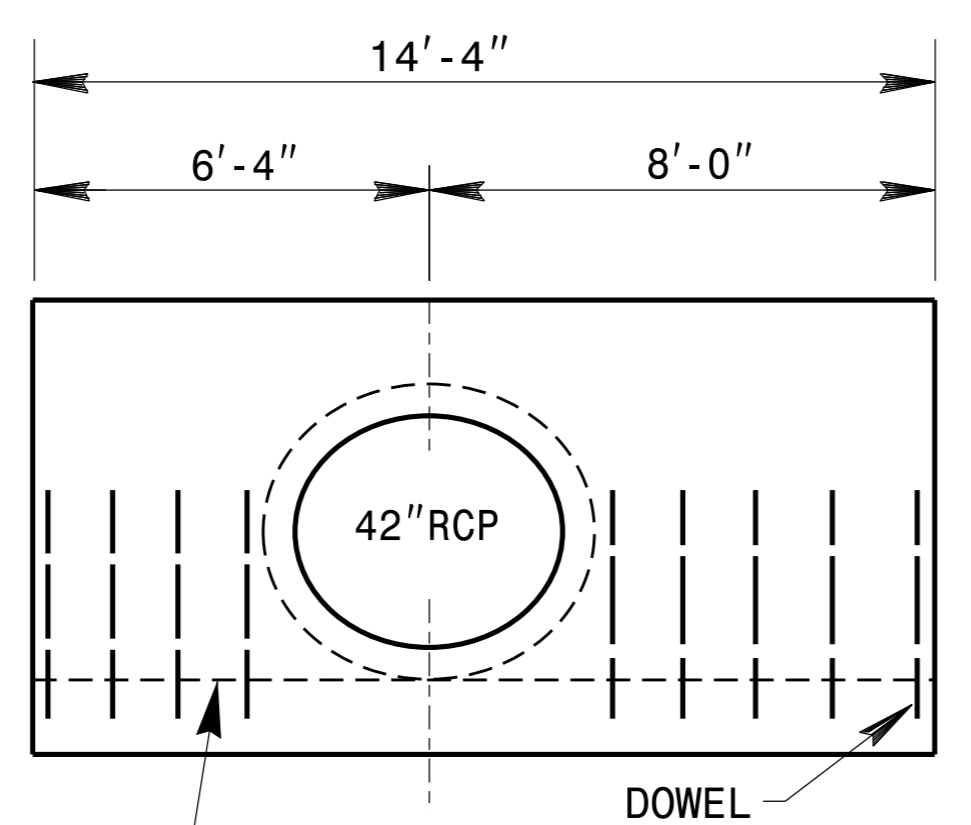
STATE OF NORTH CAROLINA
DEPT. OF TRANSPORTATION
DIVISION OF HIGHWAYS
RALEIGH, N.C.

ENGLISH DETAIL DRAWING FOR
**CONCRETE ENDWALL FOR
60° SKEW
42" PIPE CULVERT**

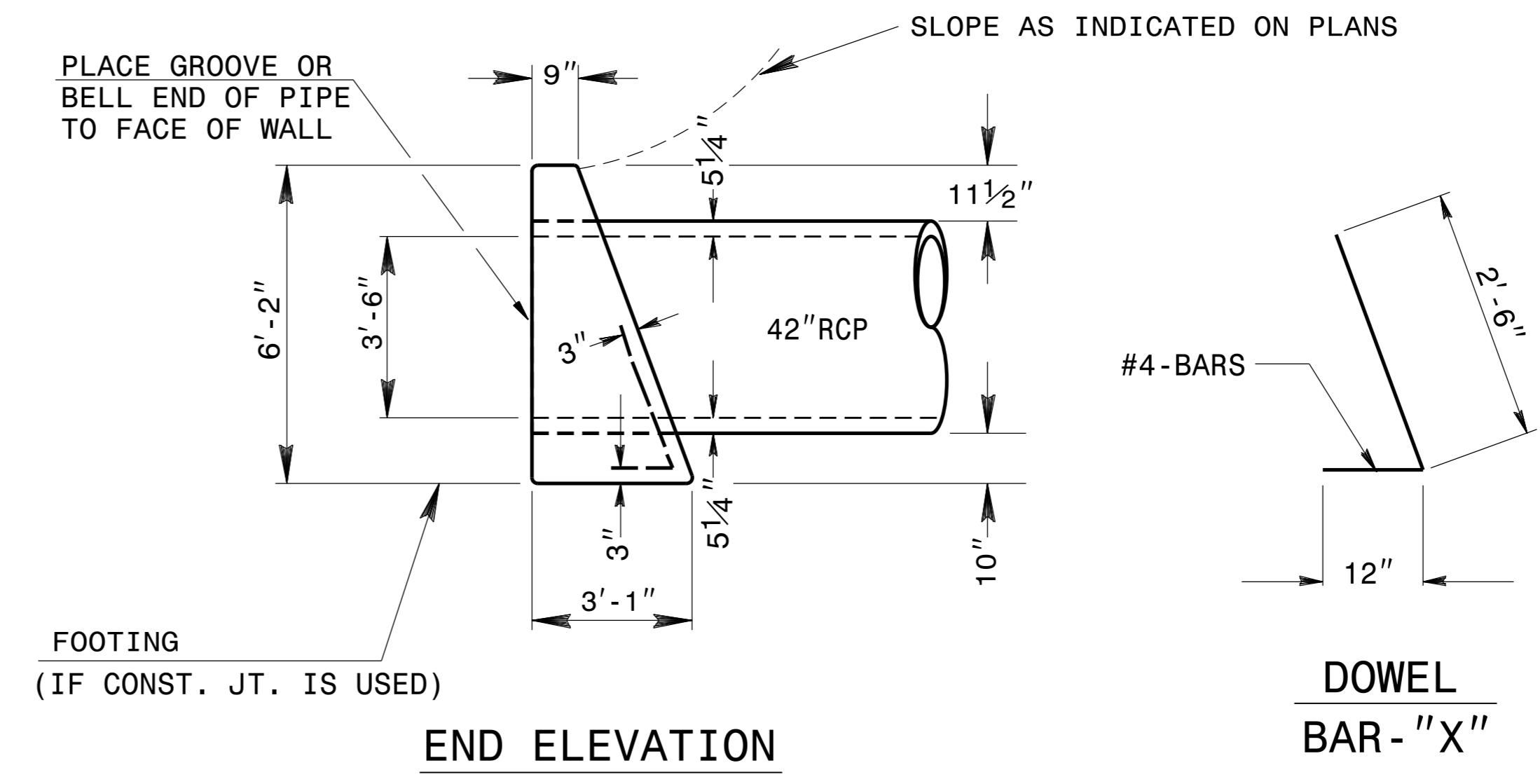
SHEET 1 OF 1
838D01



PLAN



ELEVATION



END ELEVATION

DOWEL
BAR - "X"

STEEL IN ENDWALL WITH REINFORCED CONCRETE PIPE		
LOC.	"X"	"Y"
TOP		42
LEFT	4	
RIGHT	5	
TOTAL LBS.	63	

CONCRETE - 6 CY

GENERAL NOTES:
 -CHAMFER ALL CORNERS 1".
 -PLACE 2 #6 "Y" BARS IN THE TOP OF ENDWALL WITH A MINIMUM OF 3" COVER AND A LENGTH OF 6" LESS THAN ENDWALL LENGTH.
 -USE FORMS TO CONSTRUCT THE BOTTOM SLAB.
 -WALL THICKNESS (T) SHOWN IS NOT TO BE INTERPRETED TO MEAN THE THICKNESS ACCEPTABLE, BUT IS USED IN COMPUTING ENDWALL QUANTITIES.
 -WHEN THE CONTRACTOR ELECTS TO USE A CONSTRUCTION JOINT AT THE BOTTOM OF THE PIPE, PLACE BAR 'X' DOWELS IN THE BASE AS SHOWN ON PLANS. SPACING OF BARS IS TO BE APPROXIMATELY 12" CENTERS UNLESS OTHERWISE DIRECTED BY THE ENGINEER.
 -WHEN THE CONTRACTOR ELECTS TO USE A CONSTRUCTION JOINT AT THE BOTTOM OF THE PIPE AND POUR THE BASE SEPARATELY THE POUR SHALL BE LEFT ROUGH.
 -USE CLASS "B" CONCRETE.



DESIGN SERVICES UNIT
STANDARDS AND SPECIAL DESIGN
Office 919-250-4128 FAX 919-250-4119

SEE PLATE FOR TITLE

ORIGINAL BY: T.S. Spell DATE: 8-16-00
 MODIFIED BY: rnbritt DATE: 03-11-16
 CHECKED BY: DATE:
 FILE SPEC.: ;details/nbritt/english/hydro/w5313_42rcp_70sk.dgn

DOCUMENT NOT CONSIDERED FINAL
UNLESS ALL SIGNATURES COMPLETED

5/14/99