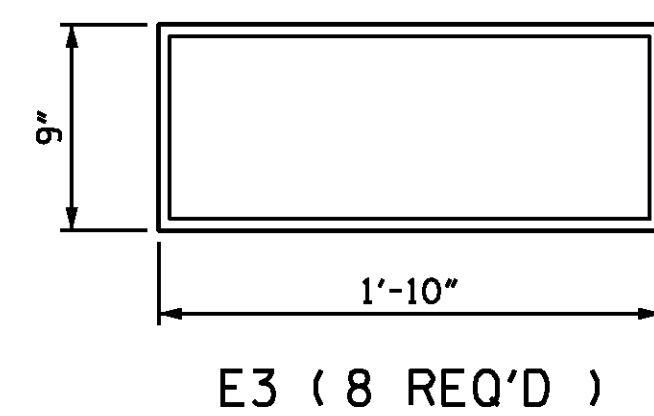
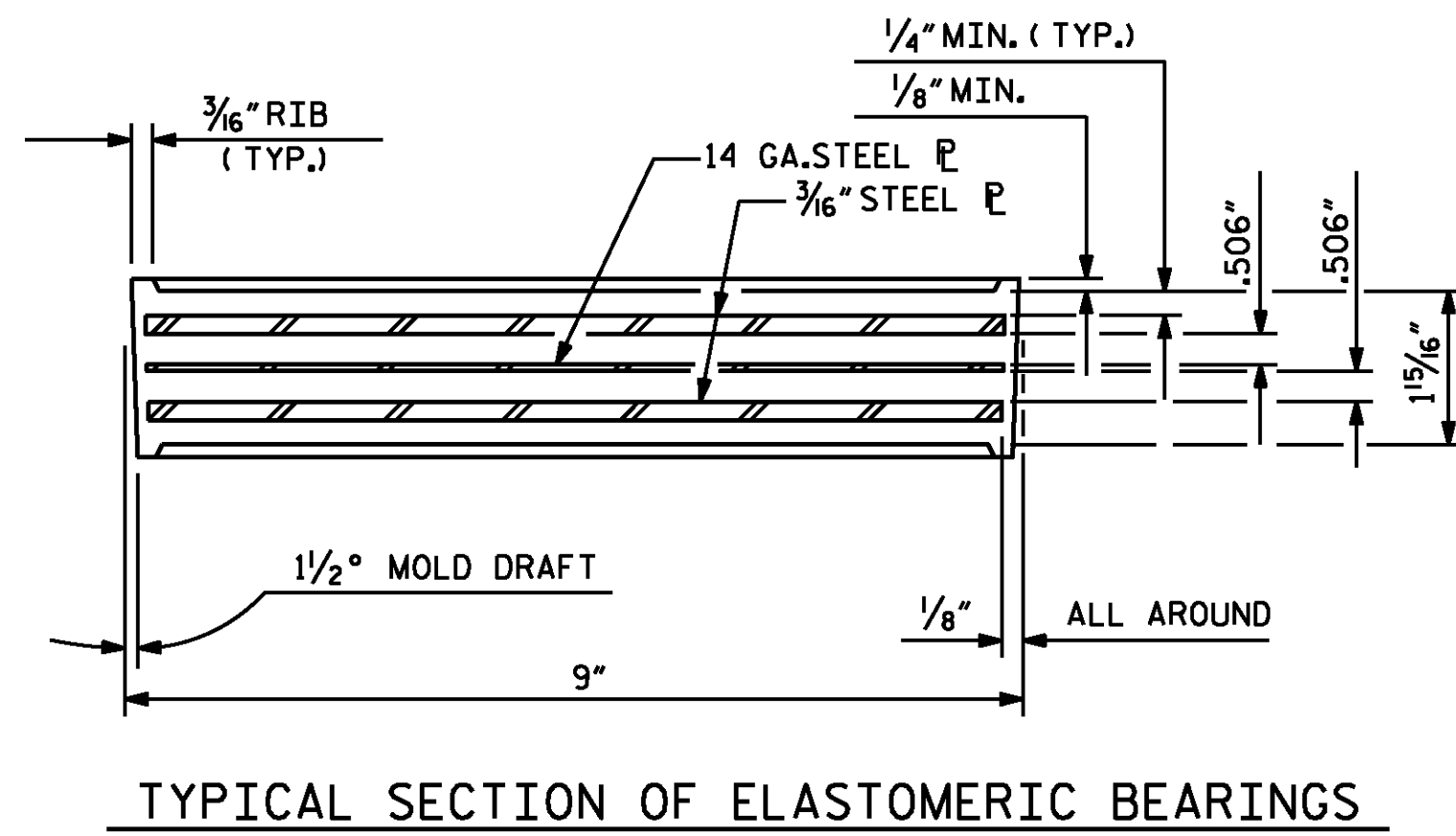
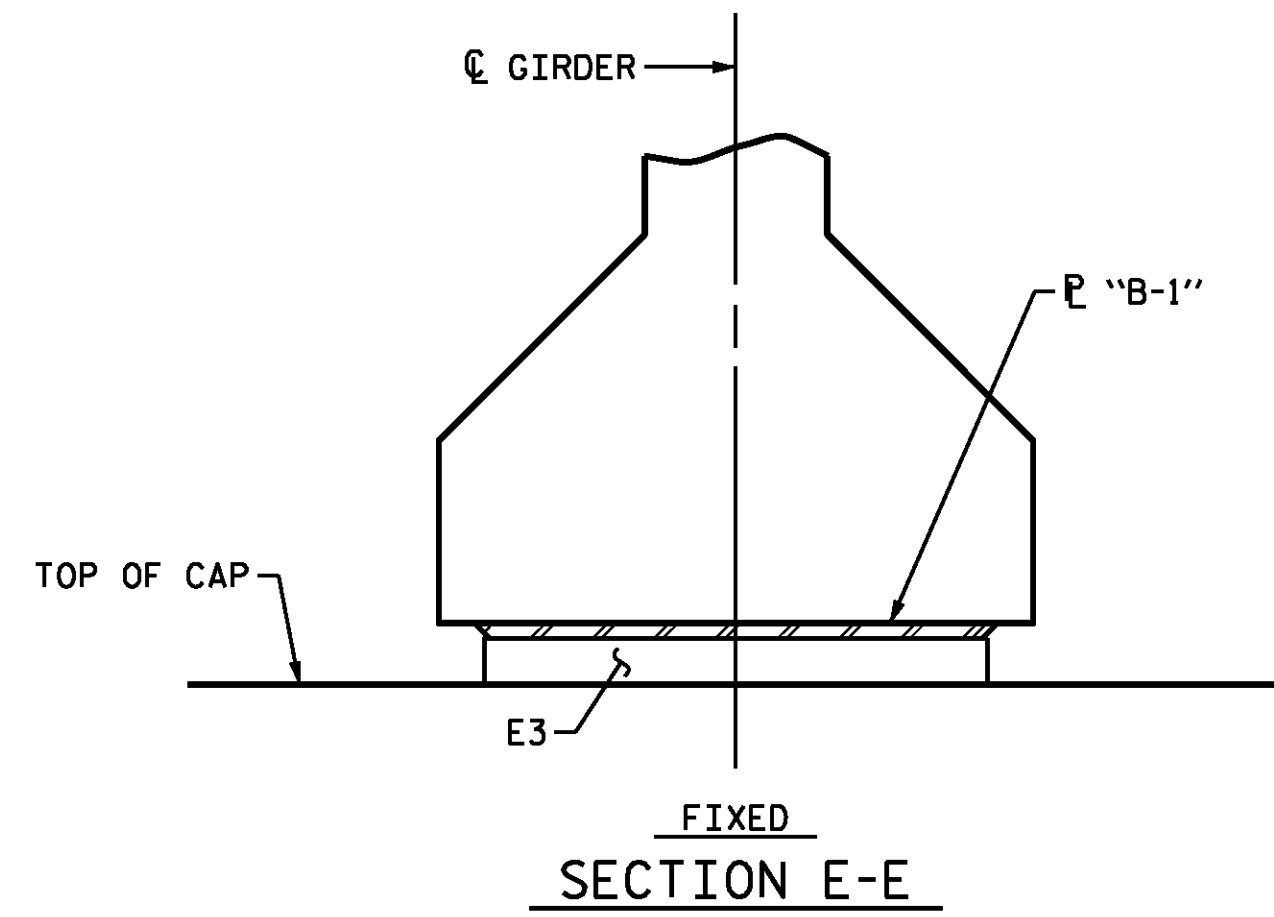


NOTES

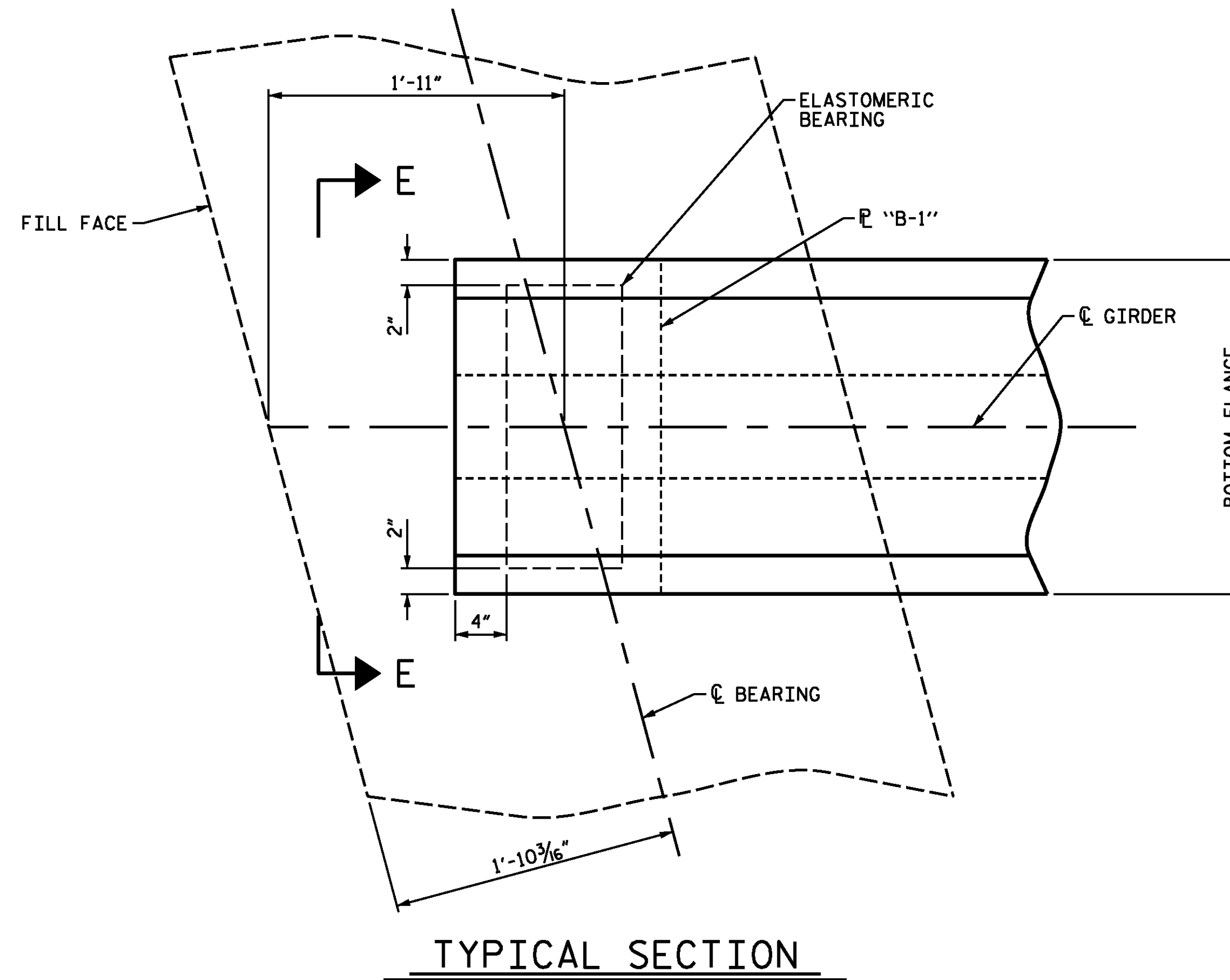
THE ELASTOMER IN THE STEEL REINFORCED BEARINGS SHALL HAVE A SHEAR MODULUS OF 0.160 KSI, IN ACCORDANCE WITH AASHTO M251.

FOR STEEL REINFORCED ELASTOMERIC BEARINGS, SEE SPECIAL PROVISIONS.



PLAN VIEW OF ELASTOMERIC BEARING

ELASTOMERIC BEARINGS
(FOR INTEGRAL END BENT)



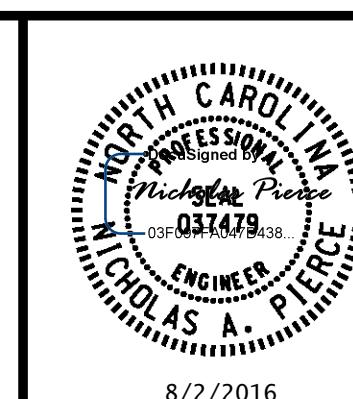
TYPICAL SECTION

MAXIMUM ALLOWABLE SERVICE LOADS	
D.L.+L.L. (NO IMPACT)	
TYPE IV	225 k

PROJECT NO. B-4616
ROBESON COUNTY
 STATION: 31+55.47 -L-

DESIGNED BY:	C.J. HOWARD	DATE :	04/2016
DRAWN BY:	M.J. OSTRISHKO	DATE :	04/2016
CHECKED BY:	N.A. PIERCE	DATE :	05/2016
DESIGN ENGINEER OF RECORD:	N.A. PIERCE	DATE :	06/2016

WSP
PARSONS BRINCKERHOFF
 434 FAYETTEVILLE STREET
 SUITE 1500
 RALEIGH, NC 27601
 LICENSE NO. F-0165



STATE OF NORTH CAROLINA
 DEPARTMENT OF TRANSPORTATION
 RALEIGH
 SUPERSTRUCTURE
BEARING DETAILS
 PRESTRESSED CONCRETE GIRDER
 FOR INTEGRAL END BENT

REVISIONS						SHEET NO.
NO.	BY:	DATE:	NO.	BY:	DATE:	S1-14
1			3			TOTAL SHEETS
2			4			25

DOCUMENT NOT CONSIDERED FINAL UNLESS ALL SIGNATURES COMPLETED