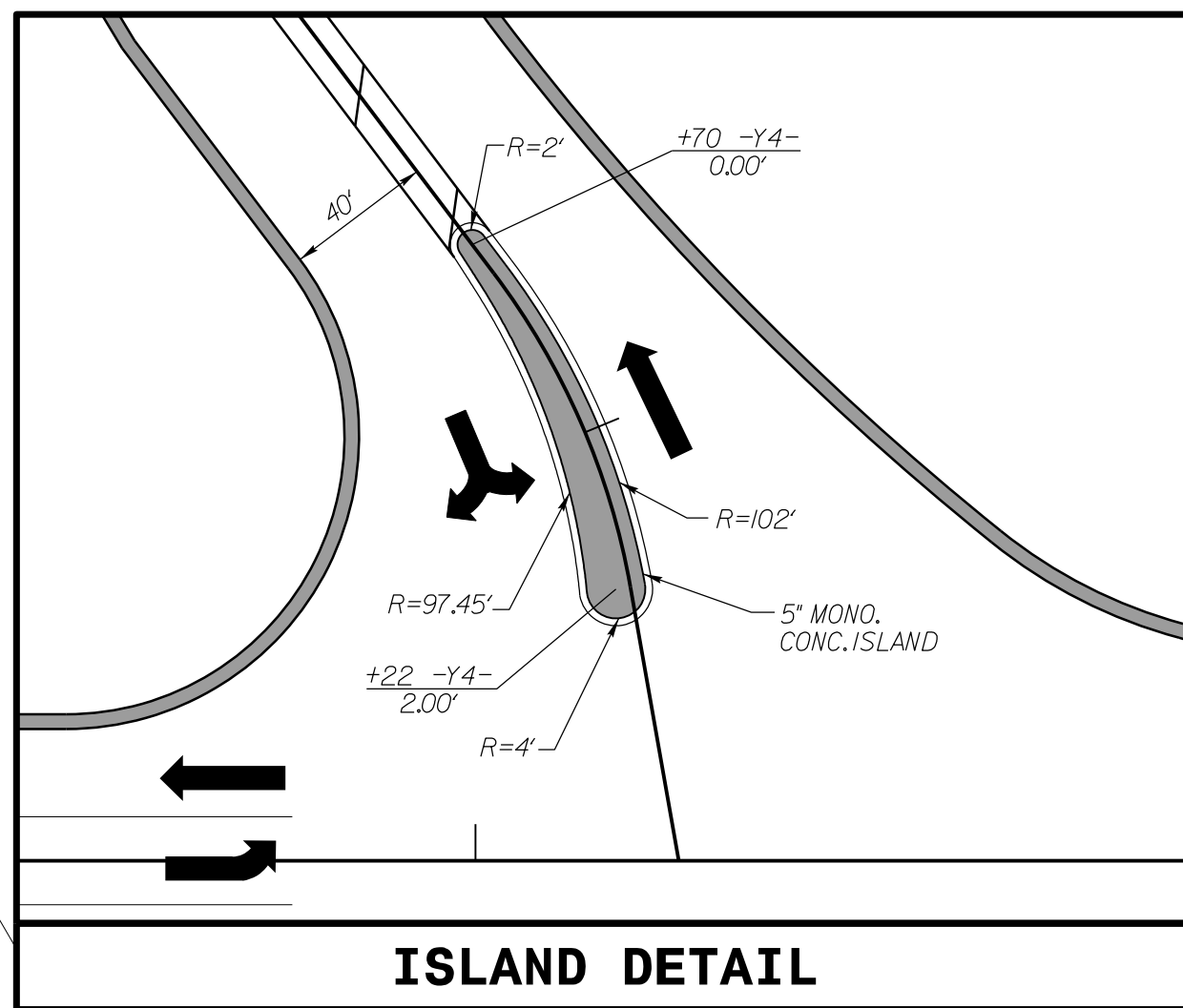
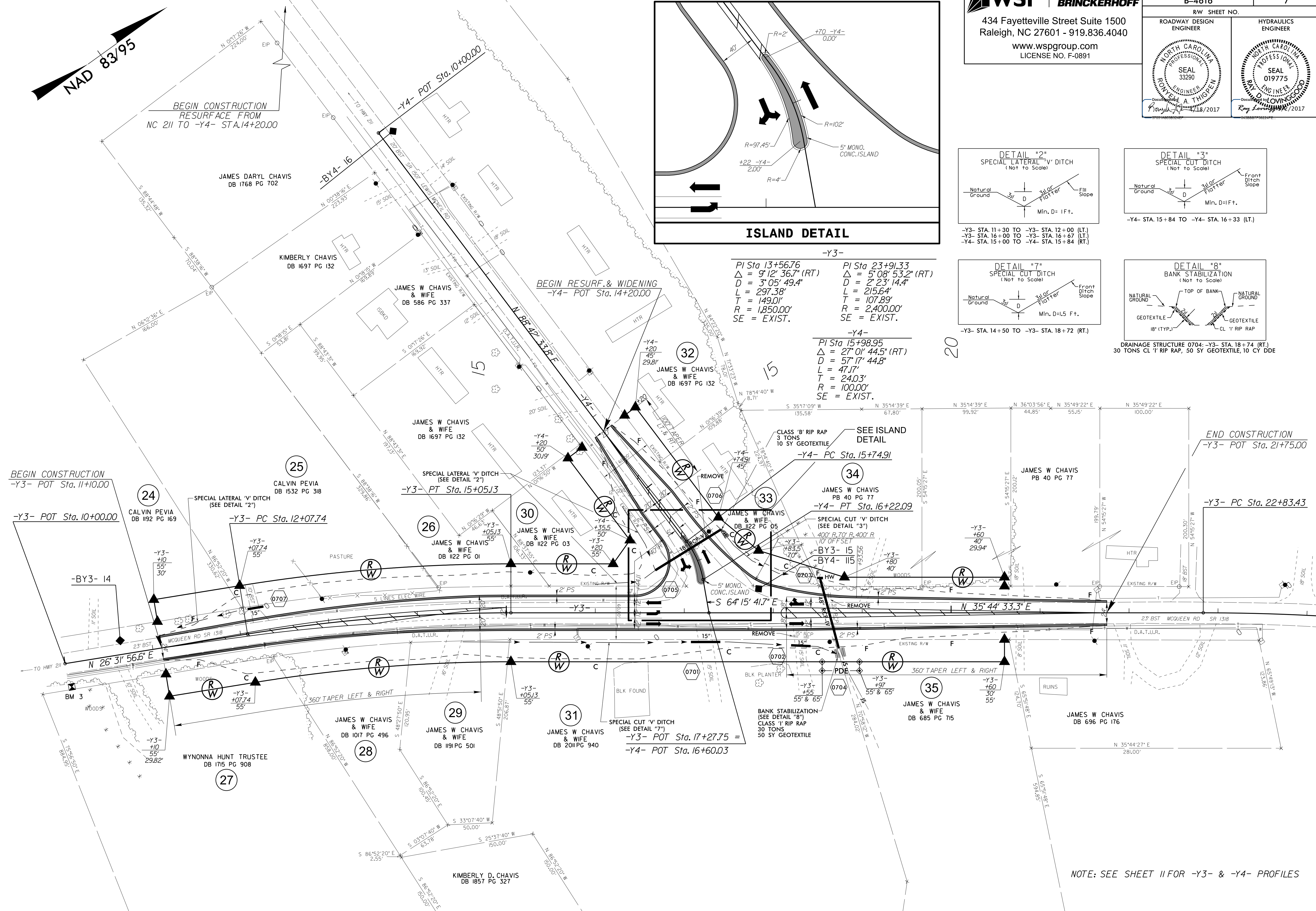


**WSP** **PARSONS BRINCKERHOFF**  
 434 Fayetteville Street Suite 1500  
 Raleigh, NC 27601 - 919.836.4040  
 www.wspgroup.com  
 LICENSE NO. F-0891

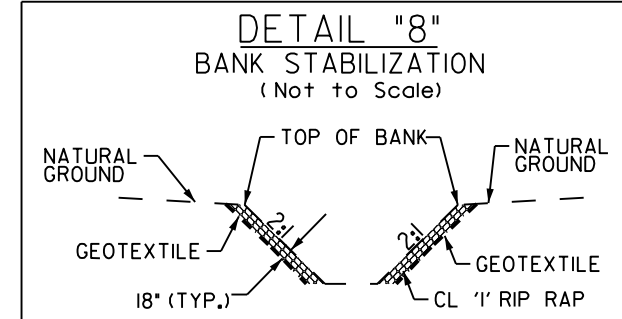
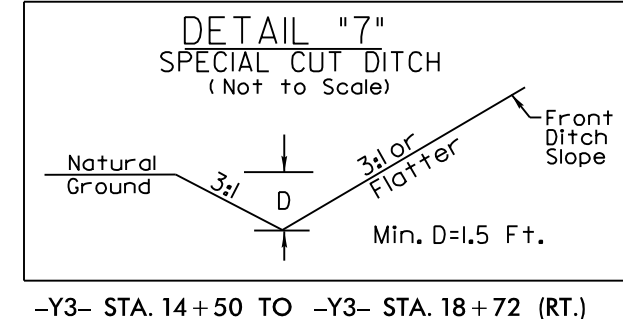
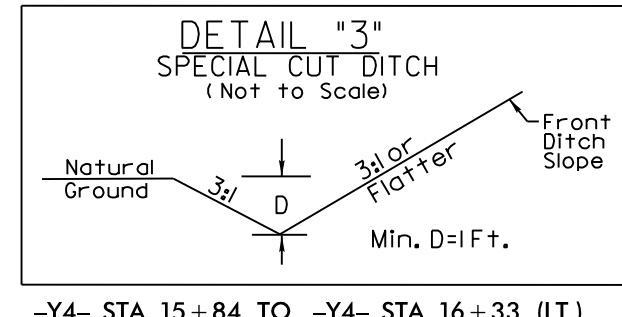
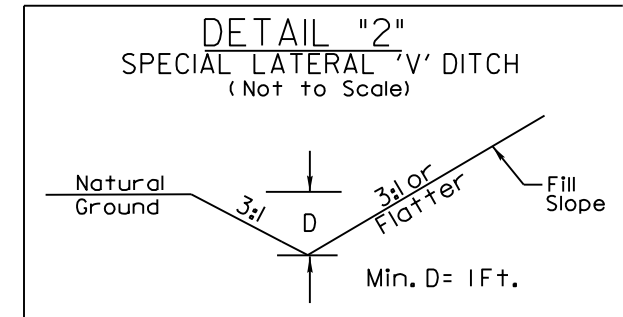
|  |                       |
|--|-----------------------|
| PROJECT REFERENCE NO.<br><b>B-4616</b> | SHEET NO.<br><b>7</b> |
| RW SHEET NO.                           |                       |
| ROADWAY DESIGN ENGINEER                | HYDRAULICS ENGINEER   |
|  |                       |



**-Y3-**  
 PI Sta 13+56.76  
 $\Delta = 9' 12' 36.7''$  (RT)  
 $D = 3' 05' 49.4''$   
 $L = 297.38'$   
 $T = 149.01'$   
 $R = 1,850.00'$   
 SE = EXIST.

**-Y3-**  
 PI Sta 23+91.33  
 $\Delta = 5' 08' 53.2''$  (RT)  
 $D = 2' 23' 14.4''$   
 $L = 215.64'$   
 $T = 107.89'$   
 $R = 2,400.00'$   
 SE = EXIST.

**-Y4-**  
 PI Sta 15+98.95  
 $\Delta = 27' 01' 44.5''$  (RT)  
 $D = 57' 17' 44.8''$   
 $L = 47.17'$   
 $T = 24.03'$   
 $R = 100.00'$   
 SE = EXIST.



DRAINAGE STRUCTURE 0704: -Y3- STA. 18+74 (RT).  
 30 TONS CL '1' RIP RAP, 50 SY GEOTEXTILE, 10 CY DDE

NOTE: SEE SHEET 11 FOR -Y3- & -Y4- PROFILES