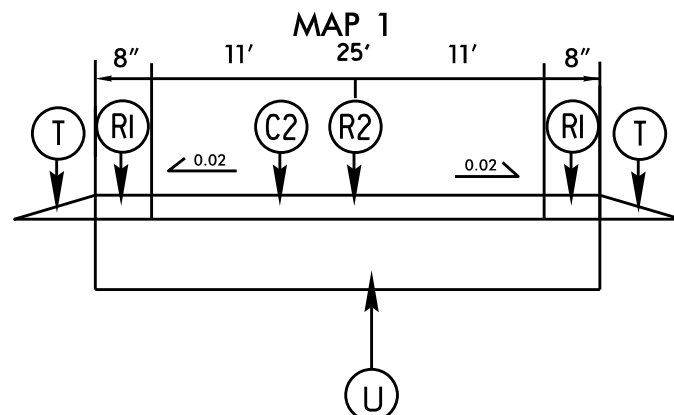
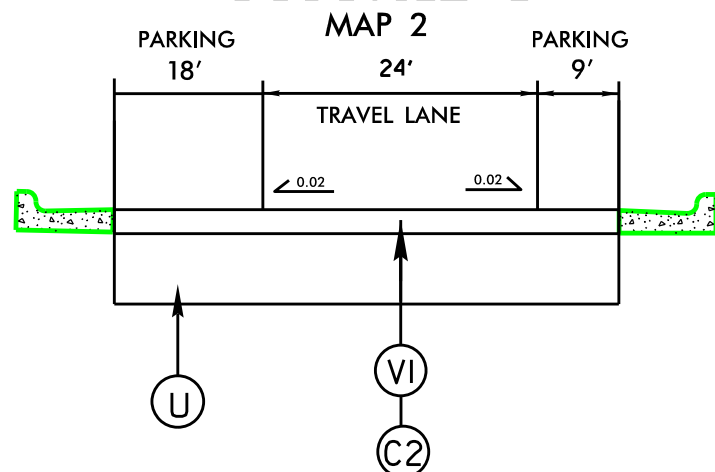


PROJECT REFERENCE NO.		SHEET NO.
2018CPT.1.01.10751.1ETC		18
STATE PROJECT	F.A. PROJECT NO.	DESCRIPTION

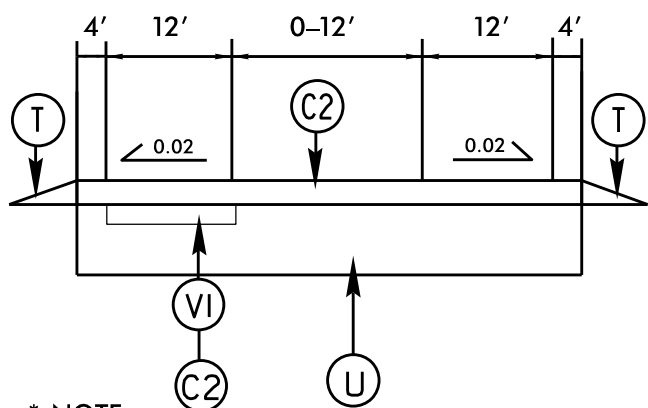
### TYPICAL 1



### TYPICAL 2

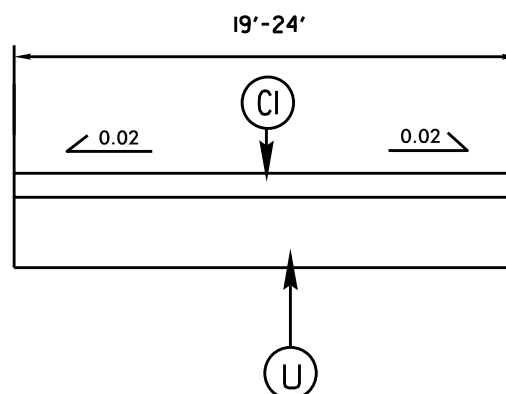


### TYPICAL 3

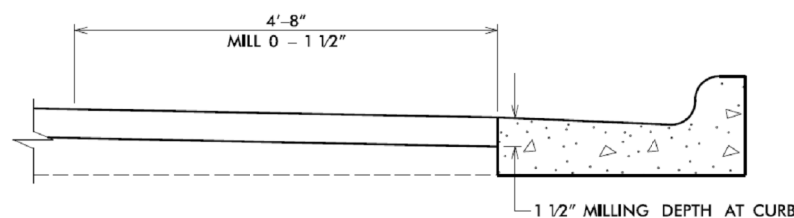


- \* NOTE**
- \* CENTER TURN LANE PRESENT FOR APPROX. 0.4 MILES
  - \* PAVED SHOULDER DOES NOT EXIST IN ALL LOCATIONS
  - \* SEVERAL BUSINESSES AND PAVED PARKING LOTS ALONG MAP TIE DOWNS INTO PARKING LOTS AND DRIVEWAYS MAY EXTEND +/- 8' FROM EDGE OF PAVEMENT.

### TYPICAL 4

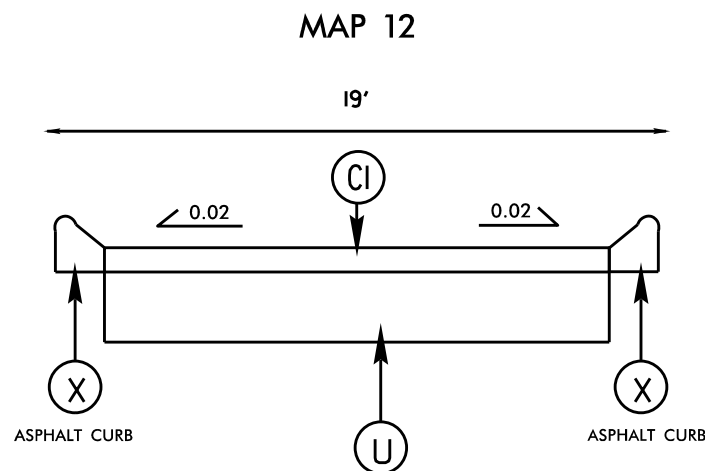


MAP #4-#11      MAP #16-#17  
 MAP #13-#14      MAP #19-#21



**\* NOTE** MILLING AT EXISTING CURB MILL AS DIRECTED BY ENGINEER. WILL BE PAID FOR AS INCIDENTAL MILLING.

### TYPICAL 5



- \* NOTE**
- REMOVE EXISTING ASPHALT CURB AT LOCATIONS DIRECTED BY THE ENGINEER
  - \* PLACE PROPOSED ASPHALT CURB WITHIN 72 HOURS OF REMOVAL OF EXISTING CURB AND PRIOR TO PLACEMENT OF FINAL SURFACE COURSE.

## SURFACING SCHEDULE

ITEM NO	DESCRIPTION
C1	PROP. APPROX. 1 1/4" ASPHALT CONCRETE SURFACE COURSE, TYPE SF9.5A, AT AN AVERAGE RATE OF 137.5 LBS. PER SQ. YD
C2	PROP. APPROX. 1 1/2" ASPHALT CONCRETE SURFACE COURSE, TYPE S9.5B, AT AN AVERAGE RATE OF 168 LBS. PER SQ. YD
D1	PROP. ASPHALT CONCRETE INTERMEDIATE COURSE (WEDGING) TYPE I19.0B, AT VARIABLE DEPTH AT LOCATIONS AS DIRECTED BY PROJECT ENGINEER (114 lbs/sy per 1" depth)
R1	MILLED EDGELINE RUMBLE STRIPS 1/2" IN DEPTH 8" WIDE IN LOCATIONS AS DIRECTED BY PROJECT ENGINEER
R2	MILLED CENTERLINE RUMBLE STRIPS 12" WIDTH 1/2" IN DEPTH IN LOCATIONS AS DIRECTED BY PROJECT ENGINEER
VI	MILLED ASPHALT PAVEMENT 1 1/2" IN DEPTH IN LOCATIONS AS DIRECTED BY PROJECT ENGINEER
T	SHOULDER RECONSTRUCTION
U	EXISTING ASPHALT
X	ASPHALT CURB. *SEE SPECIAL PROVISION