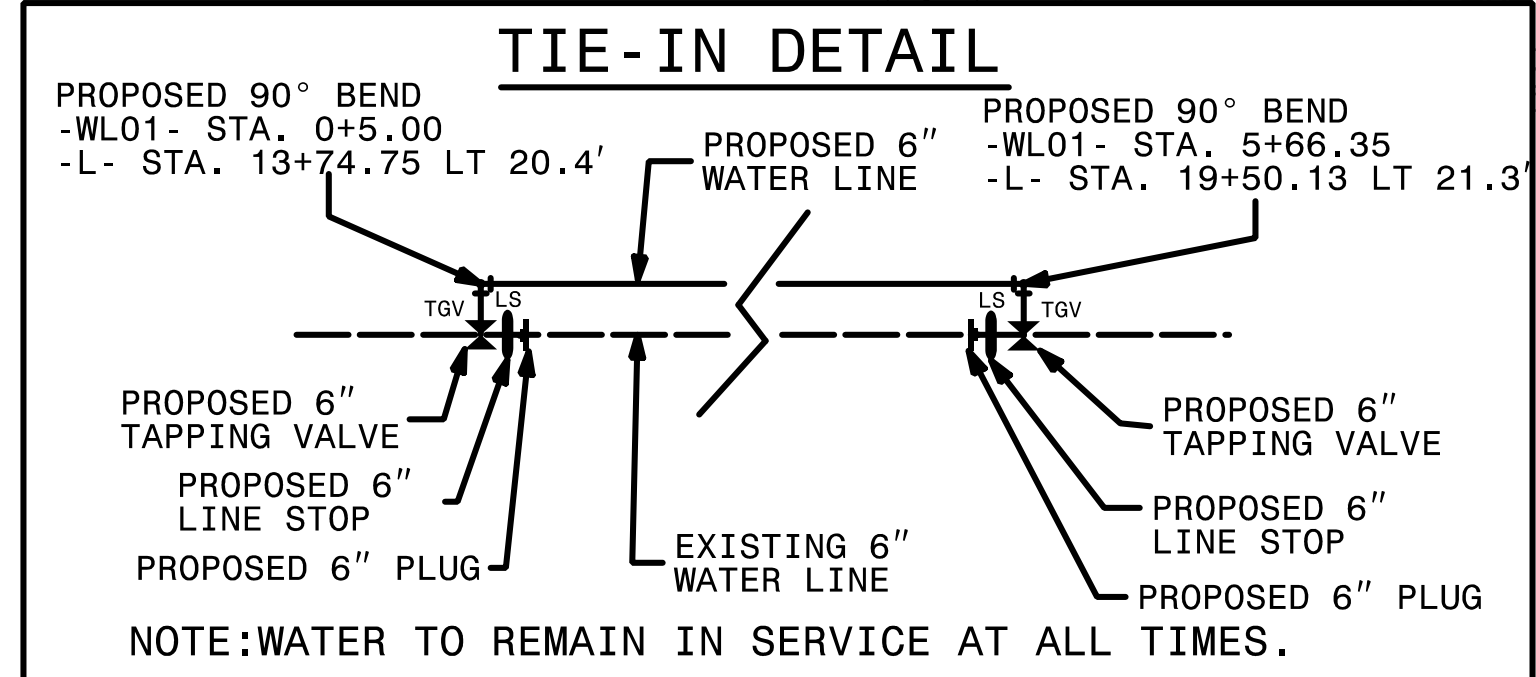
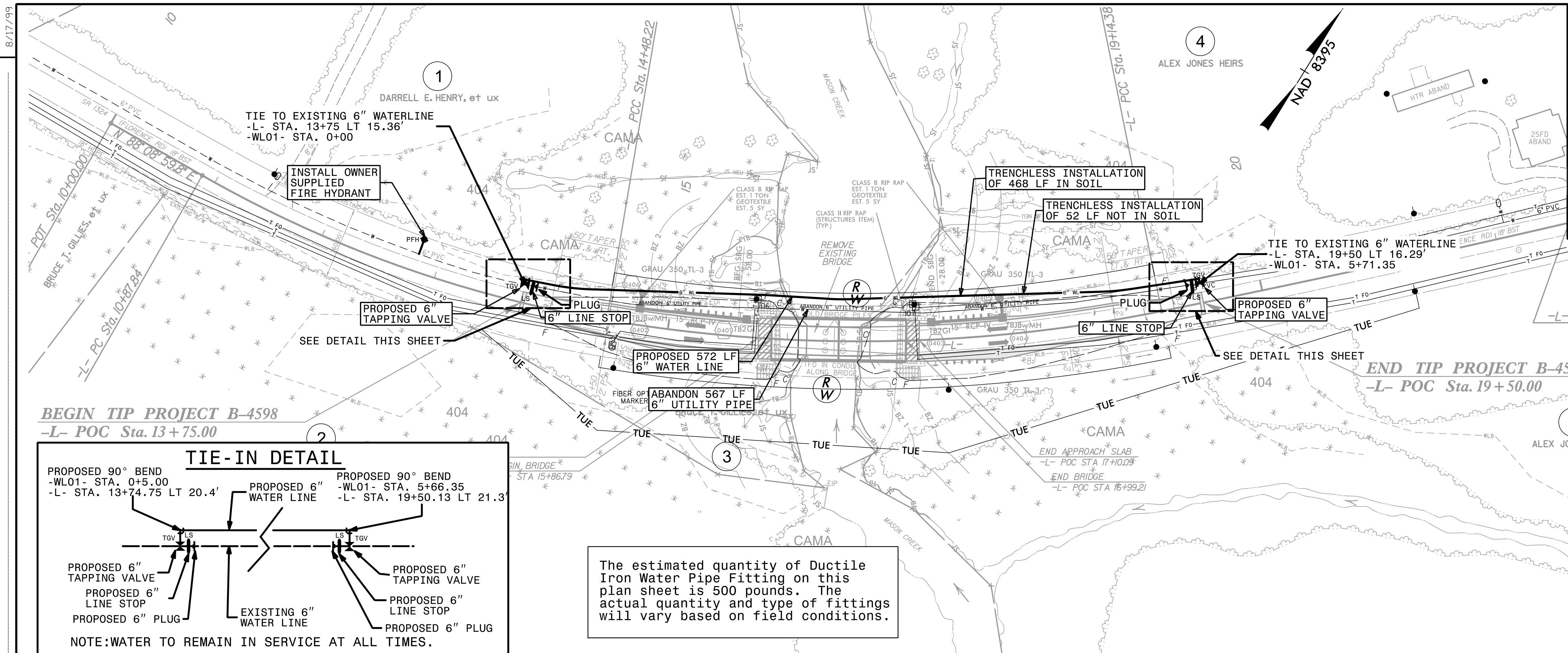
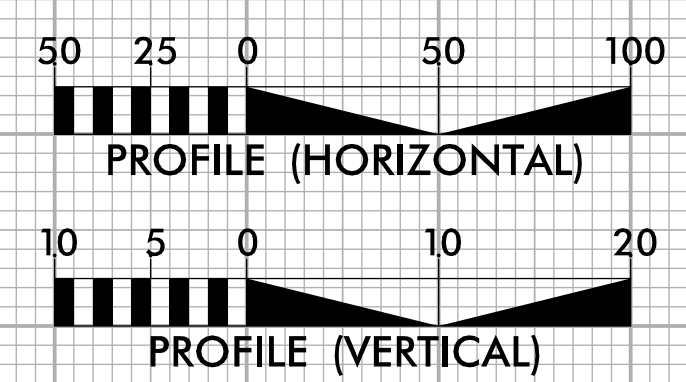
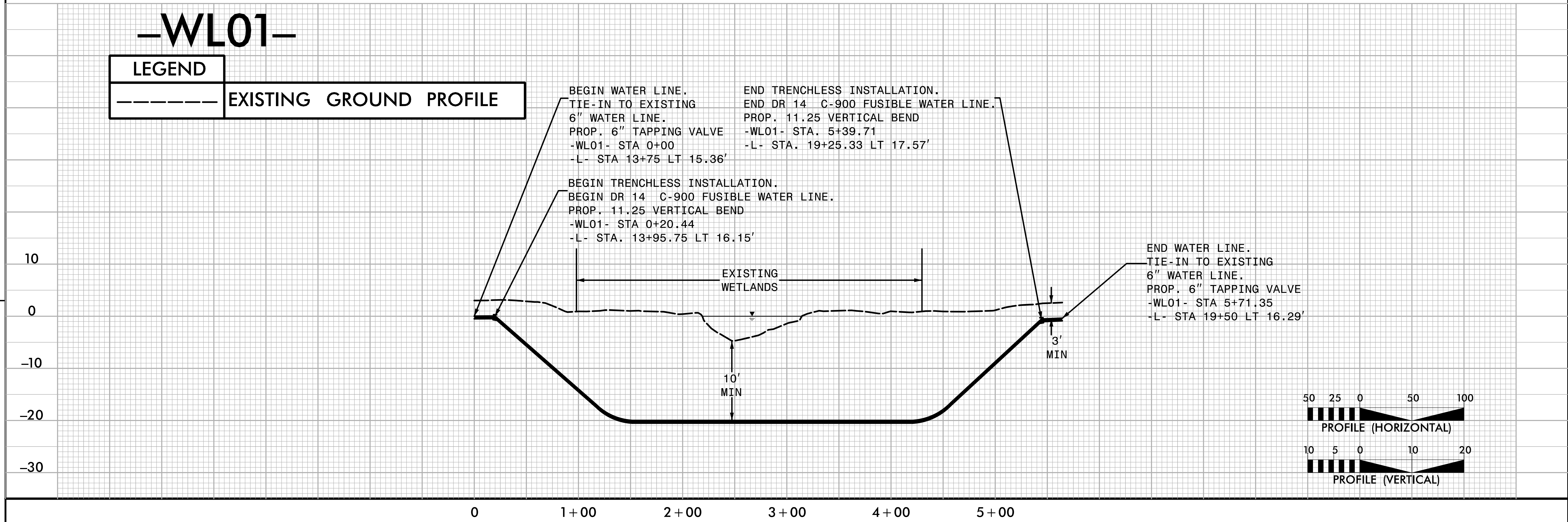
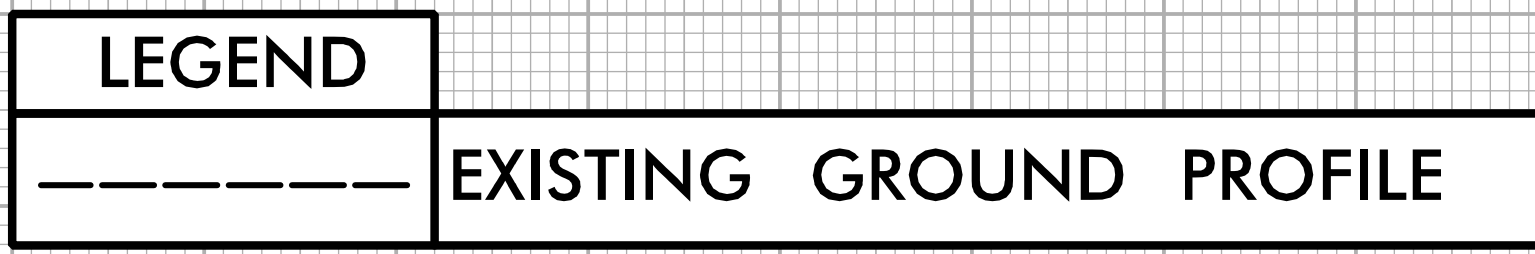


PROJECT REFERENCE NO. B-4598	SHEET NO. UC-4
DESIGNED BY: AHC	
DRAWN BY: AHC	
CHECKED BY: BCH	
APPROVED BY: BH	
REVISED:	3/1/2017
NORTH CAROLINA DEPARTMENT OF TRANSPORTATION UTILITIES ENGINEERING SEC. PHONE: (919) 707-6690 FAX: (919) 250-4151	
UTILITY CONSTRUCTION PLANS ONLY	
DOCUMENT NOT CONSIDERED FINAL UNLESS ALL SIGNATURES COMPLETED	
 TGS ENGINEERS 804-C N. LAFAYETTE ST SHELBY, NC 28150 PH (704) 476-9003 CORP. LICENSE NO.: C-0275	



The estimated quantity of Ductile Iron Water Pipe Fitting on this plan sheet is 500 pounds. The actual quantity and type of fittings will vary based on field conditions.

-WL01-



REVISIONS

UTILITY
CONSTRUCTION