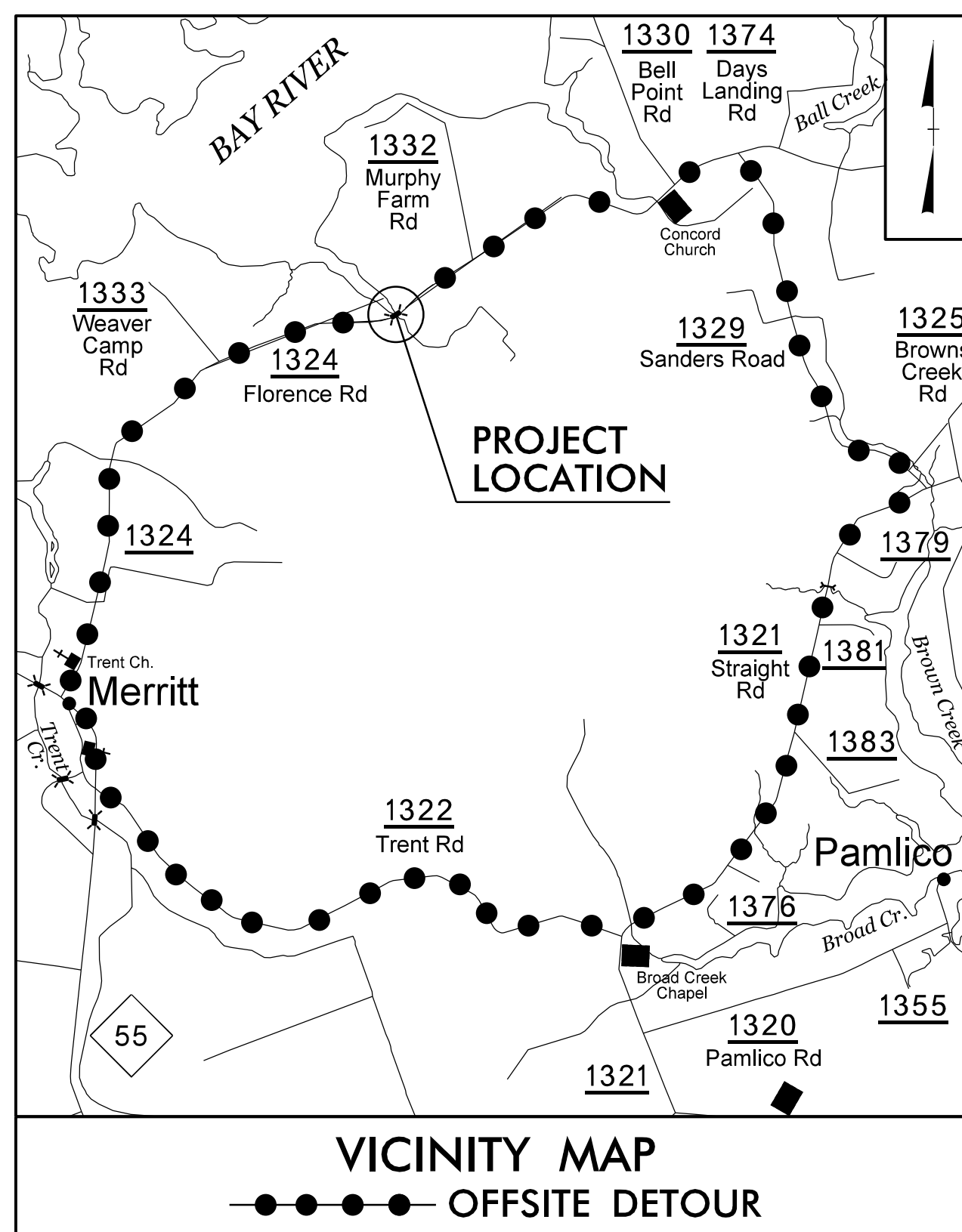
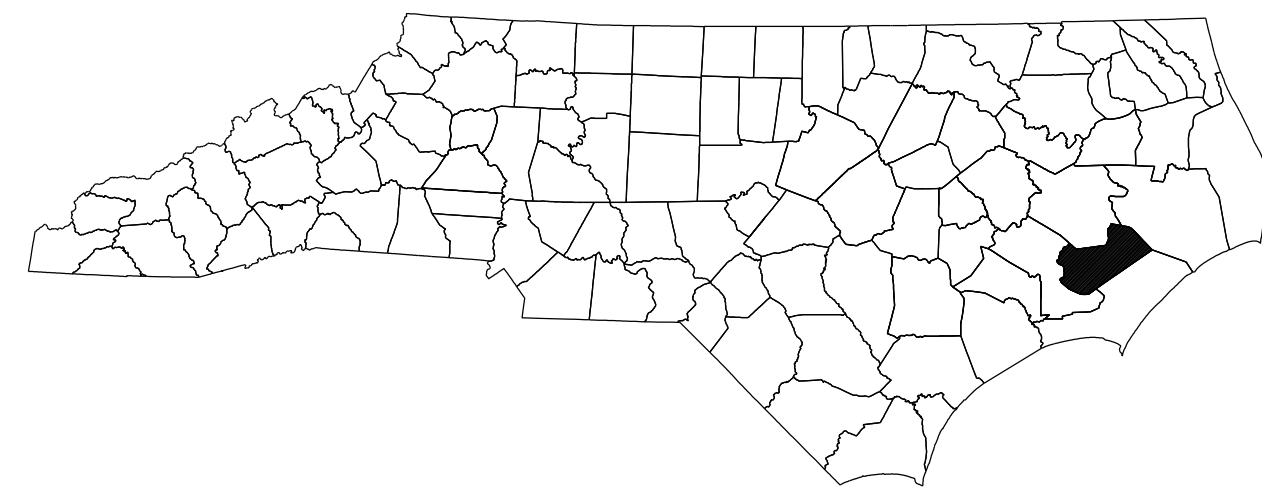


STATE OF NORTH CAROLINA
DIVISION OF HIGHWAYS

TRANSPORTATION MANAGEMENT PLAN

PAMLICO COUNTY



**LOCATION: REPLACE BRIDGE 16 OVER MASON CREEK
ON SR 1324 (FLORENCE RD.)**

INDEX OF SHEETS

SHEET NO.	TITLE
TMP-1	TITLE SHEET, VICINITY MAP, AND INDEX OF SHEETS
TMP-1A	LIST OF APPLICABLE ROADWAY STANDARD DRAWINGS, LEGEND, GENERAL NOTES, AND PHASING
TMP-2	SPECIAL SIGN DESIGN
TMP-3	TEMPORARY TRAFFIC CONTROL - OFF-SITE DETOUR
TMP-4	TEMPORARY TRAFFIC CONTROL - DETOUR SIGNS

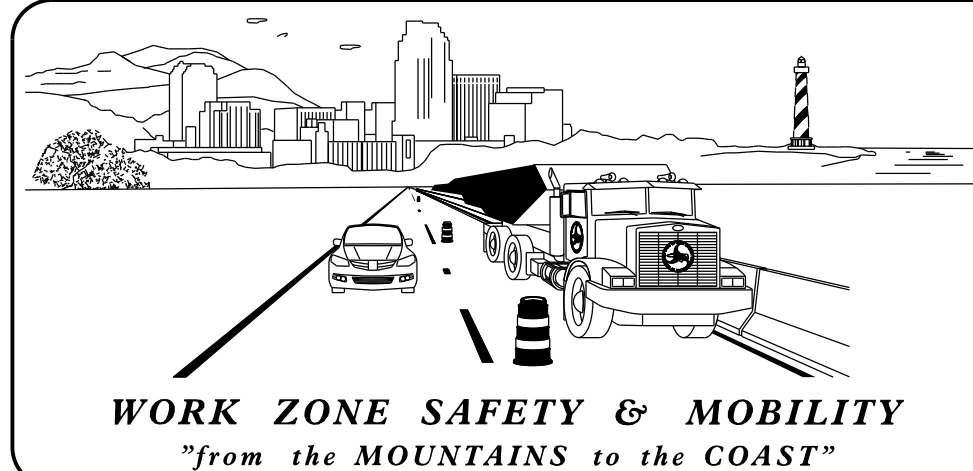
SHEET NO.

TMP-1

2/3/2017 6:\Transportation\Traffic\Curr\NCDOT 10 Bridges TMP\00053585 - B-4598 TMP Bridge Replace 585\TrafficControl\TCP\B-4598 TCP 01.dgn User:STOU7940

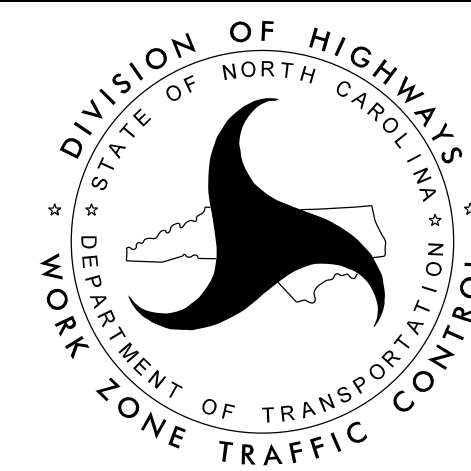
ATKINS 1616 EAST MILLBROOK ROAD, SUITE 160
RALEIGH, NORTH CAROLINA 27609
(919) 876-6888 NCBEES #F-0326

**DOCUMENT NOT CONSIDERED FINAL
UNLESS ALL SIGNATURES COMPLETED**



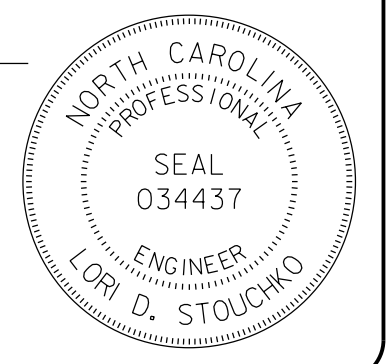
N.C.D.O.T. WORK ZONE TRAFFIC CONTROL
1561 MAIL SERVICE CENTER (MSC) RALEIGH, NC 27699-1561
750 N. GREENFIELD PARKWAY, GARNER, NC 27529 (DELIVERY)
PHONE: (919) 773-2800 FAX: (919) 771-2745

J. S. BOURNE, P.E. STATE TRAFFIC MANAGEMENT ENGINEER
J. STEVE KITE, P.E. TRAFFIC CONTROL PROJECT ENGINEER
MATT SPRINGER, P.E. TRAFFIC CONTROL PROJECT DESIGN ENGINEER
TRAFFIC CONTROL DESIGN ENGINEER



APPROVED: *Lois D. Stoucho*
DATE: 2/13/2017

SEAL



TIP PROJECT: B-4598