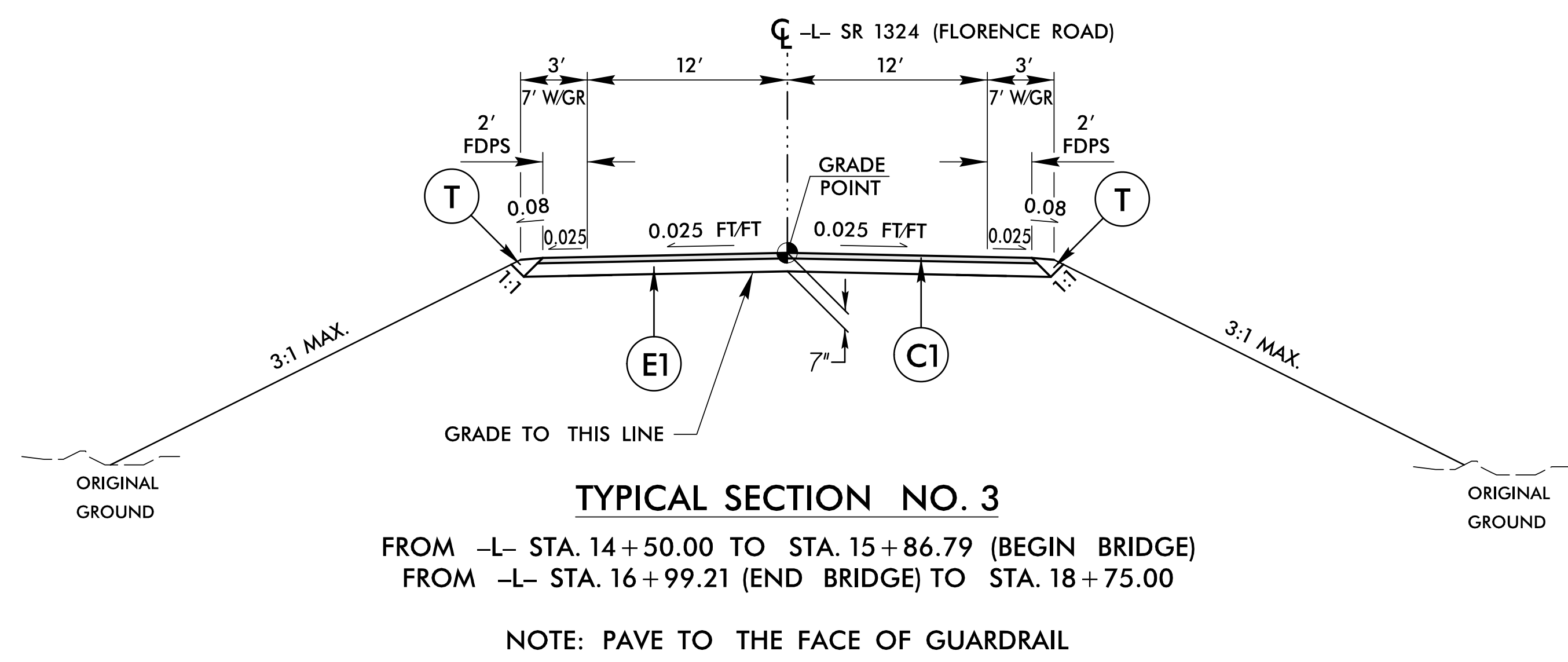
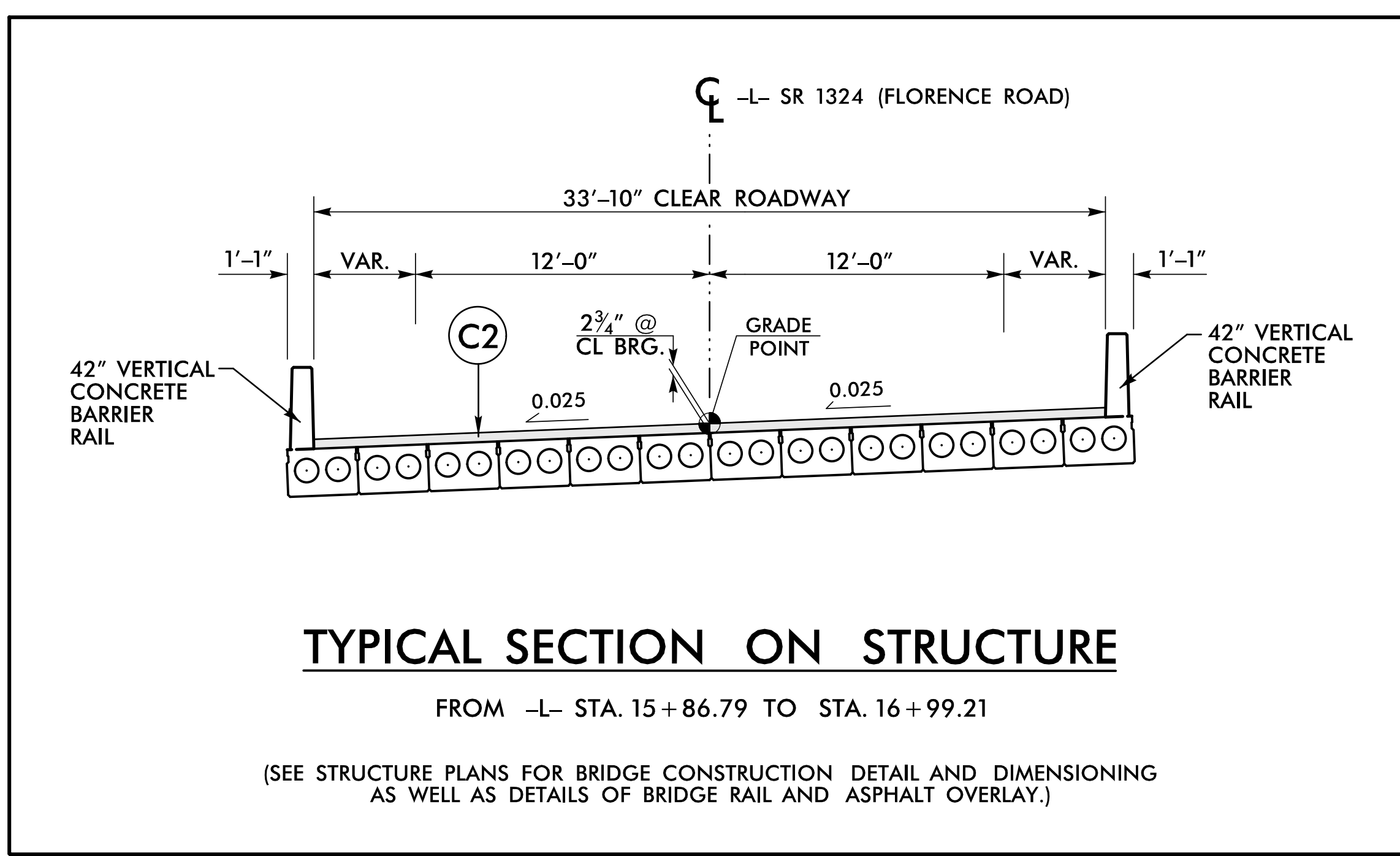
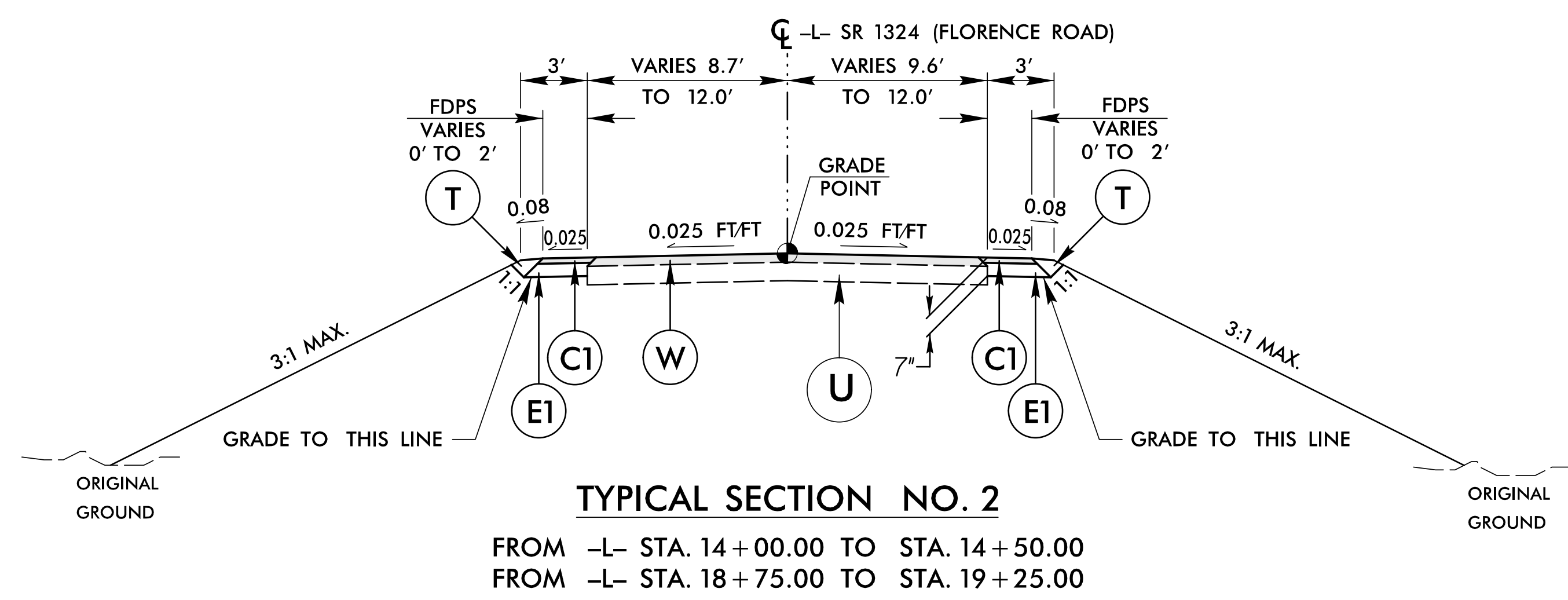
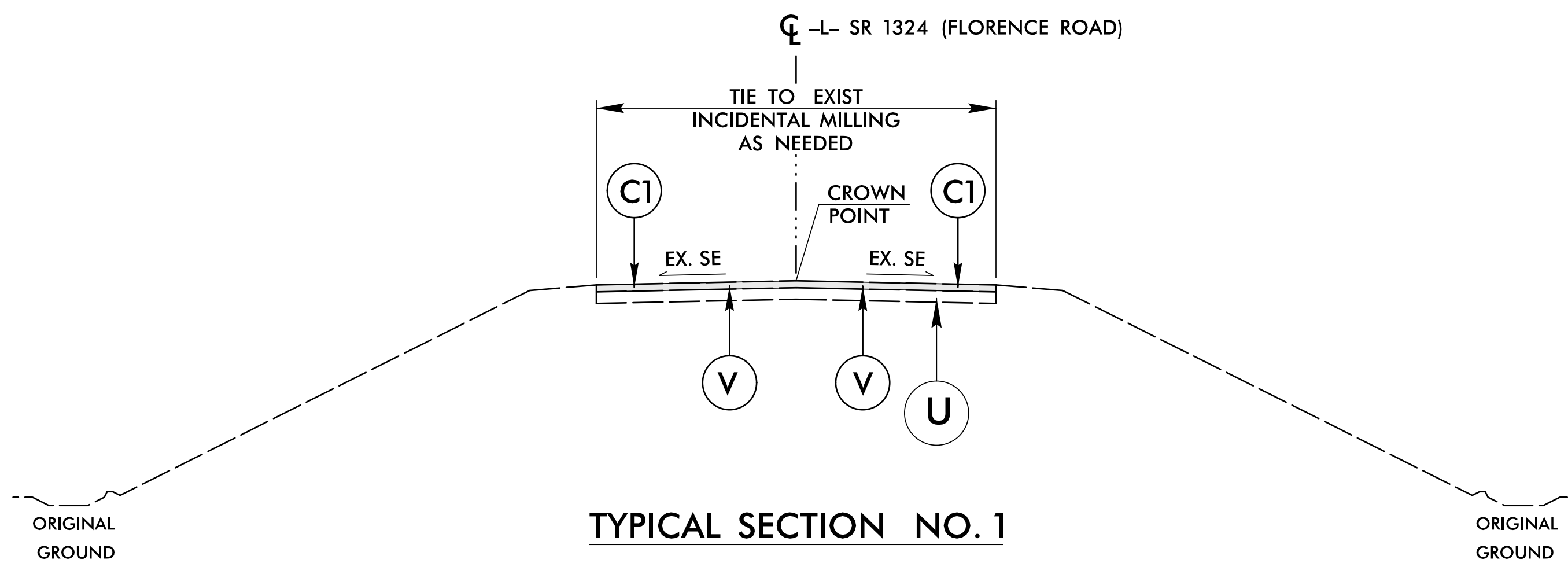
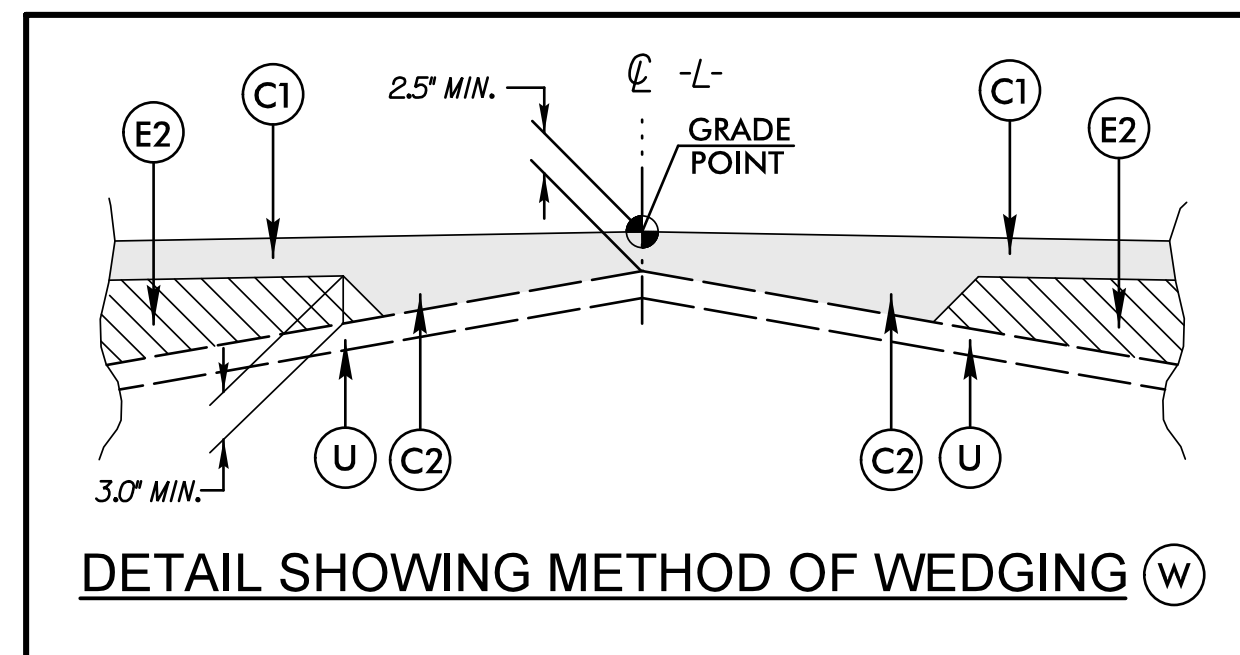
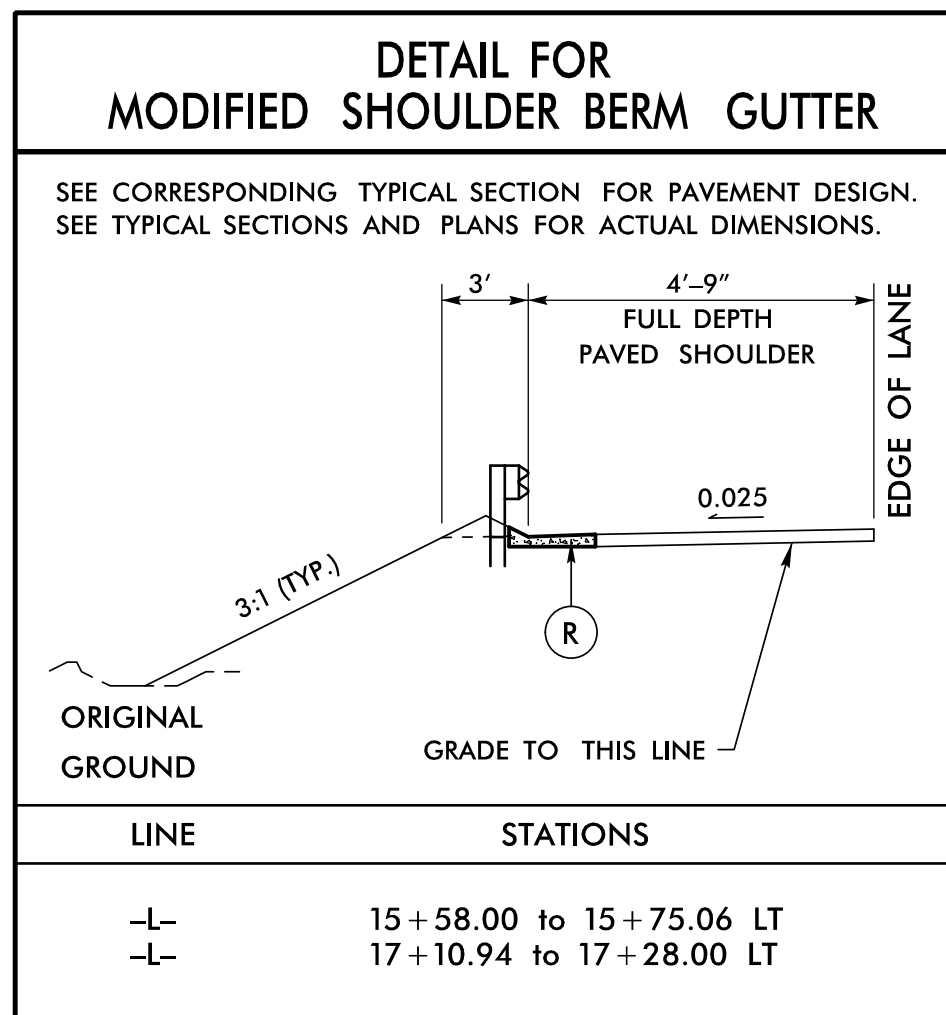


8/22/99

PROJECT REFERENCE NO. B-4598	SHEET NO. 2A-1
RW SHEET NO.	
ROADWAY DESIGN ENGINEER 	PAVEMENT DESIGN ENGINEER
TGS ENGINEERS 804-C N. LAFAYETTE ST SHELBY, NC 28150 PH (704) 476-0003 CORP. LICENSE NO.: C-0275	
DOCUMENT NOT CONSIDERED FINAL UNLESS ALL SIGNATURES COMPLETED	

PAVEMENT SCHEDULE	
FINAL PAVEMENT DESIGN: SEPTEMBER 6, 2012	
C1	PROP. APPROX. 2.5" ASPHALT CONCRETE SURFACE COURSE, TYPE SF9.5A, AT AN AVERAGE RATE OF 137.5 LBS PER SQUARE YARD IN EACH OF TWO LAYERS.
C2	PROP. VARIABLE DEPTH ASPHALT CONCRETE SURFACE COURSE, TYPE SF9.5A, AT AN AVERAGE RATE OF 110 LBS PER SQUARE YARD PER 1" DEPTH, TO BE PLACED IN LAYERS NOT GREATER THAN 1.5" IN DEPTH OR LESS THAN 1.0" IN DEPTH.
E1	PROP. APPROX. 4.5" ASPHALT CONCRETE BASE COURSE, TYPE B25.0B, AT AN AVERAGE RATE OF 513 LBS PER SQUARE YARD.
E2	PROP. VARIABLE DEPTH ASPHALT CONCRETE BASE COURSE, TYPE B25.0B, AT AN AVERAGE RATE OF 114 LBS PER SQUARE YARD PER 1" DEPTH, TO BE PLACED IN LAYERS NOT GREATER THAN 5.5" IN DEPTH OR LESS THAN 3.0" IN DEPTH.
R	MODIFIED SHOULDER BERM GUTTER
T	EARTH MATERIAL
U	EXISTING PAVEMENT
V	INCIDENTAL MILLING
W	VARIABLE DEPTH ASPHALT PAVEMENT (SEE STANDARD WEDGING DETAIL THIS SHEET)

PAVEMENT EDGE SLOPES AND TRENCH SLOPES ARE 1:1 UNLESS SHOWN OTHERWISE.



4/4/2017 10:45:58 AM \\Roadway\Proj\B-4598_Rdwy_tjpl.dgn