

5/28/09

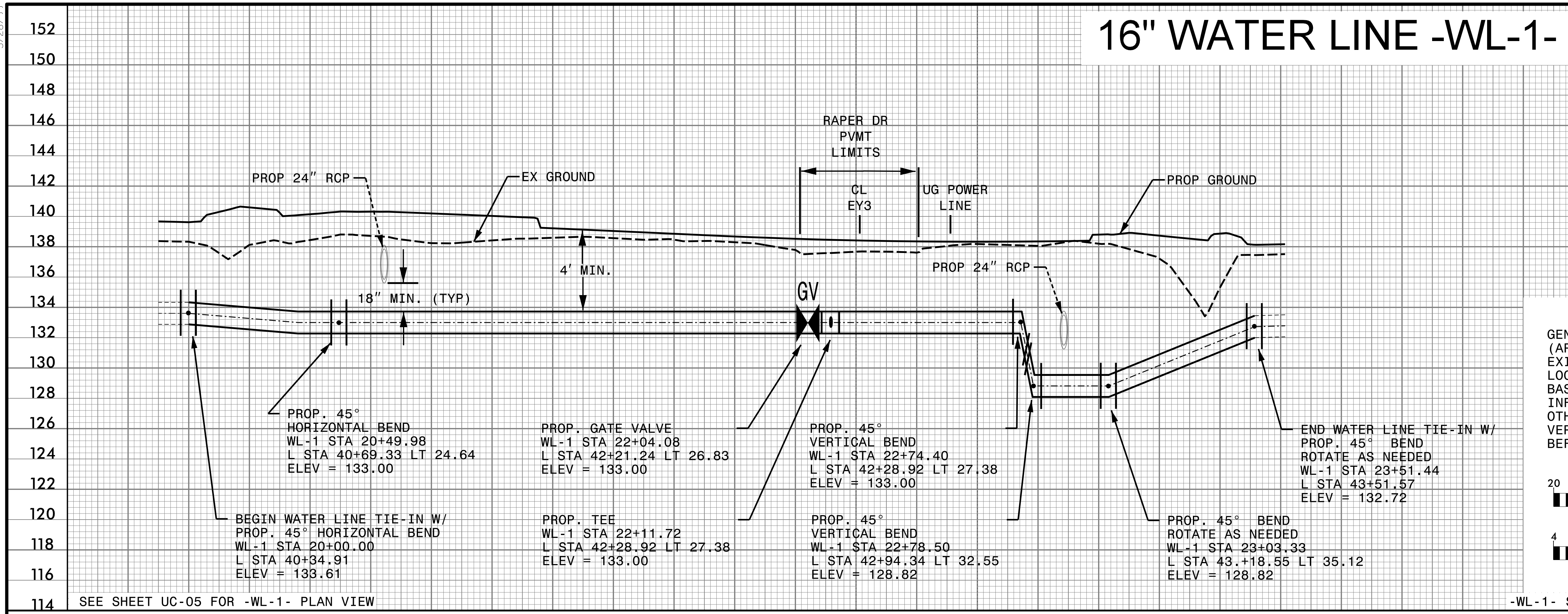
16" WATER LINE -WL-1-

| | |
|--|--------------------|
| PROJECT REFERENCE NO. U-3621A | SHEET NO. UC-09 |
| DESIGNED BY: GJB | |
| DRAWN BY: GJB | |
| CHECKED BY: KCZ | |
| APPROVED BY: KCZ | |
| REVISED: | |
| NORTH CAROLINA DEPARTMENT OF TRANSPORTATION UTILITIES ENGINEERING SECTION PHONE: (919) 707-6690 FAX: (919) 250-4151 | |
| UTILITY CONSTRUCTION PLANS ONLY DATE: 5/17/2009 ENGINEER: KEVIN C. ZOBER | |

UTILITY CONSTRUCTION

M A Engineering Consultants, Inc.
 598 East Chatham Street Suite 137 Cary, NC 27511
 Phone: 919.297.0220 Fax: 919.297.0221
 NC License: F-0160

DOCUMENT NOT CONSIDERED FINAL UNLESS ALL SIGNATURES COMPLETED

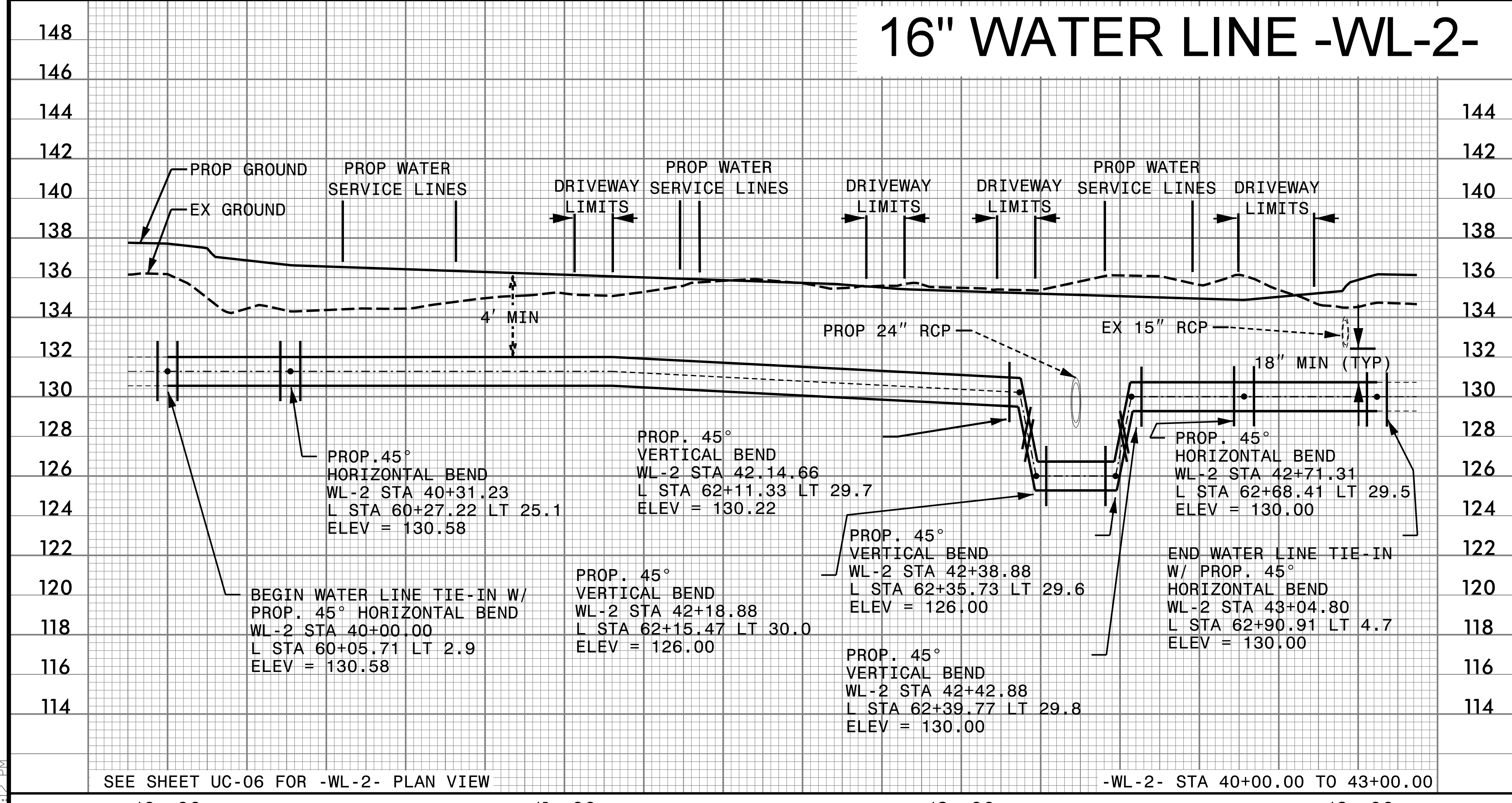


SEE SHEET UC-05 FOR -WL-1- PLAN VIEW

-WL-1- STA 20+00.00 TO 24+00.00

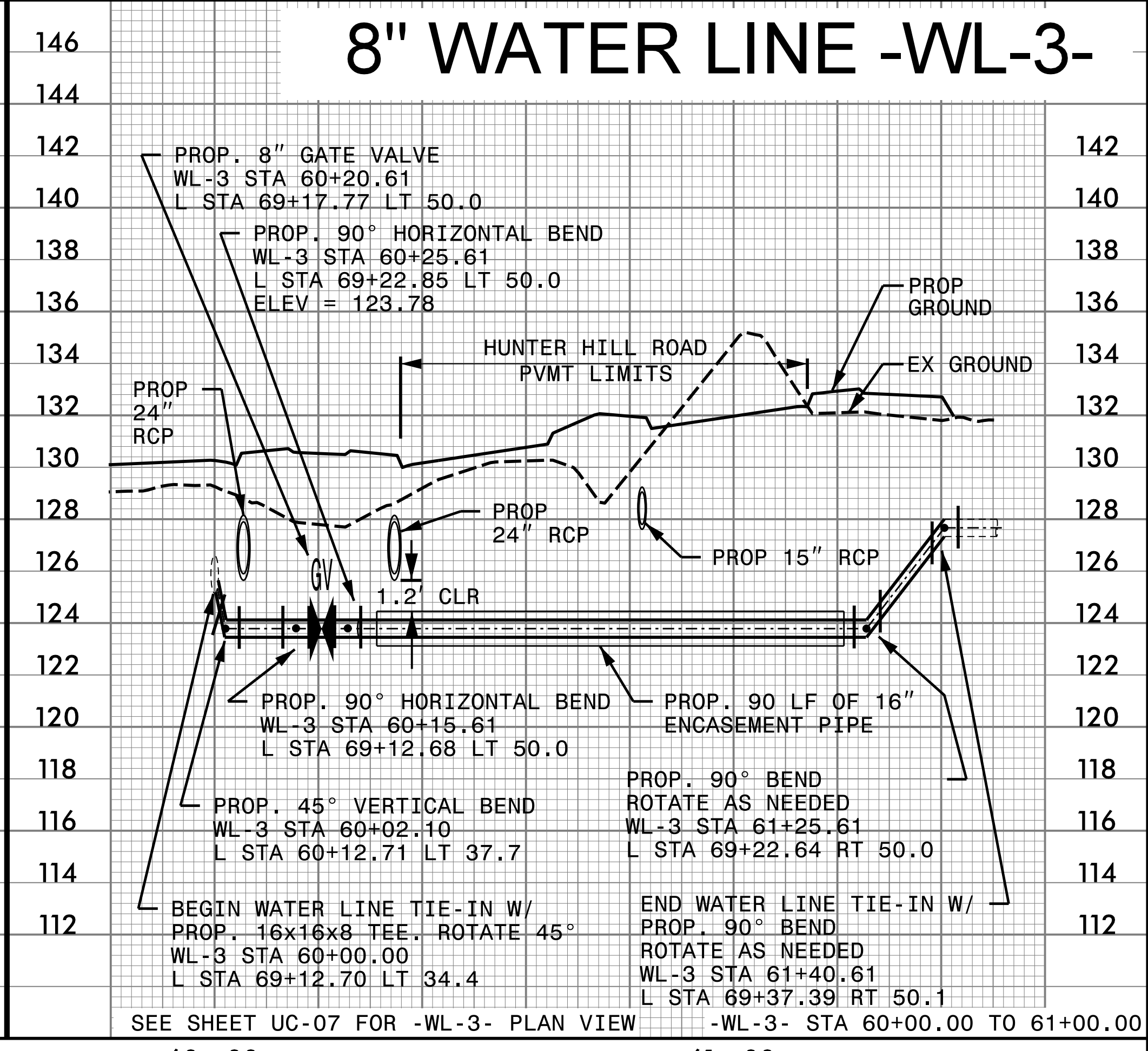
16" WATER LINE -WL-2-

8" WATER LINE -WL-3-



SEE SHEET UC-06 FOR -WL-2- PLAN VIEW

-WL-2- STA 40+00.00 TO 43+00.00



SEE SHEET UC-07 FOR -WL-3- PLAN VIEW

-WL-3- STA 60+00.00 TO 61+00.00

5/17/2009 06:59:09 0105000_U-3621A\Utilities\Engineer\mg\UC-Proj\U3621A_ut_UC-09_p1.dgn